



# Junkkari

  
**MAESTRO**

<sup>3000</sup>  
**MAESTRO**

<sup>4000</sup>  
**MAESTRO**

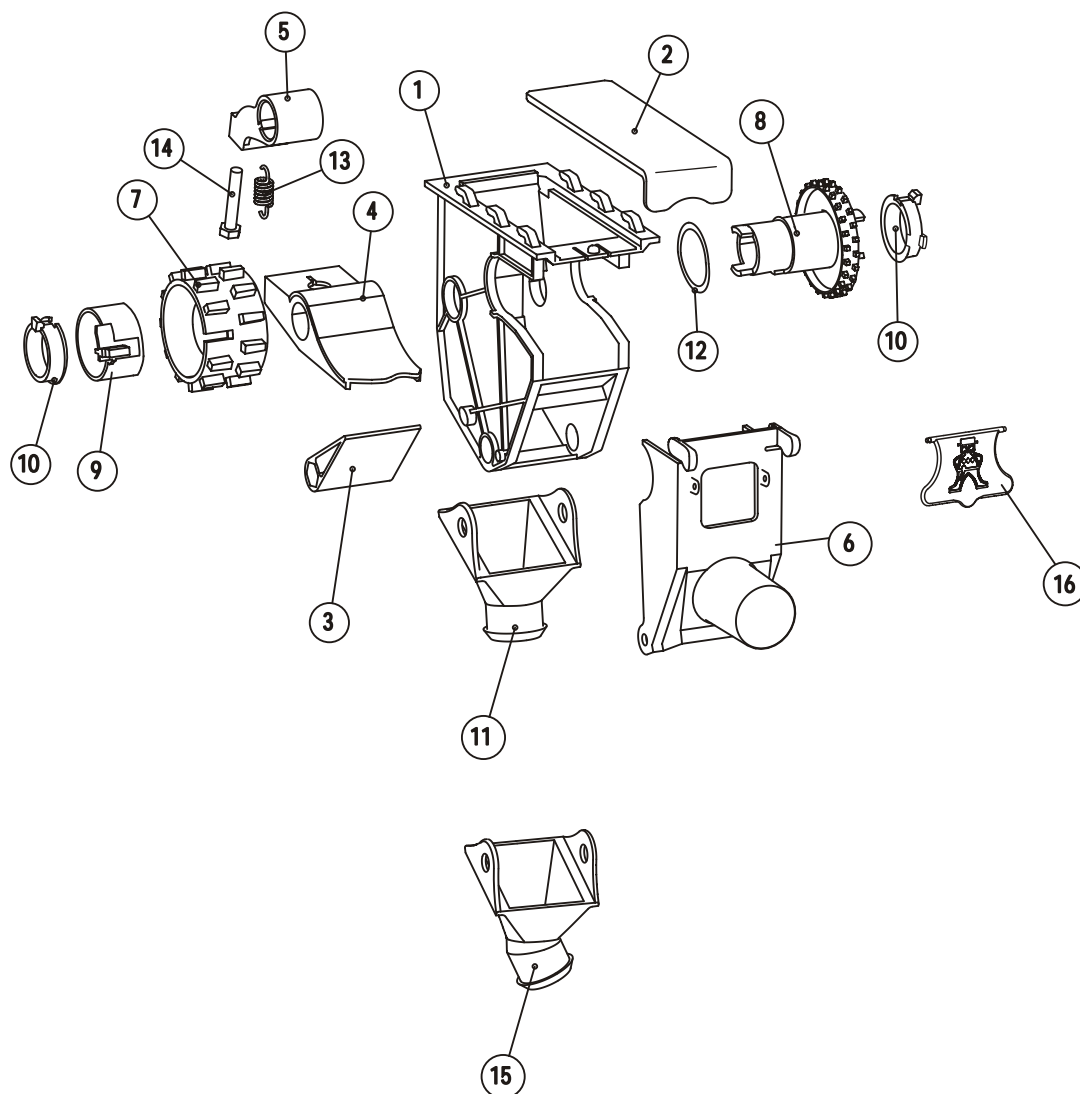
## SPARE PART CATALOGUE

MA09\_EN\_B

Junkkari Oy  
62375 YLIHÄRMÄ FINLAND  
TEL. +358-(0)6-4835111  
FAX +358-(0)6-4835295  
e-mail: [junkkari@msk.fi](mailto:junkkari@msk.fi)  
Internet: [www.junkkari.fi](http://www.junkkari.fi)

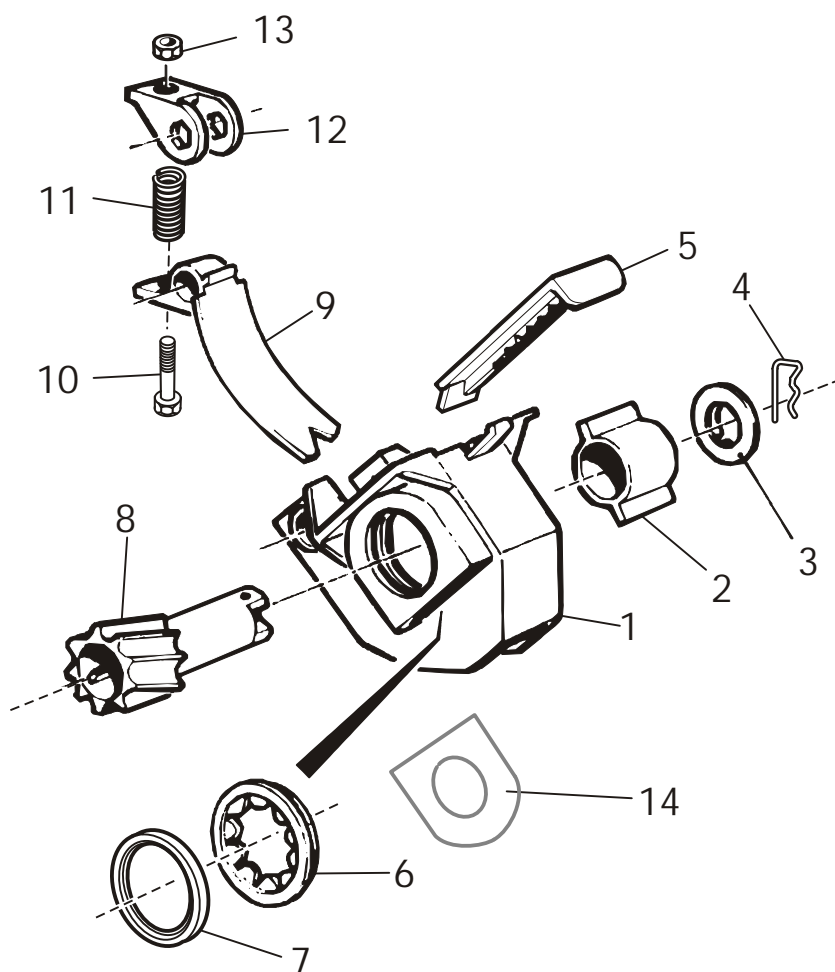
ENGLISH 

# SEED FEED HOUSING



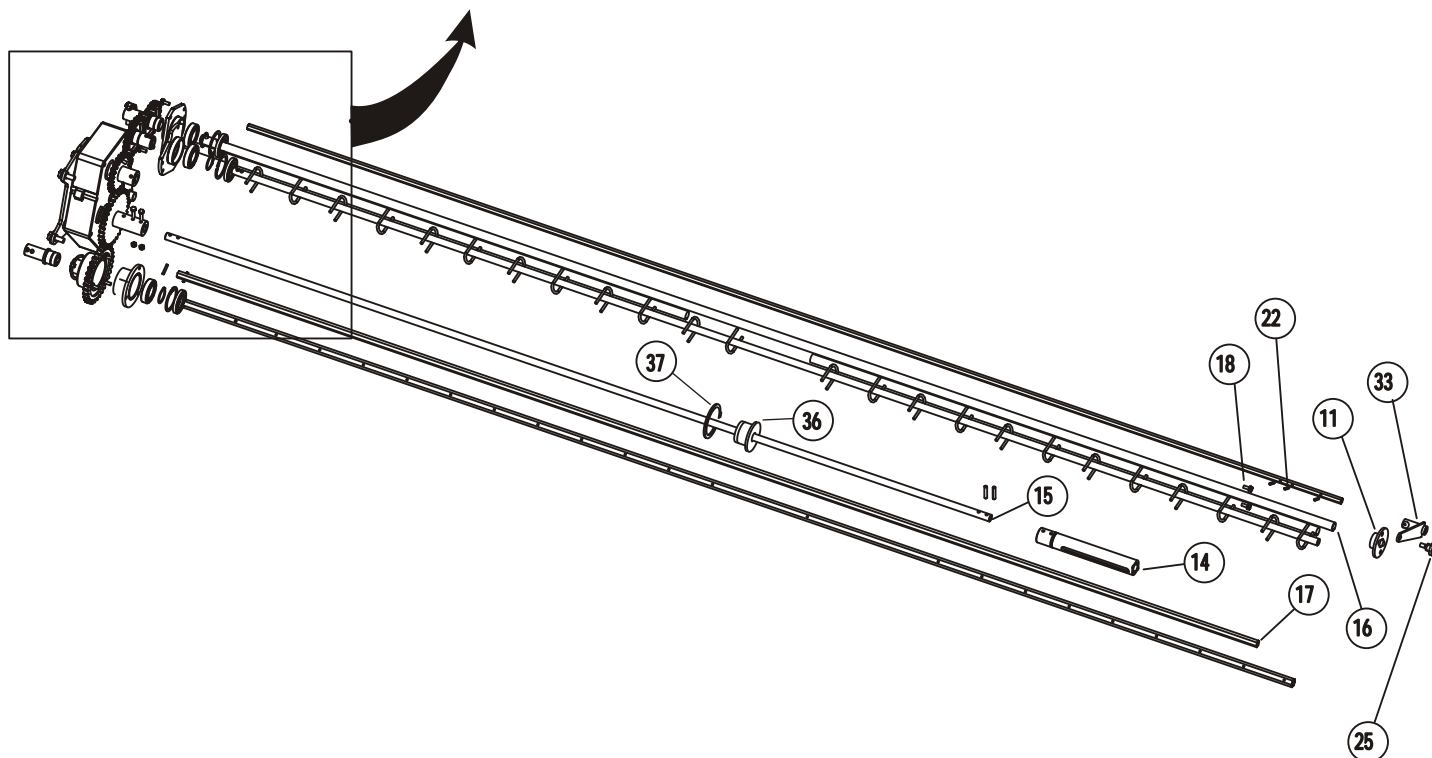
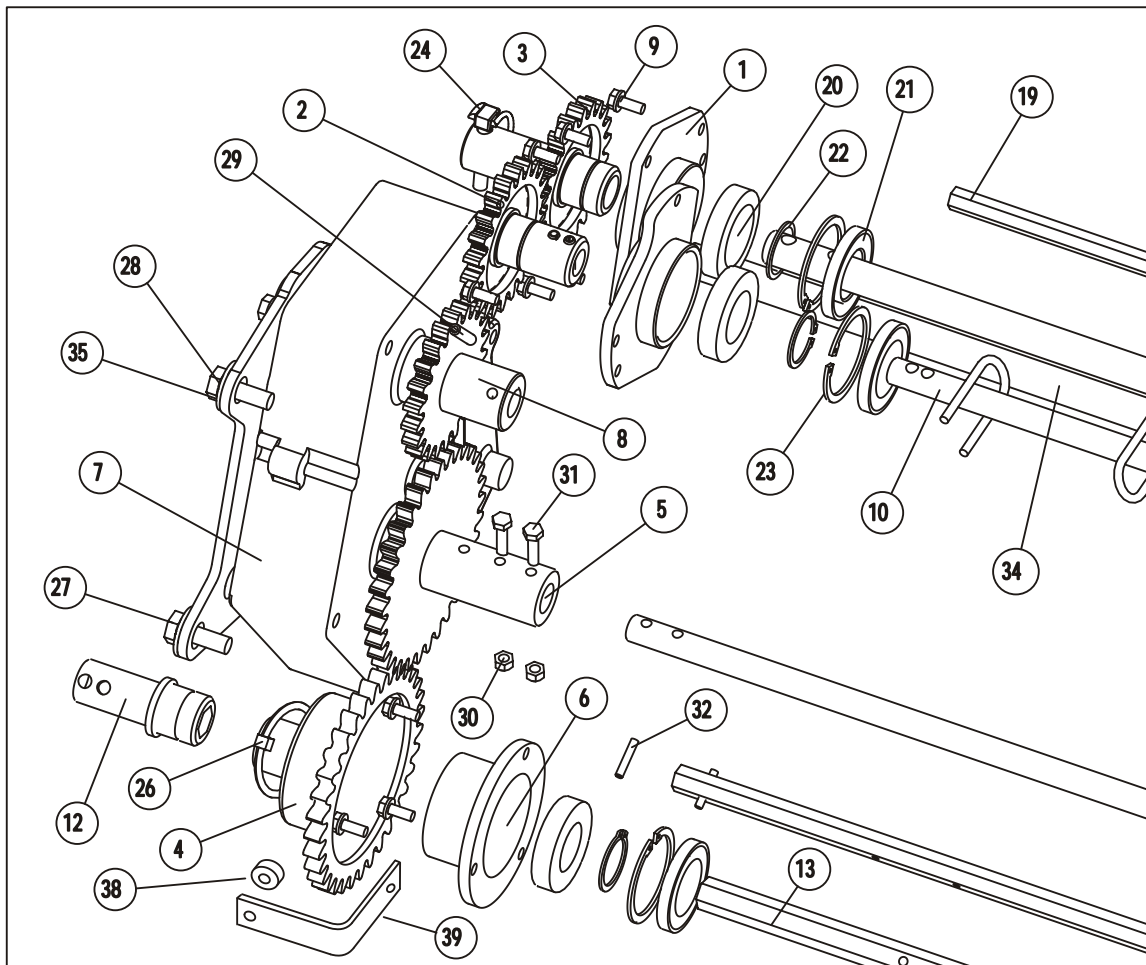
PART	CODE	NAME	PCS	
			MAESTRO3000	MAESTRO4000
1	17101	FEED HOUSING	24	32
2	17102	LID	24	32
3	17103	SMALL FLAP	24	32
4	17104	BOTTOM FLAP	24	32
5	17105	BOTTOM FLAPS BUSHING	24	32
6	17106	COVER	24	32
7	17107	PRIMARY FEED ROLLER	24	32
8	17108	SECONDARY FEED ROLLER	24	32
9	17109	JOINT PART	24	32
10	17110	BEARING	48	64
11	17111	HOPPER	17	22
12	17490	SPRING WASHER	24	32
13	17144	BOTTOM FLAP SPRING	24	32
14	A06151514	6-SCREW M6X35 8.8 DIN 933 ZN	24	32
15	18095	HOPPER ANGLED	7	10
16	18821	SMALL COVER	24	32
	17580	FEED HOUSING ASSEMBLED(1-16)	24	32

# FERTILIZER FEED HOUSING



PART	CODE	NAME	PCS MAESTRO3000	PCS MAESTRO4000
1	125058	FEED HOUSING	24	32
2	125059	CATCH	24	32
3	125060	END PLATE	24	32
4	125055	HAIR PIN	24	32
5	125057	STOPPER PLATE	24	32
6	125062	SEALING RING	24	32
7	D30147	SEALING RING FOR ALUMINIUM ROLLER		
8	125054	ROLLER PLASTIC	24	32
	12989	ROLLER ALUMINIUM		
9	125070	BOTTOM FLAP	24	32
10		HEX SCREW M5*35	24	32
11	125073	SPRING FOR BOTTOM FLAP	24	32
12	125072	CONTROL PART	24	32
13	125071	HEX NUT M5 IL	24	32
14	12808	SEALING PLATE (ONLY FOR ALUM. ROLLER)	24	32
	160825	FEEDER CASING ASSEMBLED (1-13)	24	32

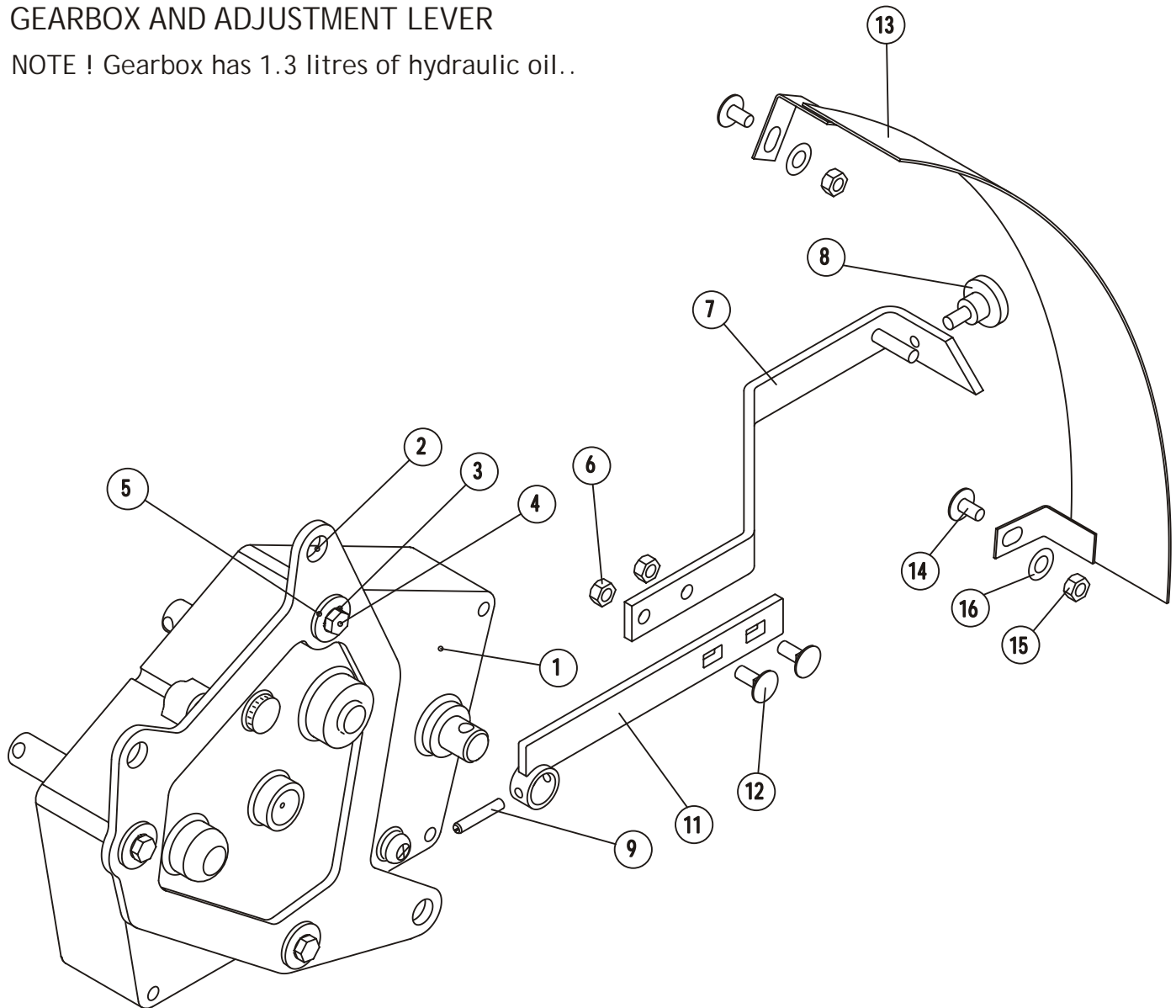
# FEED AXLES AND MECHANISM



PART	CODE	NAME	PCS	
			MAESTRO3000	MAESTRO4000
1	17185	BEARING HOUSING SLOPED	2	2
2	17551	GEAR	1	1
3	17552	GEAR	1	1
4	17553	GEAR	1	1
5	17554	GEAR	1	1
6	17095	BEARING HOUSING	1	1
7	17475	GEARBOX ASSEMBLED	1	1
8	17556	GEAR	1	1
9	B560E1524	WASHER M 6 DIN125A ZN	11	11
10	17559	MIXER SHAFT WELDED	1	
	18138	MIXER SHAFT WELDED		1
11	18123	NYLON BEARING Ø20 SHAFT	1	1
12	17094	HUB	1	1
13	17419	FEEDER AXLE FERTILIZER SIDE	1	
	18143	FEEDER AXLE FERTILIZER SIDE		1
14	17252	GLIDE TUBE	1	1
15	17247	DRIVE SHAFT	1	
	18141	DRIVE SHAFT		1
16	17455	SEED-SIDE FEEDER AXLE	1	
	18137	SEED-SIDE FEEDER AXLE		1
17	17561	FERTILIZER-SIDE AXLE	1	
	18142	FERTILIZER-SIDE AXLE		1
18	A060G1024	6-SCREW M6X16 8.8 DIN 933 ZN	11	11
19	17564	SMALL FLAP SHAFT	1	
	18136	SMALL FLAP SHAFT		1
20	CE60062RS	BALL BEARING 6006 2 RS	3	3
21	D49009	SEALING 30*55*7 CRW1R	3	3
22	BH1011L11	LOCK RING 30X1.5 DIN471	3	3
23	BH1S1S0J1	LOCK RING 55X2DIN472	3	3
24	BEC000003	RING PIN 5080451	1	1
25	A04095	FINGER SCREW M8X15 R4018	1	1
26	BE6000002	RING-PIN 6X40 L=40 ZN	1	1
27	AOA101524	6-SCREW M10X30 8.8 DIN933 ZN	3	3
28	B5A0H2214	SPRING WASHER M10 DIN127B ZN	3	3
29	B86160001	ROLL PIN 6X36 DIN1481 ZNC	6	6
30	AG6113014	6-NUT IL M 6 DIN985-8 ZN	2	2
31	A061F1014	6-SCREW M6X45 8.8 DIN 931 ZN	2	2
32	B840N0001	RING PIN 4X22DIN1481 ZNC	5	5
33	17679	ADJUSTMENT LEVER TO SMALL FLAP	1	1
34	17563	BOTTOM FLAP SHAFT	2	
34	18140	BOTTOM FLAP SHAFT		2
35	B5A0V1524	WASHER M10 DIN9021B ZN	3	3
36	18459	KARDAN BEARING	1	1
37	BH1511L12	SEGER Ø34*1.5	1	1
38	S/MG/193-1-020	MAGNET	2	2
39	18548	SENSOR RACK	1	1

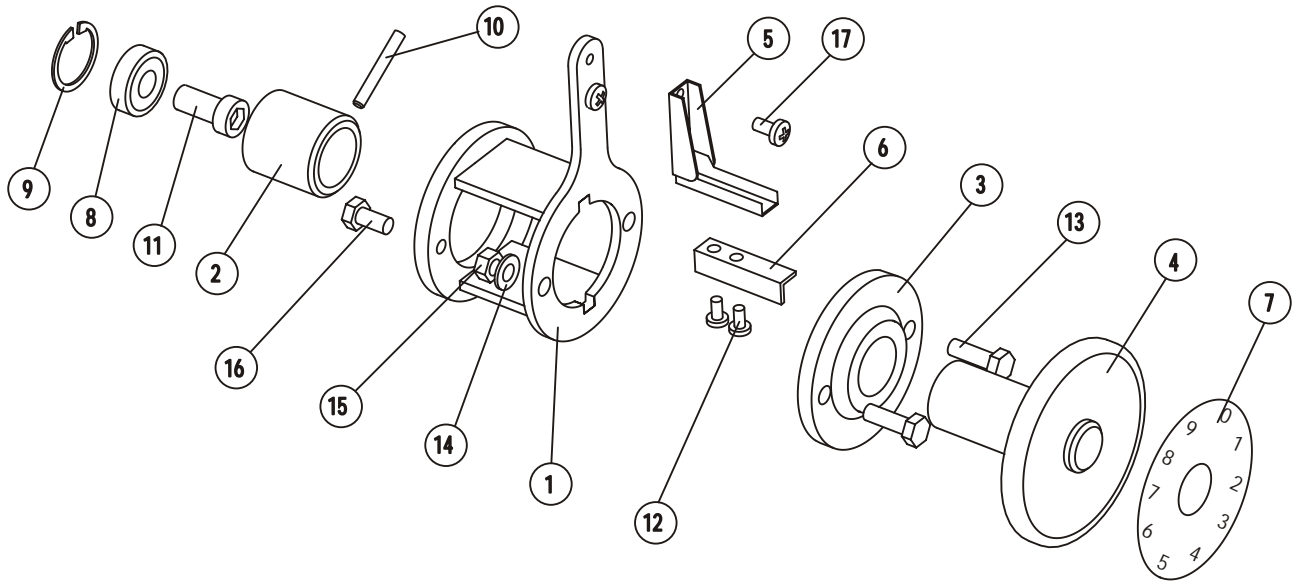
## GEARBOX AND ADJUSTMENT LEVER

NOTE ! Gearbox has 1.3 litres of hydraulic oil..



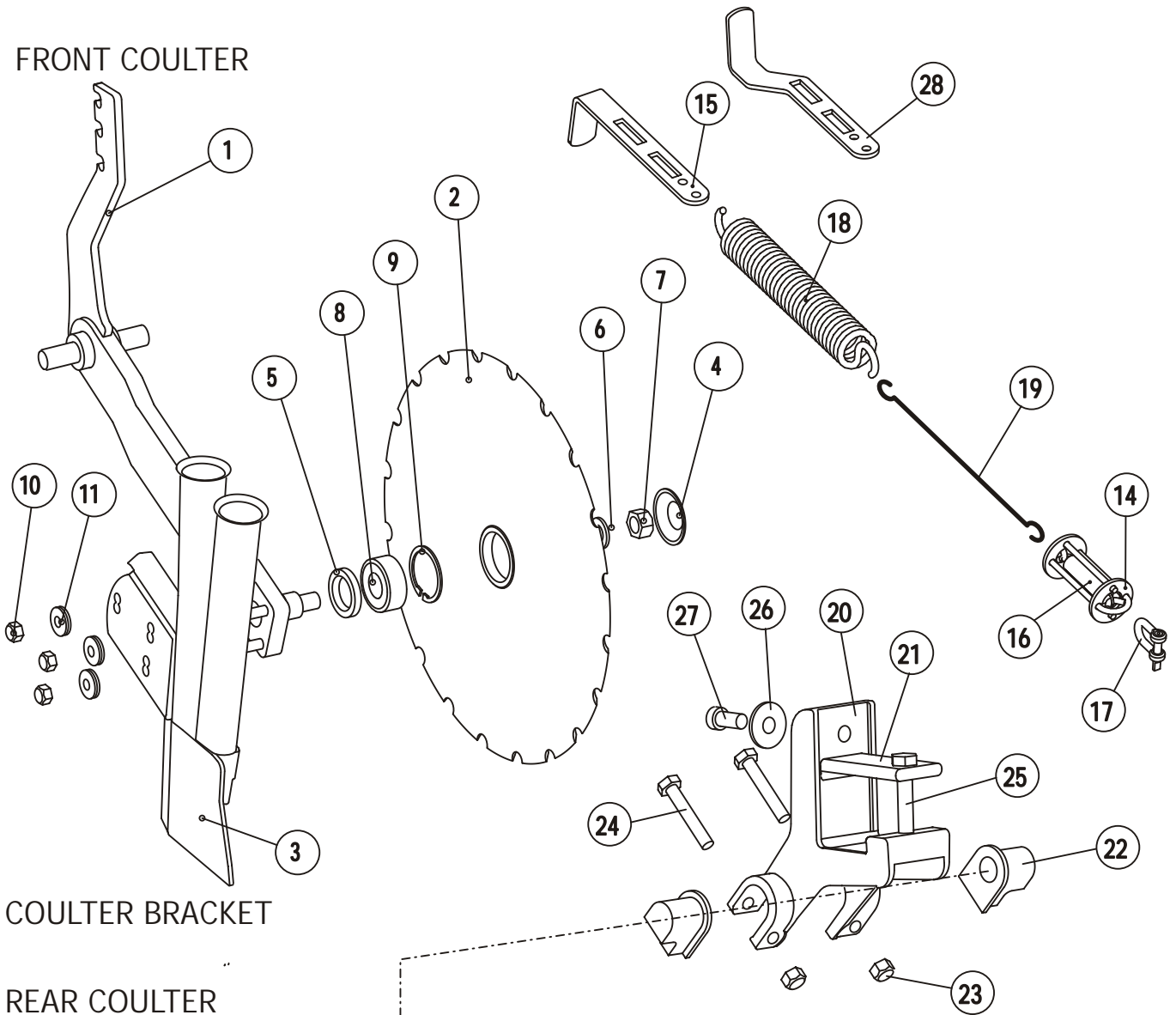
PART	CODE	NAME	PCS	
			MAESTRO3000	MAESTRO4000
1	18499	GEARBOX	1	1
2	17337	BRACKET TO GEARBOX	1	1
3	B580E2014	SPRING WASHER M 8 DIN127B ZN	3	3
4	A081F1514	6-SCREW M8X45 8.8 DIN 933 ZN	3	3
5	B580V1544	WASHER M 8 DIN440R ZN	3	3
	17997	LEVER ASSEMBLED, PARTT 6-12	1	1
6	A50710	HEX NUT M8 IL	2	2
7	17996	LEVER TOP PART WELDED	1	1
8	A04095	FINGER SCREW M8*15	1	1
9	B86160001	SPRING COTTER 6*36	1	1
10	17997	LEVER ASSEMBLED, PARTT 6-12	1	1
11	17706	LEVER WELDED	1	1
12	A080L3014	LOCK SCREW M8*20	1	1
13	17993	SCALE TO GEARBOX	1	1
14	A05150	LOCK SCREW M8*20 AISI	2	2
15	AG8113014	HEX NUT M8 IL	2	2
16	B580H1624	WASHER M8	2	2

# FERTILIZER RATE ADJUSTMENT



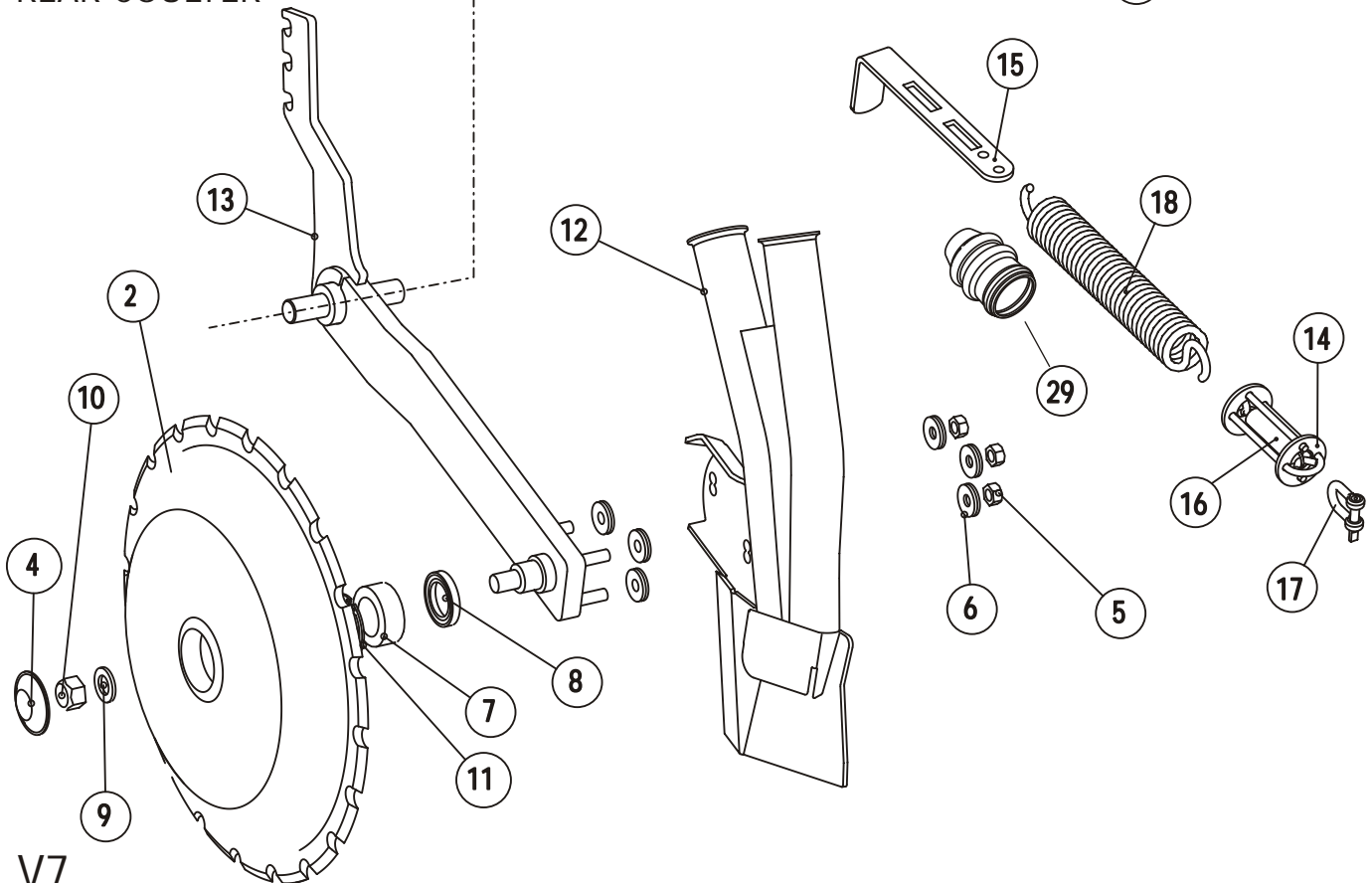
PART	CODE	NAME	PCS	
			MAESTRO3000	MAESTRO4000
1	17422	BRACKET	1	1
2	17418	BEARING HOUSING TO SETSCREW	1	1
3	D160304	NUT	1	1
4	160302	FEEDING SETSCREW GRIP ASSEMBLED	1	1
5	160301	SCALE HOLDER ASSEMBLED	1	1
6	13945	SETSCALE	1	1
7	135210000	FEEDING SET SCALE FERTILIZER	1	1
8	CE62012RS	BALL BEARING 6201 2 RS	1	1
9	BH1210L11	LOCK RING 32X1.2 DIN472	1	1
10	B851A0001	ROLL PIN 5X40 DIN1481 ZNC	1	1
11	A0C0S4524	SCREW M12X25 8.8 DIN912 ZN	1	1
12	A00750	SCREW M5X10 A2DIN 7985 POZ	2	2
13	53060140	6-SCREW M8 X25 8.8 DIN 933 ZN	2	2
14	B580H1624	WASHER M 8 DIN125A ZN	2	2
15	AG8111014	6-NUT M 8 DIN934-8 ZN	2	2
16	A04220	6-SCREW M8X16 A2-80 DIN 933 A	2	2
17	A060A9024	M6X10 4.8 DIN7985 ZN POZ	2	2
	17567	SETSCREW ASSEMBLED (PARTT 1-17)	1	1

FRONT COULTER



COULTER BRACKET

REAR COULTER





PART	CODE	NAME	PCS	
			MAESTRO3000	MAESTRO4000
1	17332	FRONT COULTER ARM WELDED	12	16
2	17245	DISC FRONT COULTER	12	16
3	17523	STRAIGHT COULTER PIPES WELDED	12	16
4	17385	PROTECTIVE CAP	24	32
5	D49001	SEALING 30*47*7 RST DIN 3760	24	32
6	B61455	WASHER M16 DIN125A 200HV Z	24	32
7	AGG113014	6-NUT IL M16 DIN985-8 ZN	24	32
8	CE3205	BEARING 3205A 2 RS	24	32
9	BH1N20021	LOCK RING 52X2 DIN472	24	32
10	AGA113014	6-NUT IL M10 DIN985-8 ZN	36	48
11	E63881	PLATE SPRING 28/10.2X1.25	216	288
12	17527	REAR COULTER ARM WELDED	12	16
13	17541	DISC REAR COULTER	12	16
14	17392	TENSIONER	24	32
15	17195B	LEVER	24	32
16	D14105	SPRING	24	32
17	BD300002	SCREW SHACKLE	24	32
18	E34816	SPRING	24	32
19	17703	ROD	12	16
20	17118	COULTER BRACKET	24	32
21	17576	PLATE STEEL	24	32
22	17162	PLASTIC BEARING	48	64
23		HEX NUT M6 IL	48	64
24		HEX SCREW M10*60	48	64
25		HEX SCREW M12*80	24	32
26		WASHER M12	48	64
27		HEX NOTCH SCREW M10*25	24	32
28	* 17195D	LEVER	12	16
29	D18253	SEALING	2	2
	17330	FRONT COULTER ASSEMBLED (PARTS 1-11)	12	16
	17525	REAR COULTER ASSEMBLED (PARTS 2,4-13)12	16	
	17573	COULTER BRACKET (PARTS 20-27)	24	32

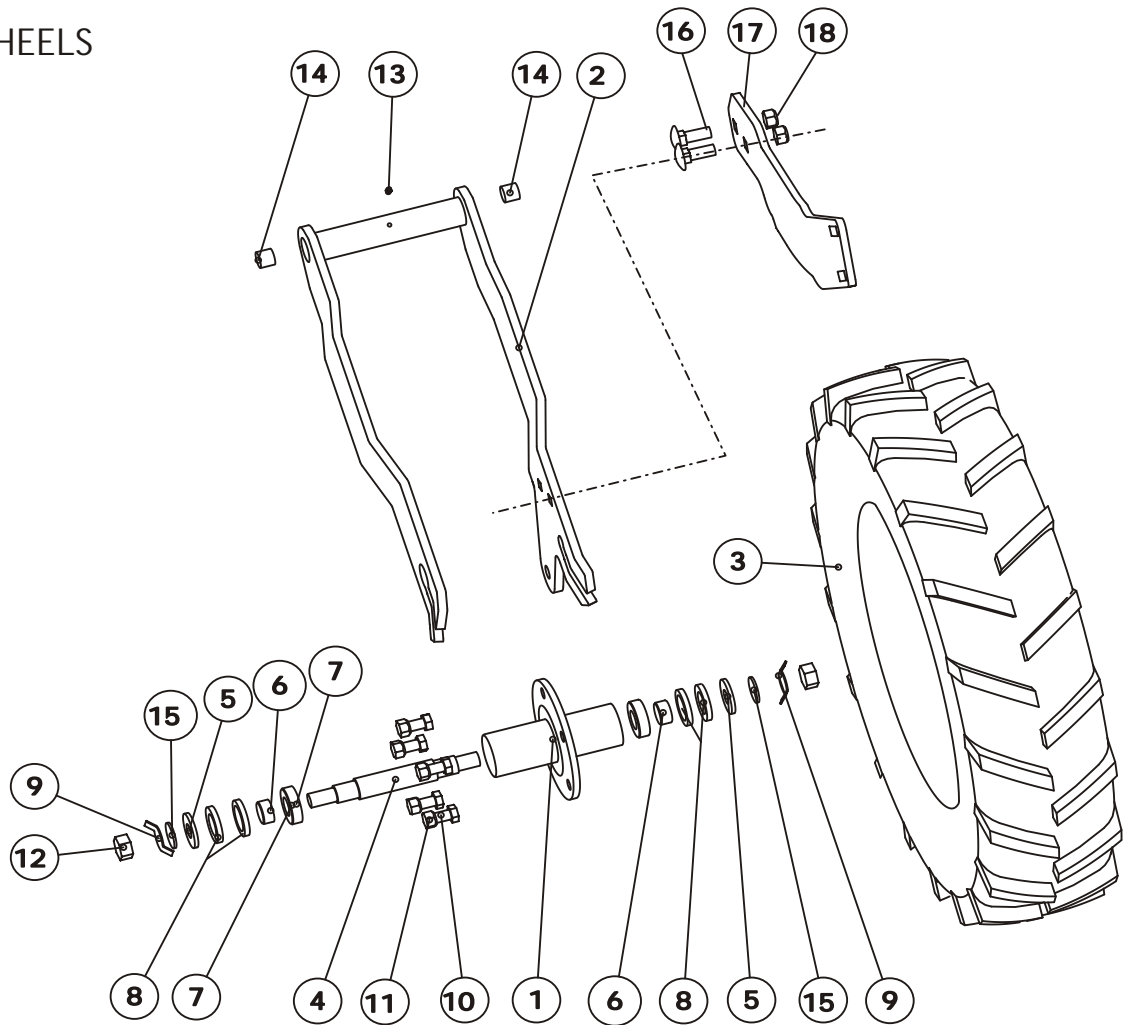
\* USED WITH SEPARATE FERTILIZER COULTERS

NOTE THAT THE TIGHTENING NUT M16 OF THE COULTER DISK 7 MUST BE TIGHTENED 150 Nm.



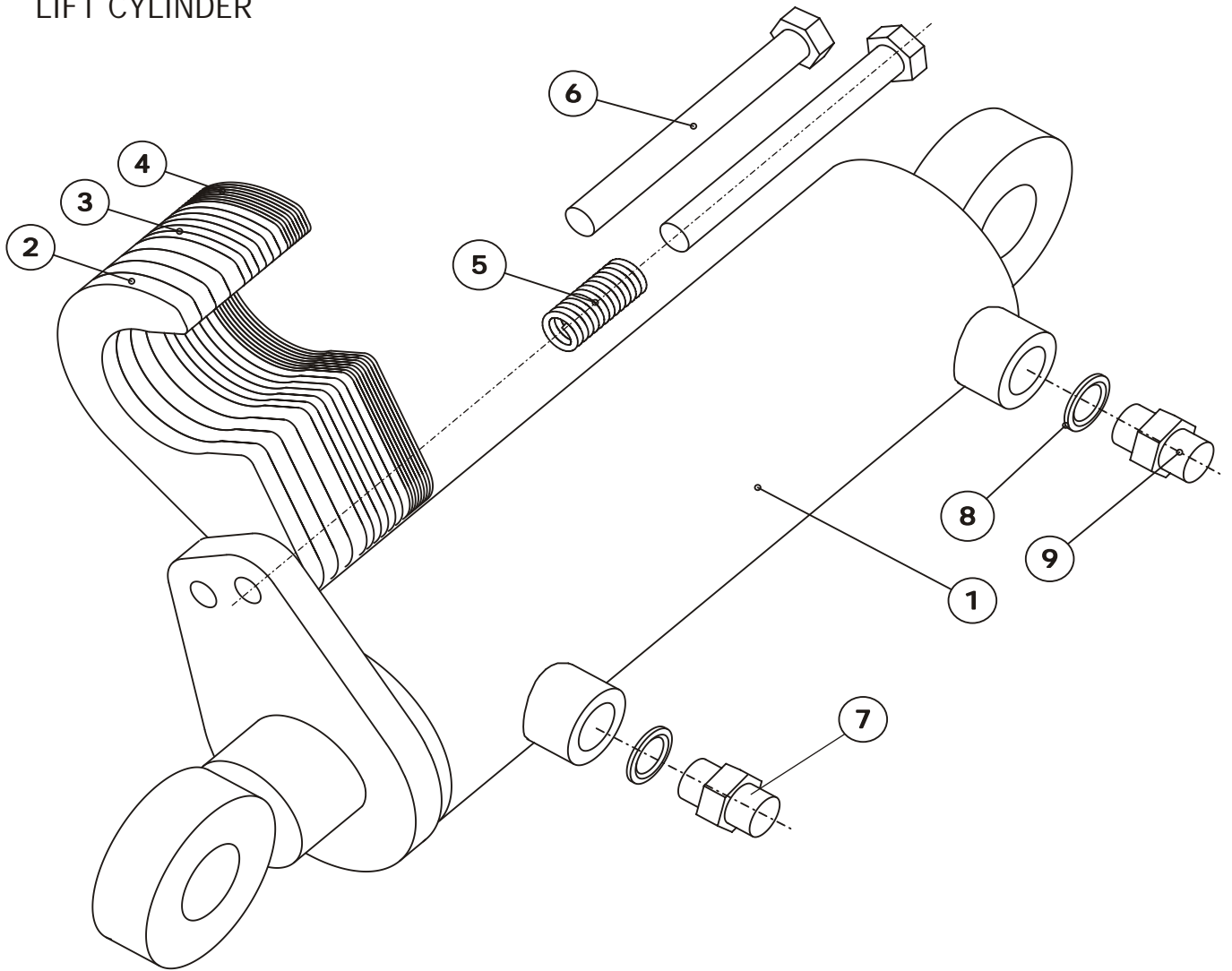
PART	CODE	NAME	PCS	
			MAESTRO3000	MAESTRO4000
1	18038	GROUND WHEEL ARM	1	1
2	18046	GROUND WHEEL BOTTOM PART	1	1
3	17294	GROUND WHEEL WELDED	1	1
4	17295	AXLE	1	1
5	17128	SPROCKET Z22 AND Z36	1	1
6	17278	BUSHING	1	1
7	17398	GROUND WHEEL BRACKET	1	1
8	18047	COVER UPPER	1	1
9	18044	COVER LOWER	1	1
10	CE1020160	FREEWHEEL STIEBER CSK25	1	1
11	BH1N20021	LOCK RING 52X2 DIN472	2	2
12	B5C0R2024	WASHER M12 DIN125A ZN	5	5
13	B5G102524	WASHER M16 DIN125A ZN	1	1
14	AGG111084	6-NUT M16 ANTI-CLOCKWISE	1	1
15	17131	SPROCKET Z13	1	1
16	BD3011404	ROLL PIN 4MM DIN11024 ZN	1	1
17	17400	DYMET	2	2
18	17090	SHAFT	1	1
19	CE3205	BEARING 3205A 2 RS	1	1
20	A11630	6-SCREW M12X200 8.8 DIN933ZNC	1	1
21	18121	CHAIN 1/2*136 ROLL	1	1
22	B560B1614	SPRING WASHER M 6 DIN127B ZN	1	1
23	A060A1514	6-SCREW M6X10 8.8 DIN 933 ZN	1	1
24	BH0L12014	LOCK RING20X1.2 DIN471	1	1
25	17577	KEY 6*6*60	1	1
26	AGC111014	6-NUT M12 DIN934-8 ZN	6	6
27	AGC113014	6-NUT IL M12 DIN985-8 ZN	3	3
28	A0C101512	6-SCREW M12X30 8.8 DIN933ZNC	3	3
29	A0C1L1514	6-SCREW M12X50 8.8 DIN931ZN	2	2
30	E47725	COMPRESSION SPRING 4394-7725 AISI	1	1
31	A0C0S1512	DIN_EN_24017-M12x25	3	3
32	D14711600	SPRING 5*40*250 4-7116S	1	1
33	17723	CHAIN	1	1
34	B88160001	ROLL PIN 8X36 DIN1481 ZNC	1	1
35	BH0S10S14	LOCK RING 25X1.2 DIN471	1	1
36	17712	LEVER ASSEMBLED	1	1
37	17740	LIFT CHAIN WELDED	1	1
38	BC3000002	SCREW SHACKLE M8 ZN	1	1
39	707510	TENSION SCREW	1	1
40	A080L1514	6-SCREW M8X20 8.8 DIN 933 ZN	1	1
41	B8C140001	ROLL PIN 12X40 DIN1481 ZNC	1	1
42	17844	LEVER	1	1
43	CE62052RS	BALL BEARING 6205 2 RS	2	2
44	17890	ROLL GRIP	1	1
45	D30093	HANDLE	1	1
46	137660	CALIBR.TEST CRANK 3-12634	1	1

# SUPPORT WHEELS



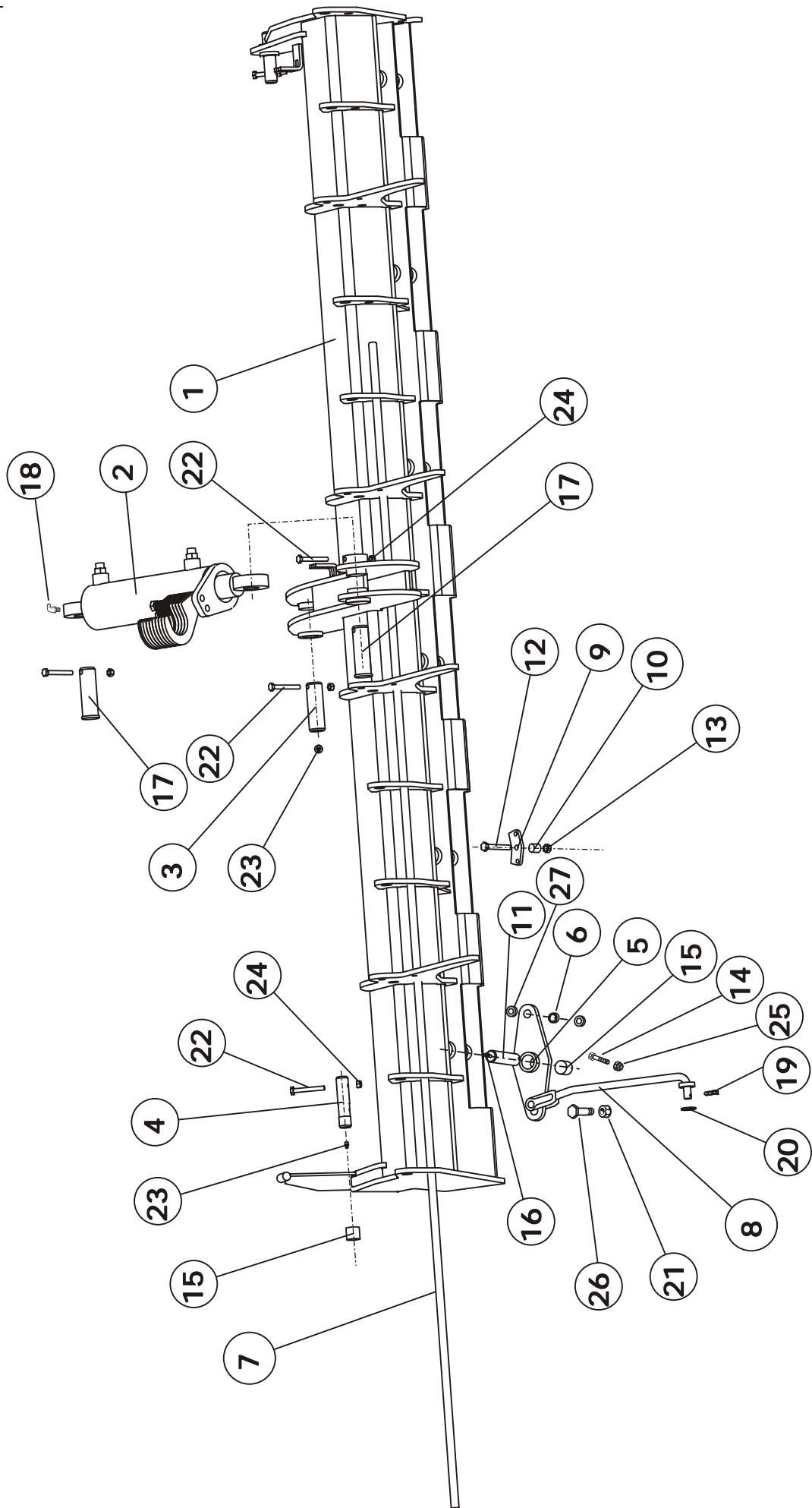
PART	CODE	NAME	PCS	
			MAESTRO3000	MAESTRO4000
1	17230	WHEEL HUB	1	1
2	17242	WHEEL FORK LEFT	1 / MACHINE	1 / MACHINE
	17240	WHEEL FORK CENTER	10 / MACHINE	14 / MACHINE
	17241	WHEEL FORK RIGHT	1 / MACHINE	1 / MACHINE
3	D18355	WHEEL ASSEMBLED MAESTRO	12 / MACHINE	16 / MACHINE
4	17225	SHAFT	1	1
5	17232	BUSHING	2	2
6	17233	BUSHING	2	2
7	CE6205000	BALL BEARING 6205	2	2
8	CNA304771	DIN_3760-A32x52x7	4	4
9	17522	LOCKING PLATE	2	2
10	A0E151514	6-SCREW M14X35 8.8 DIN933 ZN	5	5
11	AGE113014	6-NUT IL M14 DIN 985 ZN	5	5
12	A51900	6-NUT M20X1.5 DIN934-8 ZN	2	2
13	BJ6150400	GREASE NIPPLE M6*1/STRAIGHT N 504	1	1
14	CV0202320	DYMET 20/23/20	2	2
15	B5L173024	WASHER M20 DIN125A ZN	2	2
16	A0C151014	LOCK SCREW M12*35	2	2
17	17429	SCRAPER BRACKET	12 / MACHINE	16 / MACHINE
18	AGC113014	HEX NUT M12 IL	2	2
	17361	WHEEL LEFT ASSEMBLED	1	1
	17371	WHEEL CENTER ASSEMBLED	10	14
	17370	WHEEL RIGHT ASSEMBLED	1	1

# LIFT CYLINDER



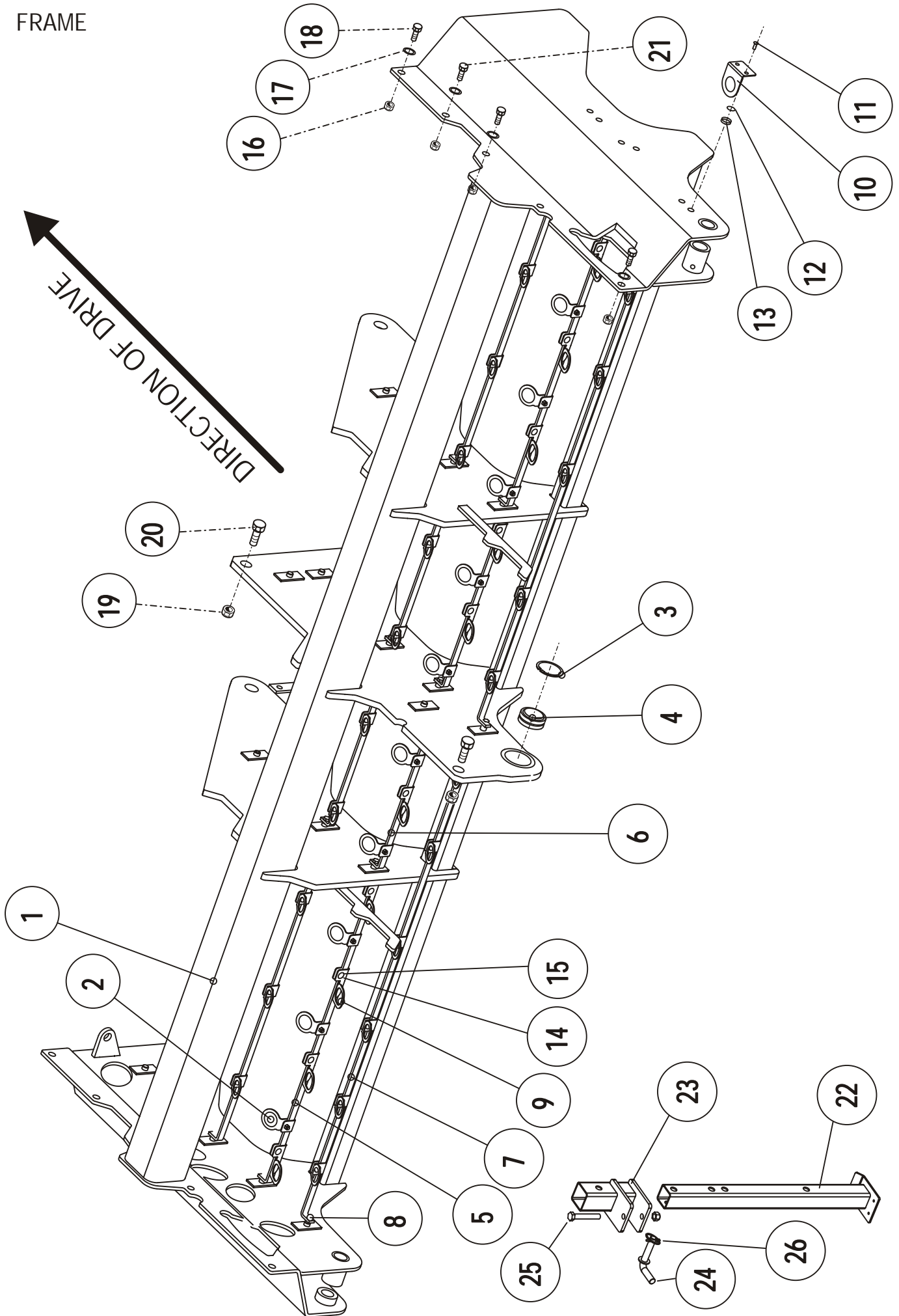
PART	CODE	NAME	PCS MAESTRO3000	PCS MAESTRO4000
1	17366	CYLINDER WELDED	1	
	1			
2	17410	LAMEL PLATE 10MM	4	4
3	17411	LAMEL PLATE 5MM	6	6
4	17412	LAMEL PLATE 2MM	8	8
5	E46204	COMPRESSION SPRING 75*23,6*3,6 H	1	1
6	A0G501514	6-SCREW M16X150 8.8 DIN931ZN	2	2
7	D30000380	DOUBLE NIPPLE 201-8 R1/2-R1/2	1	1
8	D30000212	USIT SEAL 1/2"	2	2
9		CHOKE NIPPLE 201-8 R1/2-R1/2 / Ø3	1	1
	17867	CYLINDER ASSEMBLED (1-9)	1	1

# WHEEL FRAME



PART	CODE	NAME	PCS MAESTRO3000	PCS MAESTRO4000
1	17318	WHEEL FRAME	1	
	18126	WHEEL FRAME		1
2	17867	CYLINDER ASSEMBLED	1	1
3	17339	PIN	1	1
4	17289	PIN	2	2
5	18553	SWING PLATE ASSY	6	8
6	CEGE17	BEARING	12	16
7	17521	SHAFT FOR FORK	1	
	18144	SHAFT FOR FORK		1
8	18555	REACTION BAR BASIC WELDED	12	16
9	17349	SWING PLATE FOR PRESSURE SPRINGS	12	16
10	17572	BUSHING	12	16
11	17340	PIN	6	8
12	A0C2L1514	6-SCREW M12X80 8.8 DIN931 ZN	12	16
13	AGC113014	6-NUT IL M12 DIN985-8 ZN	12	16
14	A081S1014	6-SCREW M8*55	6	8
15	CV0303430	Dymet BEARING 30/34/30	8	10
16	BJ6510001	GREASE NIPPLE M 8*1.25/45ast514	6	8
17	17667	PIN	2	2
18	BJ6157600	GREASE NIPPLE M 6	2	2
19	BA81F0004	SPLIT PIN 8X45 DIN94 ZN	12	16
20	B5L173024	WASHER M20 DIN125A ZN	12	16
21	AGG113014	NUT M16IL	12	16
22	A0A2F1514	6-SCREW M10X75 8.8 DIN931 ZN	5	5
23	Bj6500000	GREASE NIPPLE M8 STRAIGHT	3	3
24	AGA113014	6-NUT IL M10 DIN985-8 ZN	5	5
25	Ag8113014	6-NUT M8 IL	6	8
26	18812	PIN FOR REACTION BAR 22	12	16
27	21103	SPACER 17/23/5	24	32
	17366	CYLINDER WELDED (WITHOUT PLATES)	1	1

FRAME

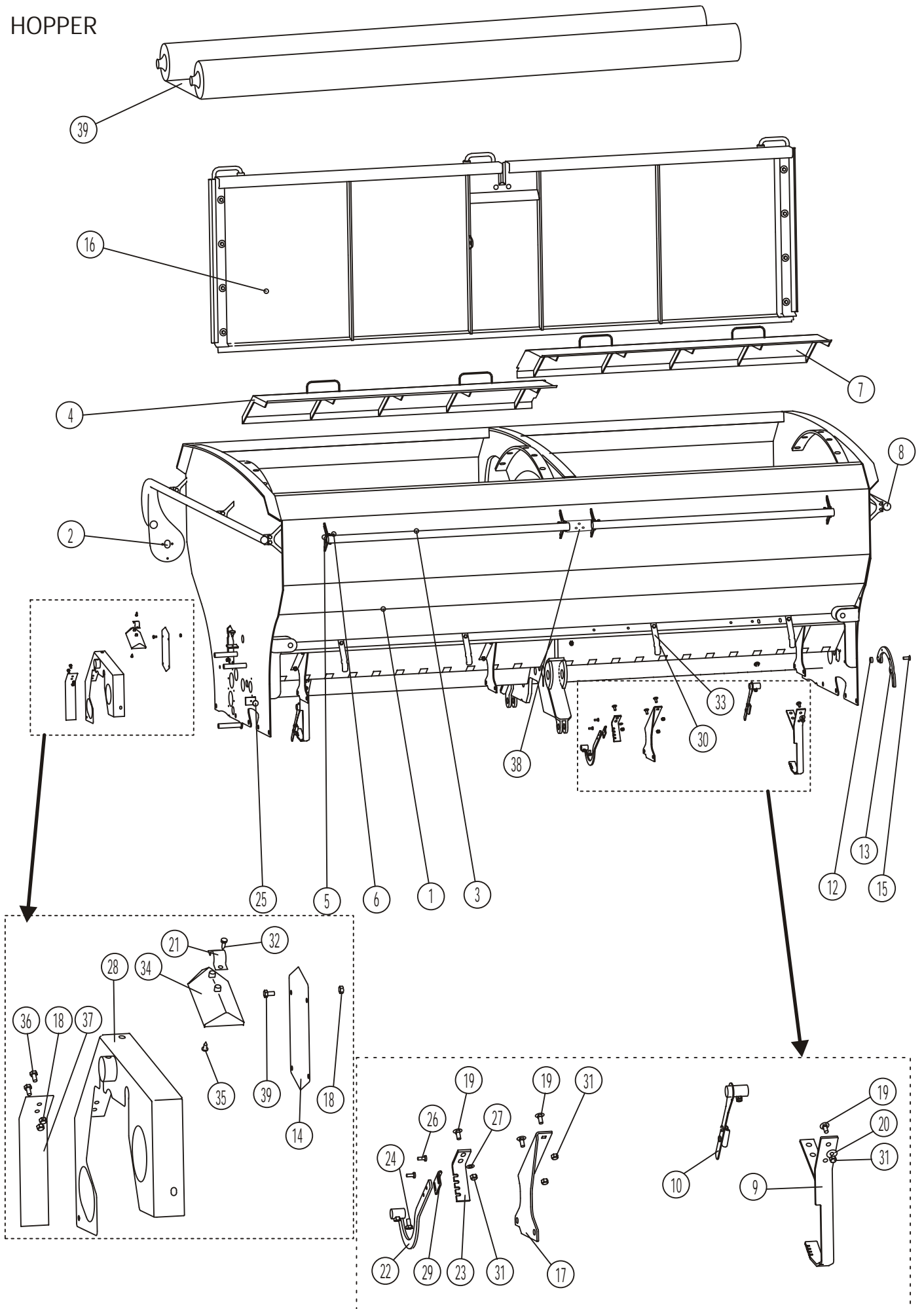


V15



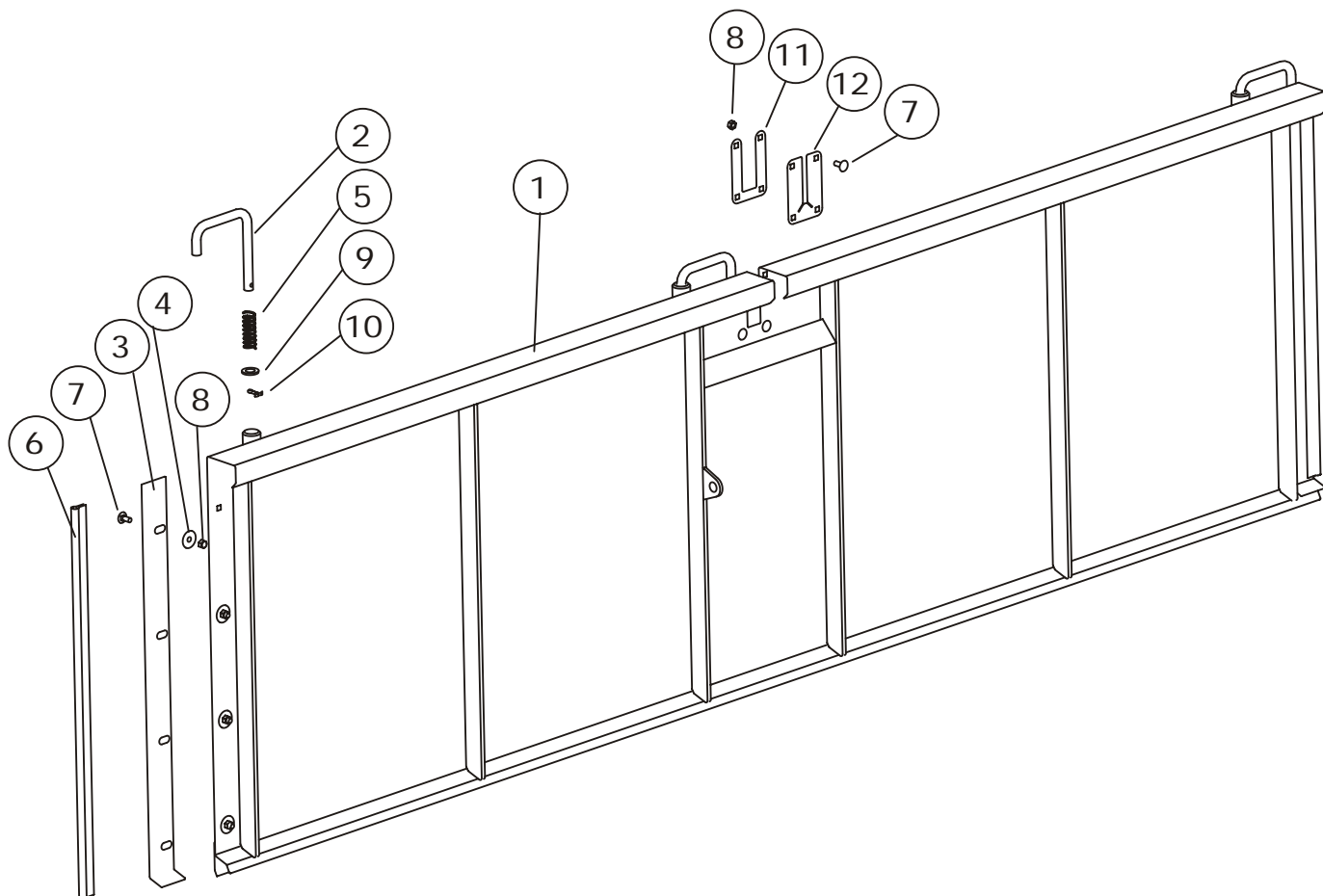
PART	CODE	NAME	PCS MAESTRO3000	PCS MAESTRO4000
1	17285	FRAME WELDED	1	
	18074	FRAME WELDED		1
2	17776	GUIDE	33	45
3	BH2220021	LOCK RING 62x2	1	1
4	CEGE40	INA GE 40 DO	1	1
5	17750	ROD L=834	4	
	17760	ROD l=1334		4
6	17754	ROD L=464	4	4
7	17760	ROD L=1334	2	
	18157	ROD L=1838		2
8	A080G1514	6-SCREW M8X16 8.8 DIN 933 ZN	20	20
9	18017	GUIDE LOWER	11	15
10	17999	SIDE GUIDE	4	4
11	A060G6024	SCREW M6X16 4.8 DIN965ZN PO	8	8
12	B560E1524	WASHER M 6 DIN125A ZN	8	8
13	AG6111014	6-NUT M 6 DIN934-8 ZN	8	8
14	A060L3014	LOCK SCREW M6*20	44	60
15	AG6113014	HEX NUT M6 IL	44	60
16	AGG113014	HEX NUT M16 IL	8	8
17	B5G102524	WASHER M16	16	16
18	A0G2L1524	HEX SCREW M16*80	2	2
19	AGR113014	HEX NUT M24 IL	2	2
20	A14076	HEX SCREW M24*60	2	2
21	A0G1A1514	HEX SCREW M16*40	6	6
22	17568	SUPPORT LEG	2	2
23	17922	BRACKET	2	2
24	14505	PIN	2	2
25	A0G3A1512	HEX SCREW M16*100	2	2
26	AGG113014	HEX NUT M16 IL	2	2

# HOPPER



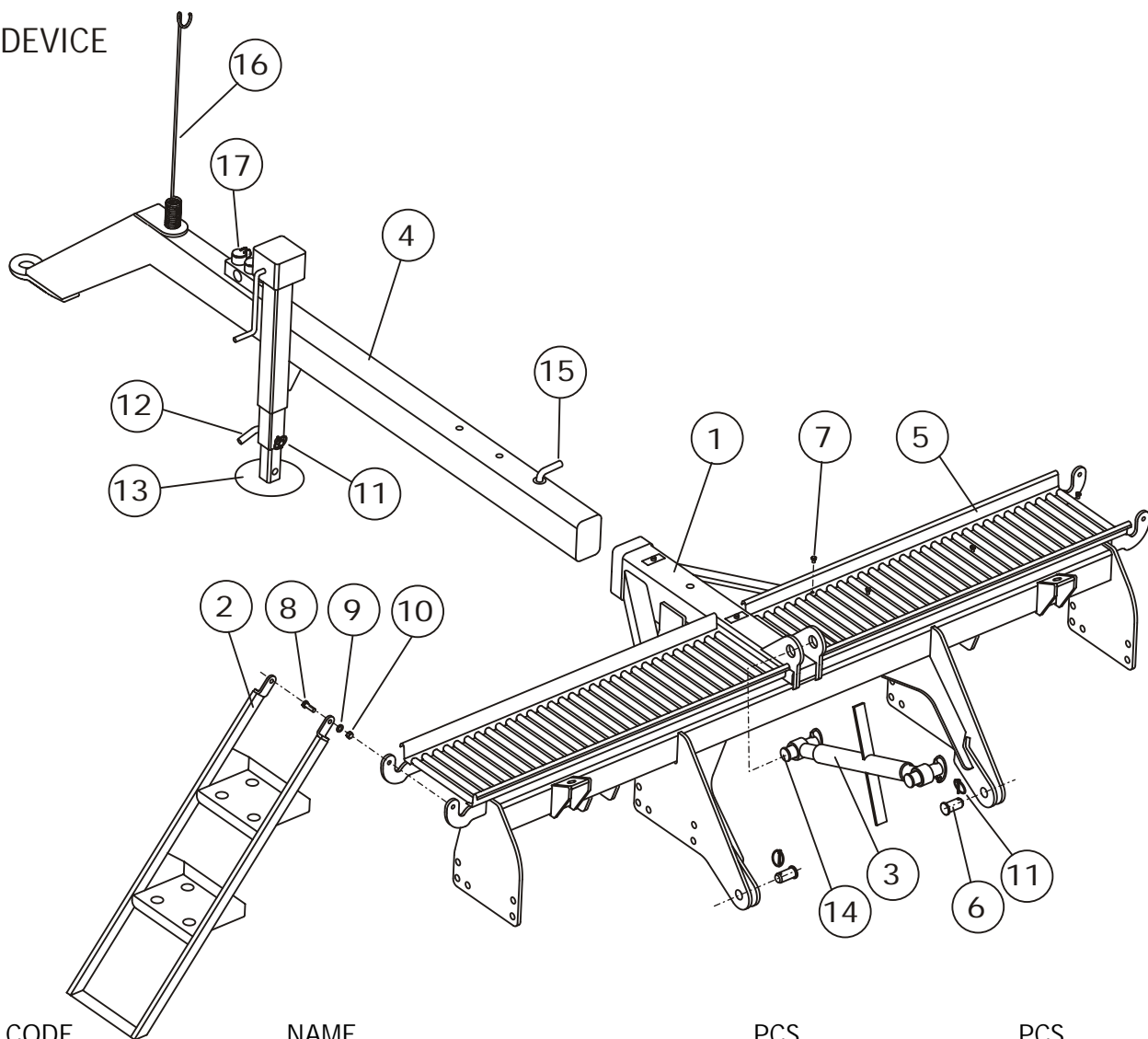
PART	CODE	NAME	PCS MAESTRO3000	PCS MAESTRO4000
1	17215	HOPPER 3000 WELDED	1	
	18085	HOPPER 4000 WELDED		1
2	17895_O	END RAILING RIGHT	1	1
3	17901	FRONT RAILING	2	
	18163	FRONT RAILING		2
4	17405	GRILLE RIGHT	1	
	18156	GRILLE 4000 RIGHT		1
5	A080S1514	6-SCREW M8X25 8.8 DIN933 ZN	20	20
6	A50710	6-NUT IL M8 A2 DIN985 AISI	34	44
7	17403	GRILLE LEFT	1	
	18154	GRILLE 4000 LEFT		1
8	17895_V	END RAILING LEFT	1	1
9	17676	SCALE PLATE	2	2
10	17673	LEVER ASSEMBLED	2	2
12	13445	BUSHING	2	2
13	17705	SCALE PLATE	1	1
14	18021	COVER PLATE	1	1
15	A07330	6-NOTCH SCREW UPP.M10X30 10.9 DIN799	2	2
16	17526	PARTITION WALL ASSEMBLED	1	
	18149	PARTITION WALL ASSEMBLED		1
17	17720	BRACKET	4	4
18	AG6113014	6-NUT IL M 6 DIN985-8 ZN	6	6
19	A05150	LOCK SCREW M8X20 A2 DIN 603 AI	19	19
20	B60800	WASHER M 8 DIN9021 ZNK	8	8
21	160828	BEARING UPPER SIDE	3	4
22	137151	BOTTOM FLAP SHAFT LEVER	1	1
23	13272	BOTTOM FLAP LEVER POSITION PLATE	1	1
24	A080G1514	6-SCREW M8X16 8.8 DIN 933 ZN	5	5
25	A01560	FINGER SCREW M6X10 PLASTIC	2	2
26	A02100	GROOVE SCREW M6X16 A2 DIN 7985 POZ	2	2
27	B580H1624	WASHER M 8 DIN125A ZN	2	2
28	18303	COVER WELDED	1	1
29	161505	LOCKER	1	1
30	17963	LOCKER	4	4
31	AG8113014	6-NUT IL M 8 DIN985-8 ZN	8	8
32	A670G9824	X-SCREW4.8X16 A2 DIN7981C POZ	6	6
33	17965	STIFFENER	4	4
34	D17941	TRIANGULAR PIECE	22	30
35	A670A9824	X-SCREW 4.8X13 A2 DIN7981C POZ	22	30
36	A060C1024	6-SCREW M6X12 8.8 DIN 933 ZN	6	6
37	17939	MECHANISM COVER SMALL	1	6
38	18441	SUPPORT	1	1
39	D17173	TARPAULIN COVER	1	
	D18162	TARPAULIN COVER		1

# PARTITION WALL



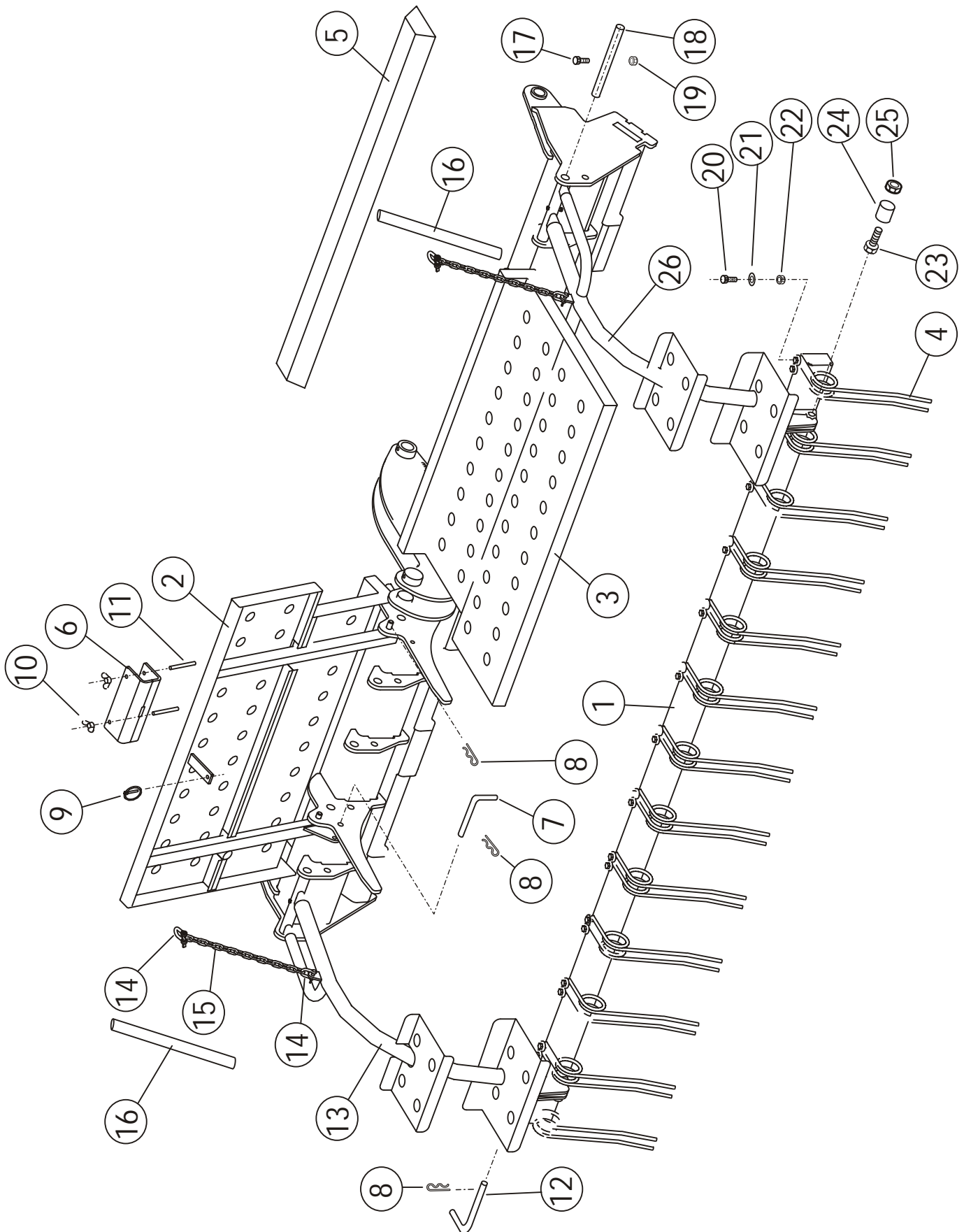
PART	CODE	NAME	PCS	
			MAESTRO3000	MAESTRO4000
1	17604	PARTITION WALL	1	
	18147	PARTITION WALL		1
2	17528	LOCK GRIP	3	1
3	17169	SEALING LIST	2	2
4	14591	WASHER	8	8
5	D14107	COMPRESSION SPRING	3	3
6	D40001264	SEAL STRAP	2	2
7	A05150	LOCK SCREW M8X20 A2 DIN 603 AI	12	12
8	A50710	6-NUT IL M8 A2 DIN985 AISI	12	12
9	B5G102524	WASHER M16 DIN125A ZN	3	3
10	BA5100004	SCISSOR COTTER 5X30 DIN94 ZN	3	3
11	17889	SEAL BRACKET	1	1
12	D17891	SEAL RUBBER	1	1
	17526	PARTITION WALL ASSEMBLED	1	
	18149	PARTITION WALL ASSEMBLED		1

DRIVE DEVICE



PART	CODE	NAME	PCS	
			MAESTRO3000	MAESTRO4000
1	18934	DRAWBAR FRAME	1	
	18933	DRAWBAR FRAME		1
2	17933	STEPS	1	1
3	17664	TOP LINK	1	
4	18230	DRAWBAR	1	1
5	17976	PLATFORM	2	
	18174	PLATFORM		2
6	17558	PIN	2	2
7	A080C1522	6-SCREW M8X12 8.8 DIN 933 ZN	8	8
8	A0C1A1014	6-SCREW M12X40 8.8 DIN933 ZN	2	2
9	B5C0R2024	WASHER M12 DIN125A ZN	2	2
10	AGC113014	6-NUT IL M12 DIN985-8 ZN	2	2
11	BE8600002	RING PIN 8X45	6	6
12	14505	PIN	1	1
13	15679	SUPPORT LEG EXTENSION	1	1
14	17667	PIN	1	1
15	14504	PIN	1	1
16	29229	HYDRAULIC HOSE SUPPORT	1	1
17	D24323	HOSE BRACKET	4	4

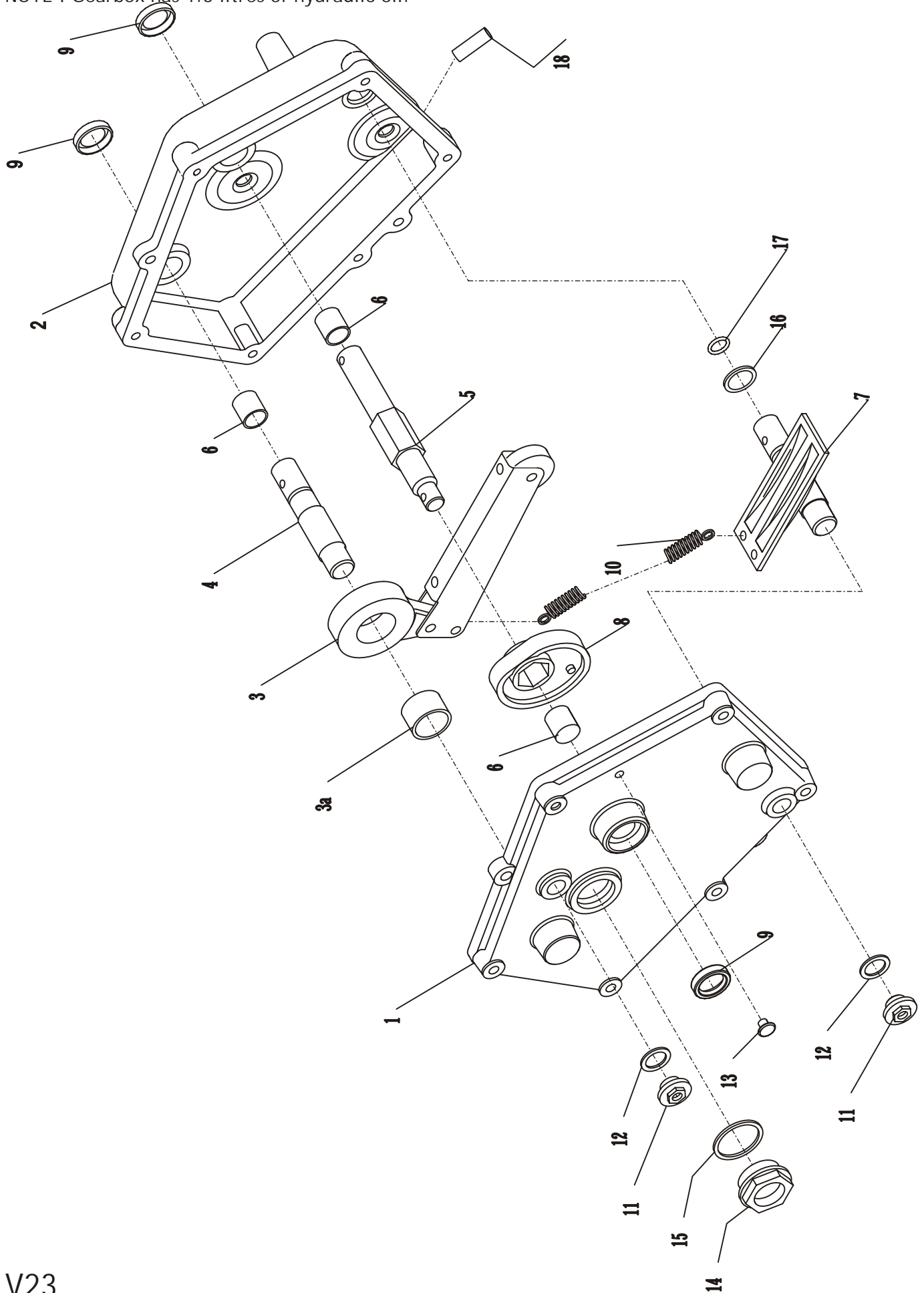
# REAR PLATFORM AND FOLLOWING HARROW



PART	CODE	NAME	PCS MAESTRO3000	PCS MAESTRO4000
1	17511	HARROW FRAME	1	
2	17353	HARROW FRAME	1	1
3	17334	STEP LEFT	1	1
4	17485	STEP RIGHT	1	1
5	17663	STEP RIGHT	26	34
6	18241	HARROW TINE	2	
7	13985	CALIBRATION TRAY	1	2
8	BD3011404	CALIBRATION TRAY	2	1
9	BEC000002	SERVICE SUPPORT WELDED	1	2
10	AGA11J014	PIN	2	2
11	A0A3A1024	PIN	4	4
12	18125	R-CLIP 4MM DIN11024 ZN	1	1
13	17478	RING PIN 10X40 L=40 ZN	2	2
14	BC3000002	WING NUT M10 DIN315 ZN	2	2
15	17626	6-SCREW M10X100 8.8 DIN933 MUS	2	2
16	18524	PIN	2	2
17	AO61A1524	HARROW ARM LEFT	1	1
18	17625	SCREW SHACKLE M8	2	2
19	AG6113014	CHAIN	2	2
20	A0A151014	COVER HOSE	2	2
21	134110000	HEX SCREW M6*40	2	2
22	AGA113014	PIN	2	2
23	A13650	HEX NUT M6 IL	2	2
24	18100	HEX SCREW M10*35	26	34
25	AGL113014	WASHER	26	34
26	17486	HEX NUT M10 IL	26	34
		HEX SCREW M20*50	2	2
		BUSHING	2	2
		HEX NUT M20 IL	2	2
		HARROW ARM RIGHT	1	1

# GEARBOX MECHANISM

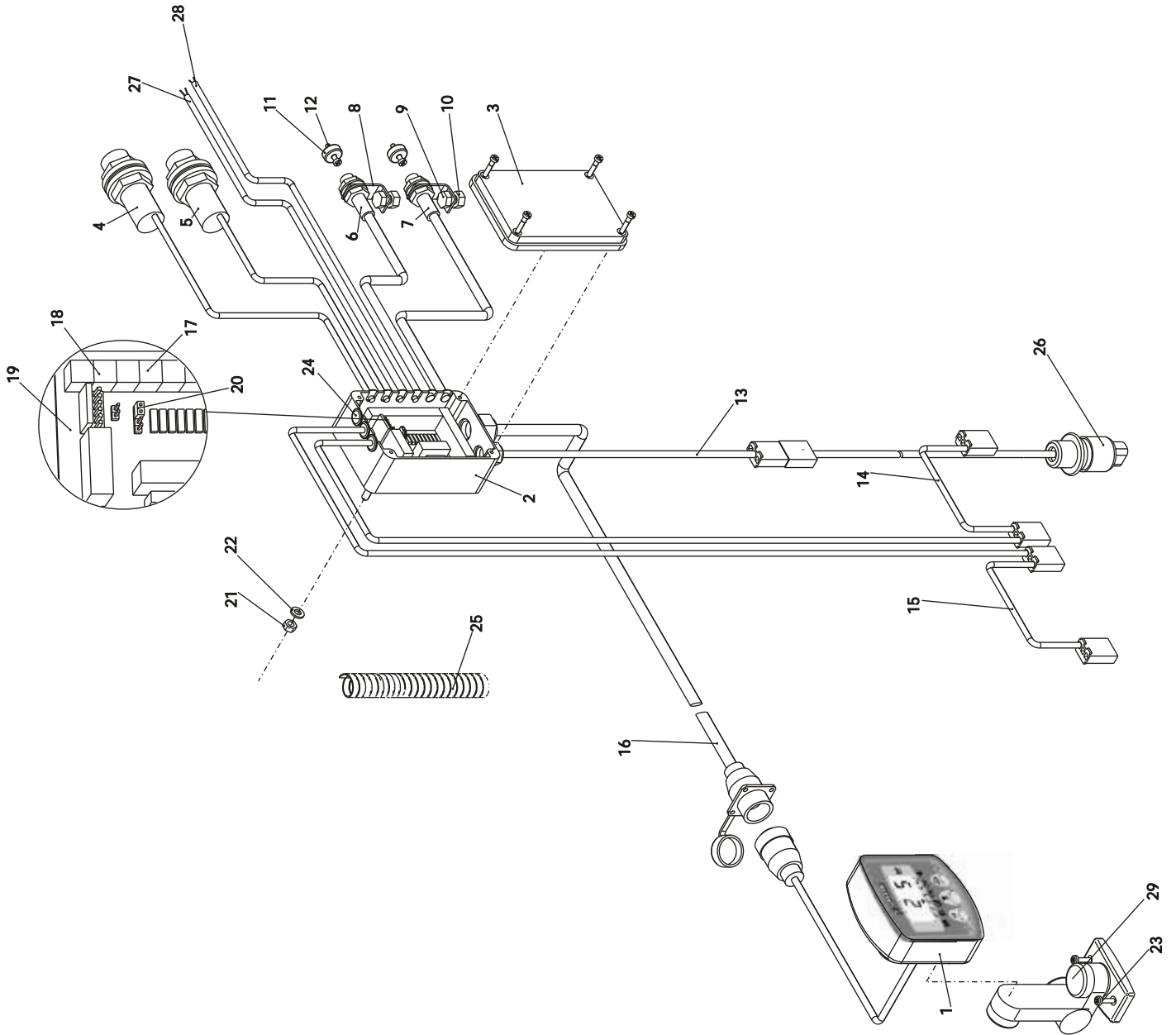
NOTE ! Gearbox has 1.3 litres of hydraulic oil.





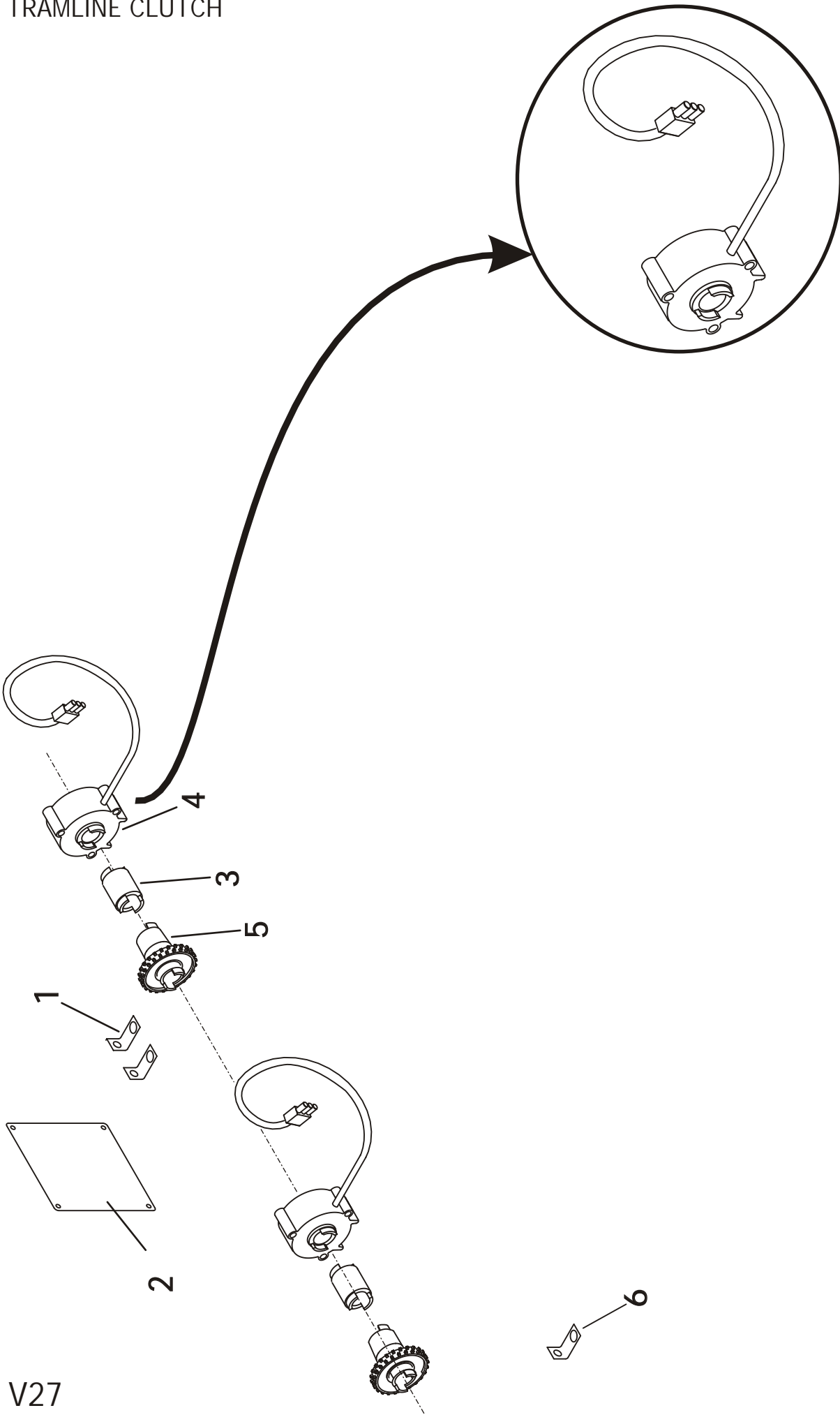
PART	CODE	NAME	PCS	
			MAESTRO3000	MAESTRO4000
1	37721		1	1
2	033007		1	1
3	370717		2	2
3a	31731		2	2
4	37718		1	1
5	053658		1	1
6	54555		3	3
7	724128		1	1
8	063315		2	2
9	004626		3	3
10	045208		2	2
11	37716		2	2
12	37723		2	2
13	080809		1	1
14	045210		1	1
15	37722		1	1
16	58386		1	1
17	31810		1	1
18	080531		1	1
	17204	GEARBOX ASSEMBLED	1	1

# WIZARD CONTROL UNIT

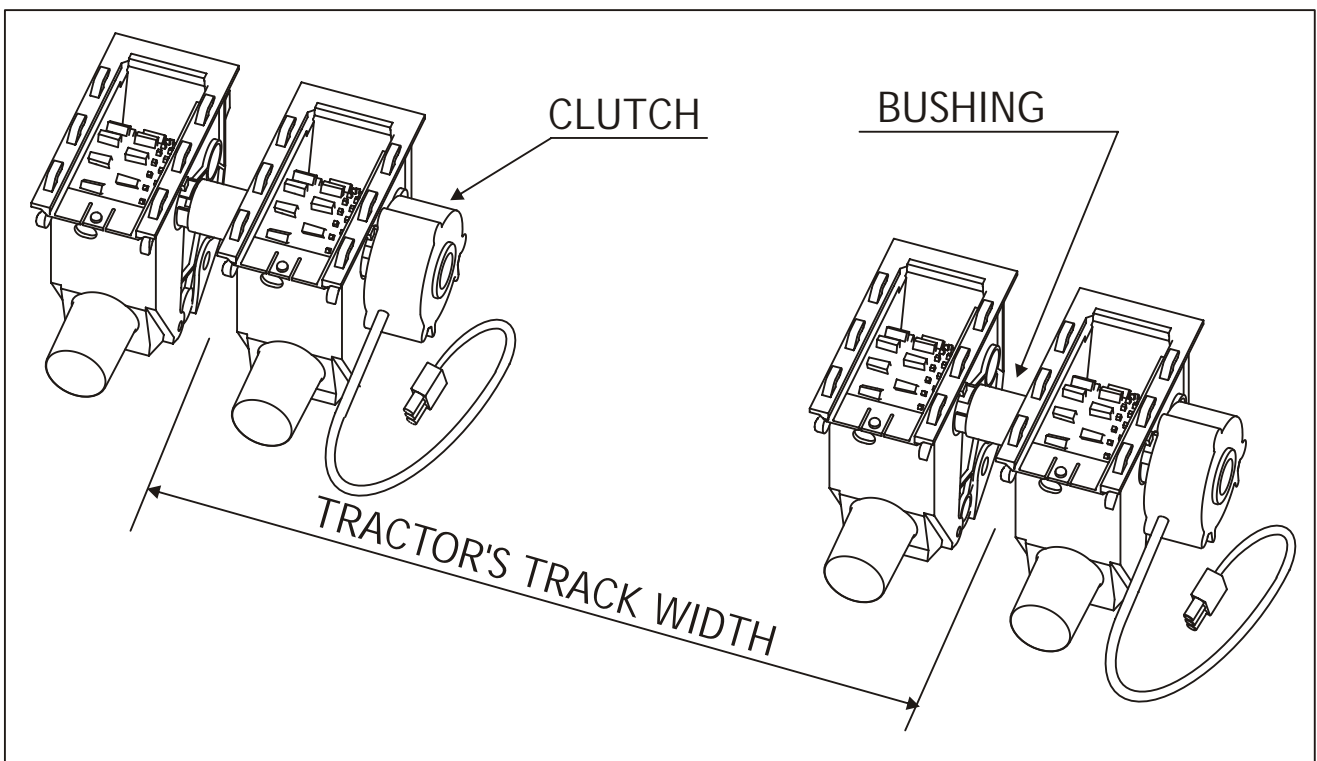


VIITE REF. ANM. REF.	NRO NR. NR. NO	KOODI KOD CODE CODE	NIMI KE	BESKRIVNING	BESCHREIBUNG	DESCRIPTION
1	S/HU/306-2-002	D40585	MONITORI KYTKENTÄRASIA KANSI	MONITOR KOPPLINGSKÅPA DACK	MONITOR ANSCHLUSSDOSE	INSTRUMENT JUNCTION BOX
2						JUNCTION BOX LID
3	S/F713-009		ANTURI/APULANTA	SENSOR/GÖDSEL	IMPULSUGEBER/DÜNGER	SENSOR/FERT.LEVEL
4	S/F713-009		ANTURI/SIEMEN	SENSOR/FRÖNIVÄ	IMPULSUGEBER/KERN	SENSOR/SEED LEVEL
5	S/Z782-006		ANTURI/NOPEUS	SENSOR/HASTIGHET	IMPULSUGEBER/TEMPO	SENSOR/SPEED
6	S/Z782-006		ANTURI/LASKURI	SENSOR/BERÄKNING	IMPULSUGEBER/ZÄHLER	SENSOR/TL. COUNT
7	14837	3-14837	ANTURIN PIDIN	SENSORHÄLLARE	HALTER FÜR IMPULSgeber	SENSOR HOLDER
8	A080G1514	M8 X 16	KUUSIORUUVI	SEKANTSKRUV	SECHSKANTSCHRAUBE	HEX SCREW
9						
10	Ag8113014	M8	KUUSIOMUTTERI	SEKANTMUTTER	SECHSKANTMUTTER	HEX NUT
11	S/MG/193-1-020	16 X 6	MAGNEETTI	MAGNET	MAGNET	MAGNET
12		M4	MAGN.KIIN.RUUVI	MAGNET FÄST.SKRV	MAGN.AUFSPANNSCHRAUBE	SCREW, FOR MAGNET
13	S/CB/306-1-020		SÄHKÖJOHDIN	STRÖMLEDNING	STROMLEITER	POWER LEAD
14	S/CB/306-1-025		AJOURAMERK. 2	KÖRSPÄRMÄRKÖR 2	FAHRSTRASSE BESCHRIFTUNG 2	TRAMLINE 2
15	S/CB/306-1-024		AJOURAMERK. 1	KÖRSPÄRMÄRKÖR 1	FAHRSTRASSE BESCHRIFTUNG 1	TRAMLINE 1
16	S/CB/306-1-021		JOHTO MONITORILLE	LEDNING TILL MONIT.	LEITER FÜR MONITOR	INSTRUMENT LEAD
17	S/T602-102		2-NAPAINEN IDC	2-POLIG IDC	2-POL IDC	2-WAY IDC
18	S/T602-103		3-NAPAINEN IDC	3-POLIG IDC	3-POL IDC	3-WAY IDC
19	S/A341-001		PIIRILEVY	KRETSKORT	SCHALTBRETT	CIRCUIT BOARD
20	S/T607-040		JUMPPERI "HYPPYL."	JUMPER LINK		JUMPER LINK/JUMPER LINK
21	A50460	M6	KUUSIOMUTTERI	SEKANTMUTTER	SECHSKANTMUTTER	HEX NUT
22	B60505	M6 DIN 125	ALUSLEVY	BRICKA	UNTERLEGRING	WASHER
23		4 X 18	PELTIRUUVI	SKRUV	SCHRAUBE	SCREW
24	S/G730-014		LÄPIVIENTIERISTE	ISOLERING (GUMMI)	ISOLATION AUS GUMMI	GROMMET
25	D55112	SS 32 - 400mm	SUOJASPIRAALI	SKYDDSPIRAL	DECKUNG SPIRALE	PROTECTION SPIRAL
26	S/CB/306-2-020		SÄHKÖJOHDIN	STRÖMLEDNING	STROMLEITER	POWER LEAD
27			SÄHKÖJOHDIN	STRÖMLEDNING	STROMLEITER	POWER LEAD
28			SÄHKÖJOHDIN	STRÖMLEDNING	STROMLEITER	POWER LEAD
29	K/WIZ/MTG/BKT		KIINNITYSJALKA	FÄSTDOTALJ	SPANNGLIED	MOUNTING BRACKET

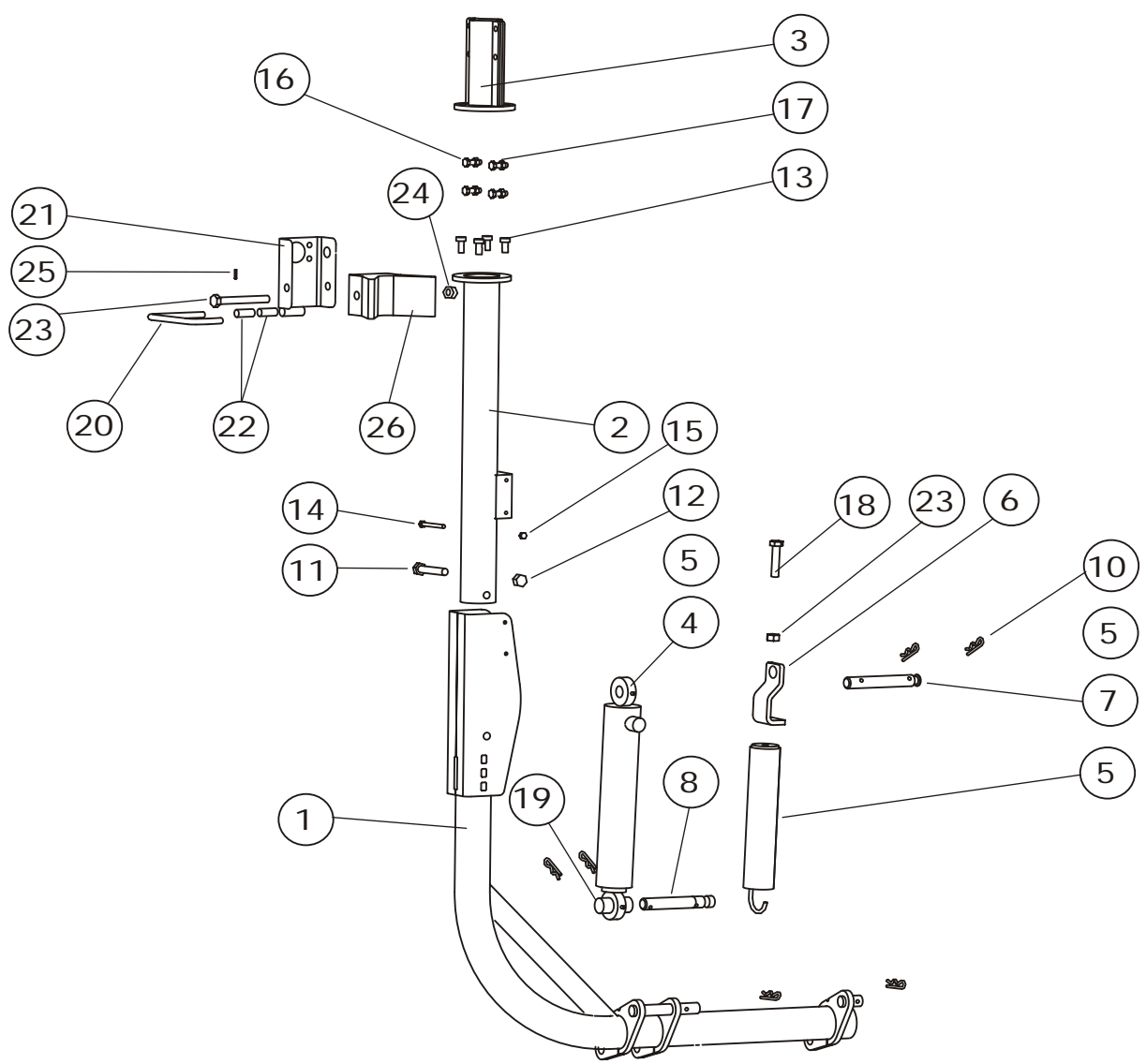
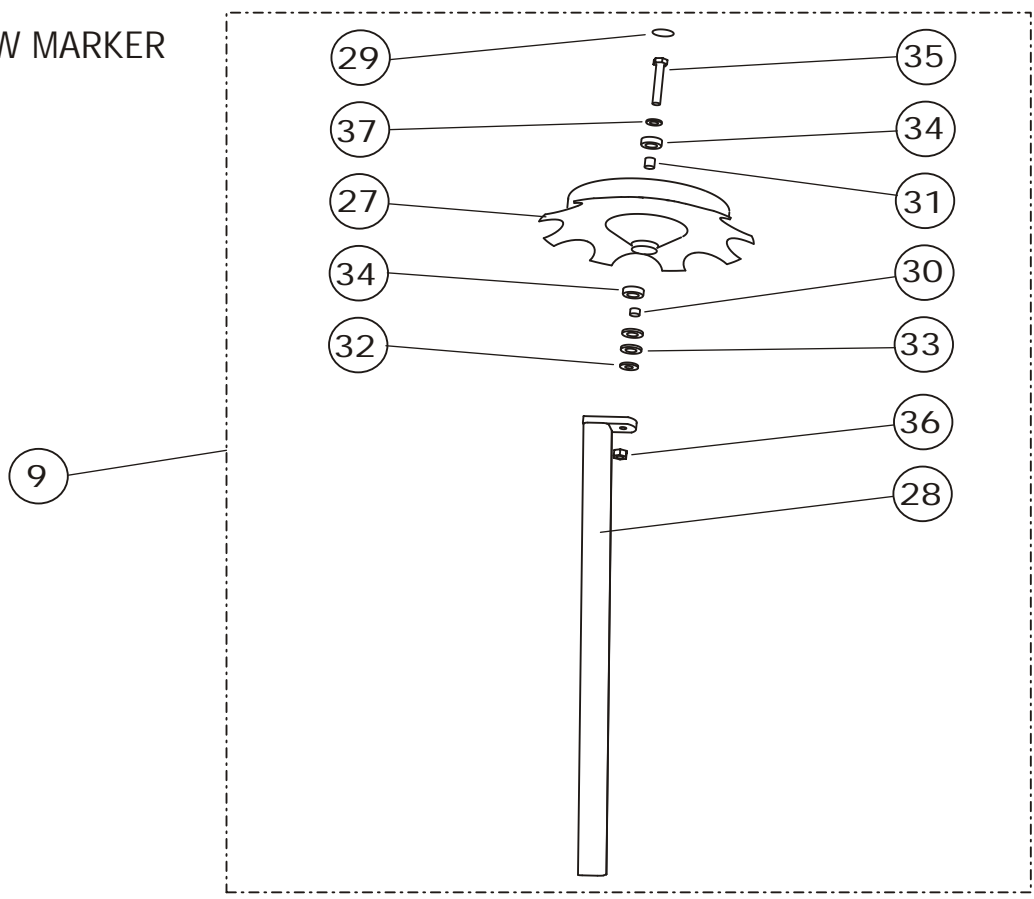
# TRAMLIN CLUTCH



PART	CODE	NAME	PCS	
			MAESTRO 3000	MAESTRO 4000
1	14837	BRACKET	2	2
2	18009	ELECTRIC BOX BASE	1	1
3	17510	BUSHING	2	2
4	D17967	CLUTCH	2	2
5	17974	FREE FEED ROLLER	4	4
6	18548	BRACKET	1	1

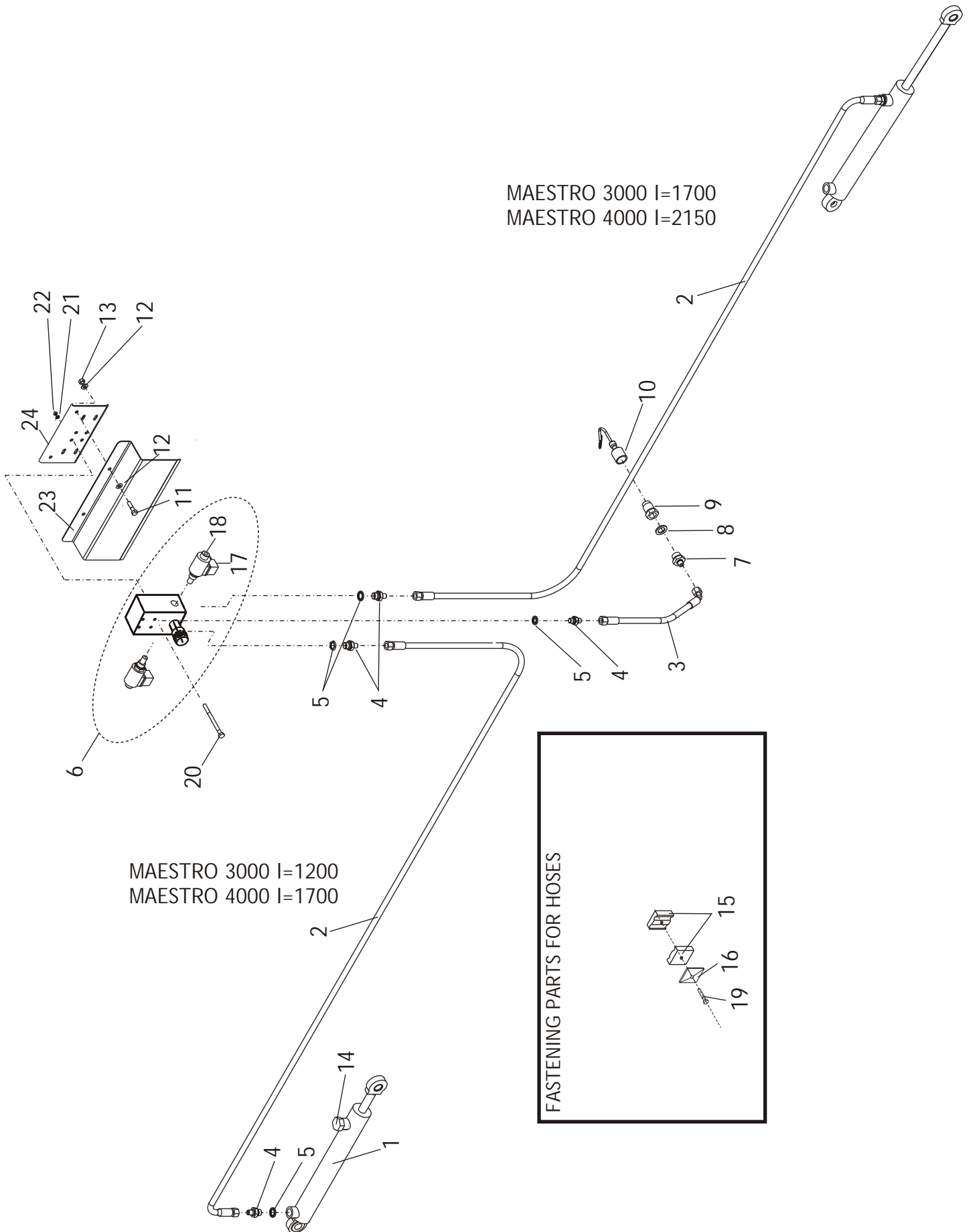


ROW MARKER



PART	CODE	NAME	PCS	
			MAESTRO3000	MAESTRO4000
1	17501	ARM WELDED LEFT	1	1
	17628	ARM WELDED RIGHT	1	1
2	17507	OUTER PIPE WELDED	2	2
3	17508	TENSION-PART	2	2
4	17617	CYLINDER 50/40-250	2	2
5	766600	SPRING ASSEMBLED	2	2
6	17619	PLATE	2	2
7	17616	PIN UPPER	2	2
8	17615	PIN LOWER	2	2
9	17849	TOP ARM ASSEMBLED LEFT	1	
	17788	TOP ARM ASSEMBLED RIGHT	1	
	18195	TOP ARM ASSEMBLED LEFT		1
	18196	TOP ARM ASSEMBLED RIGHT		1
10	BD0116	R-CLIP 5MM DIN11024 ZN	12	12
11	A0C2A1514	6-SCREW M12X70 8.8 DIN931ZNC	2	2
12	AGC111014	6-NUT M12 DIN934-8 ZN	4	4
13	AOAOL4514	6-NOTCH SCREW M10X20 8.8 DIN 912ZN	8	8
14	A06201514	6-SCREW M6X60 8.8 DIN 931 ZN	2	2
15	AG6111014	6-NUT M 6 DIN934-8 ZN	2	2
16	A080S1514	6-SCREW M8X25 8.8 DIN933 ZN	8	8
17	AG8111014	6-NUT M 8 DIN934-8 ZN	4	4
18	A0C3A1024	6-SCREW M12X100 8.8 DIN933ZNC	2	2
19	17743	BUSHING	4	4
20	17896	LOCK	2	2
21	17859	BRACKET WELDED LEFT	1	1
	17860	BRACKET WELDED RIGHT	1	1
22	D56947118	COMPRESSION SPRING	4	4
23	A0C3A1014	6-SCREW M12X100 8.8 DIN931ZN	2	2
24	AGC111014	6-NUT M12 DIN934-8 ZN	2	2
25	B830G0001	ROLL PIN 3X16 DIN1481 ZNC	2	2
26	DJ000010	V-RUBBER	2	2
27	17785	DISC WELDED	2	2
28	17787	TOP ARM WELDED LEFT	1	
	17786	TOP ARM WELDED RIGHT	1	
	18191	TOP ARM WELDED LEFT		1
	18194	TOP ARM WELDED RIGHT		1
29	131324000	CAP	2	2
30	D131327000	BUSHING4-2658	2	2
31	D131326000	BUSHING4-2659	2	2
32	131328000	PLATE	2	2
33	CN2Z00200	Z-LAMEL Z002	4	4
34	CE6201000	BALL BEARING 6201	4	4
35	A0C2A1514	6-SCREW M12X70 8.8 DIN931ZNC	2	2
36	AGC111014	6-NUT M12 DIN934-8 ZN	2	2
37	B5C0R2024	WASHER M12 DIN125A ZN	2	2

# TRACK MARKER HYDRAULICS



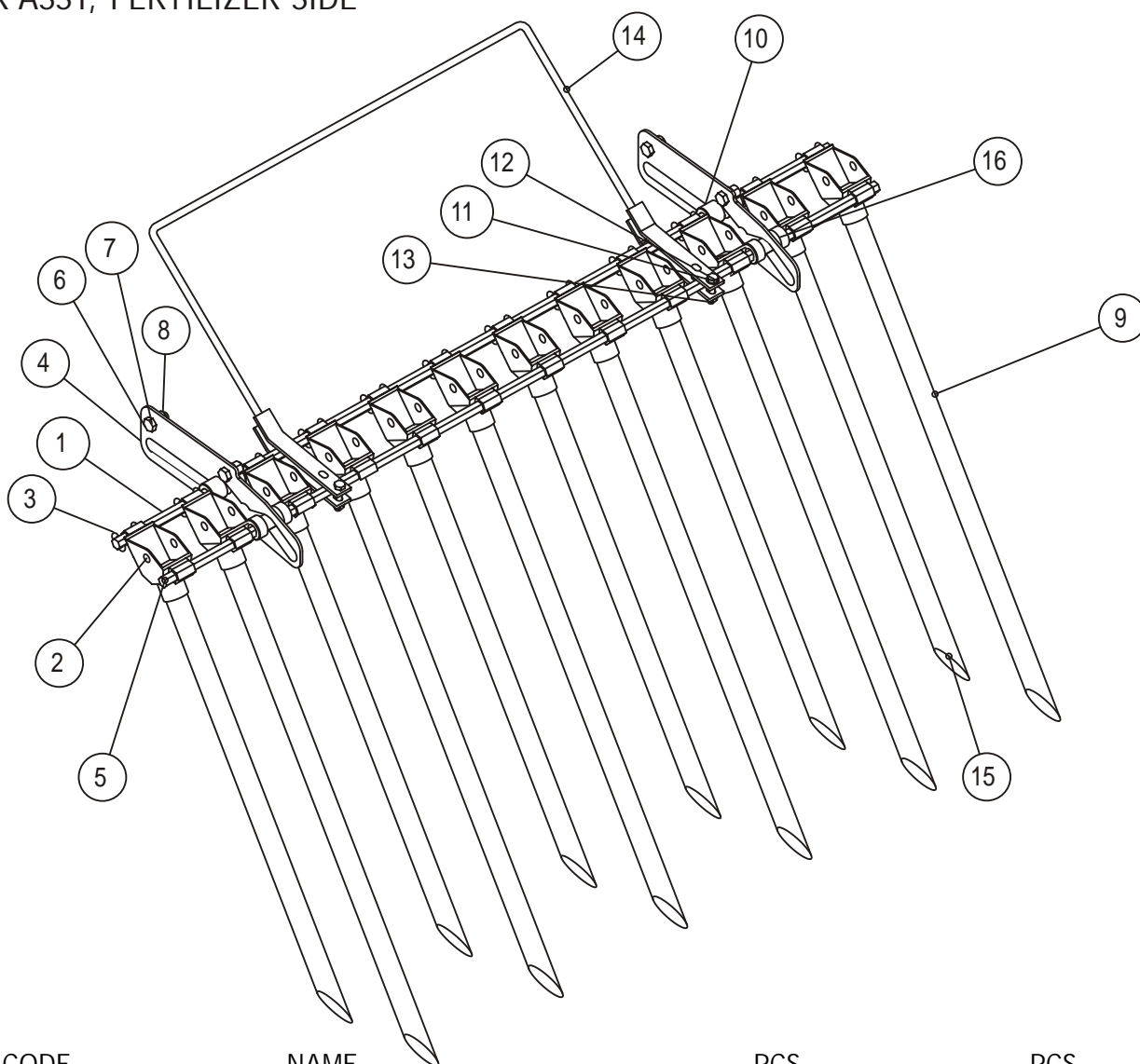


PART	CODE	NAME	PCS MAESTRO3000	PCS MAESTRO4000
1	17617	CYLINDER	2	2
2	D17682	HYDR. HOSE ASSEMBLED L=1200	1	
	D18176	HYDR. HOSE ASSEMBLED L=2150		1
	D17683	HYDR. HOSE ASSEMBLED L=1700	1	1
3	D15554B	HYDR. HOSE ASSEMBLED l=400	1	1
4	DI5292	DOUBLE NIPPLE 202-6-8		44
5	D30000211	USIT SEAL 3/8"	6	6
6	D15554A	VALVE	1	1
7		NIPPLE 1/2"		11
8	D30000212	USIT-SEAL 1/2"	1	1
9	C23072-08	FAST CONNECTOR, MALE 1/2"	1	1
10	TFA-08M	CAP	1	1
11	M8X30	SCREW	2	2
12	M8	WASHER	4	4
13	M8	NUT	4	4
14		PLUG	2	2
15	D6C214	DOUBLE BRACKET	1	1
16	A050L8024	COVER PLATE CF2-U	1	1
17	HJKOS-T57290090	SOLENOID	2	2
18	HJKOS-T57293355	2/2 CARTRIDGE VALVE	2	2
19	A02810	SCREW M6X25	1	1
20	A062A1014	SCREW M6X80		4
21	M6	WASHER	4	4
22	M6 IL	NUT	4	4
23	15544	COVER PLATE	1	1
24	17780	BRACKET	1	1



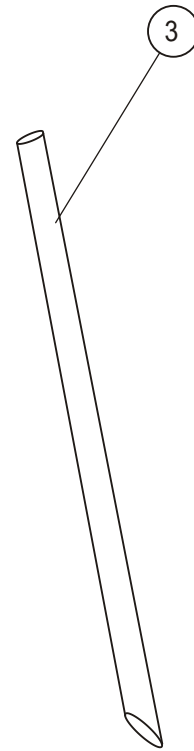
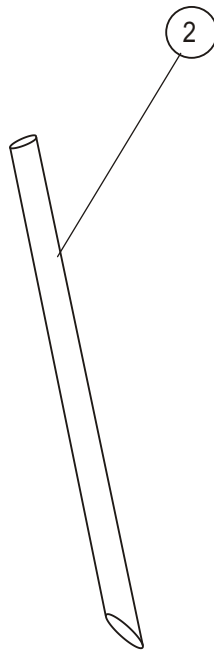
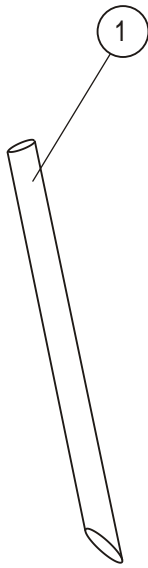
PART	CODE	NAME	PCS	
			MAESTRO3000	MAESTRO4000
1	D17684	HOSE L=6500	1	1
2	D17686	HOSE L=1200	1	1
3	D17875	HOSE L=5200	1	1
4	202-04-08	CHOKE NIPPLE	1	1
5	747-08	L-NIPPLE	1	1
6	D30000212	USIT	6	6
7	705-08-08	DOUBLE NIPPLE	2	2
8	NV-08M	QUICK COUPLING MALE	2	2
9	NV-08F	QUICK COUPLING FEMALE	1	1
10	705-08-08	CONNECTOR NIPPLE	1	1
11	17867	CYLINDER ASSEMBLED	1	1
12	17366	CYLINDER WELDED (NO LAMELS)	1	1

# HOPPER ASSY, FERTILIZER SIDE



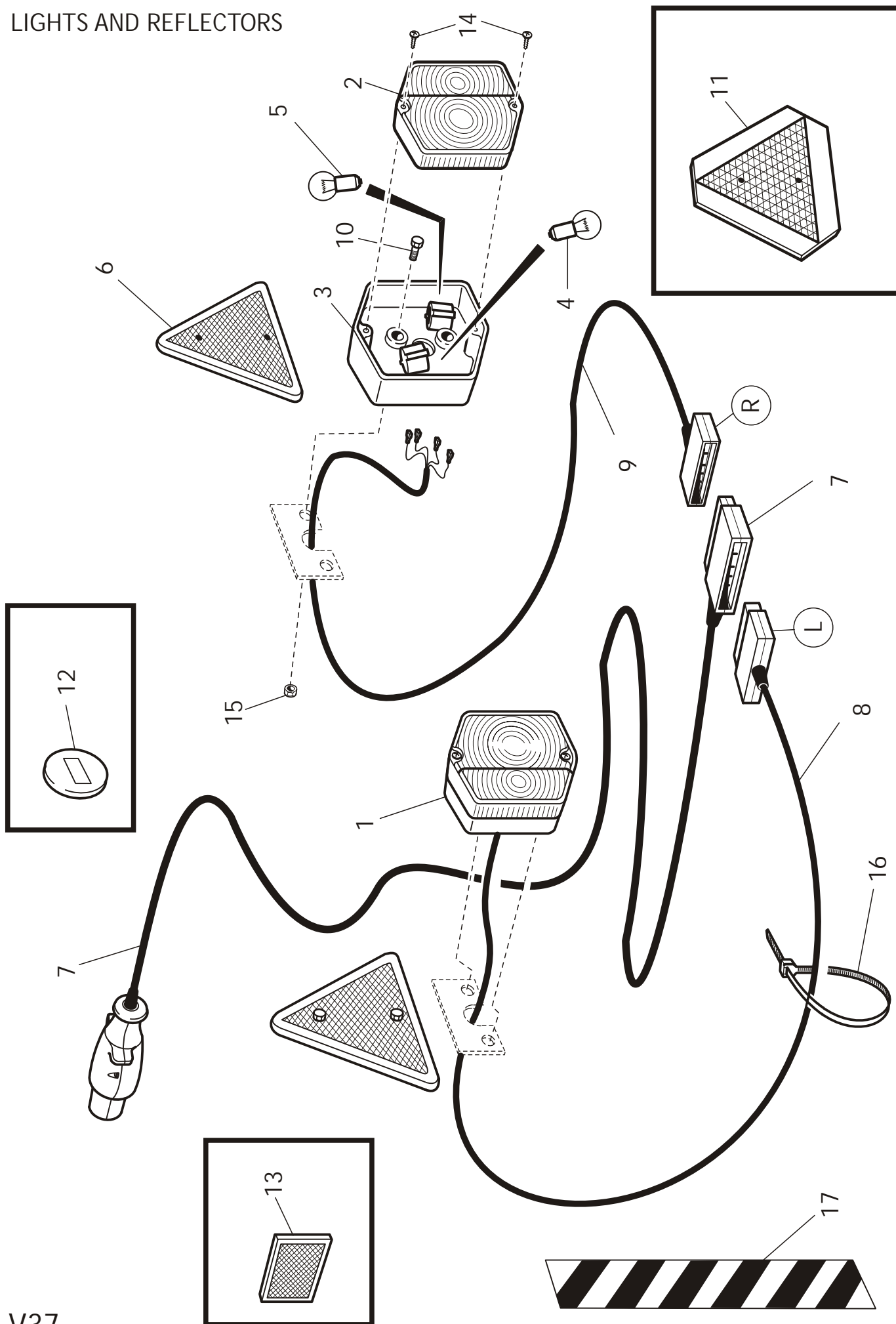
PART	CODE	NAME	PCS	
			MAESTRO3000	MAESTRO40001
1	17701	SUPPORT AXLE	2	
	18184	SUPPORT AXLE		2
2	D30119	HOPPER	24	32
3	13412	PIN	48	64
4	17719	GROOVE PLATE	4	4
5	18007	SUPPORT AXLE	2	
	18186	SUPPORT AXLE		2
6	AOA0S1524	6-SCREW M10X25 8.8 DIN933 ZN	8	12
7	B5A0MB024	WASHER M10 DIN125A ZN	16	16
8	AGA113014	6-NUT IL M10 DIN985-8 ZN	8	8
9	18050	HOSE LONG	12	16
10	17936	GLIDE BUSHING	4	4
11	B580H1624	WASHER M 8 DIN125A ZN	8	8
12	A081A1514	6-SCREW M8X40 8.8 DIN 933 ZN	4	4
13	AG8113014	6-NUT IL M 8 DIN985-8 ZN	4	4
14	18006	LEVER	2	
	21033	LEVER		2
15	18051	HOSE SHORT	12	16
16	17968	GLIDE BUSHING WIDE	4	4

# SEED-SIDE HOSES



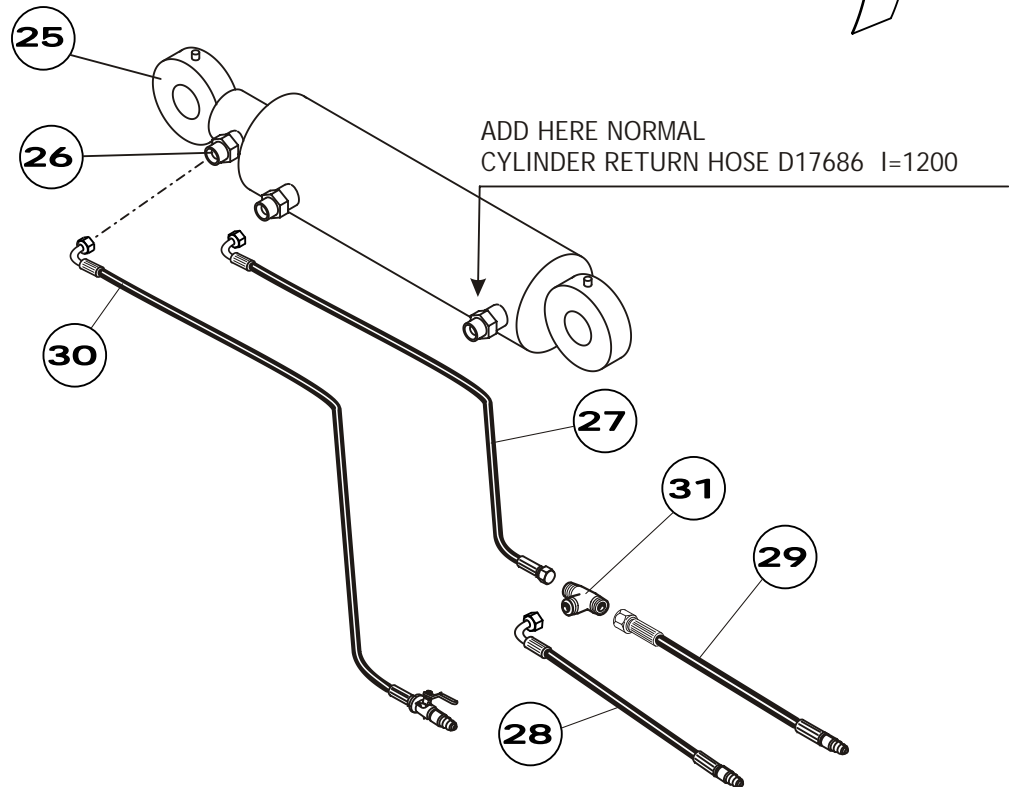
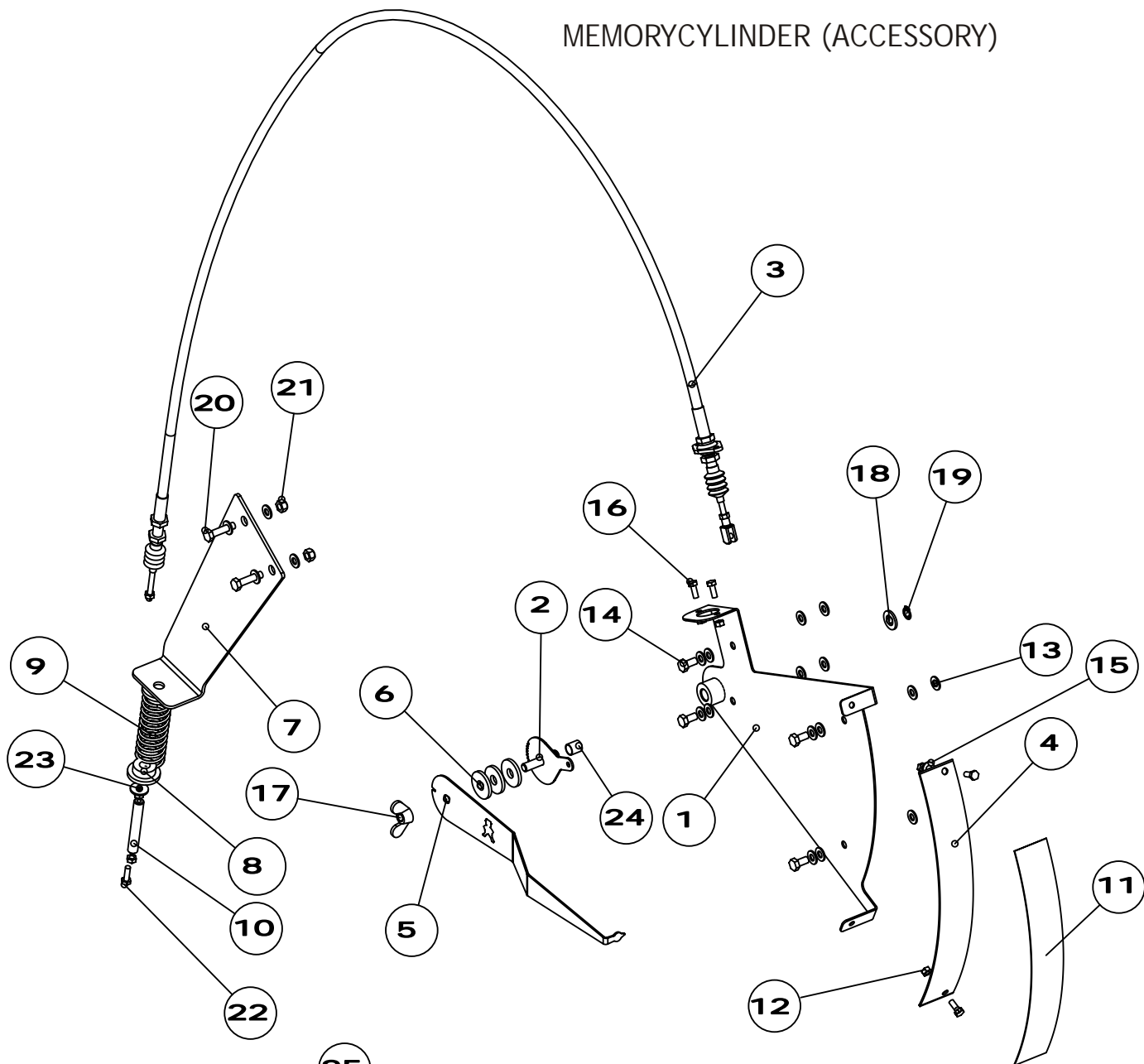
PART	CODE	NAME	PCS	
			MAESTRO3000	MAESTRO40001
1	18053	FEEDER HOSE TO BACK	11	15
2	18054	FEEDER HOSE TO SIDE	1	1
3	18052	FEEDER HOSE TO FRONT	12	16
	18058	SEED-SIDE FEEDER HOSES	1	
	18204	SEED-SIDE FEEDER HOSES		1

# LIGHTS AND REFLECTORS



PART	CODE	NAME	PCS
			MAESTRO 3000 & 4000
1	141130-000	REAR LIGHT ASSEMBLED	2
2	11301/ L	REAR LIGHT " GLASS"	2
3		REAR LIGHT BOTTOM	2
4	D40001693	12 V / 5 W BULB	2
5	D40001684	12V / 21 W BULB	2
6	D50000385	REFLECTOR TRIANGLE	2
7	CP4488	MAIN WIRING HARNESS 6 m	1
8	CP4491	WIRING HARNESS LEFT 4.8m	1
9	CP4491	WIRING HARNESS RIGHT 4.8 M	1
10		HEX SCREW M 6H20	4
11	E73261	SLOW VEHICLE SIGN TRIANGLE	1
12	D50000395	FRONT REFLECTOR WHITE	2
13	D50000396	SIDE REFLECTOR YELLOW	2
14		SCREW REAR LIGHT	4
16	E73635	CABLE TIE	10
17	CF2037	OVER-WIDE MACHINE WARNING	4

# MEMORYCYLINDER (ACCESSORY)





PART	CODE	NAME	PCS
1	18381	FRAMEPLATE WELDED	1
2	18383	TURNPLATE WELDED	1
3	D18391	CABLE FOR POINTER	1
4	18345	CURVEPLATE FOR POINTER	1
5	18343	POINTER	1
6	14987	RUBBERWASHER 4*35/12	3
7	18342	WIRE CABLE HOLDER	1
8	18371	BUSHING SPRING	2
9	D51111	SPRING 36.5*100/3.2 4-51111	1
10	18386	SPIN PIN FOR WIRE CABLE	1
11	CF18417	STICKER FOR POINTER	1
12	AG6111014	6-NUT M 6 DIN934-8 ZN	6
13	B60649	WASHER M 8 DIN125A A2 AISI	20
14	A04220	6-SCREW M8X16 A2-80 DIN 933 A	4
15	B560E1524	WASHER M 6 DIN125A ZN	2
16	A060G1024	6-SCREW M6X16 8.8 DIN 933 ZN	4
17	AGA11J014	WING NUT M10 DIN315 ZN	1
18	B5C0R2024	WASHER M12 DIN125A ZN	1
19	BH0C10011	SEGER RING FOR AXEL 12X1 DIN471	1
20	A08151514	6-SCREW M8X35 8.8 DIN 933 ZN	2
21	A50710	6-NUT IL M8 A2 DIN985 AISI	2
22	A060L1524	6-SCREW M6X20 8.8 DIN 933 ZN	1
23	B560N1524	WASHER M 6 DIN440R ZN	1
24	CV03L1215	DYMET BEARING 701 12/14/15	1
25	18310	MEMORYCYLINDER	1
26	D30000380	DOUBLE NIPPLE 1/2" / 1/2"	3
27	D18419	HOSE l=6200	1
28	D18420	HOSE l=1000 ANGLE	1
29	D18421	HOSE l=1000 STRAIGHT	1
30	D18748	HOSE l=7650	1
31	D30000379	T-CONNECTOR 712-08	1

