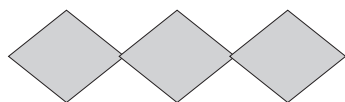


# Junkkari

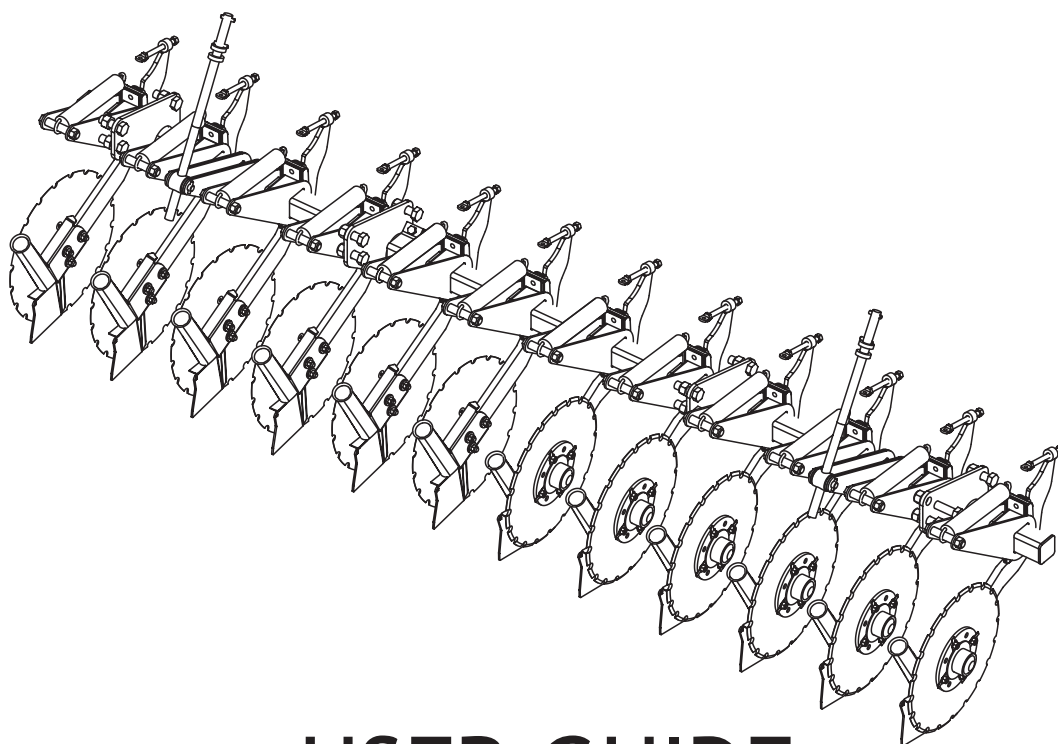


## MAESTRO

MAESTRO<sup>3000</sup>

MAESTRO<sup>4000</sup>

### FERTILIZER COULTER SET



## USER GUIDE SPARE PARTS CATALOGUE

LA09\_EN

Junkkari Oy  
62375 YLIHÄRMÄ FINLAND  
TEL. +358-(0)6-4835111  
FAX +358-(0)6-4835295  
e-mail: junkkari@msk.fi  
Internet: www.junkkari.fi

ENGLISH 

# 1 CONTENTS

- 2. DEAR CUSTOMER.....2
- 3. TECHNICAL SPECIFICATIONS.....2
- 4. PURPOSE OF USE..... 3
- 5. OPERATING PRINCIPLE..... 3
- 6. DELIVERY PACKAGE..... 3
- 7. INSTALLATION..... 3
  - 7.1 COULTERS.....4
  - 7.2 FERTILIZER TUBES..... 5
  - 7.3 FRONT LEVELER (ACCESSORY)INSTALLATION IN FRONT OF THE FERTILIZER COULTERS.... 6
- 8. CALIBRATION TEST.....7
- 9. CALIBRATION TEST TABLE FOR STANDARD GEAR..... 8
- 10. CALIBRATION TEST TABLE FOR LARGER GEAR..... 9
- 11. SPARE PARTS.....V1

# 2 DEAR CUSTOMER

We thank you for your trust and wish you the best success in your work. We ask you to familiarize yourself with this user guide, because complete understanding of the accessory, correct adjustments and careful maintenance guarantee user safety and the continued operation of the device on busy work days.

It is important to understand every section in this guide and to follow the instructions. In unclear cases you should contact the seller of the machine.

We hope that after you have read the user guide you will return the signed warranty card to the factory within 14 days of the day of delivery.



## WARNING!

This user guide is meant as an appendix to the Junkkari Maestro user guide.

Sections:

- 4 SAFETY INSTRUCTIONS
- 6.2 LIMITATIONS OF USE AND FORBIDDEN USES
- 8 TRANSPORT, HANDLING AND STORAGE OF THE MACHINE
- 9.1 PUTTING THE MACHINE IN WORKING ORDER
- 9.5 DISPOSING OF PACKAGES
- 16 TROUBLESHOOTING
- 17 WITHDRAWAL FROM ACTIVE USE
- 18 TERMS OF GUARANTEE
- 19 SCOPE OF LIABILITY

as such pertain also to a separate fertilizer coulters set. Before installation and use familiarize yourself with the corresponding instructions of the sowing fertilizer.

# 3 TECHNICAL SPECIFICATIONS

	MAESTRO 3000	MAESTRO 4000
Working width, cm	300	400
Coulters, pcs	12	16
Row spacing, cm	25	25
Weight, kg	330	440



## WARNING SIGN

The user guide uses this sign always when there is a danger to the user, the environment or to other people.

In addition, the sign is used when there is a danger to the environment or property.

## 4 PURPOSE OF USE

The purpose of the fertilizer coulters is to plant the fertilizer in a different line than the seed. In this case the Junkkari Maestro sowing machine works as a traditional sowing fertilizer machine, where the seed and fertilizer are placed in different lines, seeds at 12.5cm intervals and fertilizer at 25cm intervals.

The machine is suitable only for Junkkari Maestro sowing conditioners.

In connection with other applications, you should consult experts.

## 5 OPERATING PRINCIPLE

The fertilization coulters will locate the fertilizer at 25cm intervals between the seed lines. The coulters working depth can be adjusted with the rotation test crank. The adjustment can be made from two different adjustment screws that have been placed on both ends of the fertilizer coulters. However, we recommend that the fertilizer is placed at a minimum depth of the same depth as the seed.

The coulters pressure of the fertilizer coulters can be adjusted coulters-specifically by changing the spring force of the pressing spring.

## 6 DELIVERY PACKAGE

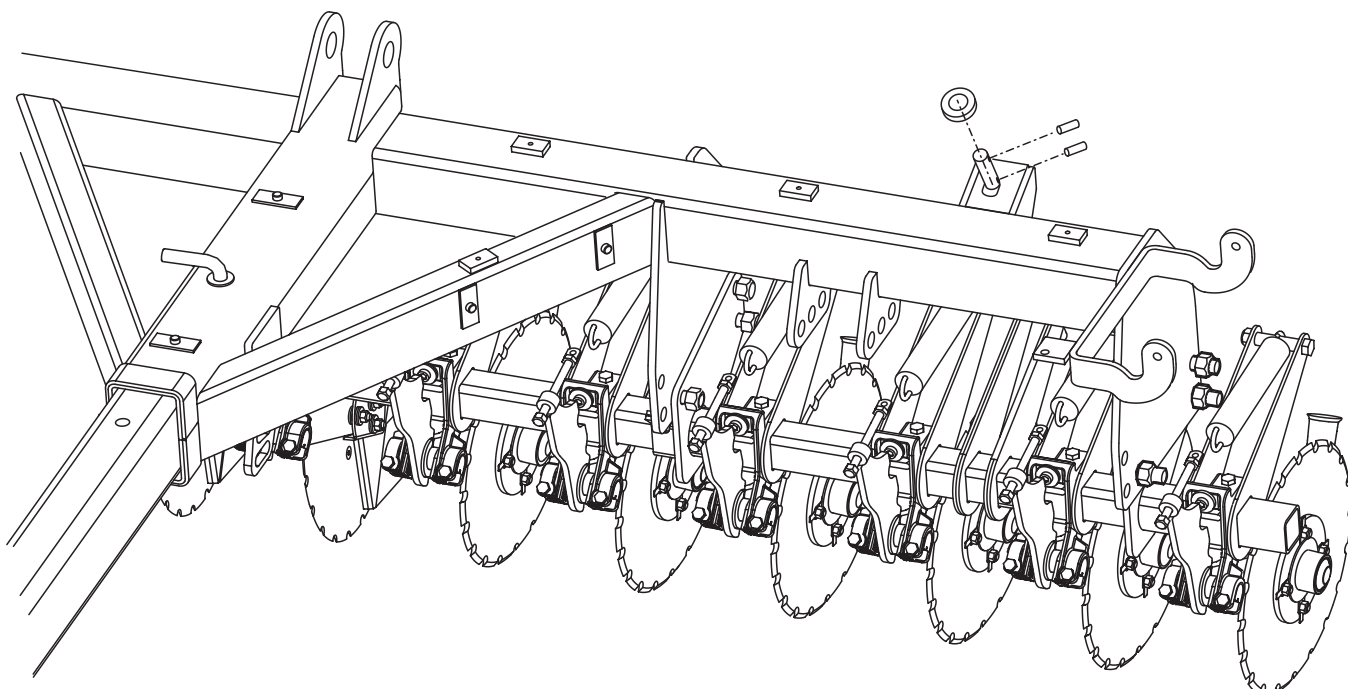
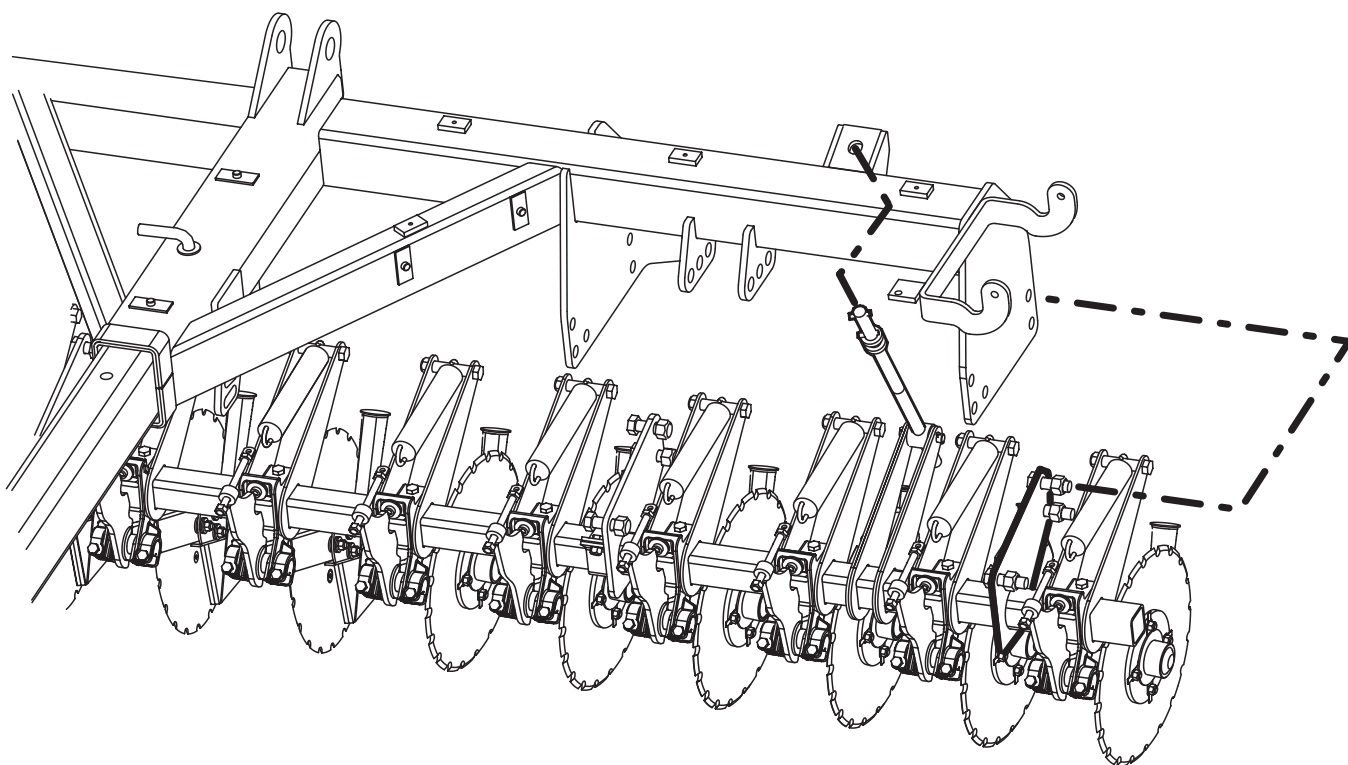
	MAESTRO 3000		MAESTRO 4000	
-Fertilizer coulters	1	pcs	1	pcs
-Feeding tubes	2*6	pcs	2*8	pcs
-Fitting parts for front leveler	1	pcs	1	pcs
-Plastic plug DPI65	24	pcs	32	pcs
-Scale assembled	1	pcs	1	pcs
-Meter hand	1	pcs	1	pcs
-User guide	1	pcs	1	pcs

## 7 INSTALLATION

### 7.1 COULTERS

If the fertilizer coulters are installed later, a minimum of two people and also a suitable and safe lifting device are required.

The coulters are installed in the brackets in the pulling device according to the pictures below, and attached in place with the M20\*60 screws and M20 nuts. There are 12 attachment screws.

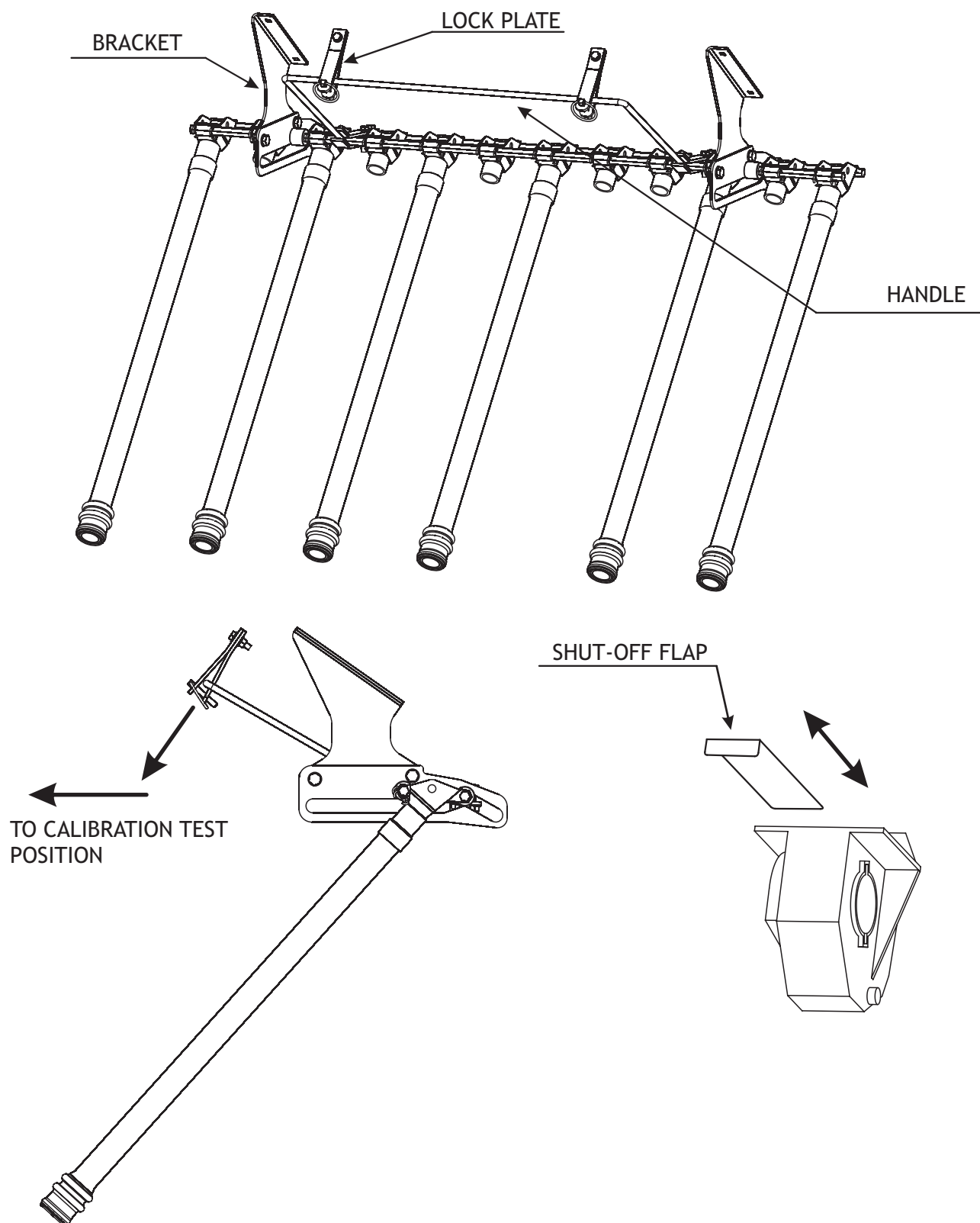


## 7.2 FERTILIZER TUBES

The fertilizer tubes are connected to the brackets in the hopper with M12\*25 screws. Feeding outlets are locked in place under the metering devices by placing the handle between the lock plates and connecting the round pins.

For the calibration test, the handle can be released and the outlets and fertilizer tubes can be pulled towards the tractor.

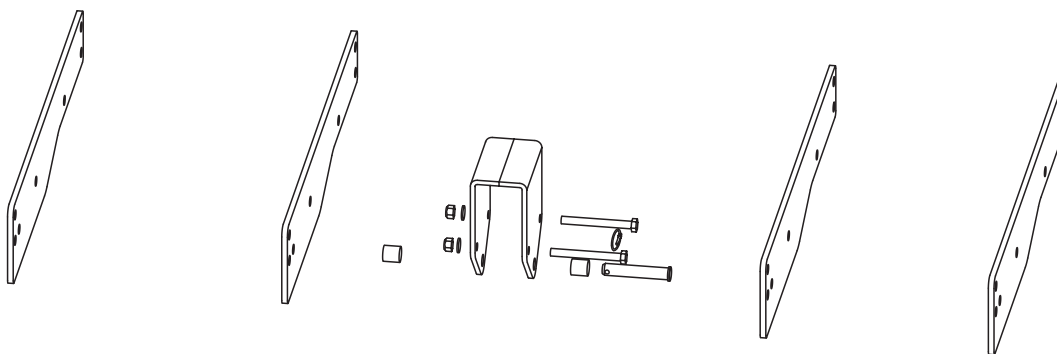
If the fertilizer coulters are installed afterwards, the shut-off flaps must be closed in metering devices without tubes.



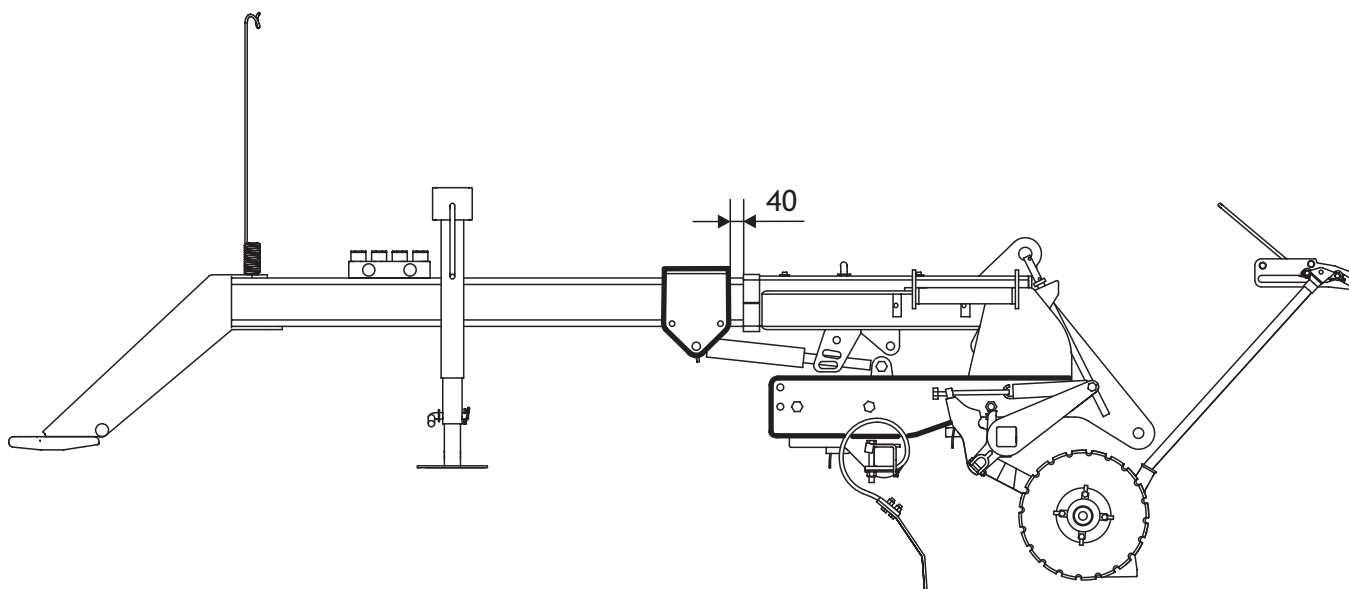
### 7.3 FRONT LEVELER (ACCESSORY) INSTALLATION IN FRONT OF THE FERTILIZER COULTERS

The fertilizer coulters include installation parts by default, with which you can install the one or two-row front leveler in front of the fertilizer coulters. The picture below shows the installation.

#### INSTALLATION PARTS



#### FRONT LEVELER INSTALLED



## 8 CALIBRATION TEST

The calibration test has been explained in more detail in the Maestro user manual. Please note that it is possible to use two different sprockets with the ground wheel chain, which will of course affect the rotations in the calibration test. The calibration test table for standard ratio is on page 8. Page 9 includes a table for faster ratio.

THE MACHINE IS DELIVERED WITH FASTER RATIO IF SEPARATE FERTILIZER COULTERS ARE INSTALLED.

		STANDARD RATIO 1:1.7	
Z13		<b>MAESTRO</b> <sup>3000</sup>	15.75 r / 100m <sup>2</sup>
		<b>MAESTRO</b> <sup>4000</sup>	11.80 r / 100m <sup>2</sup>

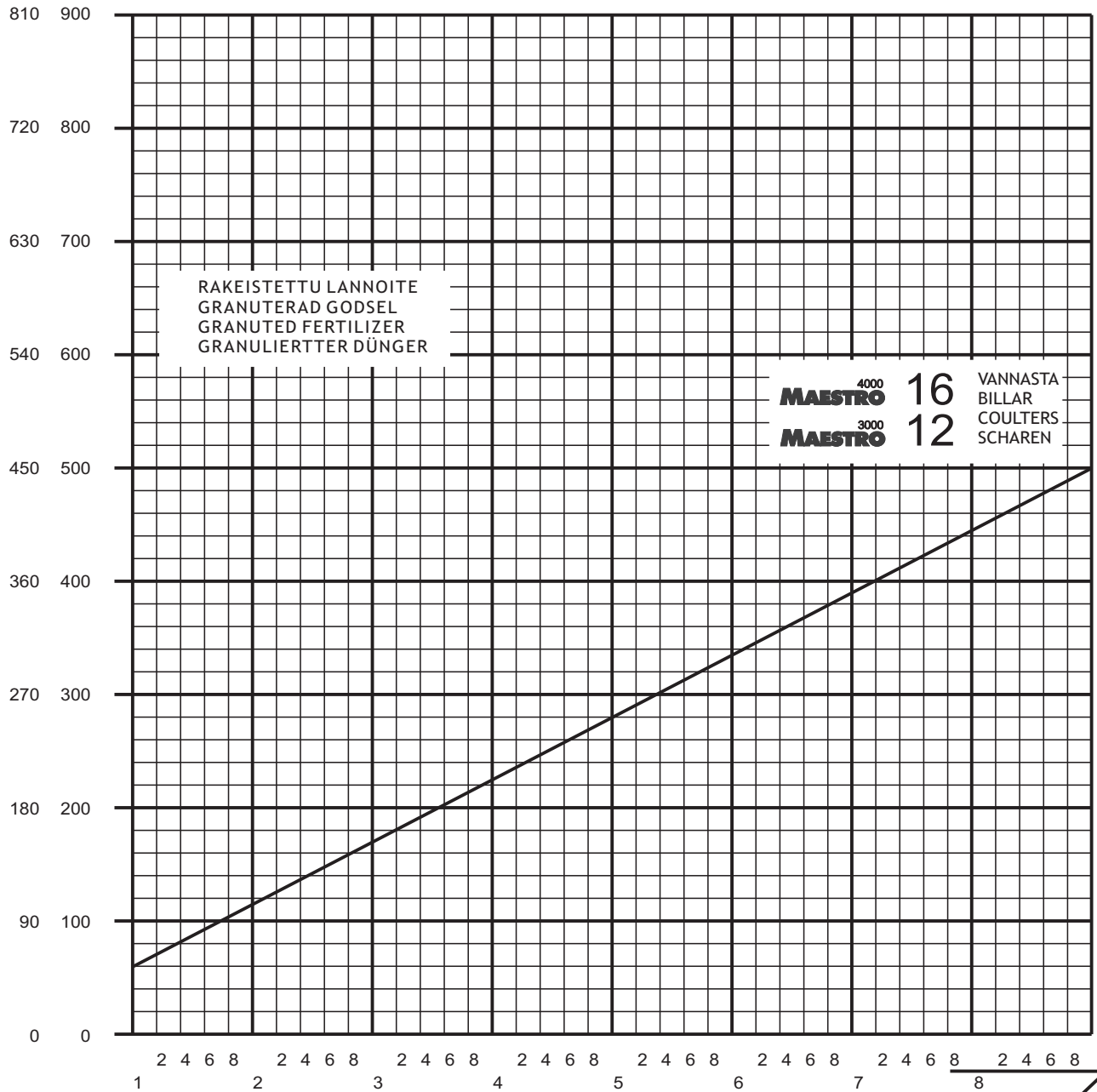
		FASTER RATIO 1:2.8	
Z13		<b>MAESTRO</b> <sup>3000</sup>	25.75 r / 100m <sup>2</sup>
		<b>MAESTRO</b> <sup>4000</sup>	19.30 r / 100m <sup>2</sup>

# 9 CALIBRATION TEST TABLE FOR STANDARD RATIO

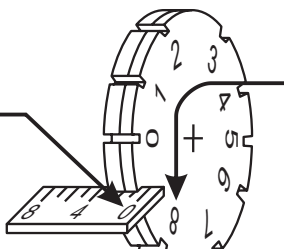
lbs/  
acre

kg/  
ha

## TABLE



PÄÄASTEIKKO  
HUVUDSKALA  
MAIN SCALE  
HAUPTSKALA



YMPYRÄASTEIKKO  
CIRKELSKALA  
CIRCULAR SCALE  
KREISSKALA



**MAESTRO**<sup>3000</sup> 15,75 KIERR. / 100m<sup>2</sup>  
ROTATIONS / 100m<sup>2</sup>  
UMDR. / 100m<sup>2</sup>

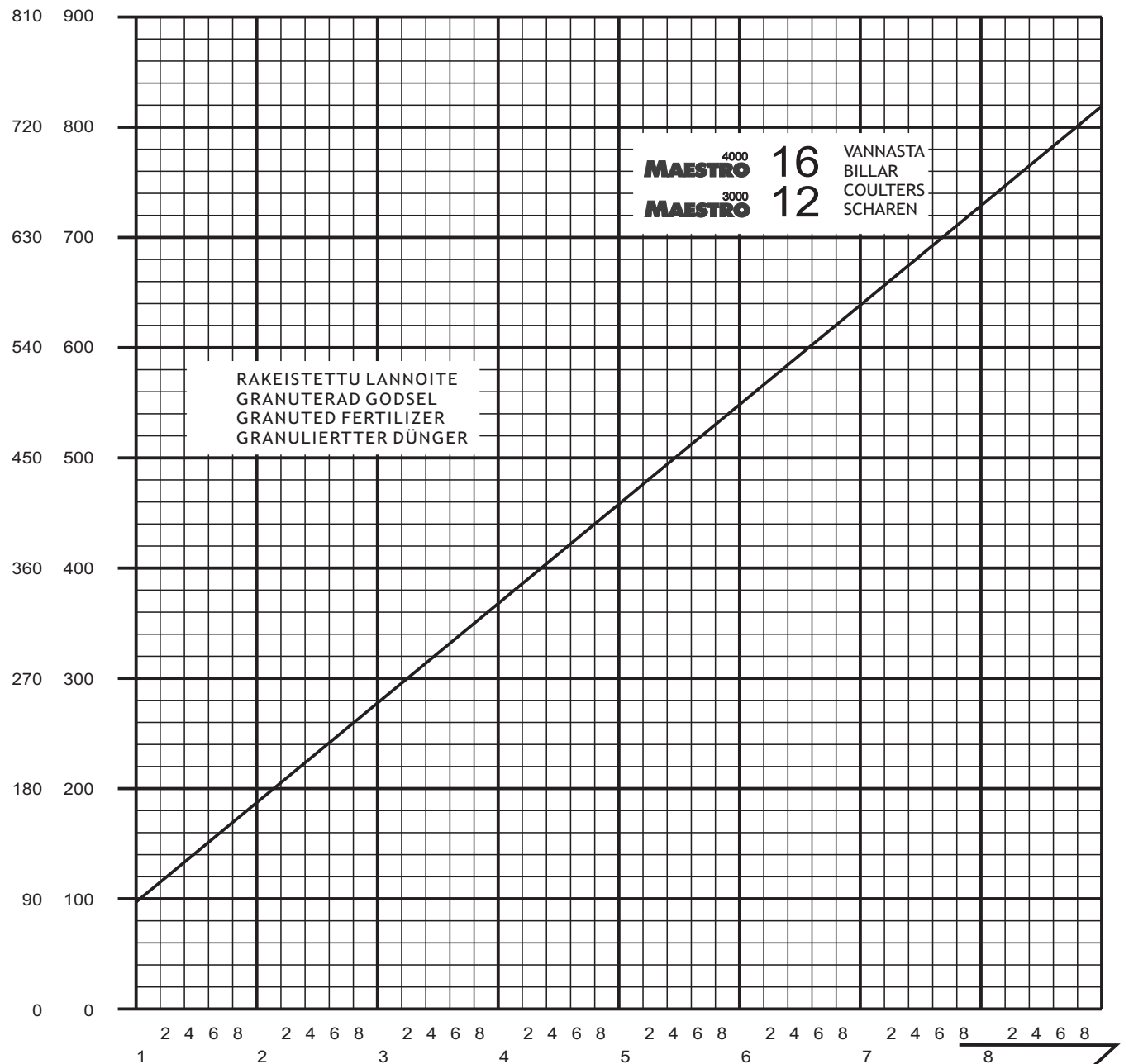
**MAESTRO**<sup>4000</sup> 11.80 KIERR. / 100m<sup>2</sup>  
ROTATIONS / 100m<sup>2</sup>  
UMDR. / 100m<sup>2</sup>



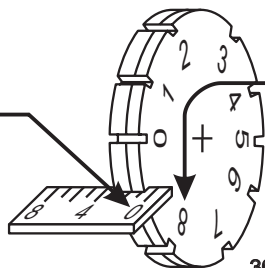
# 10 CALIBRATION TEST TABLE FOR FASTER RATIO

lbs/  
acre    kg/  
ha

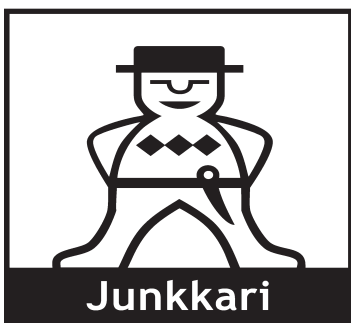
## TABLE



PÄÄASTEIKKO  
HUVUDSKALA  
MAIN SCALE  
HAUPTSKALA



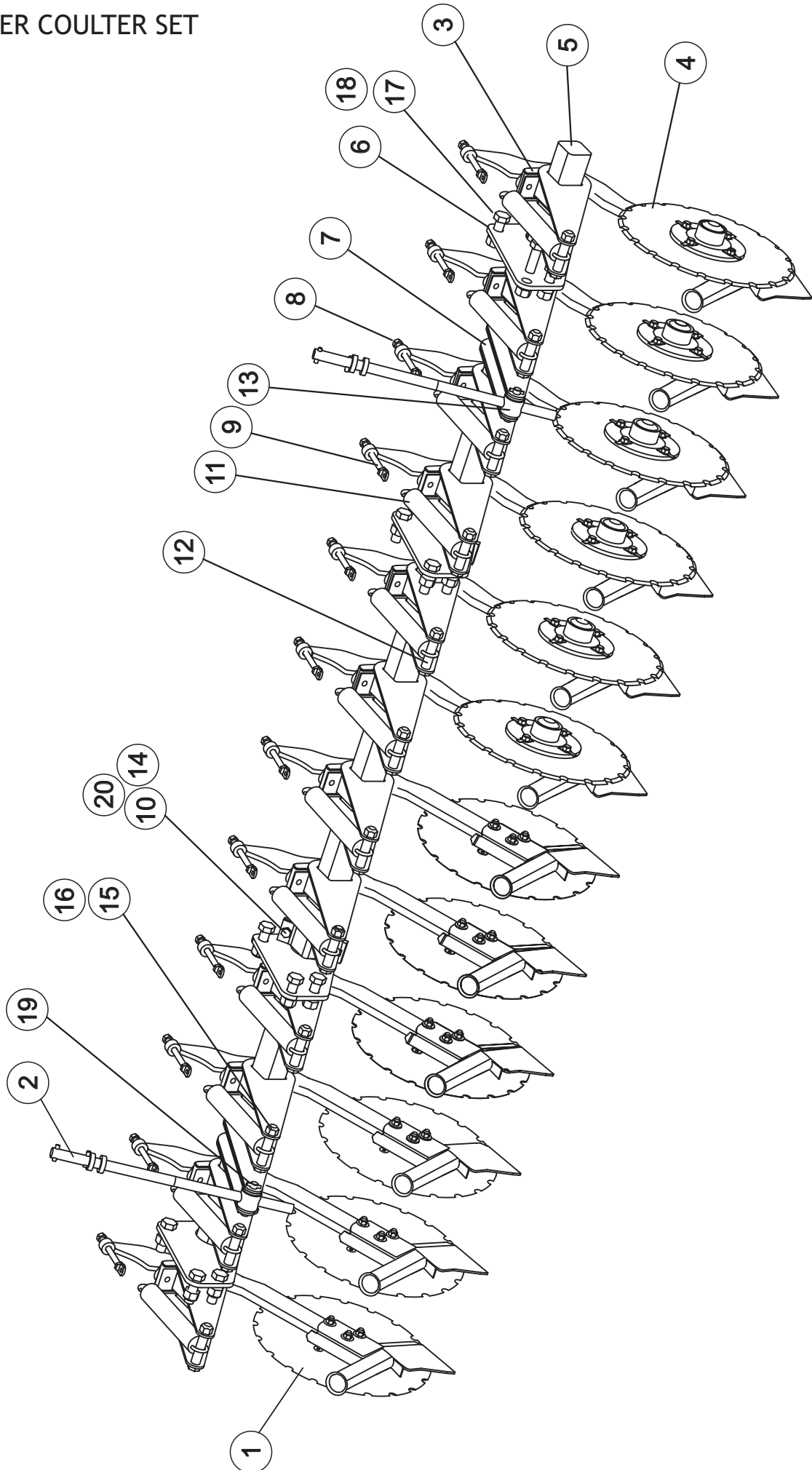
YMPYRÄASTEIKKO  
CIRKELSKALA  
CIRCULAR SCALE  
KREISSKALA



**MAESTRO**<sup>3000</sup> 25,75 KIERR. / 100m<sup>2</sup>  
ROTATIONS / 100m<sup>2</sup>  
UMDR. / 100m<sup>2</sup>

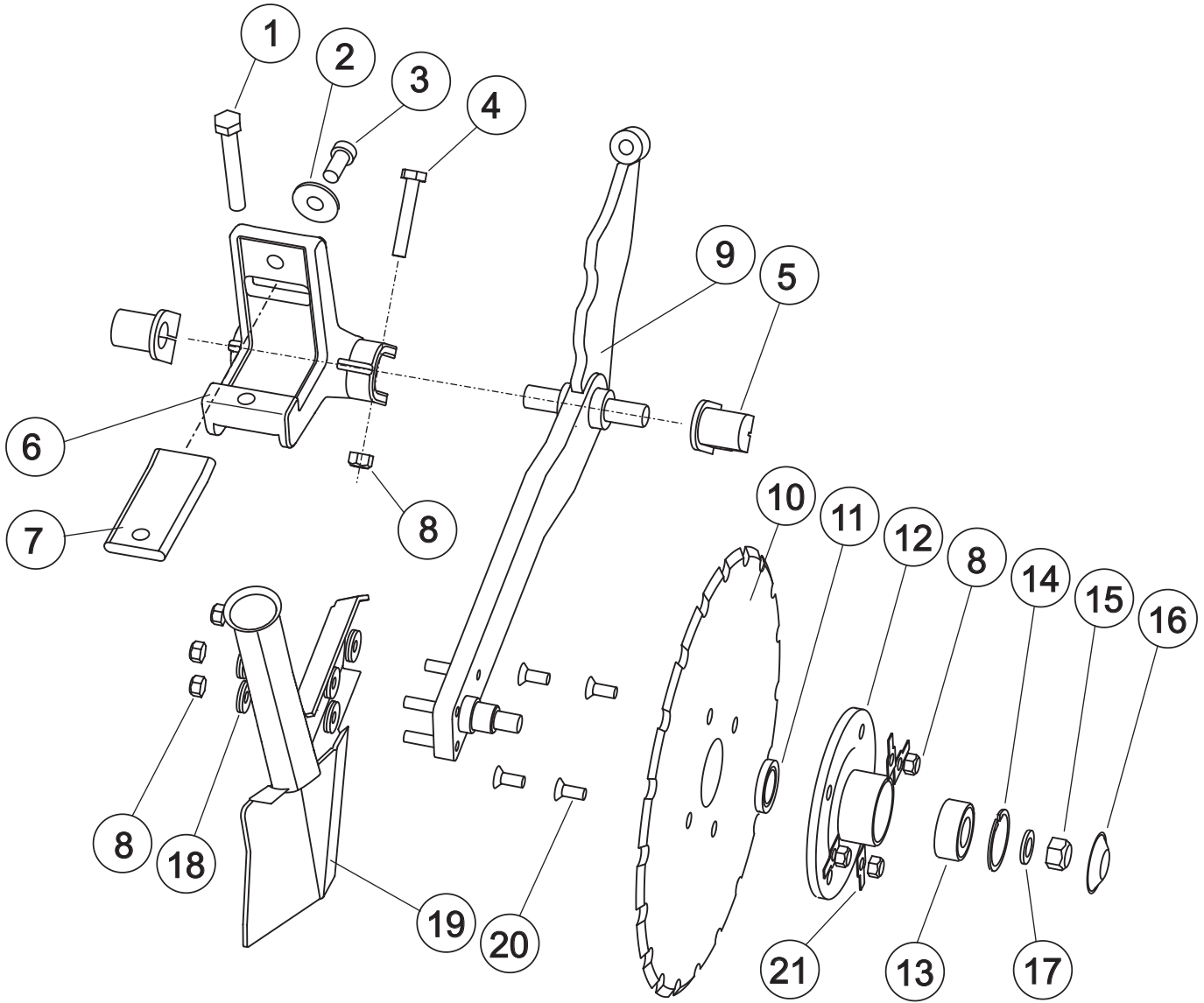
**MAESTRO**<sup>4000</sup> 19,30 KIERR. / 100m<sup>2</sup>  
ROTATIONS / 100m<sup>2</sup>  
UMDR. / 100m<sup>2</sup>

# FERTILIZER COULTER SET



PART	CODE	LABEL	PCS	
			MAESTRO 3000	MAESTRO 4000
1	17644	AUX MANURE COULTER LEFT	6	8
2	17731	ADJUSTMENT BAR ASSEMBLED	2	2
3	17573	COULTER FASTENER ASSEMBLED	12	16
4	17748	AUX MANURE COULTER RIGHT	6	8
5	17284	BEAM TO BODY	1	
	18073	BEAM TO BODY		1
6	17646	BEAM FASTENER	4	4
7	17404	FASTENER BRACKET	32	
8	AGC113014	HEX NUT IL M12 DIN985-8 ZN	12	16
9	17792	TIGHTENING SCREW FOR SPRING	12	16
10	AGC113014	HEX NUT IL M12 DIN985-8 ZN	4	4
11	E34816	DRAW-SPRING TS-150	12	16
12	17499	INTERMEDIATE PIPE	12	16
13	17728	ADJUSTMENT HINGE	2	2
14	17739	AUX MANURE COULTER LOCATOR	4	4
15	A0G3A1524	HEX SCREW M16X100 8.8 DIN933 ZNC	12	16
16	AGG113014	HEX NUT IL M16 DIN985-8 ZN	12	16
17	A0L201524	HEX SCREW M20X60 8.8 DIN933 ZN	12	16
18	AGL113014	HEX NUT IL M20 DIN985-8 ZN	12	16
19	B86120001	SPRING COTTER 6X32 DIN1481 ZNC	4	4
20	A0C0S1512	HEX SCREW M12X25 8.8 DIN933 ZN	4	4
	176600	FERTILIZER COULTERS ASSEMBLED	1	
	183350	FERTILIZER COULTERS ASSEMBLED		1

# FERTILIZER COULTER AND COULTER BRACKET

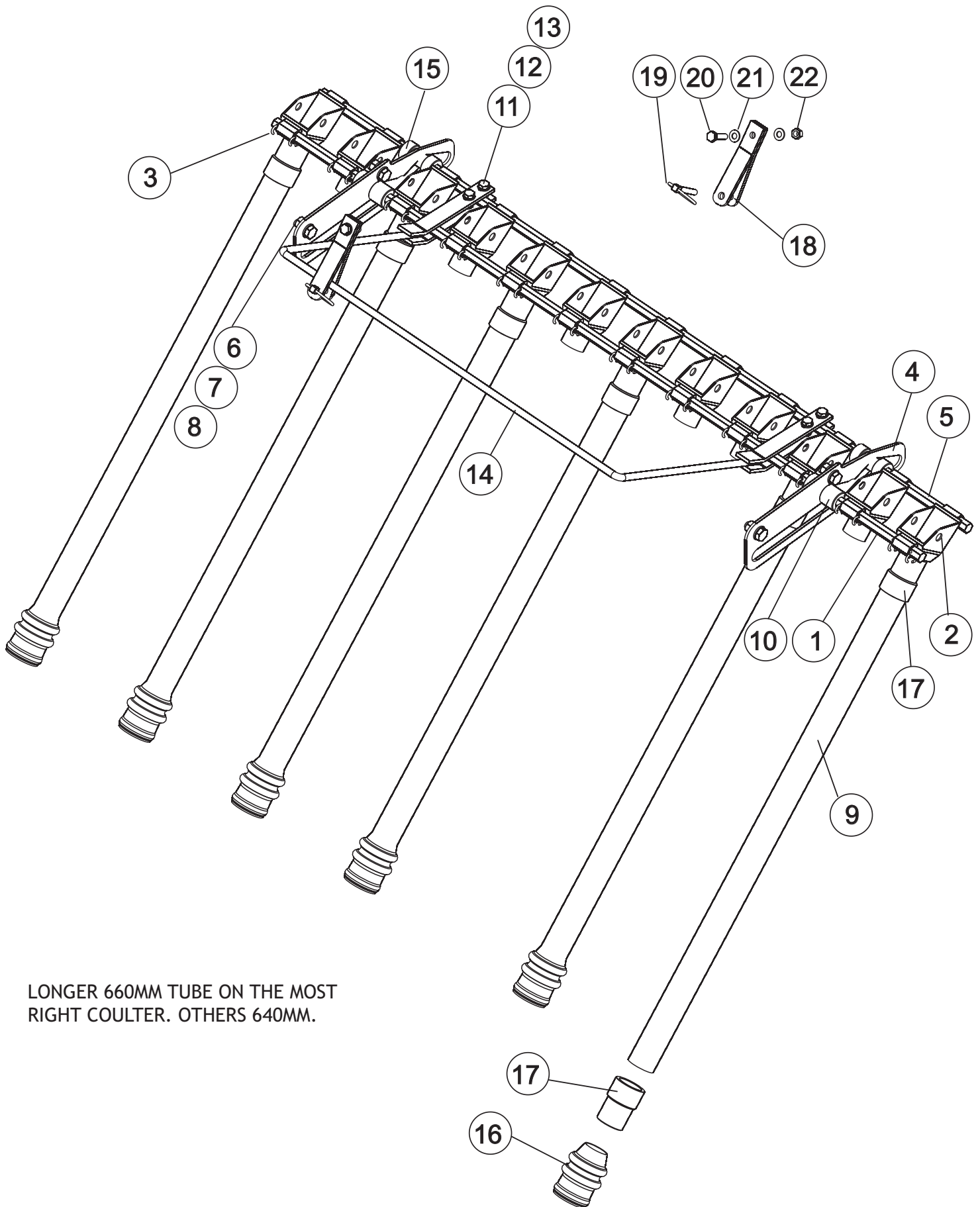


PART	CODE	LABEL	PCS	PCS
			MAESTRO3000	MAESTRO4000
1	A0C2L1514	HEX SCREW M1 2*80	12	16
2	B5C0R2124	BED-PLATE M12	24	32
3	A0C0S4524	HEX SCREW M12*25	24	32
4	A0A201014	HEX SCREW M10*60	24	32
5	17162	PLASTIC BEARING	24	32
6	17118	COULTER BRACKET	12	16
7	17576	FASTENER PLATE	12	16
8	AGA113014	HEX NUT M10 IL	108	144
9	17695	ARM RIGHT	6	8
	17643	ARM LEFT	6	8
10	17249	COULTER DISK	12	16
11	CNA304770	STE FA 30*4 7*7	12	16
12	17256	TERMINAL	12	12
13	CE3205	ANGULAR CONTACT BALL BEARING	12	16
14	BH1N20021	LOCK RING	12	16
15	AGG113014	HEX NUT M16 IL	12	16
16	17385	PROTECTIVE CAP	12	16
17	B61455	BED-PLATE M16	12	16
18	E63881	PLATE SPRING	216	288
19	17742	SCRAPER RIGHT	6	8
	17687	SCRAPER LEFT	6	8
20	A07315	HEX SCREW M10*25	48	64
21	17691	NUT LOCKER	48	64
	17748	COULTER ASSEMBLED RIGHT (9-21)	6	8
	17644	COULTER ASSEMBLED LEFT (9-21)	6	8
	17573	COULTER BRACKET ASSEMBLED (1-8)	12	16

NOTE! PICTURE SHOWS THE RIGHT COULTER.

NOTE THAT THE TIGHTENING NUT M16 OF THE COULTER DISC **15** MUST BE TIGHTENED 150Nm

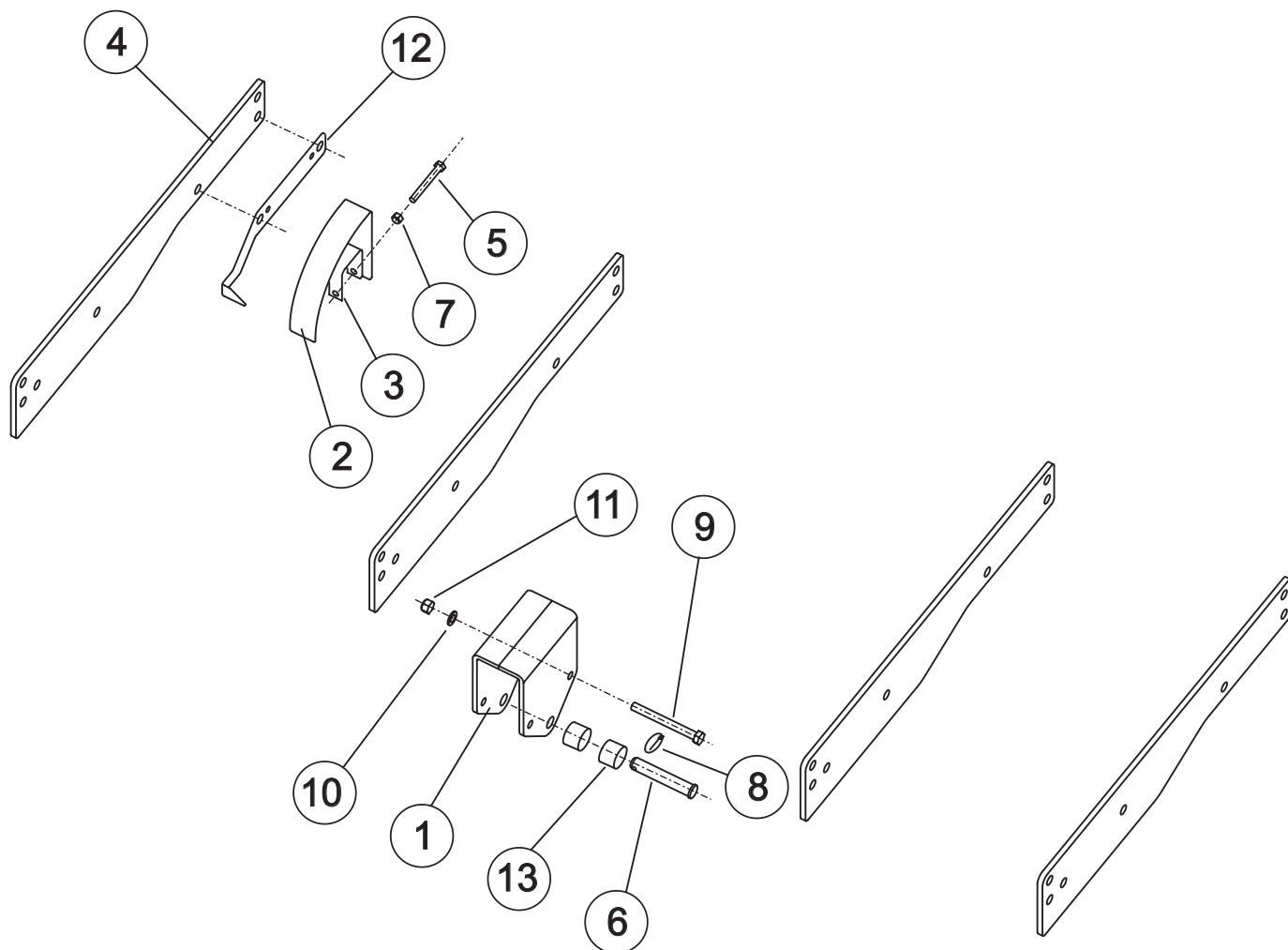
# OUTLETS AND TUBES



LONGER 660MM TUBE ON THE MOST  
RIGHT COULTER. OTHERS 640MM.

PART	CODE	LABEL	PCS	
			MAESTRO3000	MAESTRO4000
1	17701	FERTILIZER SIDE CARRIER AXLE		2
	18184	FERTILIZER SIDE CARRIER AXLE		2
2	D30119	OUTLET	24	32
3	13412	ATTACHMENT WIRE	48	64
4	17719	GROOVE PLATE	4	4
5	18007	FERTILIZER SIDE SUPPORT AXLE	2	
	18186	FERTILIZER SIDE SUPPORT AXLE		2
6	A0A0S1524	HEX SCREW M1 0X25 8.8 DIN933 ZN	8	8
7	B5A0MB024	WASHER M10 DIN125A ZN	16	16
8	AGA113014	HEX NUT IL M10 DIN 985-8 ZN	8	8
9	18573	FEEDING TUBE	11	15
	18106	FEEDING TUBE	1	1
10	17936	SLEEVE	4	4
11	B580H1624	WASHER M 8 DIN1 25A ZN	16	16
12	A081A1514	HEX SCREW M8X20 8.8 DIN 933 ZN	8	8
13	AG8113014	HEX NUT I L M 8 DI N 985-8 ZN	8	8
14	18006	HANDLE	2	
	21033	HANDLE		2
15	17968	SLEEVE WIDE	4	4
16	D18253	SEALING	12	16
17	18084	FITTING	24	32
18	21032	LOCK PLATE	8	8
19	BE8600002	RING PIN	4	4
20	A04910	6-SCREW M8X30 DIN933 AISI	4	4
21	B60649	WASHER M8 DIN125A AISI	8	8
22	A50710	6-NUT M8 IL AISI DIN985	4	4
	17756	OUTLETS ASSEMBLED LEFT 3000	1	
	18337	OUTLETS ASSEMBLED LEFT 4000		1
	21031	OUTLETS ASSEMBLED RIGHT 3000	1	
	21034	OUTLETS ASSEMBLED RIGHT 4000		1

# FASTENING PARTS FOR FRONT LEVELER





PART	CODE	LABEL	PCS	
			MAESTRO3000	MAESTRO4000
1	17906	BRACKET FOR CYLINDER	1	1
2	18115	ARCH	1	1
3	17640	LOCKING PART	1	1
4	17904	SHIM	4	4
5	A0C3A1014	HEX SCREW M 12X100 8.8 DIN931 Z	1	1
6	17655	PIN FOR CYLINDER	1	1
7	AGC113014	HEX NUT IL M12 DIN985-8 ZN	1	1
8	Be6000002	RING COTTER 6X40 L=40 ZN	1	1
9	A0G501514	HEX SCREW M16X150 8.8 DIN931 Z	2	2
10	B5G102524	WASHER M 6 DIN125A ZN	2	2
11	AGG113014	HEX NUT IL M16 DIN985-8 ZN	2	2
12	18059	POINTER	1	1
13	17911	BUSHING	2	2