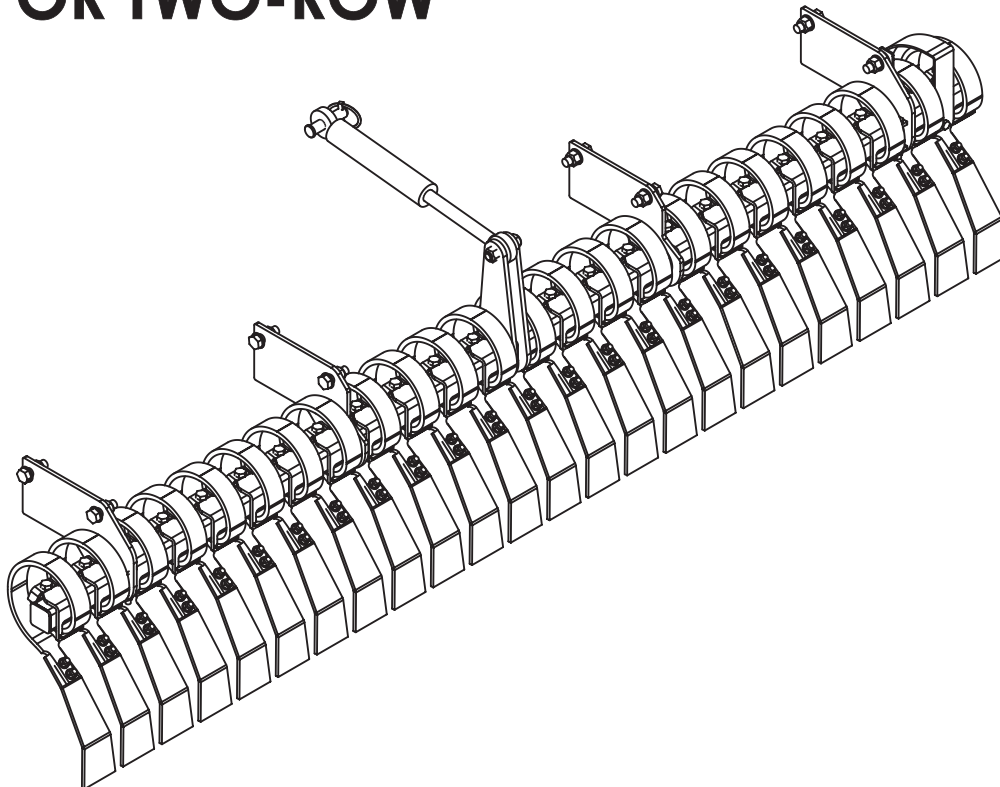


Junkkari

◆◆◆
MAESTRO



**FRONT FIELD DRAG
S SPIKE TILLER
ONE OR TWO-ROW**



**ASSEMBLY AND
SPARE PART MANUAL**

MAETUL08_EN



Junkkari

62375 YLIHÄRMÄ FINLAND
TEL. +358-(0)6-4835111
FAX +358-(0)6-4835295
e-mail: junkkari@msk.fi
Internet: www.junkkari.fi

ENGLISH 

DEAR CUSTOMER

We thank you for your trust and wish you the best success in your work. We ask you to familiarize yourself with this user guide, because complete understanding of the machine, correct adjustments and careful maintenance guarantee user safety and the continued operation of the machine on busy work days.

It is important to understand every section in this guide and to follow the instructions. In unclear cases you should contact the seller of the machine. We hope that after you have read the user guide you will return the signed warranty card to the factory.



Warning!

This user guide is meant as an appendix to the Junkkari Maestro user guide. Sections:

- 4. SAFETY INSTRUCTIONS
- 6.3 USE LIMITATIONS AND PROHIBITED USES
- 8. MACHINE TRANSPORTATION, HANDLING AND STORAGE
- 9.1 PREPARING FOR USE
- 9.5 DISPOSING OF PACKAGING MATERIAL
- 13 MAINTENANCE
- 16 STORAGE
- 17 TROUBLESHOOTING CHART
- 17.1 FAULTS
- 18 REMOVING THE PRODUCT FROM USE
- 19 TERMS OF WARRANTY
- 20 RESPONSIBILITY AREAS

as such pertain also to the front field drags and S spike tillers.

Before installation and use familiarize yourself with the corresponding instructions of the sowing fertilizer.

TECHNICAL SPECIFICATIONS

	FRONT FIELD DRAG1 ROW 3000	FRONT FIELD DRAG1 ROW 4000	FRONT FIELD DRAG2 ROW 3000	FRONT FIELD DRAG2 ROW 4000
PRODUCT NUMBER	175600	182330	176290	182432
FIELD DRAG PCS	24	32	24	32
WEIGHT/kg	215	275	330	410

	S SPIKE TILLER 1 ROW 3000	S SPIKE TILLER 1 ROW 4000	S SPIKE TILLER 2 ROW 3000	S SPIKE TILLER 2 ROW 4000
PRODUCT NUMBER	184450	184550	184500	184560
SPIKES PCS	24	32	24	32
WEIGHT/kg	170	215	285	350

GENERAL

PURPOSE OF USE

The front field drag levels out the seedbed thus forming a crumb structured surface soil optimal for seeding. The one-row model is used in normal circumstances, but for rocky soil we recommend using the two-row version for better penetrability. S spike tillers are one or two-row models and in these the blade of the field drag is replaced with an S spike. In this case, the surface of the soil can be broken and tilled efficiently. The field drag as well as the tiller can be installed in the machine separately or in different combinations.

APPLICATIONS

In connection with other applications, you should consult experts.

FUNCTIONING PRINCIPLE

The devices are attached into the pulling body of the Maestro sowing fertilizer with screws either directly or with the help of fitting pieces. The working depth is adjusted by turning the fastening bars hydraulically. In addition, in the two-row models the angle between the front and back row can be adjusted by changing the length of the push shaft. Also the angle of the body in relation to the pulling body can be changed by moving the middle fastening bolt.

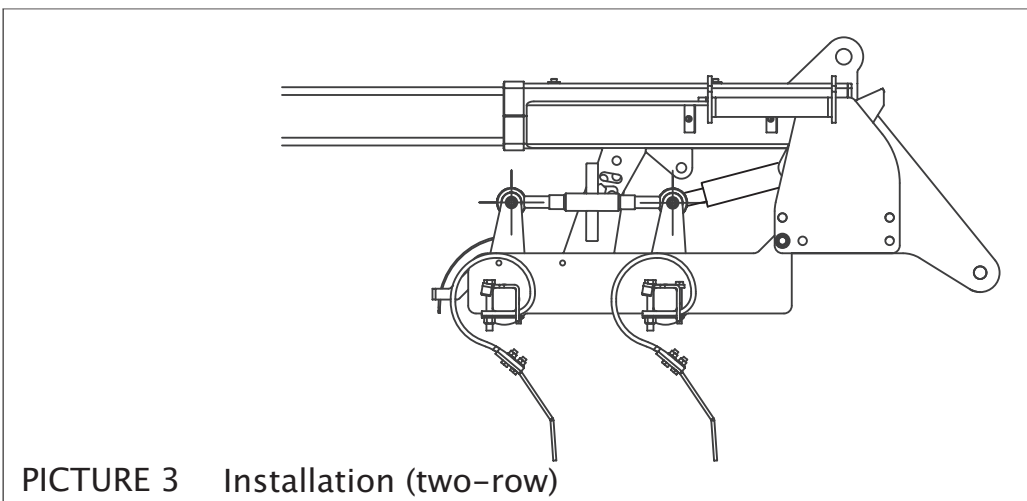
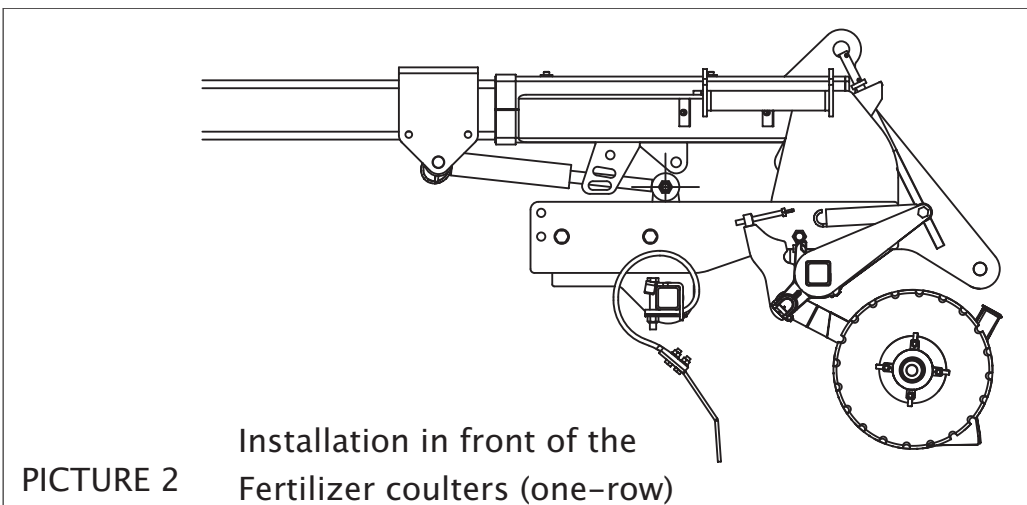
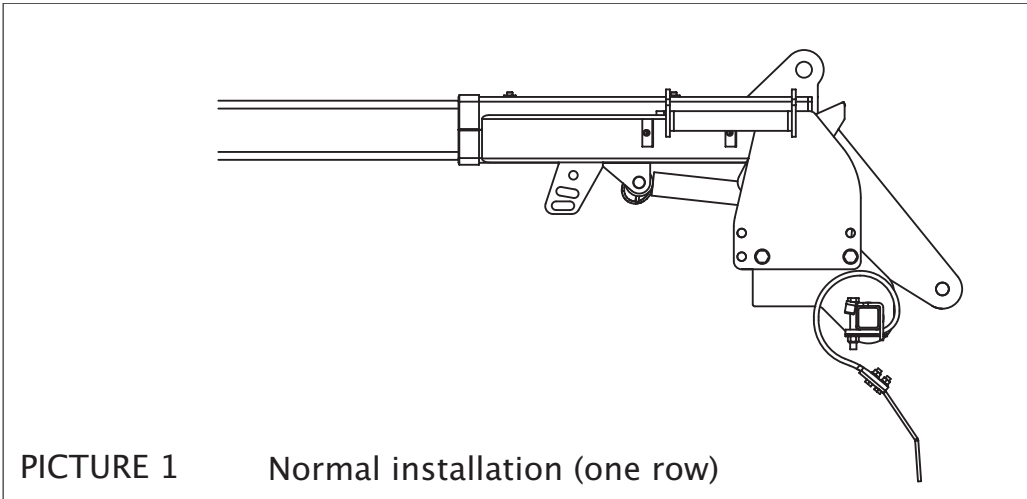
TAKING INTO USE

PACKAGE:

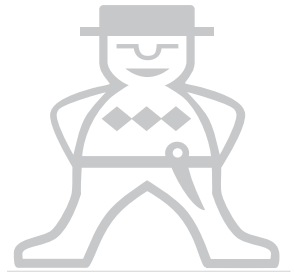
- Device assembled
- Fastening parts
- User guide

ATTACHING TO THE MACHINE

The front field drags and S spike tillers are fastened with screws to the pulling body of the machine. The one-row models are fastened normally directly to the holes on the pulling body (picture 1), but if the machine contains separate fertilizer coulters, this model is fastened with shims (picture 2). In this case, attach a separate cylinder bracket to the shaft tube with screws and the cylinder front end to the bracket. Normally the cylinder is fastened to the brackets under the pulling body. The two-row models are fastened according to picture 3 from behind with four screws and with one from the front. In this case the cylinders are fastened to the brackets in the horizontal beam in the pulling body.



Junkkari



◆◆◆
MAESTRO



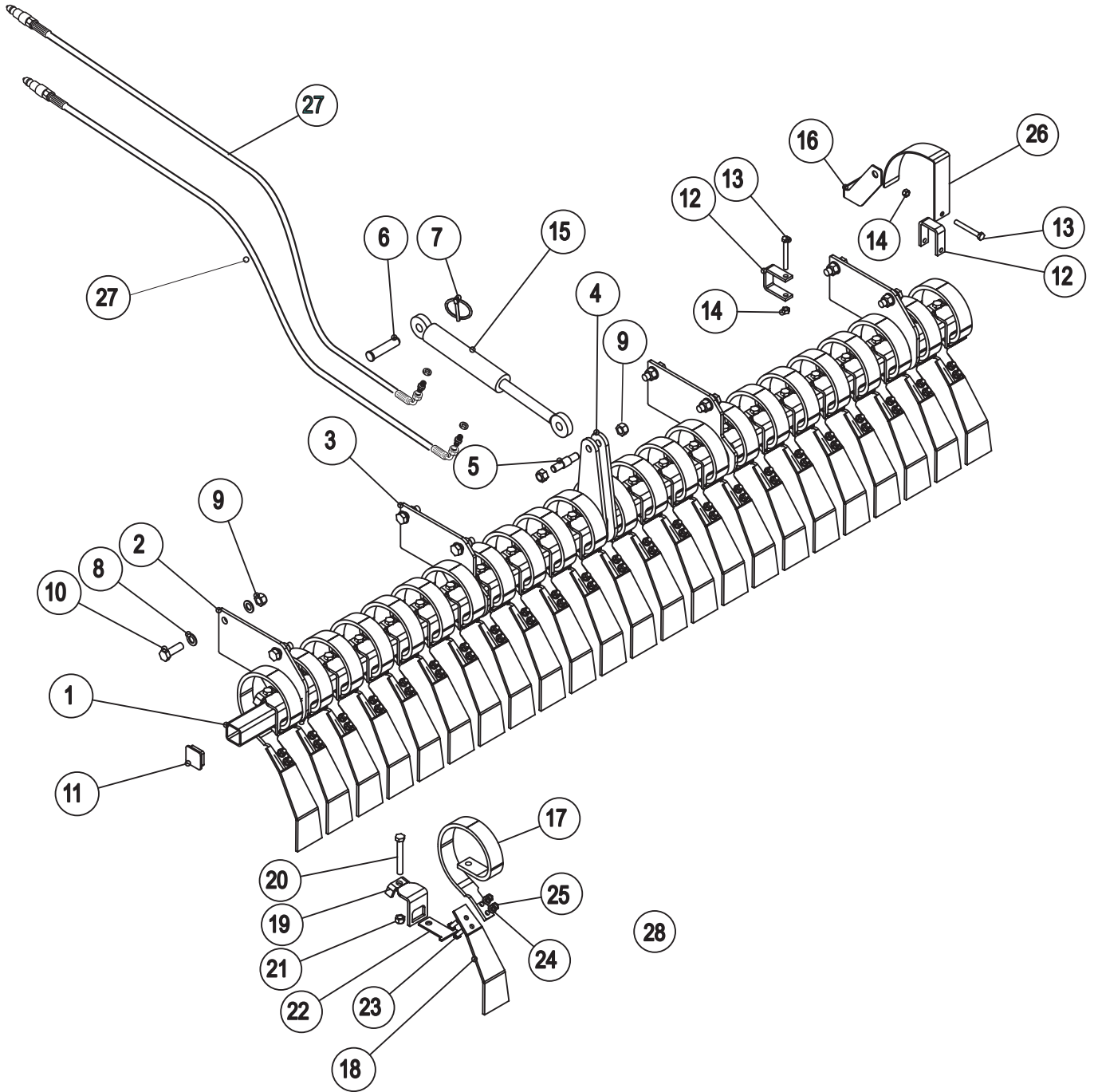
FRONT FIELD DRAG
S SPIKE TILLER
ONE OR TWO-ROWS

MAETUL08_SU

SPARE PART PICTURES

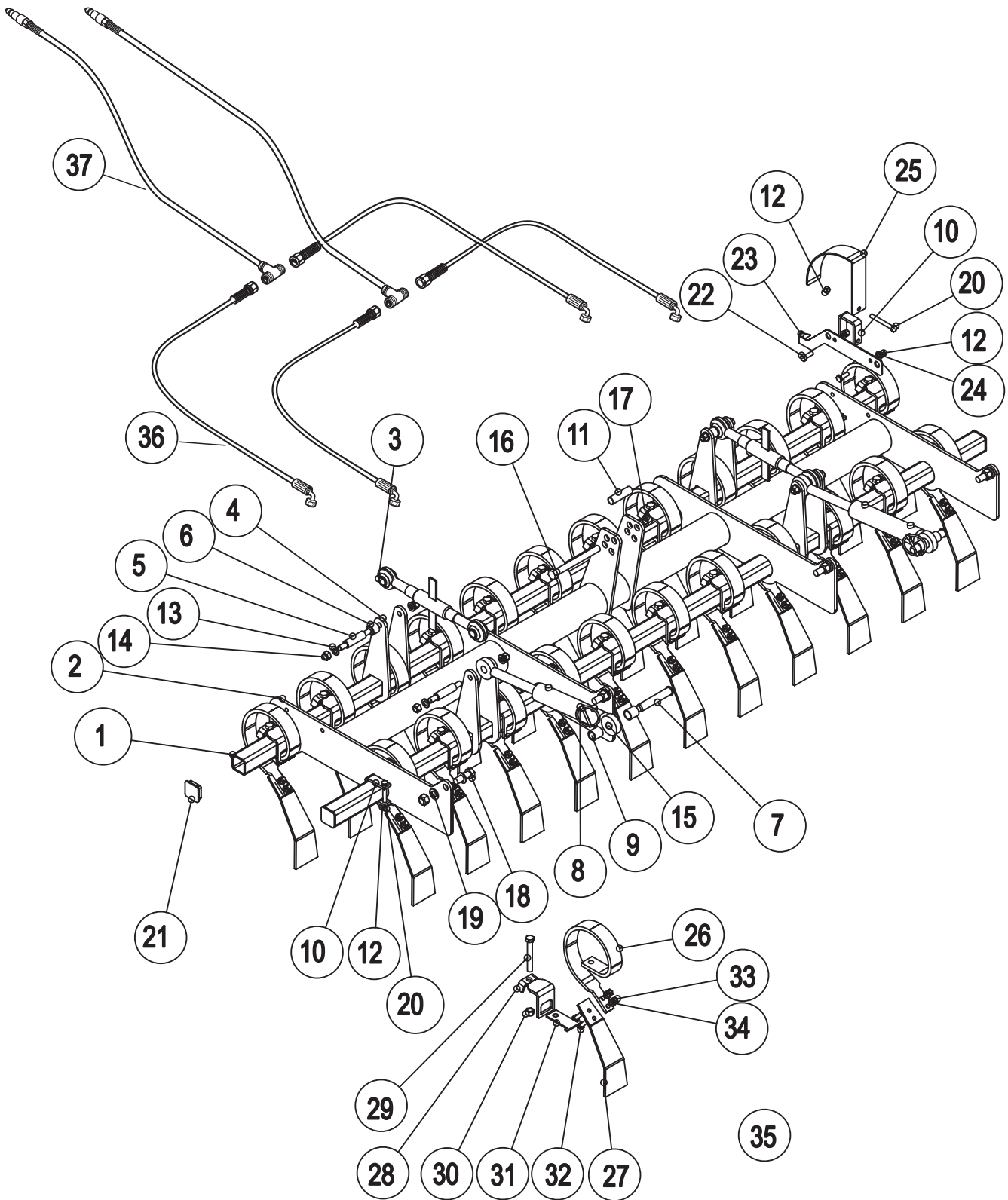
FINLAND C €

FRONT FIELD DRAG 1 ROW



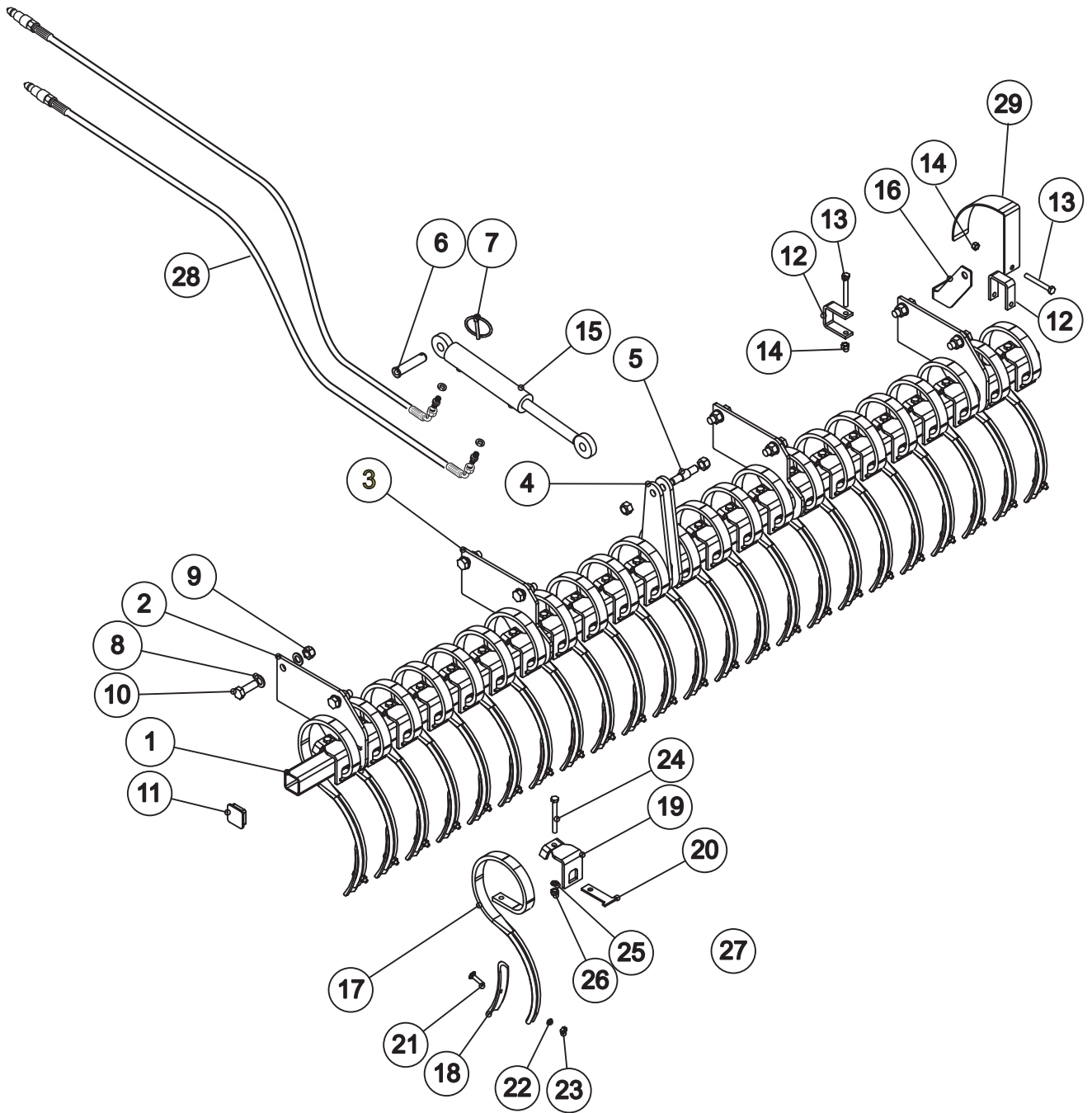
PART	CODE	LABEL	PCS 3000	PCS 4000
1	17284	BEAM TO BODY 3000	1	
	18073	BEAM TO BODY 4000		1
2	17439	FASTENING PLATE TO PULLING DEVICE	2	2
3	17562	FASTENING PLATE TO PULLING DEVICE SERRATED	2	2
4	17518	LEVER ARM	2	2
5	17519	PEG	1	1
6	17757	PEG FOR CYLINDER	1	1
7	Be8600002	RING COTTER 8X45 L= 040 ZN	1	1
8	B5L173024	BED-PLATE M20 DIN1 25A ZN	16	16
9	AGL113014	HEX NUT I L M20 DI N985-8 ZN	10	10
10	A0L201524	HEX SCREW M20X60 8.8 DIN933 ZN	8	8
11	D60605	INNER PLUG 60*60*5	2	2
12	17640	LOCKING PLATE	3	3
13	A0C3A1014	HEX SCREW M1 2X1 00 8.8 DIN931 ZN	3	3
14	AGC113014	HEX NUT IL M1 2 DIN985-8 ZN	3	3
15	D56044	HYDR CYL NTS4-50/30*200-2B25/3/	1	1
16	18111	METER HAND FOR FIELD DRAG	1	1
17	14352	COULTER SPRING RECTANG COULT. B. .M-97	24	32
18	17907	FRONT FIELD DRAG BLADE SHORT	24	32
19	17416	SPRING FASTENER	24	32
20	A0G401514	HEX SCREW M1 6X1 20 8.8 DIN931 ZN	24	32
21	AGG113014	HEX NUT IL M1 6 DIN985-8 ZN	24	32
22	17417	PLATE TO SPRING FASTENER	24	32
23	A0C1A1014	HEX SCREW M12X40 8.8 DIN933 ZN	48	64
24	B5C0R2024	BED-PLATE M 2 DIN1 25A ZN	48	64
25	AGC111014	HEX NUT M1 2 DIN934-8 ZN	48	64
26	18115	ARCH FOR METER HAND	1	1
27	17909	HOSE FOR 1-ROW FIELD DRAG	2	2
28	17681	FIELD DRAG SPIKE ASSEMBLED (PARTS 17-25)	24	32

FRONT FIELD DRAG 2 ROW



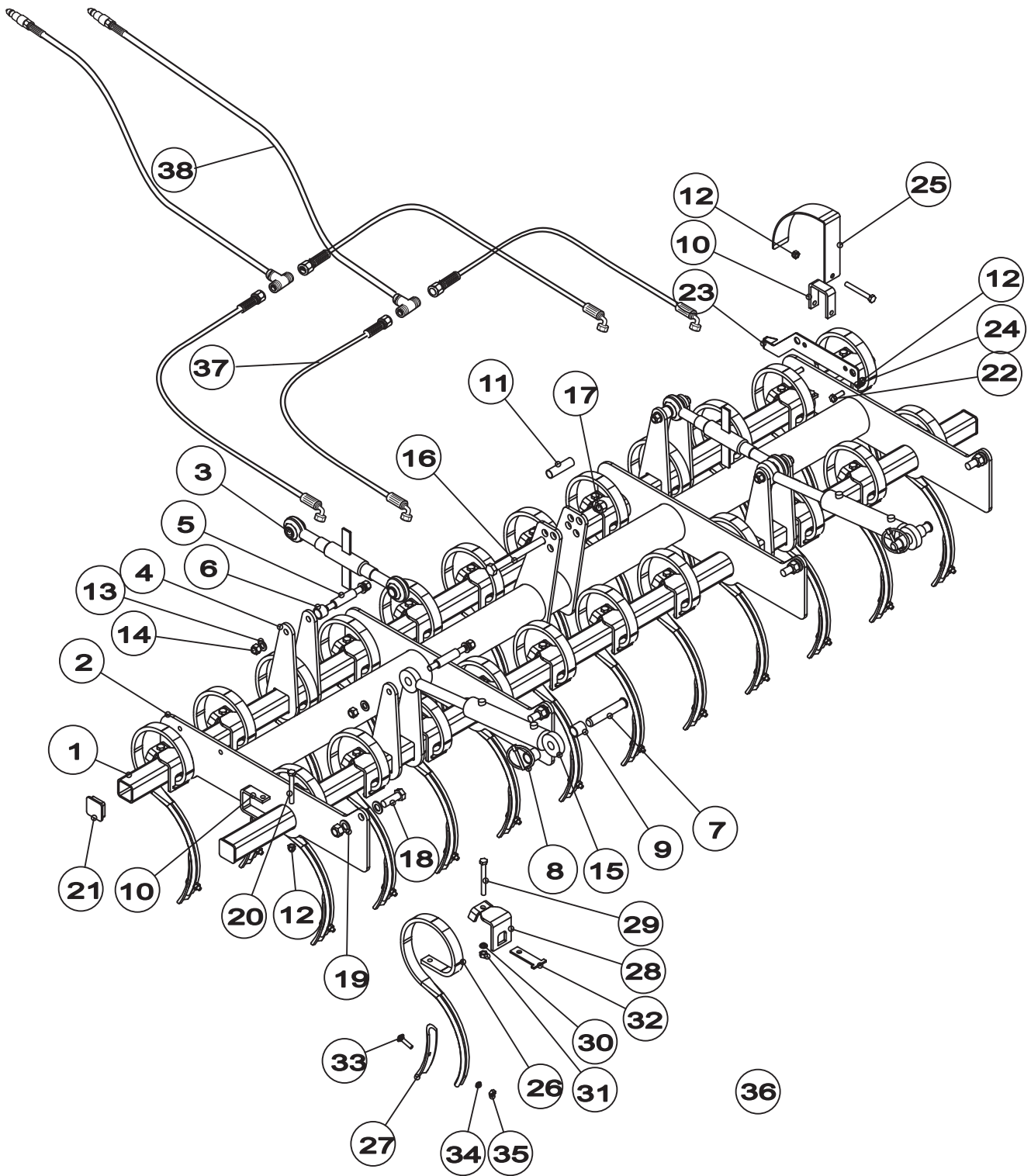
PART CODE	LABEL	PCS 3000	PCS 4000
1	17284	2	
	18073		2
2	17656	1	
	18246		1
3	14893	2	2
4	17633	8	8
5	17638	4	4
6	17639	2	2
7	17655	2	2
8	Be8600002	2	2
9	17911	4	4
10	17640	5	5
11	17657	1	1
12	AGC113014	7	7
13	B5G102524	8	8
14	AGG113014	8	8
15	D56044	2	2
16	A0L6L1514	1	1
17	AGL113014	5	5
18	A13680	4	4
19	B5L173024	8	8
20	A0C3A1014	5	5
21	D60605	4	4
22	A0C151514	2	2
23	18109	1	1
24	B5C0R2024	2	2
25	18115	1	1
26	14352	24	32
27	17907	24	32
28	17416	24	32
29	A0G401514	24	32
30	AGG113014	24	32
31	17417	24	32
32	A0C1A1014	48	64
33	AGC113014	48	64
34	B5C0R2024	48	64
35	17681	24	32
36	D14441	4	4
37	D15312	2	2

S SPIKE TILLER ONE-ROW



PART CODE	LABEL	PCS 3000	PCS 4000
1	17284	1	
	18073		1
2	17439	2	2
3	17562	2	2
4	17518	2	2
5	17519	1	1
6	17757	1	1
7	Be8600002	1	1
8	B5L173024	16	16
9	AGL113014	10	10
10	A0L201524	8	8
11	D60605	2	2
12	17640	2	2
13	A0C3A1014	3	3
14	AGC113014	3	3
15	D56044	1	1
16	18111	1	1
17	D30000480	24	32
18	D30000520		24
32			
19	18425	24	32
20	18426	24	32
21	A0A1AG511	24	32
22	B5A0H2214	24	32
23	AGA111014	24	32
24	A0C3L1514	24	32
25	B5C0M2514	24	32
26	AGC111014	24	32
27	18427	24	32
28	17909	2	2
29	18115	1	1

S SPIKE TILLER TWO-ROW



PART CODE	LABEL	PCS 3000	PCS 4000
1	17284	2	
	18073		2
2	17656	1	
	18246		1
3	14893	2	2
4	17633	8	8
5	17638	4	4
6	17639	2	2
7	17655	2	2
8	Be8600002	2	2
9	17911	4	4
10	17640	5	5
11	17657	1	1
12	AGC113014	7	7
13	B5G102524	8	8
14	AGG113014	8	8
15	D56044	2	2
16	A0L6L1514	1	1
17	AGL113014	5	5
18	A13680	4	4
19	B5L173024	8	8
20	A0C3A1014	4	5
21	D60605	4	4
22	A0C151514	2	2
23	18109	1	1
24	B5C0R2024	2	2
25	18115	1	1
26	D30000480	24	32
27	D30000520	24	32
28	18425	24	32
29	18426	24	32
30	A0A1AG511	24	32
31	B5A0H2214	24	32
32	AGA111014	24	32
33	A0C3L1514	24	32
34	B5C0M2514	24	32
35	AGC111014	24	32
36	18427	24	32
37	D14441	4	4
38	D15312	2	2