

# Junkkari

**MAESTRO** *Plus*  
3000  
4000

◆◆◆ Junkkari

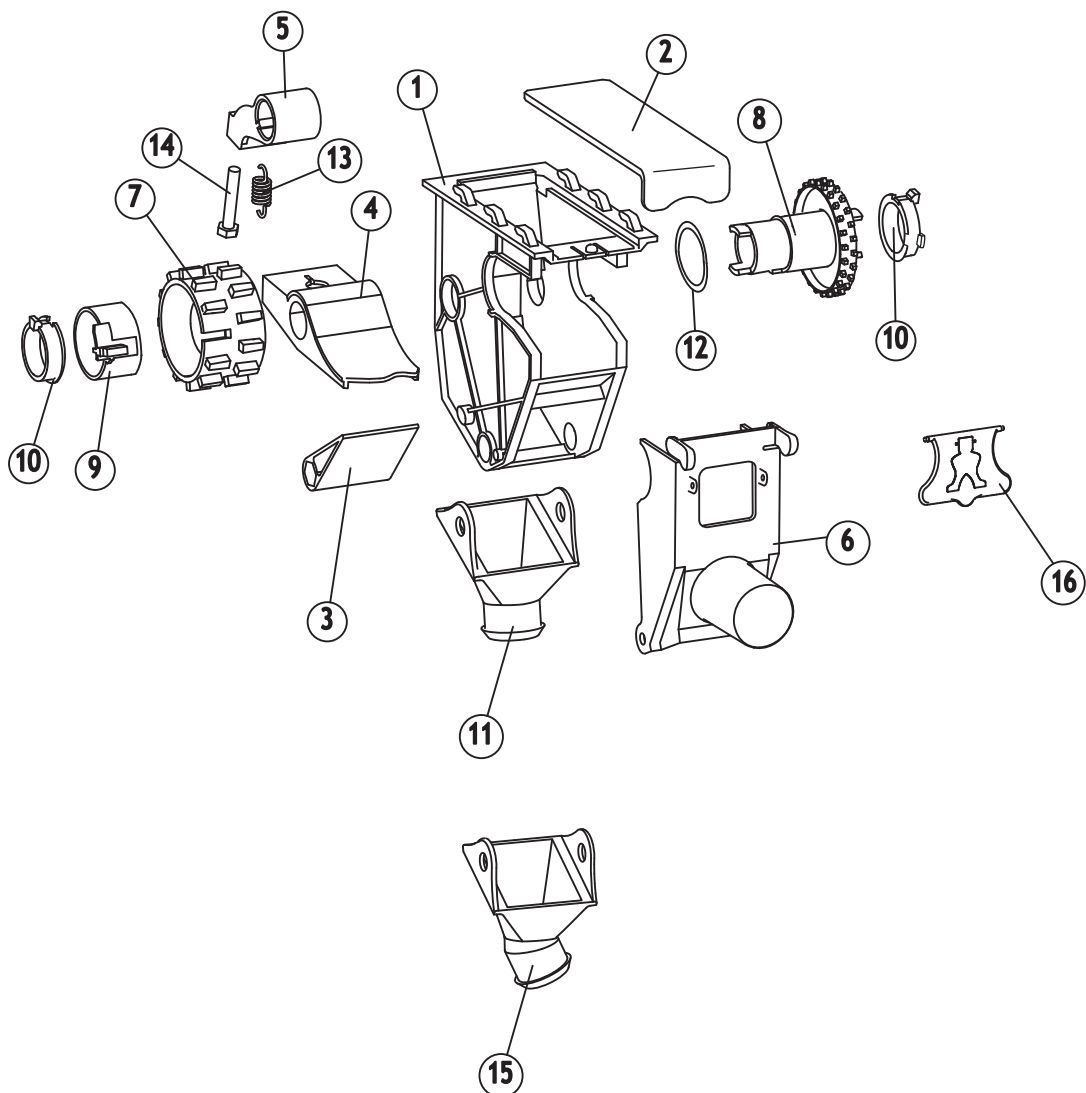
## SPARE PARTS

MA10\_EN\_B

Junkkari Oy  
62375 YLIHÄRMÄ FINLAND  
TEL. +358-(0)10 480 2200  
FAX +358-(0)10 480 2295  
e-mail: [junkkari@msk.fi](mailto:junkkari@msk.fi)  
Internet: [www.junkkari.fi](http://www.junkkari.fi)

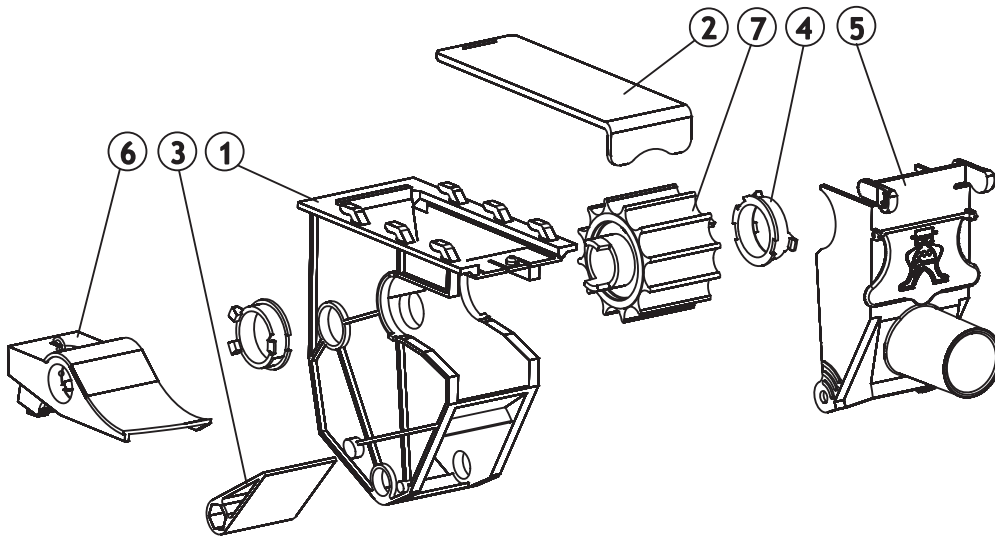
ENGLISH 

# SEED FEED HOUSING



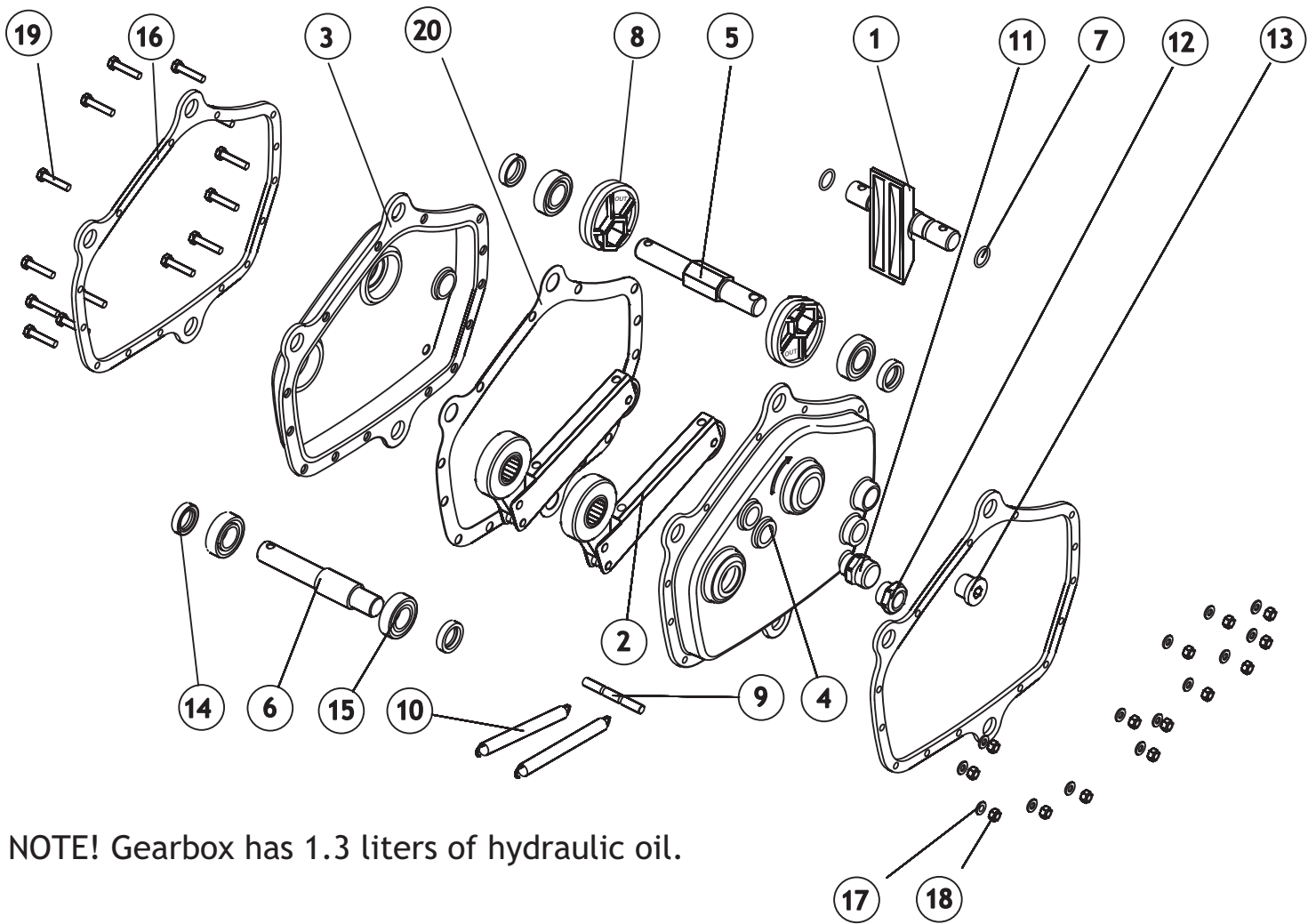
| PART | CODEI     | NAME                                  | PCS<br>3000 | PCS<br>4000 |
|------|-----------|---------------------------------------|-------------|-------------|
| 1    | 17101     | FEED HOUSING                          | 24          | 32          |
| 2    | 17102     | LID                                   | 24          | 32          |
| 3    | 17103     | SMALL FLAP                            | 24          | 32          |
| 4    | 17104     | BOTTOM FLAP                           | 24          | 32          |
| 5    | 17105     | BOTTOM FLAPS BUCHING                  | 24          | 32          |
| 6    | 17106     | COVER                                 | 24          | 32          |
| 7    | 17107     | PRIMARY FEED ROLLER                   | 24          | 32          |
| 8    | 17108     | SECONDARY FEED ROLLER                 | 20          | 28          |
| 9    | 17109     | JOINT PART                            | 24          | 32          |
| 10   | 17110     | BEARING                               | 48          | 64          |
| 11   | 17111     | OUTLET                                | 17          | 22          |
| 12   | 17490     | SPRING WASHER                         | 24          | 32          |
| 13   | 17144     | BOTTOM FLAP SPRING                    | 24          | 32          |
| 14   | A06151514 | 6-SCREW M6X35 8.8 DIN 933 ZN          | 24          | 32          |
| 15   | 18095     | OUTLET ANGLED                         | 7           | 10          |
| 16   | 18821     | SMALL COVER                           | 24          | 32          |
|      | 17580     | FEED HOUSING ASSEMBLED, NORMAL OUTLET | 19          | 25          |
|      | 18317     | FEED HOUSING ASSEMBLED ANGLED OUTLET  | 5           | 7           |

# FERTILIZER FEED HOUSING



| PART | CODE  | NAME  | PCS<br>3000 | PCS<br>4000 |
|------|-------|---|-------------|-------------|
| 1    | 17101 | FEED HOUSING                                  | 24          | 32          |
| 2    | 17102 | LID   | 24          | 32          |
| 3    | 17103 | SMALL FLAP                                    | 24          | 32          |
| 4    | 17110 | BEARING                                       | 48          | 64          |
| 5    | 20792 | SYÖTTÖLAITTEEN LUUKKU KOOTTU                  | 24          | 32          |
| 6    | 21249 | FERTILIZER FEED HOUSING BOTTOM FLAP ASSEMBLED | 24          | 32          |
| 7    | 18518 | FEEDING ROLLER                                | 24          | 32          |
|      | 20247 | FEED HOUSING ASSEMBLED (1-7)                  | 24          | 32          |

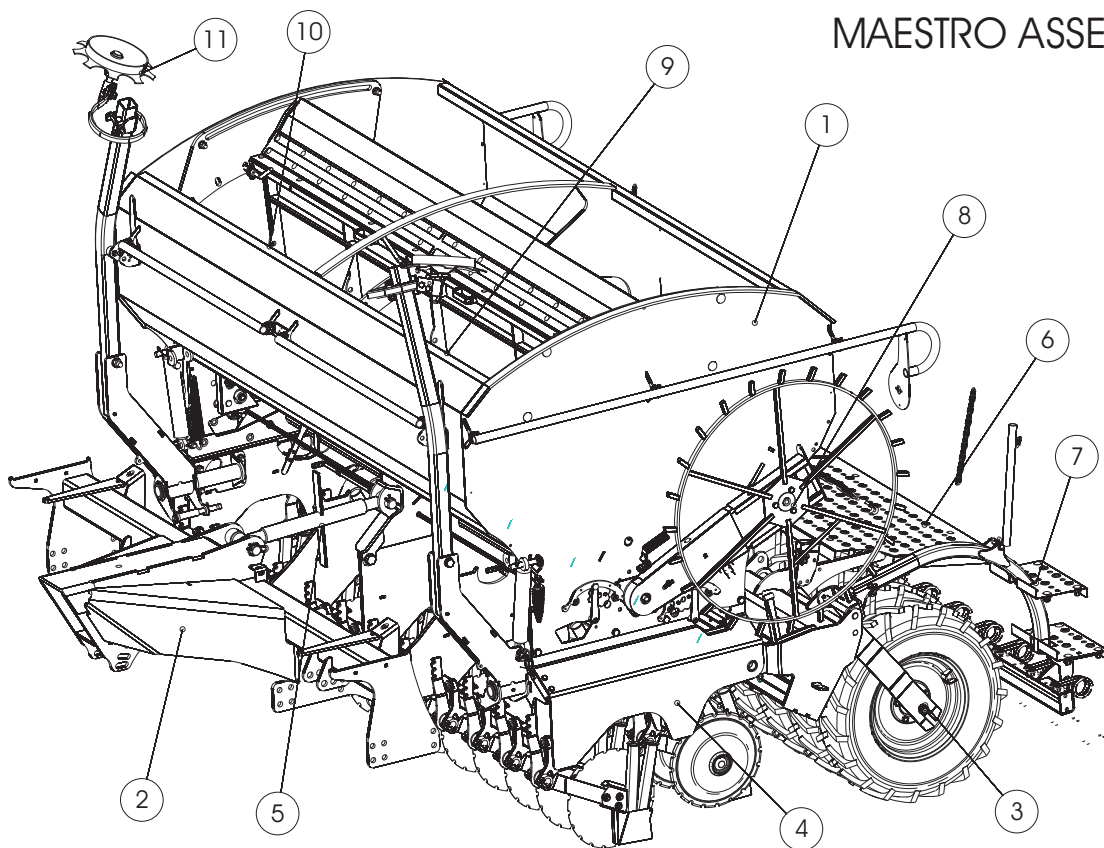
## MECHANISM OF GEARBOX



NOTE! Gearbox has 1.3 liters of hydraulic oil.

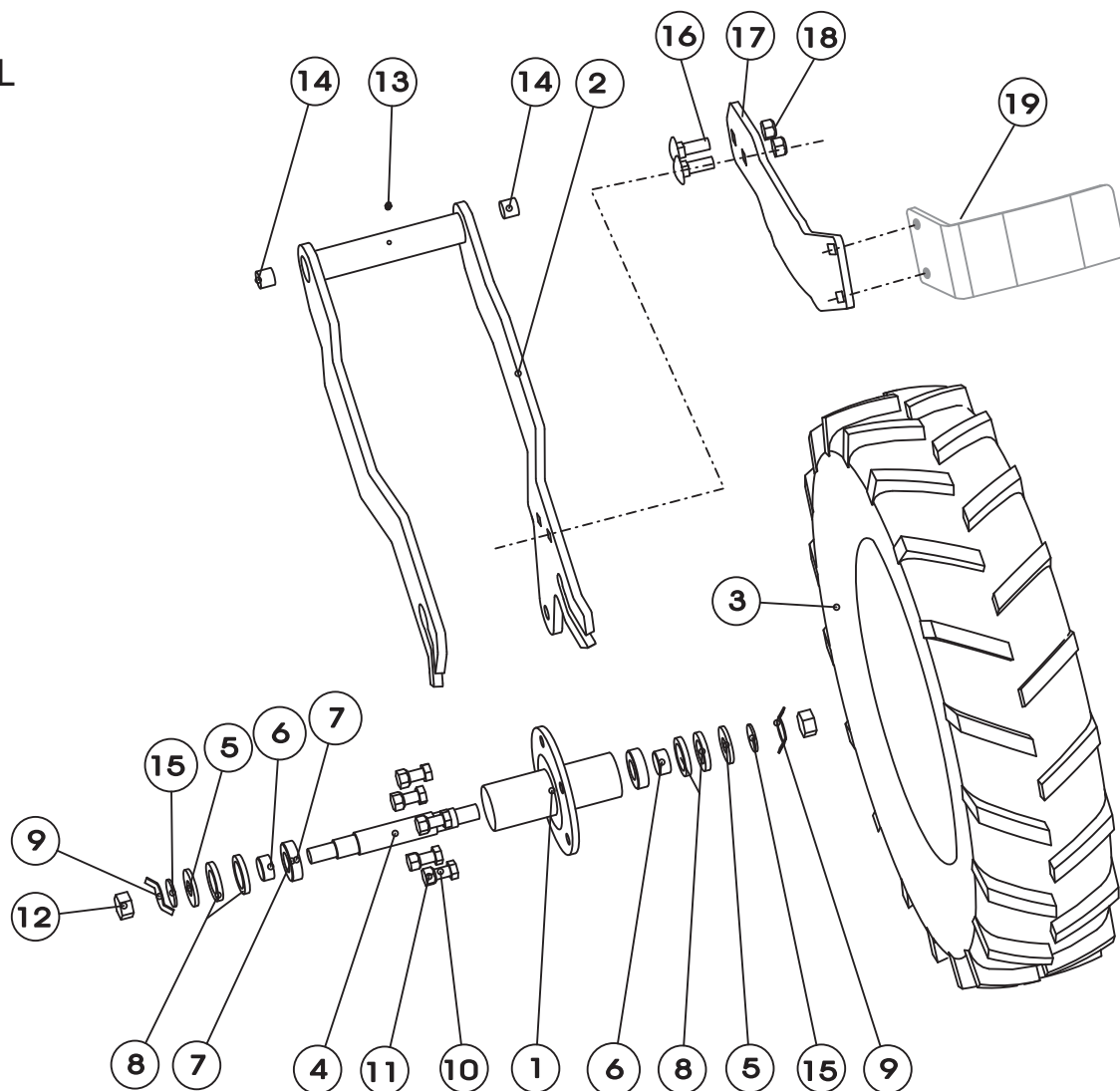
| PART | CODEI     | NAME                         | PCS<br>3000/4000 |
|------|-----------|------------------------------|------------------|
| 1    | 18645     | AXEL                         | 1                |
| 2    | 18628     | LEVER ASSY                   | 2                |
| 3    | 18647     | BACK COVER                   | 1                |
| 4    | 18648     | FRONT COVER                  | 1                |
| 5    | 18613     | SHAFT                        | 1                |
| 6    | 18614     | OUTPUT SHAFT                 | 1                |
| 7    | D163240   | SEALING 16.3X2.4             | 2                |
| 8    | 18627     | PLASTIC RING                 | 2                |
| 9    | 18629     | PIN                          | 1                |
| 10   | 18626     | SPRING                       | 2                |
| 11   | D123000   | CAP 1/2"                     | 1                |
| 12   | DG120TLA  | GLASS 1/2"                   | 1                |
| 13   | D43201    | PLUG E336 1/2                | 1                |
| 14   | CNA20307  | SEALING 20X30X7              | 4                |
| 15   | CE6004000 | BEARING 6004                 | 4                |
| 16   | 21212     | PRESS RING                   | 2                |
| 17   | B560E1524 | WASHER M 6 Din125A Zn        | 14               |
| 18   | AG6113014 | 6-NUT Il M 6 Din985-8 Zn     | 14               |
| 19   | A06101014 | 6-SCREW M6X30 8.8 Din 933 Zn | 14               |
| 20   | 21225     | SEALING                      | 1                |
|      | 18649     | GEARBOX ASSEMBLED            | 2                |

# MAESTRO ASSEMBLY



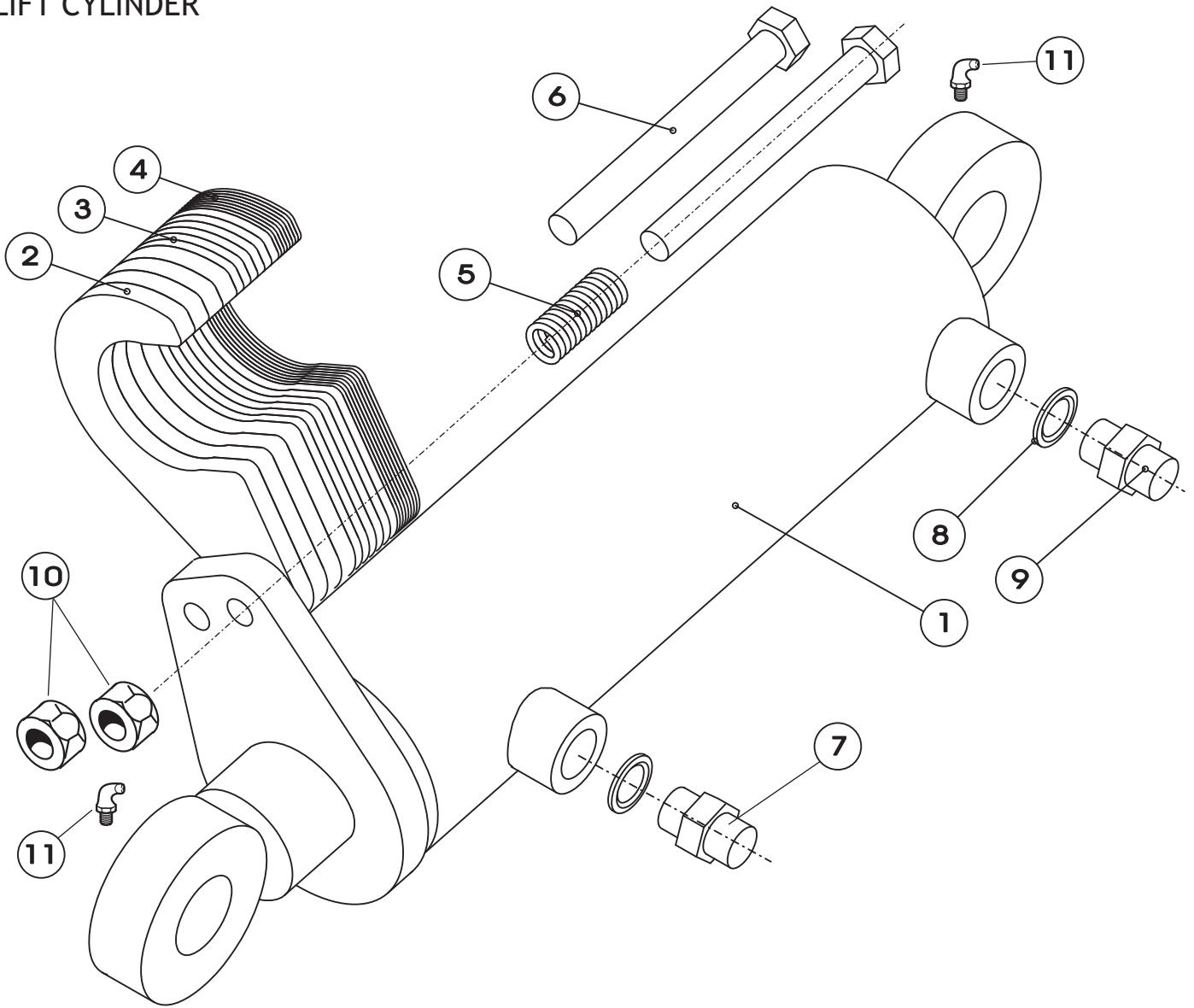
| PART | CODE  | NAME               | PCS/M3000 | PCS/M4000 |
|------|-------|--------------------|-----------|-----------|
| 1    | 20831 | HOPPER             | 1         |           |
|      | 20865 | HOPPER             |           | 1         |
| 2    | 20760 | DRAWBAR FRAME      | 1         |           |
|      | 20818 | DRAWBAR FRAME      |           | 1         |
| 3    | 17520 | PACKER WHEELS      | 1         |           |
|      | 18132 | PACKER WHEELS      |           | 1         |
| 4    | 18015 | FRAME ASSY         | 1         |           |
|      | 18160 | FRAME ASSY         |           | 1         |
| 5    | 17664 | TOP LINK           | 1         | 1         |
| 6    | 20734 | PLATFORM ASSY      | 2         |           |
|      | 20892 | PLATFORM ASSY      |           | 2         |
| 7    | 17485 | FOLLOWING HARROW   | 1         |           |
|      | 18152 | FOLLOWING HARROW   |           | 1         |
| 8    | 17298 | LAND WHEEL         | 1         |           |
| 9    | 20896 | SIEVE 3M LEFT      | 1         |           |
|      | 20899 | SIEVE 4M LEFT      |           | 1         |
| 10   | 20897 | SIEVE 3M RIGHT     | 1         |           |
|      | 20898 | SIEVE 3M RIGHT     |           | 1         |
| 11   | 21070 | TRACK MARKERS 3000 | 1         |           |
|      | 21071 | TRACK MARKERS 4000 |           | 1         |

# SUPPORT WHEEL



| PART | CODE      | NAME                                 | PCS         |             |
|------|-----------|--------------------------------------|-------------|-------------|
|      |           |                                      | MAESTRO3000 | MAESTRO4000 |
| 1    | 17230     | WHEEL HUB                            | 1           | 1           |
| 2    | 17242     | WHEEL FORK LEFT                      | 1/MACHINE   | 1/MACHINE   |
|      | 17240     | WHEEL FORK CENTER                    | 10/MACHINE  | 14/MACHINE  |
|      | 17241     | WHEEL FORK RIGHT                     | 1/MACHINE   | 1/MACHINE   |
| 3    | D18355    | WHEEL ASSEMBLED MAESTRO              | 12/MACHINE  | 16/MACHINE  |
| 4    | 17225     | SHAFT                                | 1           | 1           |
| 5    | 17232     | BUSHING                              | 2           | 2           |
| 6    | 17233     | BUSHING                              | 2           | 2           |
| 7    | CE6205000 | BALL BEARING 6205                    | 2           | 2           |
| 8    | CNA304771 | DIN_3760-A32x52x7                    | 4           | 4           |
| 9    | 17522     | LOCKING PLATE                        | 2           | 2           |
| 10   | AOE151514 | 6-SCREW M14X35 8.8 DIN933 ZN         | 5           | 5           |
| 11   | AGE113014 | 6-NUT IL M14 DIN 985 ZN              | 5           | 5           |
| 12   | A51900    | 6-NUT M20X1.5 DIN934-8 ZN            | 2           | 2           |
| 13   | BJ6150400 | GREASE NIPPLE M6*1/suora N 504       | 1           | 1           |
| 14   | CV0202320 | DRYMET 20/23/20                      | 2           | 2           |
| 15   | B5L173024 | WASHER M20 DIN125A ZN                | 2           | 2           |
| 16   | AOC151014 | LOCK SCREW M12*35                    | 2           | 2           |
| 17   | 17429     | SCRAPER BRACKET                      | 12/MACHINE  | 16/MACHINE  |
| 18   | AGC113014 | HEX NUT M12 IL                       | 2           | 2           |
| 19   | 17432     | REAR TYRE SCRAPER ASSEMBLED (OPTION) | 12          | 16          |
|      | 17361     | WHEEL LEFT ASSEMBLED                 | 1           | 1           |
|      | 17371     | WHEEL CENTER ASSEMBLED               | 10          | 14          |
|      | 17370     | WHEEL RIGHT ASSEMBLED                | 1           | 1           |

# LIFT CYLINDER



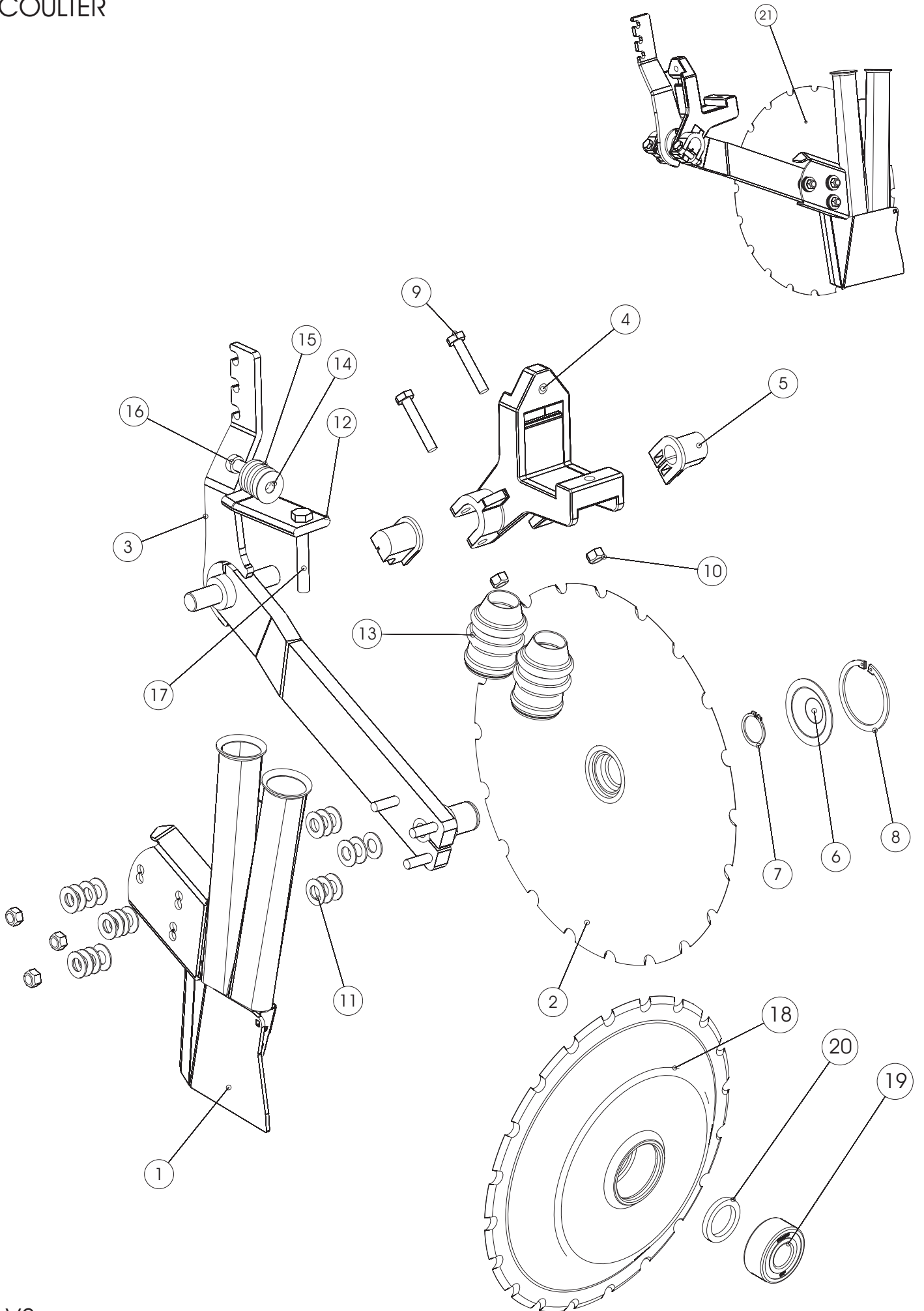
| PART | CODE      | NAME                              | PCS         |             |
|------|-----------|-----------------------------------|-------------|-------------|
|      |           |                                   | MAESTRO3000 | MAESTRO4000 |
| 1    | 17366     | CYLINDER WELDED                   | 1           | 1           |
| 2    | 17410     | LAMEL PLATE 10MM                  | 5           | 5           |
| 3    | 17411     | LAMEL PLATE 5MM                   | 6           | 6           |
| 4    | 17412     | LAMEL PLATE 2MM                   | 8           | 8           |
| 5    | E46204    | COMPRESSION SPRING 75*23,6*3,6 H  | 1           | 1           |
| 6    | A13320    | 6-SCREW M16X170 8.8 DIN931ZN      | 2           | 2           |
| 7    | D30000380 | DOUBLE NIPPLE 201-8 R1/2-R1/2     | 1           | 1           |
| 8    | D30000212 | USIT SEAL 1/2"                    | 2           | 2           |
| 9    |           | CHOKE NIPPLE 201-8 R1/2-R1/2 / Ø3 | 1           | 1           |
| 10   | AGG113014 | HEX NUT M16 IL                    | 2           | 2           |
| 11   | Bj6157600 | GREASE NIPPLE 6*1 / 90°           | 2           | 2           |
|      | 17867     | CYLINDER ASSEMBLED (1-11)         | 1           | 1           |





| PART | CODE      | NAME                              | PCS         |             |
|------|-----------|-----------------------------------|-------------|-------------|
|      |           |                                   | MAESTRO3000 | MAESTRO4000 |
| 1    | 18038     | GROUND WHEEL ARM                  | 1           | 1           |
| 2    | 18046     | GROUN WHEEL BOTTOM PART           | 1           | 1           |
| 3    | 17294     | GROUN WHEEL WELDED                | 1           | 1           |
| 4    | 17295     | AXLE                              | 1           | 1           |
| 5    | 17128     | SPROCKET Z22 AND Z36              | 1           | 1           |
| 6    | 17278     | BUSHING                           | 1           | 1           |
| 7    | 17398     | GROUND WHEEL BRACKET              | 1           | 1           |
| 8    | 18047     | COVER UPPER                       | 1           | 1           |
| 9    | 18044     | COWER LOWER WELDED                | 1           | 1           |
| 10   | CE1020160 | FREEWHEEL STIEBER CSK25           | 1           | 1           |
| 11   | BH1N20021 | LOCK RING REI 52X2 DIN472         | 2           | 2           |
| 12   | B5COR2024 | WASHER M12 DIN125A ZN             | 5           | 5           |
| 13   | B5G102524 | WASHER M16 DIN125A ZN             | 1           | 1           |
| 14   | AGG111084 | 6-NUT M16 ANTI-CLOCKWISE          | 1           | 1           |
| 15   | 17131     | SPOCKET Z13                       | 1           | 1           |
| 16   | BD3011404 | ROLL PIN 4MM DIN11024 ZN          | 1           | 1           |
| 17   | 17400     | DYMET                             | 2           | 2           |
| 18   | 17090     | SHAFT                             | 1           | 1           |
| 19   | CE3205    | BEARING 3205A 2 RS                | 1           | 1           |
| 20   | A11630    | 6-SCREW M12X200 8.8 DIN933ZNC     | 1           | 1           |
| 21   | 18121     | CHAIN ½*136 ROLL                  | 1           | 1           |
| 22   | B560B1614 | SRING WASHER M 6 DIN127B ZN       | 1           | 1           |
| 23   | A060A1514 | 6-SCREW M6X10 8.8 DIN 933 ZN      | 1           | 1           |
| 24   | BH0L12014 | LOCK RING 20X1.2 DIN471           | 1           | 1           |
| 25   | 17577     | KEY 6*6*60                        | 1           | 1           |
| 26   | AGC111014 | 6-NUT M12 DIN934-8 ZN             | 6           | 6           |
| 27   | AGC113014 | 6-NUT IL M12 DIN985-8 ZN          | 3           | 3           |
| 28   | AOC101512 | 6-SCREW M12X30 8.8 DIN933ZNC      | 3           | 3           |
| 29   | AOC1L1514 | 6-SCREW M12X50 8.8 DIN931ZN       | 2           | 2           |
| 30   | E47725    | COMPRESSION SPRING 4394-7725 AISI | 1           | 1           |
| 31   | AOC0S1512 | DIN_EN_24017-M12x25               | 3           | 3           |
| 32   | D14711600 | SPRING 5*40*250 4-7116S           | 1           | 1           |
| 33   | 17723     | CHAIN                             | 1           | 1           |
| 34   | B88160001 | ROLL PIN 8X36 DIN1481 ZNC         | 1           | 1           |
| 35   | BH0S10S14 | LOCK RING 25X1.2 DIN471           | 1           | 1           |
| 36   | 18523     | LEVER ASSEMBLED M14               | 1           | 1           |
| 37   | 17740     | LIFT CHAIN WELDED                 | 1           | 1           |
| 38   | BC3000002 | SCREW SHACKLE M8 ZN               | 1           | 1           |
| 39   | 707510    | TENSION SCREW                     | 1           | 1           |
| 40   | A080L1514 | 6-SCREW M8X20 8.8 DIN 933 ZN      | 1           | 1           |
| 41   | B8C140001 | ROLL PIN 12X40 DIN1481 ZNC        | 1           | 1           |
| 42   | 17844     | LEVER                             | 1           | 1           |
| 43   | CE62052RS | BALL BEARING 6205 2 RS            | 2           | 2           |
| 44   | 17890     | ROLL GRIP                         | 1           | 1           |
| 45   | D30093    | HANDLE                            | 1           | 1           |
| 46   | 137660    | CALIBR. TEST CRANK 3-12634        | 1           | 1           |
| 47   | A01560    | KNURLED-HEAD SCREW                | 1           | 1           |
| 48   | D41542000 | RUBBER BRACKET                    | 1           | 1           |
| 49   | BH80H1929 | BALL JOINT                        | 2           | 2           |
| 50   | 18503     | THREAD BAR                        | 1           | 1           |
| 51   | AGE111014 | 6-MUTTERI M14                     | 1           | 1           |

# COULTER

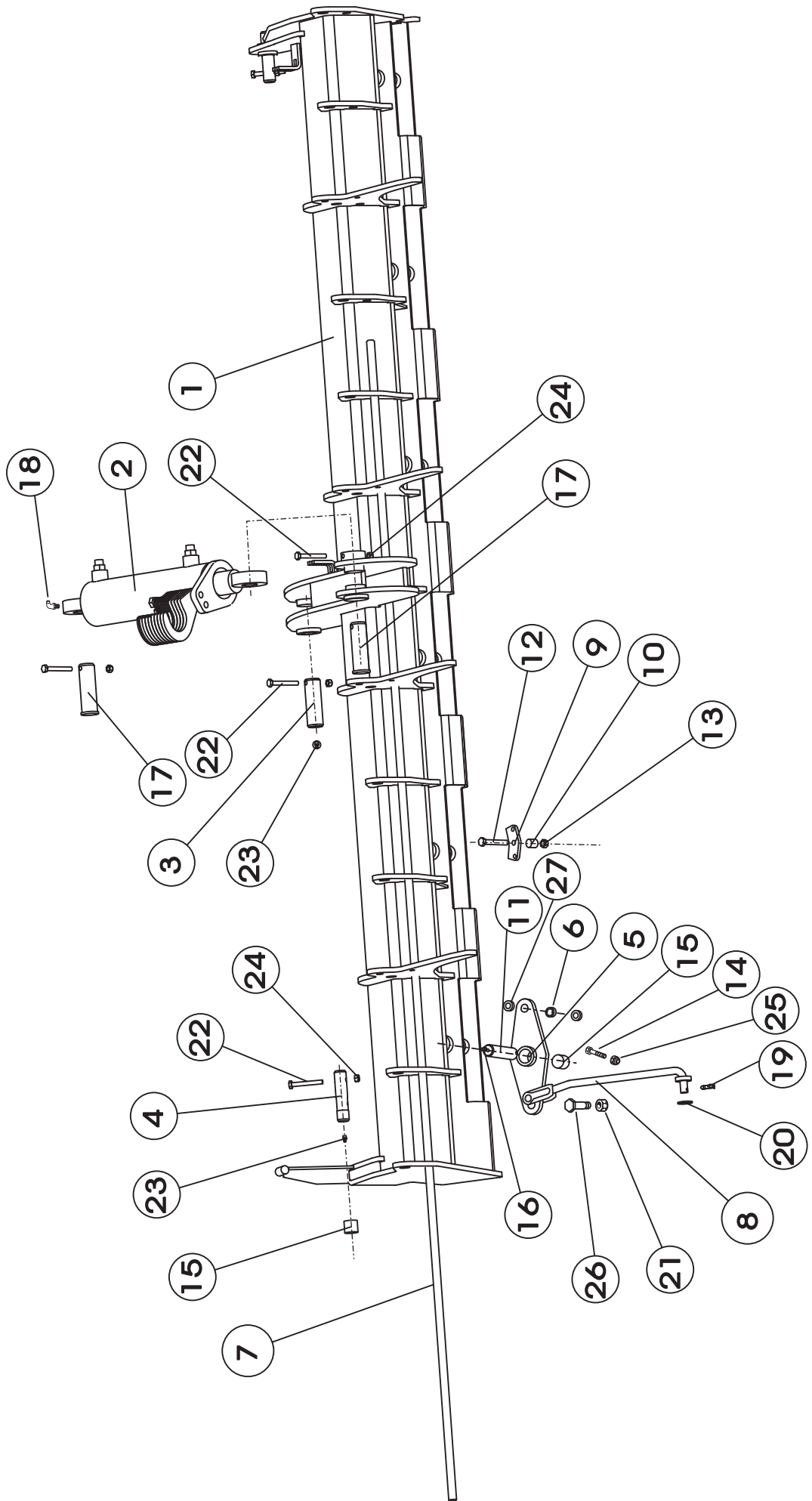


| PART | CODE         | NAME                       | FRONT | REAR |
|------|--------------|----------------------------|-------|------|
|      |              |                            | PCS   | PCS  |
| 1    | 17523        | SIDE PLATE FRONT           | 1     |      |
|      | 17541        | SIDE PLATE REAR            |       | 1    |
| 2    | 20670        | DISC ASSY                  | 1     | 1    |
| 3    | 21165        | ARM FRONT                  | 1     |      |
|      | 21174        | ARM REAR                   |       | 1    |
| 4    | 17118        | BRACKET                    | 1     | 1    |
| 5    | 17162        | PLASTIC BEARING            | 2     | 2    |
| 6    | 21095        | CAP                        | 1     | 1    |
| 7    | BH1011L11    | LOCK RING 30X1.5 471       | 1     | 1    |
| 8    | BH2C21L14    | LOCK RING 72X2.5 472       | 1     | 1    |
| 9    | A0A201014    | SCREW M10X60 8.8 Din931 Zn | 2     | 2    |
| 10   | AGA113014    | NUT Il M10 Din985-8 Zn     | 5     | 5    |
| 11   | E63881       | PLATE SPRING 28/10,2X1,25  | 21    | 21   |
| 12   | 17576        | BRACKET                    | 1     | 1    |
| 13   | D18253       | DUST COVER                 | 2     | 2    |
| 14   | 18448        | WASHER 12.2x35x1           | 1     | 1    |
| 15   | 210724000    | WASHER 4*35/12.2           | 3     | 3    |
| 16   | A0C0S4524    | SCREW M12X25 8.8 DIN912 ZN | 1     | 1    |
| 17   | A0C2L1514    | SCREW M12X80 8.8 DIN931 ZN | 1     | 1    |
| 18   | 21182        | DISC                       | 1     | 1    |
| 19   | CE33062RSSKF | BEARING 33062R SKF         | 1     | 1    |
| 20   | CNA40557     | SEALING DIN_3760-A40x55x7  | 1     | 1    |

**MAESTRO 3m MAESTRO 4m**

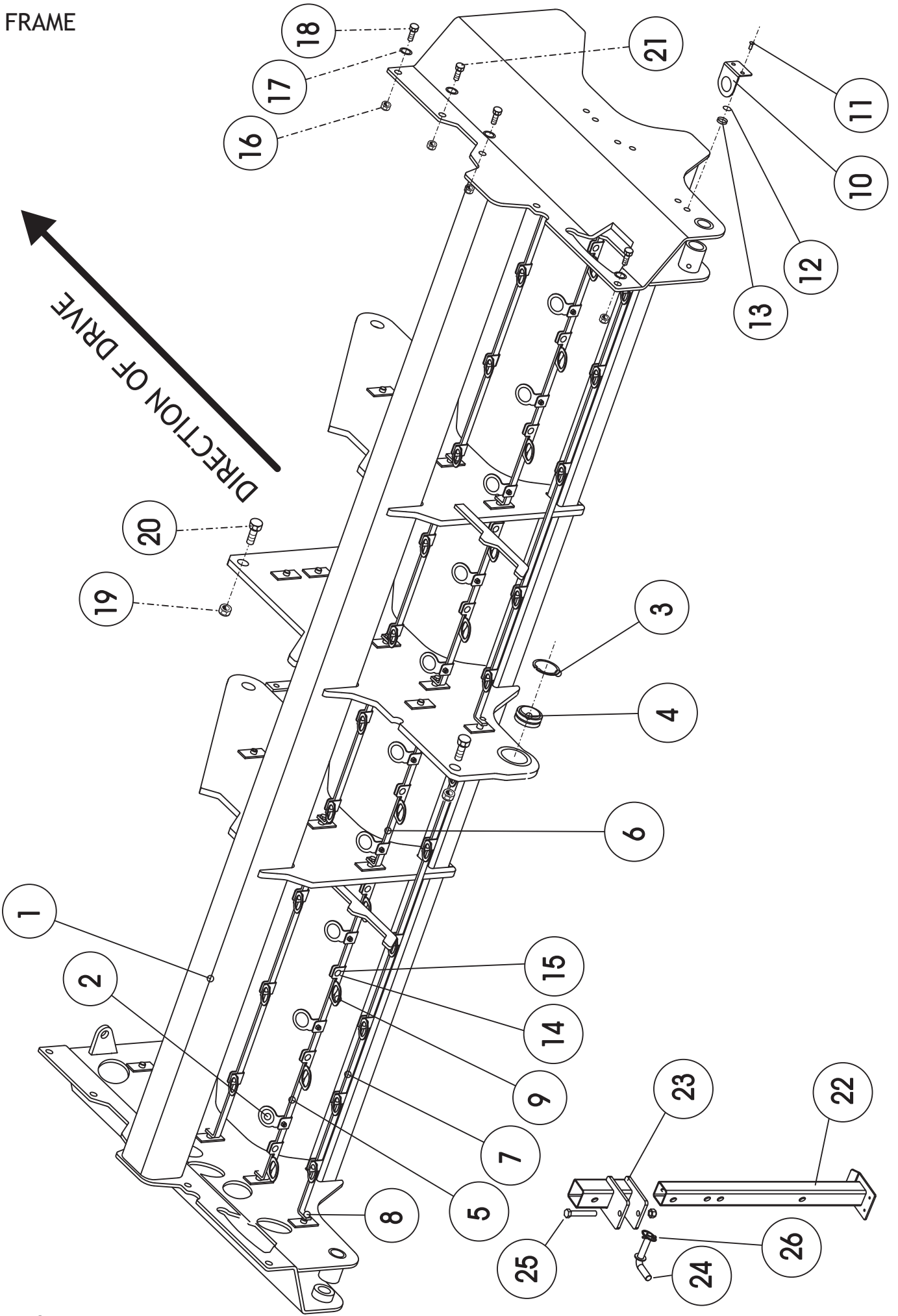
| PART | CODE  | NAME               | MAESTRO 3m | MAESTRO 4m |
|------|-------|--------------------|------------|------------|
|      |       |                    | PCS        | PCS        |
| 21   | 21172 | FRONT COULTER ASSY | 12         | 16         |
|      | 21175 | REAR COULTER ASSY  | 12         | 16         |

# WHEEL FRAME



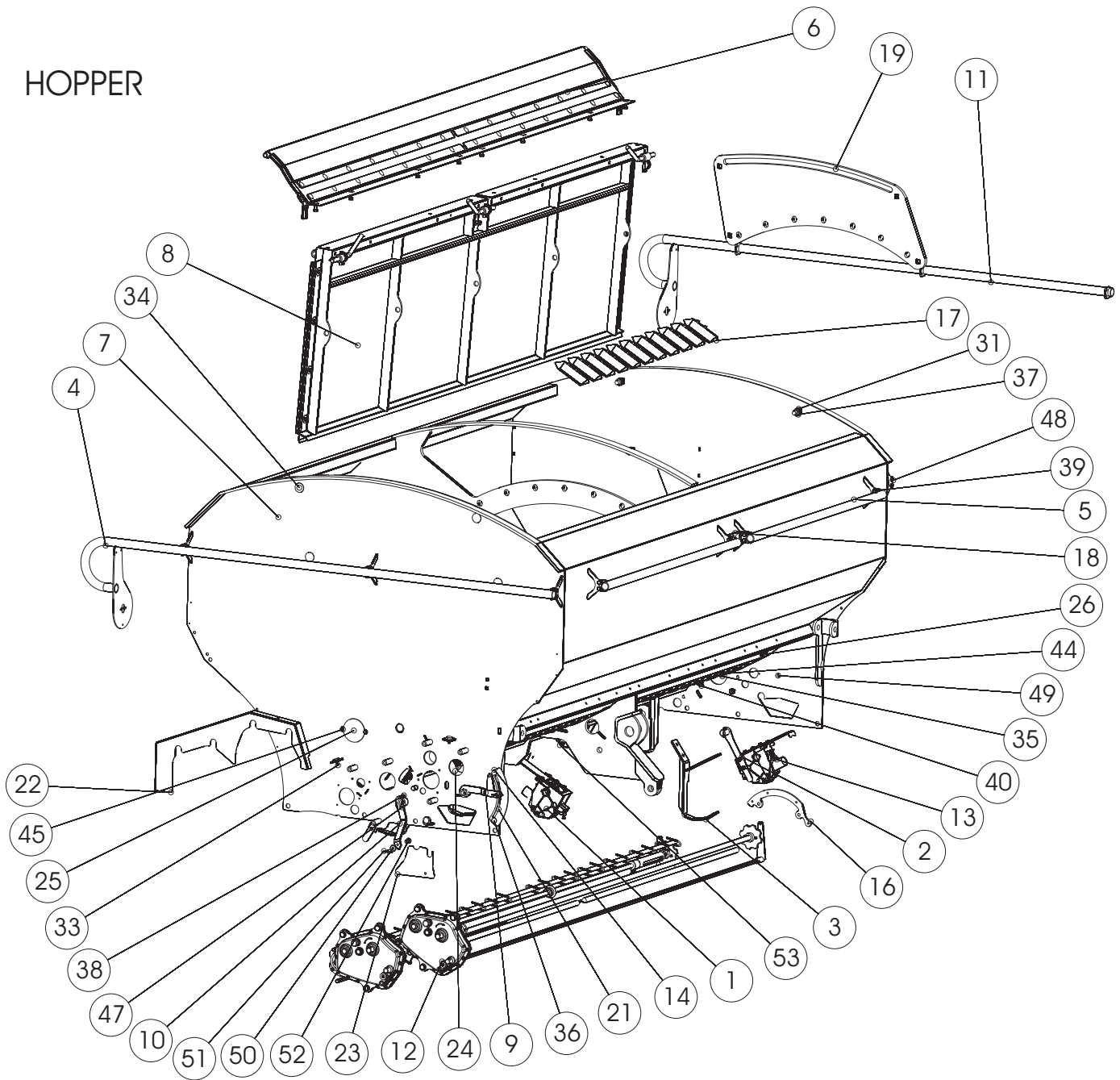
| PART | CODE      | NAME                             | PCS<br>MAESTRO3000 | PCS<br>MAESTRO4000 |
|------|-----------|----------------------------------|--------------------|--------------------|
| 1    | 17318     | WHEEL FRAME                      | 1                  |                    |
|      | 18126     | WHEEL FRAME                      |                    | 1                  |
| 2    | 17867     | CYLINDER ASSEMBLED               | 1                  |                    |
| 3    | 17339     | PIN                              | 1                  |                    |
| 4    | 17289     | PIN                              | 2                  |                    |
| 5    | 18553     | SWING PLATE ASSY                 | 6                  | 8                  |
| 6    | CEGE17    | BEARING Ø17                      | 12                 | 16                 |
| 7    | 17521     | SHAFT FOR FORK                   | 1                  |                    |
|      | 18144     | SHAFT FOR FORK                   |                    | 1                  |
| 8    | 18815     | REACTION BAR BASIC WELDED Ø20    | 12                 | 16                 |
| 9    | 17349     | SWING PLATE FOR PRESSURE SPRINGS | 12                 | 16                 |
| 10   | 17572     | BUSHING                          | 12                 | 16                 |
| 11   | 17340     | PIN                              | 6                  | 8                  |
| 12   | A0C2L1514 | 6-SCREW M12X80 8.8 DIN931 ZN     | 12                 | 16                 |
| 13   | AGC113014 | 6-NUT IL M12 DIN985-8 ZN         | 12                 | 16                 |
| 14   | A081S1014 | 6-SCREW M8*55                    | 6                  | 8                  |
| 15   | CV0303430 | Dymet BEARING 30/34/30           | 8                  | 10                 |
| 16   | BJ6510001 | GREASE NIPPLE M 8*1.25/45ast514  | 6                  | 8                  |
| 17   | 17667     | PIN                              | 2                  | 2                  |
| 18   | Bj6157600 | GREASE NIPPLE M 6*1 90°          | 2                  | 2                  |
| 19   | BA81F0004 | SPLIT PIN 8X45 DIN94 ZN          | 12                 | 16                 |
| 20   | B5L173024 | WASHER M20 DIN125A ZN            | 12                 | 16                 |
| 21   | AGG113014 | HEX SCREW M16 IL                 | 12                 | 16                 |
| 22   | A0A2F1514 | 6-SCREW M10X75 8.8 DIN931 ZN     | 5                  | 5                  |
| 23   | BJ6500000 | GREASE NIPPLE M8 STRAIGHT        | 3                  | 3                  |
| 24   | AGA113014 | 6-NUT IL M10 DIN985-8 ZN         | 5                  | 5                  |
| 25   | Ag8113014 | 6-NUT M8 IL                      | 6                  | 8                  |
| 26   | 18812     | PIN FOR REACTION BAR Av22        | 12                 | 16                 |
| 27   | 21103     | SPACER 17/23/5                   | 24                 | 32                 |
|      | 17366     | SYLINDER WELDED (WITHOUT PLATES) | 1                  | 1                  |

FRAME



| PART | CODE      | NAME                              | PCS         |             |
|------|-----------|-----------------------------------|-------------|-------------|
|      |           |                                   | MAESTRO3000 | MAESTRO4000 |
| 1    | 17285     | FRAME WELDED                      | 1           |             |
|      | 18074     | FREME WELDED                      |             | 1           |
| 2    | 17776     | GUIDE                             | 33          | 45          |
| 3    | BH2220021 | LOCK RING 62x2                    | 1           | 1           |
| 4    | CEGE40    | ARTICULATION BEARING INA GE 40 DO | 1           | 1           |
| 5    | 18928     | ROD L=857                         | 4           |             |
|      | 18931     | ROD L=1357                        |             | 4           |
| 6    | 18930     | ROD L=487                         | 4           | 4           |
| 7    | 18931     | ROD L=1357                        | 2           |             |
|      | 18932     | ROD L=1861                        |             | 2           |
| 8    | A080G1514 | 6-SCREW M8X16 8.8 DIN 933 ZN      | 20          | 20          |
| 9    | 18017     | GUIDE LOWER                       | 11          | 15          |
| 10   | 17999     | SIDE GUIDE                        | 4           | 4           |
| 11   | A060G6024 | SCREW M6X16 4.8 DIN965ZN PO       | 8           | 8           |
| 12   | B560E1524 | WASHER M 6 DIN125A ZN             | 8           | 8           |
| 13   | AG6111014 | 6-NUT M 6 DIN934-8 ZN             | 8           | 8           |
| 14   | A060L3014 | LOCK SCREW M6*20                  | 44          | 60          |
| 15   | AG6113014 | HEX NUT M6 IL                     | 44          | 60          |
| 16   | AGG113014 | HEX NUT M16 IL                    | 8           | 8           |
| 17   | B5G102524 | WASHER M16                        | 16          | 16          |
| 18   | A0G2L1524 | HEX NUT M16*80                    | 2           | 2           |
| 19   | AGR113014 | HEX NUT M24 IL                    | 2           | 2           |
| 20   | A14076    | HEX SCREW M24*60                  | 2           | 2           |
| 21   | A0G1A1514 | HEX SCREW M16*40                  | 6           | 6           |
| 22   | 17568     | SUPPORT LEG                       | 2           | 2           |
| 23   | 17922     | BRACKET                           | 2           | 2           |
| 24   | 14505     | PIN                               | 2           | 2           |
| 25   | A0G3A1512 | HEX SCREW M16*100                 | 2           | 2           |
| 26   | AGG113014 | HEX NUT M16 IL                    | 2           | 2           |

# HOPPER

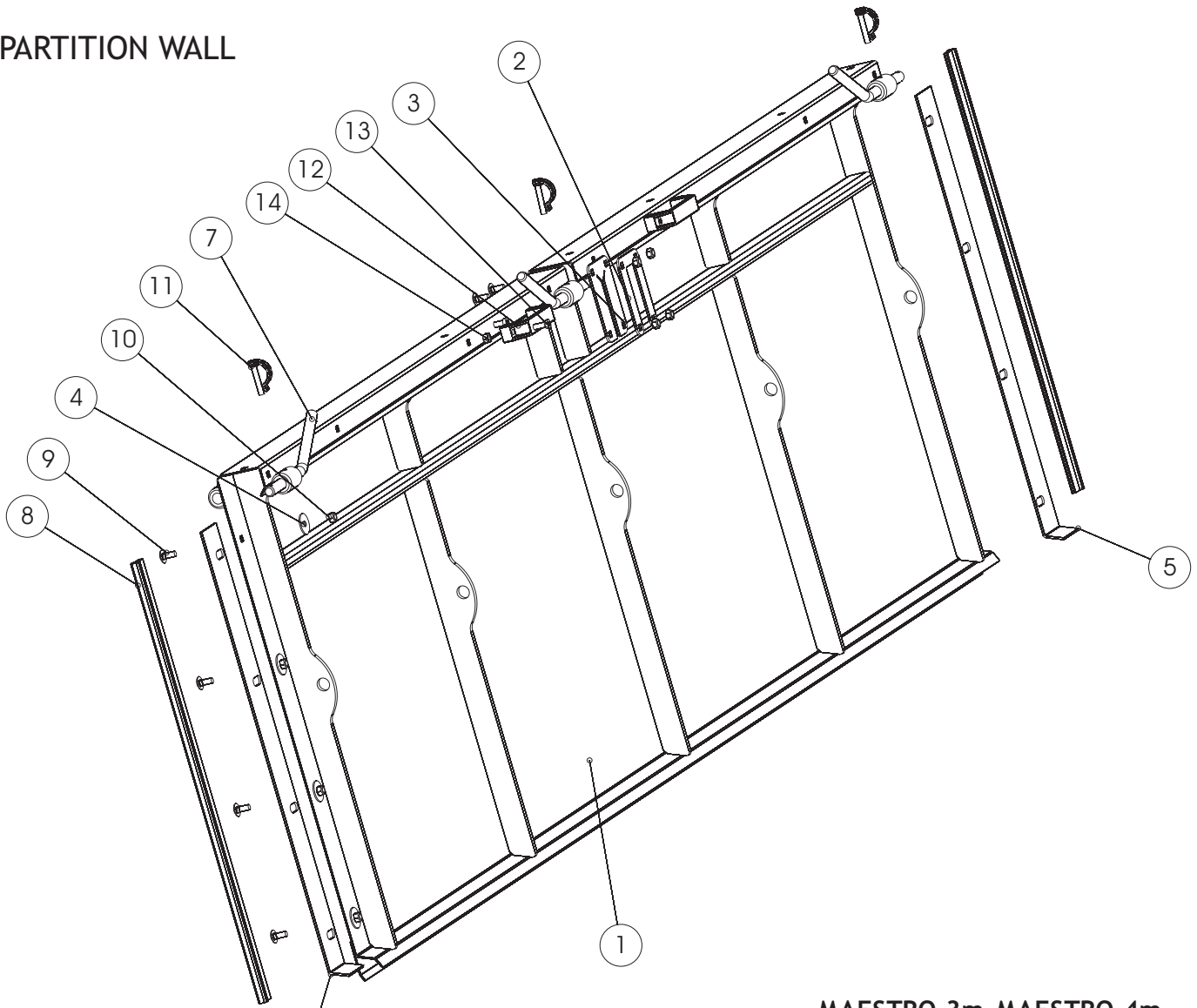


| PART | CODE  | NAME                  | MAESTRO 3000 MAESTRO 4000 |     |
|------|-------|-----------------------|---------------------------|-----|
|      |       |                       | PCS                       | PCS |
| 1    | 17580 | SEED METERING DEVICE  | 1                         | 1   |
| 2    | 17673 | LEVER ASSY            | 4                         | 4   |
| 3    | 17676 | SCALE PLATE           | 4                         | 4   |
| 4    | 17895 | HANDRAIL RIGHT        | 1                         | 1   |
| 5    | 17901 | FRONT HANDRAIL        | 2                         | 2   |
| 6    | 20731 | UPPER PART. WALL ASSY | 1                         |     |
|      | 20864 | UPPER PART. WALL ASSY |                           | 1   |
| 7    | 20783 | HOPPER MAESTRO 3000   | 1                         |     |
|      | 20784 | HOPPER MAESTRO 4000   |                           | 1   |
| 8    | 20837 | PARTITION WALL ASSY   | 1                         |     |
|      | 20866 | PARTITION WALL ASSY   |                           | 1   |
| 9    | 20863 | LEVER FERTILIZER      | 1                         | 1   |
| 10   | 21139 | LEVER SEED            | 1                         | 1   |
| 11   | 21168 | HANDRAIL LEFT         | 1                         | 1   |



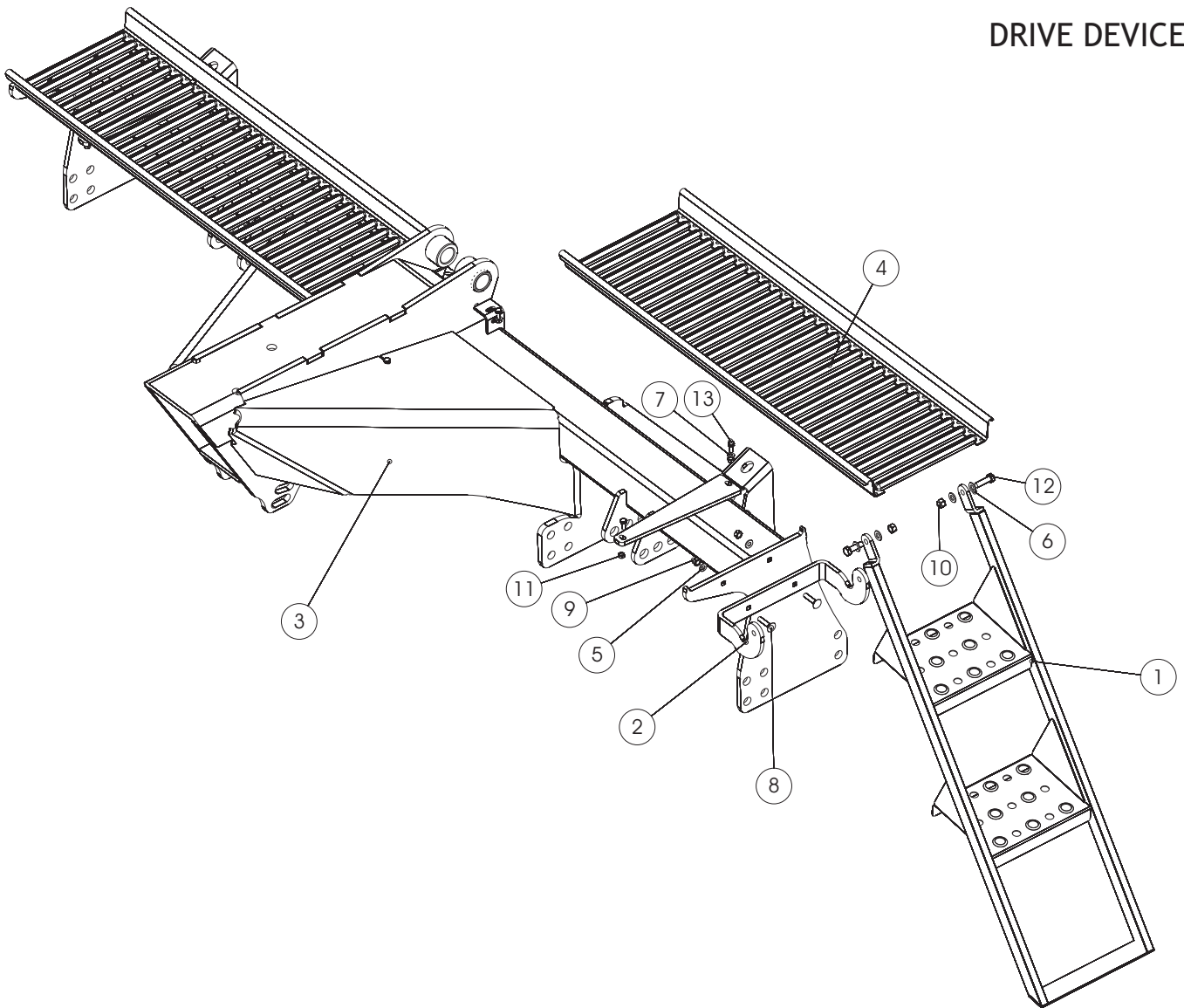
| PART | CODE      | NAME                            | MAESTRO 3000 | MAESTRO 4000 |
|------|-----------|---------------------------------|--------------|--------------|
|      |           |                                 | PCS          | PCS          |
| 12   | 21241     | DRIVE MECHANISM 3000 ASSY       | 1            |              |
|      | 21242     | DRIVE MECHANISM 4000 ASSY       |              | 1            |
| 13   | 21247     | FERTILIZER METERING DEVICE      | 24           | 32           |
| 14   | 13445     | BUSHING                         | 6            | 6            |
| 15   | 160828    | BEARING, UPPER HALF             | 3            | 4            |
| 16   | 17705     | SCALE PLATE                     | 2            | 2            |
| 17   | D17941    | BOTTOM CONE                     | 22           | 30           |
| 18   | 18441     | SUPPORT                         | 1            | 1            |
| 19   | 20771     | PLATE                           | 2            | 2            |
| 20   | 20861     | BEARING, LOWER HALF             | 3            | 4            |
| 21   | 21114     | SCALE PLATE FERT.               | 1            | 1            |
| 22   | 21115     | COVER, BIG                      | 1            | 1            |
| 23   | 21119     | COVER, LOWER                    | 1            | 1            |
| 24   | 21123     | INNER COVER                     | 1            | 1            |
| 25   | 21204     | EXTRA COVER                     | 2            | 2            |
| 26   | 21248     | PLUG                            | 2            | 2            |
| 27   | D40004061 | STRAP                           | 12           | 12           |
| 28   | D30000399 | PLUG 9mm                        | 6            | 8            |
| 29   | D40002022 | PLUG 42mm                       | 2            | 2            |
| 30   | 17969     | TRAMLINES ASSY                  | 1            | 1            |
| 31   | B5G102524 | WASHER M16                      | 8            | 8            |
| 33   | A01560    | SCREW M*6X26 34176400 MSK       | 6            | 6            |
| 34   | A0G2F3514 | SCREW.M16X40 8.8 Din603 Zn      | 8            | 8            |
| 35   | A05150    | SCREW M8X20 A2 DIN 603 AI       | 16           | 16           |
| 36   | A08103014 | SCREW. M8X30 8.8 Din 603 Zn     | 2            | 2            |
| 37   | AGG113014 | NUT IL M16 Din985-8 Zn          | 8            | 8            |
| 38   | AG6113014 | NUT IL M 6 Din985-8 Zn          | 4            | 4            |
| 39   | A50710    | NUT IL M8 A2 Din985 Aisi        | 20           | 32           |
| 40   | AG8113014 | NUT IL M 8 DIN985-8 ZN          | 16           | 16           |
| 41   | AG8113014 | NUT IL M 8 Din985-8 Zn          | 2            | 2            |
| 42   | A670A9824 | SCREW 4.8X13 A2 DIN7981C POZ    | 22           | 34           |
| 43   | A670G9824 | SCREW 4.8X16 A2 DIN7981C POZ    | 6            | 6            |
| 44   | B60800    | WASHER M 8 DIN9021 ZNK          | 16           | 16           |
| 45   | A060C1024 | SCREW M6X12 8.8 DIN 933 ZN      | 4            | 4            |
| 46   | A060L1524 | SCREW M6X20 8.8 Din 933 Zn      | 3            | 3            |
| 47   | A061A1524 | SCREW M6X40 8.8 Din 933 Zn      | 1            | 1            |
| 48   | A080S1514 | SCREW M8X25 8.8 Din933 Zn       | 20           | 32           |
| 49   | A07330    | SCREW M10X30 10.9 DIN799        | 4            | 4            |
| 50   | 19848     | RUBBER WASHER 9*25              | 2            | 2            |
| 51   | D30142    | WING NUT M8                     | 2            | 2            |
| 52   | A080S3014 | SCREW M8X25 4.6 DIN 603 ZN      | 2            | 2            |
| 53   | 20875     | SEED METERING DEVICE, TRAMLINES | 4            | 4            |
| 54   | D17173    | TARP COVER 3m                   | 1            |              |
|      | D18162    | TARP COVER 4m                   |              | 1            |

# PARTITION WALL



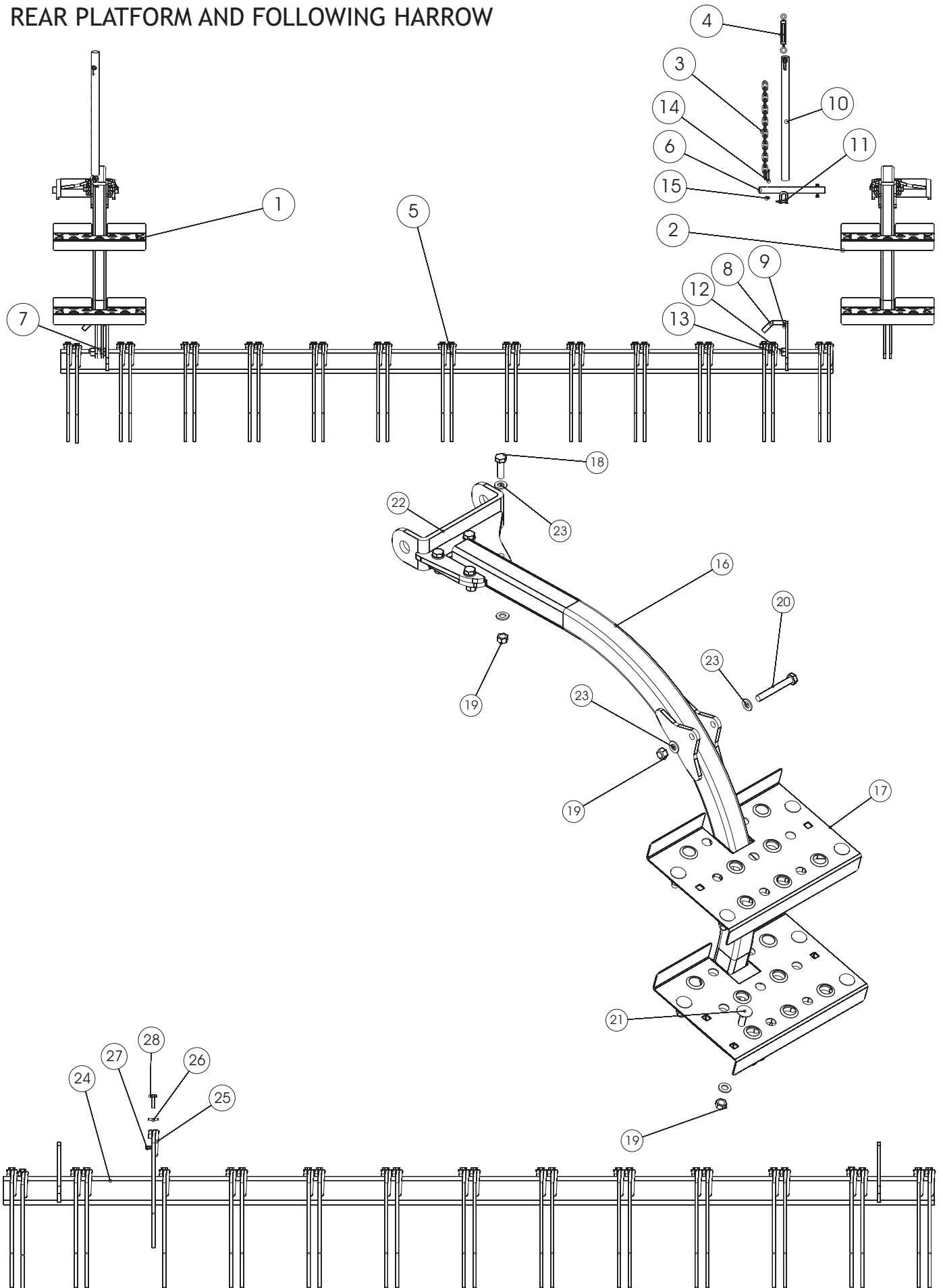
| PART | CODE      | NAME                        | MAESTRO 3m MAESTRO 4m |     |
|------|-----------|-----------------------------|-----------------------|-----|
|      |           |                             | PCS                   | PCS |
| 1    | 21185     | PARTITION WALL WELDED       | 1                     |     |
|      | 20860     | PARTITION WALL WELDED       |                       | 1   |
| 2    | 17889     | PLATE                       | 1                     | 1   |
| 3    | D17891    | SEALING                     | 1                     | 1   |
| 4    | 14591     | WASHER                      | 8                     | 8   |
| 5    | 17169     | SEALING PLATE               | 1                     | 1   |
| 6    | 18995     | SEALING PLATE               | 1                     | 1   |
| 7    | 21191     | LOCK PIN                    | 3                     | 3   |
| 8    | 20859     | SEALING                     | 2                     | 2   |
| 9    | A05150    | SCREW M8X20 A2 DIN 603 AI   | 12                    | 12  |
| 10   | A50710    | NUT IL M8 A2 DIN985 AISI    | 12                    | 12  |
| 11   | BEC000003 | RING PIN 5080451            | 3                     | 3   |
| 12   | D30100    | HANDLE                      | 2                     | 2   |
| 13   | A04610    | SCREW M8X20 A2 Din 912 Aisi | 4                     | 4   |
| 14   | A50710    | NUT IL M8 A2 Din985 Aisi    | 4                     | 4   |
|      | 20837     | WALL LOWER PART ASSY        | 1                     |     |
|      | 20866     | WALL LOWER PART ASSY        |                       | 1   |

# DRIVE DEVICE



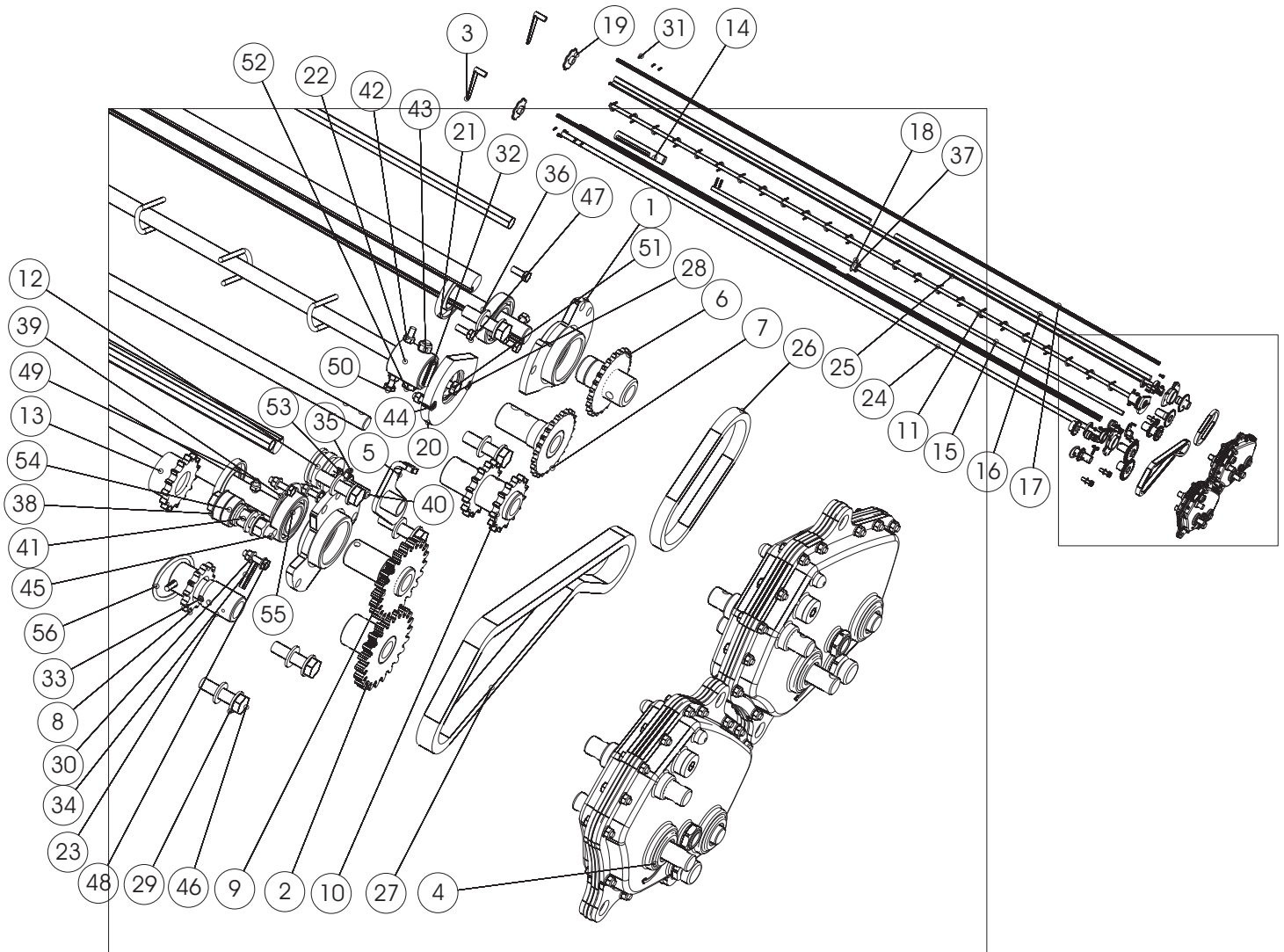
| PART | CODE      | NAME                       | MAESTRO 3m MAESTRO 4m |     |
|------|-----------|----------------------------|-----------------------|-----|
|      |           |                            | PCS                   | PCS |
| 1    | 17933     | STEP                       | 1                     | 1   |
| 2    | 17932     | BRACKET                    | 1                     | 1   |
| 3    | 20760     | DRAWBAR FRAME 2010         | 1                     |     |
|      | 20818     | DRAWBAR FRAME 2010         |                       | 1   |
| 4    | 17976     | PLATFORM                   | 2                     |     |
|      | 18174     | PLATFORM                   |                       | 2   |
| 5    | B5A0MB024 | WASHER M10 Din125A Zn      | 2                     | 2   |
| 6    | B5C0R2024 | WASHER M12 Din125A Zn      | 4                     | 4   |
| 7    | B580H1624 | WASHER M 8 Din125A Zn      | 8                     | 8   |
| 8    | A0A1AG511 | SCREW M10*45 Mus           | 2                     | 2   |
| 9    | AGA113014 | NUT II M10 Din985-8 Zn     | 2                     | 2   |
| 10   | AGC113014 | NUT II M12 Din985-8 Zn     | 2                     | 2   |
| 11   | AG8113014 | NUT II M 8 Din985-8 Zn     | 8                     | 8   |
| 12   | A0C1A1014 | SCREW M12X40 8.8 Din933 Zn | 2                     | 2   |
| 13   | A080L1514 | SCREW M8X20 8.8 Din 933 Zn | 8                     | 8   |

# REAR PLATFORM AND FOLLOWING HARROW



| PART | CODE      | NAME                         | MAESTRO 3m MAESTRO 4m |     |
|------|-----------|------------------------------|-----------------------|-----|
|      |           |                              | PCS                   | PCS |
| 1    | 21090     | ARM LEFT ASSY                | 1                     | 1   |
| 2    | 21091     | ARM RIGHT ASSY               | 1                     | 1   |
| 3    | 17626     | CHAIN                        | 2                     | 2   |
| 4    | A08761    | ADJUSTER M12 D1480           | 2                     | 2   |
| 5    | 20620     | FRAME ASSY                   | 1                     |     |
|      | 20632     | FRAME ASSY                   |                       | 1   |
| 6    | 17625     | PIN                          | 2                     | 2   |
| 7    | 18100     | BUSHING                      | 2                     | 2   |
| 8    | 18125     | PIN                          | 2                     | 2   |
| 9    | BD3011404 | PIN 4MM DIN11024 ZN          | 2                     | 2   |
| 10   | 18524     | TUBE                         | 2                     | 2   |
| 11   | BC3000002 | SHACKLE M8 ZN                | 4                     | 4   |
| 12   | AGL113014 | NUT IL M20 DIN985-8 ZN       | 2                     | 2   |
| 13   | A13650    | SCREW M20X50 8.8 DIN933 ZN   | 2                     | 2   |
| 14   | A061A1524 | SCREW M6X40 8.8 DIN 933 ZN   | 4                     | 4   |
| 15   | AG6113014 | NUT IL M 6 DIN985-8 ZN       | 4                     | 4   |
| 16   | 21083     | ARM WELDED                   | 1                     | 1   |
| 17   | 21082     | STEP                         | 2                     | 2   |
| 18   | A0C1A1014 | SCREW M12X40 8.8 DIN933 ZN   | 4                     | 4   |
| 19   | AGC113014 | NUT IL M12 DIN985-8 ZN       | 13                    | 13  |
| 20   | A0C301514 | SCREW M12X90 8.8 DIN931ZNC   | 1                     | 1   |
| 21   | A09610    | SCREW M12X35 8.8 DIN 603 ZNC | 8                     | 8   |
| 22   | 21087     | HINGE                        | 1                     | 1   |
| 23   | B5COR2024 | WASHER M12 DIN125A ZN        | 18                    | 1   |
| 24   | 17511     | FRAME WELDED                 | 1                     |     |
|      | 18151     | FRAME WELDED                 |                       | 1   |
| 25   | 15182     | TINE                         | 26                    | 34  |
| 26   | 134110000 | WASHER M12 DIN125A ZN        | 26                    | 34  |
| 27   | AGA113014 | NUT IL M10 Din985-8 Zn       | 26                    | 34  |
| 28   | A0A151014 | SCREW M10X35 8.8 DIN933 ZN   | 26                    | 34  |

# FEED SHAFTS AND MECHANISM

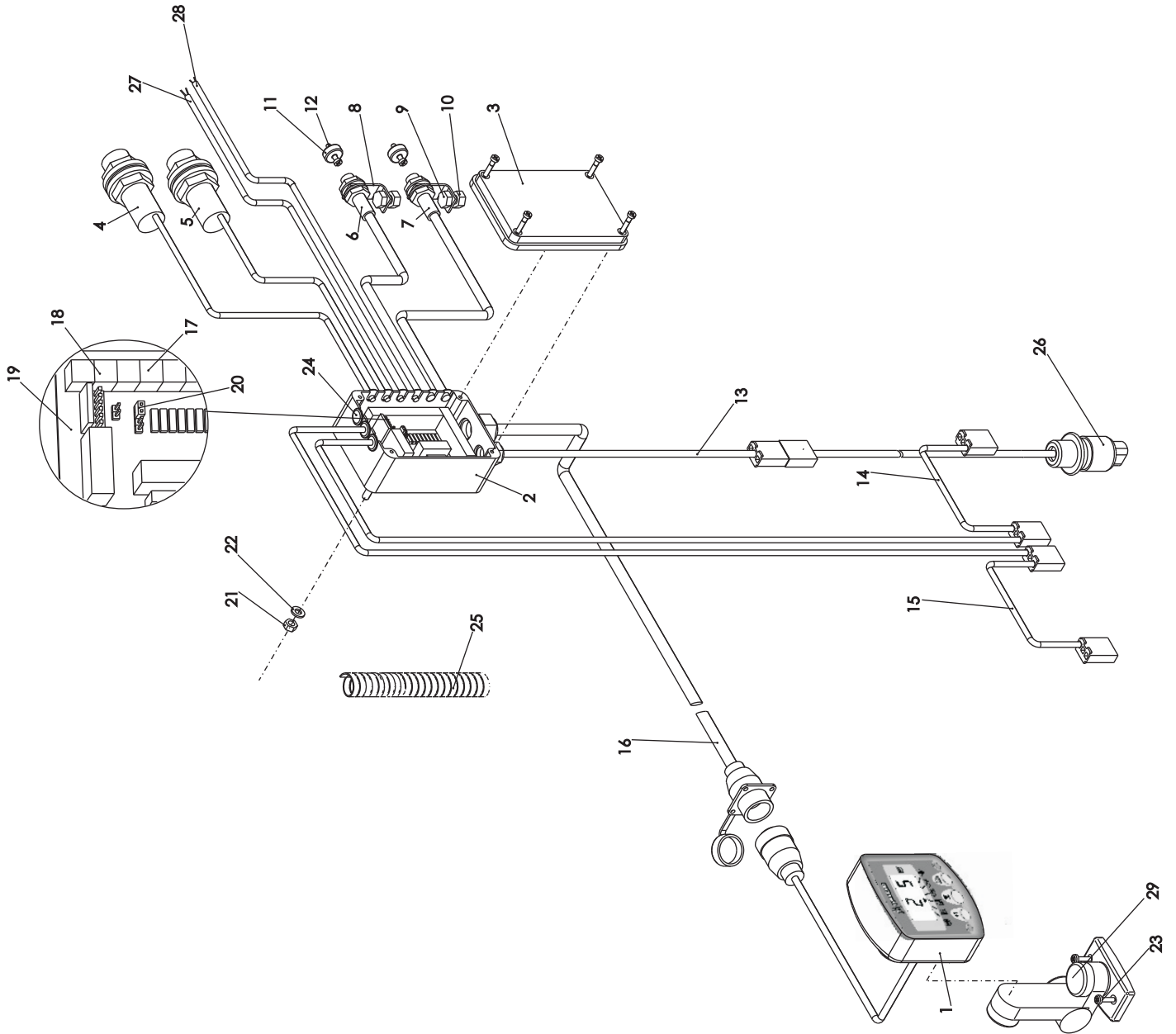


MAESTRO 3m MAESTRO 4m

| PART | CODE   | NAME                 | PCS | PCS |
|------|--------|----------------------|-----|-----|
| 1    | 17185  | BEARING HOUSING      | 2   | 2   |
| 2    | 17556  | GEAR WHEEL           | 1   | 1   |
| 3    | 17679  | LEVER                | 2   | 2   |
| 4    | 18649  | GEARBOX              | 2   | 2   |
| 5    | 19081  | CHAIN TENSIONER      | 1   | 1   |
| 6    | 21130  | SPROCKET Z25 3/8"    | 1   | 1   |
| 7    | 21131  | SPROCKET Z25 3/8"    | 1   | 1   |
| 8    | 21134  | SPROCKET Z13         | 1   | 1   |
| 9    | 21136  | GEAR WHEEL Z22       | 1   | 1   |
| 10   | 21138  | DOUBLE GEARWHEEL Z15 | 1   | 1   |
| 11   | 21206  | MIXING AXLE          | 1   |     |
|      | 21245  | MIXING AXLE          |     | 1   |
| 12   | 137224 | ROLLER               | 1   | 1   |
| 13   | 137351 | SPROCKET Z15 1/2"    | 1   | 1   |
| 14   | 17252  | TUBE                 | 1   | 1   |
| 15   | 17247  | AXLE                 | 1   |     |
|      | 18141  | AXLE                 |     | 1   |
| 16   | 17563  | BOTTOF FLAP AXLE     | 4   |     |
|      | 18140  | BOTTOF FLAP AXLE     |     | 4   |

| PART | CODE      | NAME                       | PCS | PCS |
|------|-----------|----------------------------|-----|-----|
| 17   | 17564     | SMALL FLAP AXLE            | 2   |     |
|      | 18136     | SMALL FLAP AXLE            |     | 2   |
| 18   | 18459     | SUPPORT BEARING            | 1   | 1   |
| 19   | 18996     | NYLON BEARING              | 2   | 2   |
| 20   | 19922     | SEALING HOUSING            | 1   | 1   |
| 21   | D49009    | SEALING 30*55*7 CRW1R      | 2   | 2   |
| 22   | 21129     | BUSHING                    | 1   | 1   |
| 23   | 21132     | EXTENSION AXLE             | 1   | 1   |
| 24   | 21236     | FEED AXLE FERT.            | 1   |     |
|      | 21243     | FEED AXLE FERT.            |     | 1   |
| 25   | 21237     | FEED AXLE SEED             | 1   |     |
|      | 21244     | FEED AXLE SEED             |     | 1   |
| 26   | 21239     | CHAIN 3/8"                 | 1   | 1   |
| 27   | 21240     | CHAIN                      | 1   | 1   |
| 28   | D49009    | SEALING 30*55*7 CRW1R      | 1   | 1   |
| 29   | B5C0R2024 | WASHER M12 Din125A Zn      | 17  | 17  |
| 30   | B560E1524 | WASHER M 6 Din125A Zn      | 6   | 6   |
| 31   | B840N0001 | PIN 4X22 DIN1481 ZNC       | 6   | 6   |
| 32   | B860V0001 | PIN 6X28 Din1481 Znc       | 1   | 1   |
| 33   | B86120001 | PIN 6X32 Din1481 Znc       | 1   | 1   |
| 34   | B86160001 | PIN 6X36 Din1481 Znc       | 3   | 3   |
| 35   | BH0H11L16 | LOCK RING 16X1 471         | 1   | 1   |
| 36   | BH1011L11 | LOCK RING 30X1.5 471       | 3   | 3   |
| 37   | BH1511L12 | LOCK RING 34X1.5 471       | 1   | 1   |
| 38   | BH1210L11 | LOCK RING 32X1.2 472       | 1   | 1   |
| 39   | BH1S1S0J1 | LOCK RING 55X2 472         | 1   | 1   |
| 40   | A0A201014 | SCREW M10X60 8.8 Din931 Zn | 1   | 1   |
| 41   | AGC113014 | NUT Il M12 Din985-8 Zn     | 2   | 2   |
| 42   | AG6113014 | NUT Il M 6 Din985-8 Zn     | 9   | 9   |
| 43   | AG8113014 | NUT Il M 8 Din985-8 Zn     | 1   | 1   |
| 44   | A060L2025 | SCREW M6X25 4.8 Din 84 Zn  | 2   | 2   |
| 45   | A0C2A1514 | SCREW M12X70 8.8 DIN931ZNC | 1   | 1   |
| 46   | A0C1F1024 | SCREW M12X45 8.8 Din933 Zn | 6   | 6   |
| 47   | A060G1024 | SCREW M6X16 8.8 Din 933 Zn | 7   | 7   |
| 48   | A02805    | SCREW M6X25 10.9 933 Zn    | 3   | 3   |
| 49   | A061A1524 | SCREW M6X40 8.8 Din 933 Zn | 2   | 2   |
| 50   | A03655    | SCREW M6X70 8.8 Din931 Zn  | 1   | 1   |
| 51   | A080G1514 | SCREW M8X16 8.8 Din 933 Zn | 1   | 1   |
| 52   | A05101812 | SCREW M5X50 Din 933        | 1   | 1   |
| 53   | AGA111014 | NUT M10 Din934-8 Zn        | 3   | 3   |
| 54   | CE62012RS | BEARING 6201 2 Rs          | 2   | 2   |
| 55   | CE60062RS | BEARING 6006 2 Rs          | 2   | 2   |
| 56   | BE6000002 | RING PIN 6X40 L=40 ZN      | 1   | 1   |

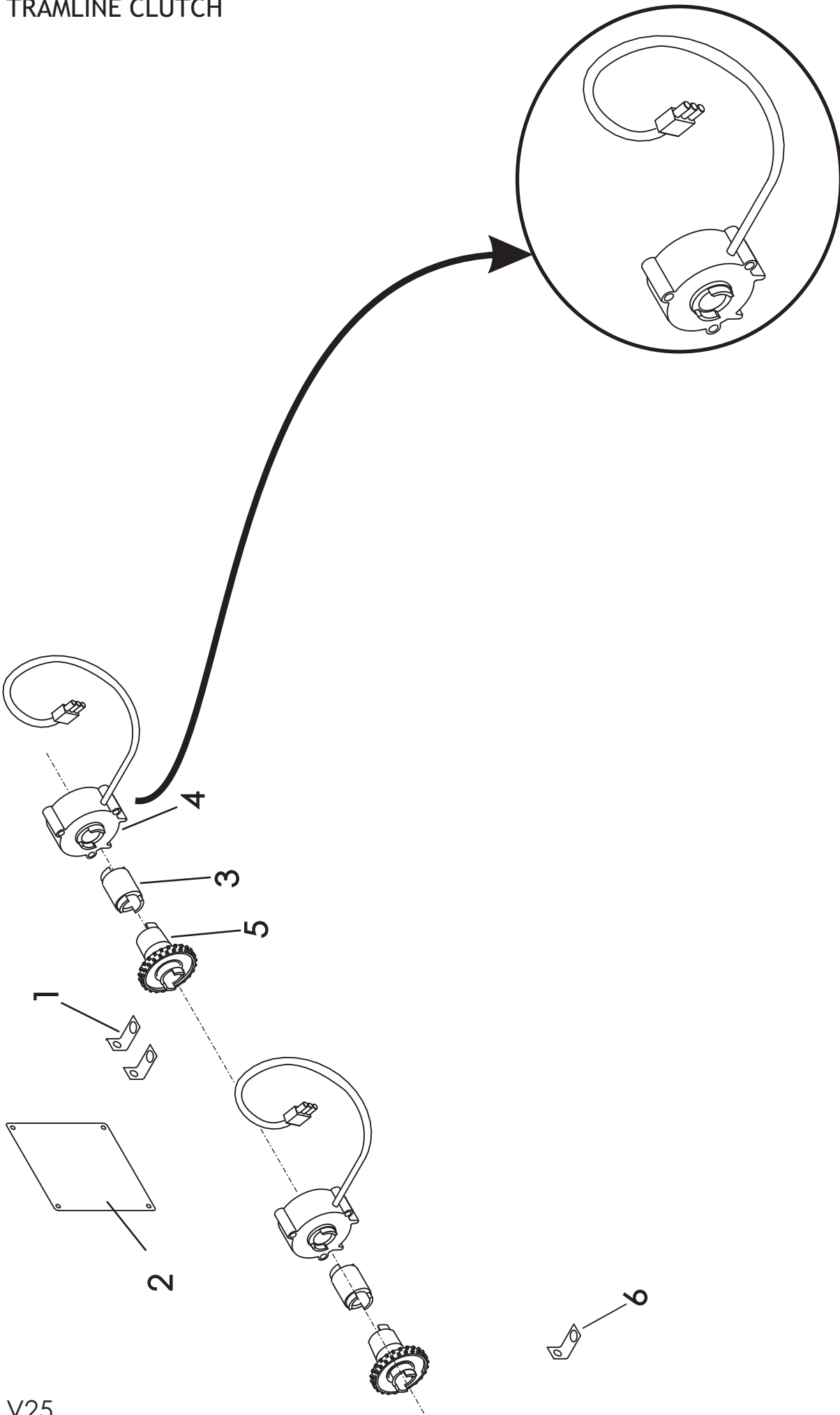
# WIZARD CONTROL UNIT



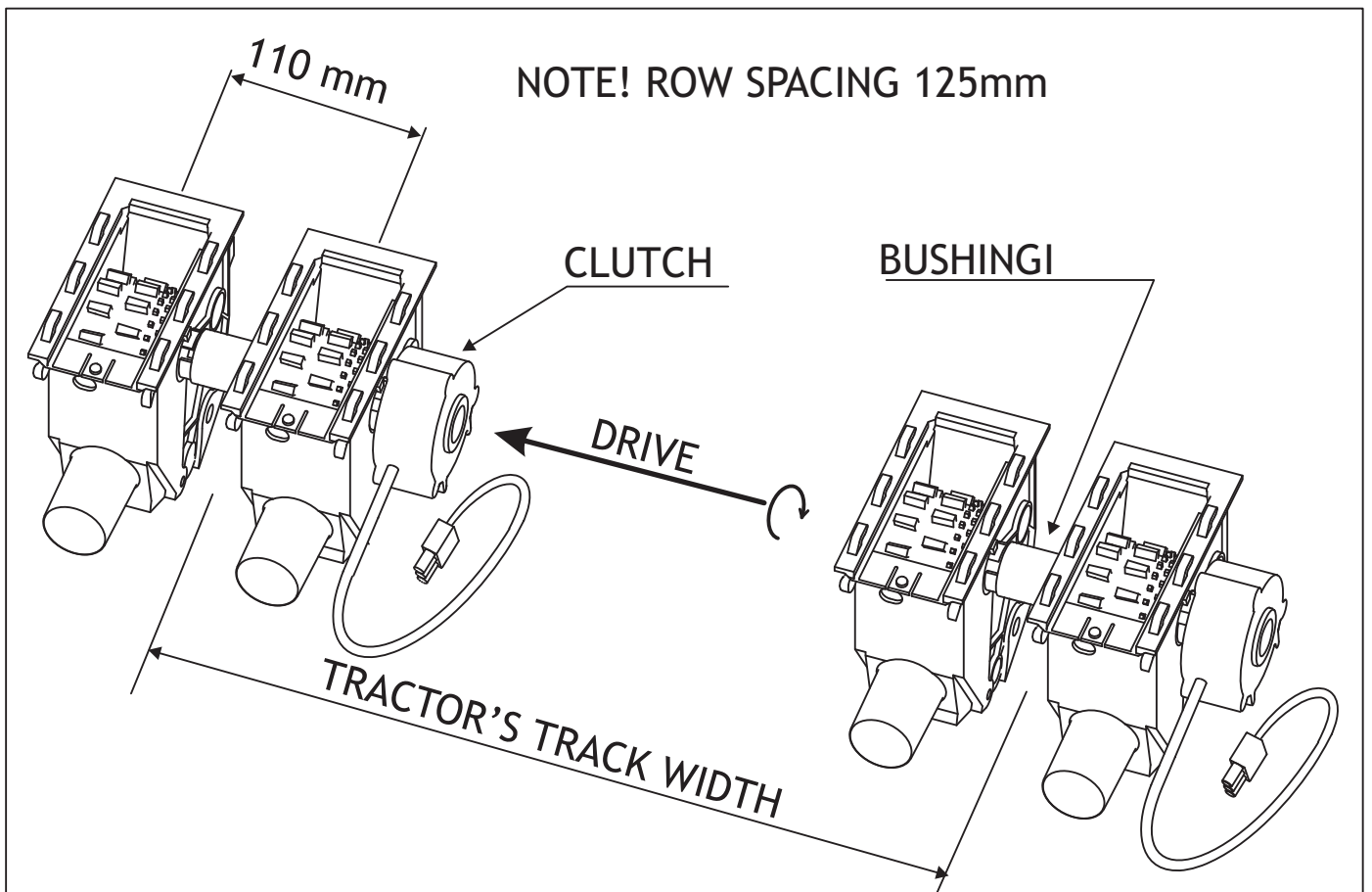


| VIITE<br>REF. | NRO<br>NR.     | KOODI<br>KOD         | NIMIKE                            | BESKRIVNING                       | BESCHREIBUNG                      | DESCRIPTION                         |
|---------------|----------------|----------------------|-----------------------------------|-----------------------------------|-----------------------------------|-------------------------------------|
| ANM.<br>REF.  | NR.<br>NO      | CODE<br>CODE         |                                   |                                   |                                   |                                     |
| 1             | S/HU/306-2-002 | D40585               | MONITORI WIZARD                   | MONITOR WIZARD                    | MONITOR WIZARD                    | INSTRUMENT WIZARD                   |
| 2             | S/HU/306-5-001 |                      | MONITORI WIZARD +<br>KYTKENTÄRSÄÄ | MONITOR WIZARD +<br>KOPPLINGSKÄPA | MONITOR WIZARD +<br>ANSCHLUSSDOSE | INSTRUMENT WIZARD +<br>JUNCTION BOX |
| 3             | S/AC/306-3-003 |                      | KANSI                             | DÄCK                              | ANSCHLUSSDOSEDECK                 | JUNCTION BOX LID                    |
| 4             | S/F713-009     |                      | ANTURI/APULANTA                   | SENSOR/GÖDSEL                     | INPULSGEBER/DÜNGER                | SENSOR/FERT.LEVEL                   |
| 5             | S/F713-009     |                      | ANTURI/SIEMEN                     | SENSOR/FRÖNIVÄ                    | INPULSGEBER/KERN                  | SENSOR/SEED LEVEL                   |
| 6             | S/Z782-006     |                      | ANTURI/NOPEUS                     | SENSOR/HASTIGHET                  | INPULSGEBER/TEMPO                 | SENSOR/SPEED                        |
| 7             | S/Z782-006     |                      | ANTURI/LASKURI                    | SENSOR/BERÄKNING                  | IMPULSGEBER/ZÄHLER                | SENSOR/TL. COUNT                    |
| 8             | 14837          | 3-14837              | ANTURIN PIDIN                     | SENSORHÄLLARE                     | HALTER FÜR IMPULSGEBER            | SENSOR HOLDER                       |
| 9             | A080G1514      | M8 X 16              | KUUSIORUUVI                       | SEKKANTSKRUV                      | SECHSKANTSKRAUBE                  | HEX SCREW                           |
| 10            | Ag8113014      | M8                   | KUUSIOMUTTERI                     | SEKKANTMUTTER                     | SECHSKANTMUTTER                   | HEX NUT                             |
| 11            | S/MG/193-1-020 | 16 X 6<br>M4         | MAGNEETTI                         | MAGNET                            | MAGNET                            | MAGNET                              |
| 12            |                |                      | MAGN.KIIN.RUUVI                   | MAGNET FÄST.SKRUV                 | MAGN.AUFSPANNSCHRAUBE             | SCREW, FOR MAGNET                   |
| 13            | S/CB/306-1-020 |                      | SÄHKÖJOHDIN                       | STRÖMLEDNING                      | STROMLEITER                       | POWER LEAD                          |
| 14            | S/CB/306-1-025 |                      | AJOURAMERK. 2                     | KÖRSPÄRMÄRKÖR 2                   | FAHRSTRASSE BESCHRIFTUNG 2        | TRAMLINE 2                          |
| 15            | S/CB/306-1-024 |                      | AJOURAMERK. 1                     | KÖRSPÄRMÄRKÖR 1                   | FAHRSTRASSE BESCHRIFTUNG 1        | TRAMLINE 1                          |
| 16            | S/CB/306-3-020 |                      | JOHTO MONITORILLE                 | LEDNING TILL MONIT.               | LEITER FÜR MONITOR                | INSTRUMENT LEAD                     |
| 17            | S/T602-102     |                      | 2-NAPAINEN IDC                    | 2-POLIG IDC                       | 2-POL IDC                         | 2-WAY IDC                           |
| 18            | S/T602-103     |                      | 3-NAPAINEN IDC                    | 3-POLIG IDC                       | 3-POL IDC                         | 3-WAY IDC                           |
| 19            | S/A341-001     |                      | PIIRILEVY WIZARD                  | KRETSKORT WIZARD                  | SCHALTBRETT WIZARD                | CIRCUIT BOARD WIZARD                |
| 20            | S/A306-004     |                      | PIIRILEVY WIZARD+                 | KRETSKORT WIZARD+                 | SCHALTBRETT WIZARD+               | CIRCUIT BOARD WIZARD+               |
| 21            | S/T607-040     |                      | JUMPPERI "HYPPYL."                | JUMPER LINK                       | JUMPER LINK                       | JUMPER LINK                         |
| 21            | A50460         | M6                   | KUUSIOMUTTERI                     | SEKKANTMUTTER                     | SECHSKANTMUTTER                   | HEX NUT                             |
| 22            | B60505         | M6 DIN 125<br>4 X 18 | ALUSLEVY                          | BRICKA                            | UNTERLEGRING                      | WASHER                              |
| 23            |                |                      | PELTIRUUVI                        | SKRUV                             | SCHRAUBE                          | SCREW                               |
| 24            | S/G730-014     |                      | LÄPVIENTIERISTE                   | ISOLERING (GUMMI)                 | ISOLATION AUS GUMMI               | GROMMET                             |
| 25            | D55112         | SS 32 - 400mm        | SUOJÄSPIRAALI                     | SKYDDSPIRAL                       | DECKUNG SPIRALE                   | PROTECTION SPIRAL                   |
| 26            | S/CB/306-2-020 |                      | SÄHKÖJOHDIN                       | STRÖMLEDNING                      | STROMLEITER                       | POWER LEAD                          |
| 27            |                |                      | SÄHKÖJOHDIN                       | STRÖMLEDNING                      | STROMLEITER                       | POWER LEAD                          |
| 28            |                |                      | SÄHKÖJOHDIN                       | STRÖMLEDNING                      | STROMLEITER                       | POWER LEAD                          |
| 29            | K/WIZ/MTG/BKT  |                      | KIINNITYSJALKA                    | FÄSTDETALJ                        | SPANNGLIED                        | MOUNTING BRACKET                    |

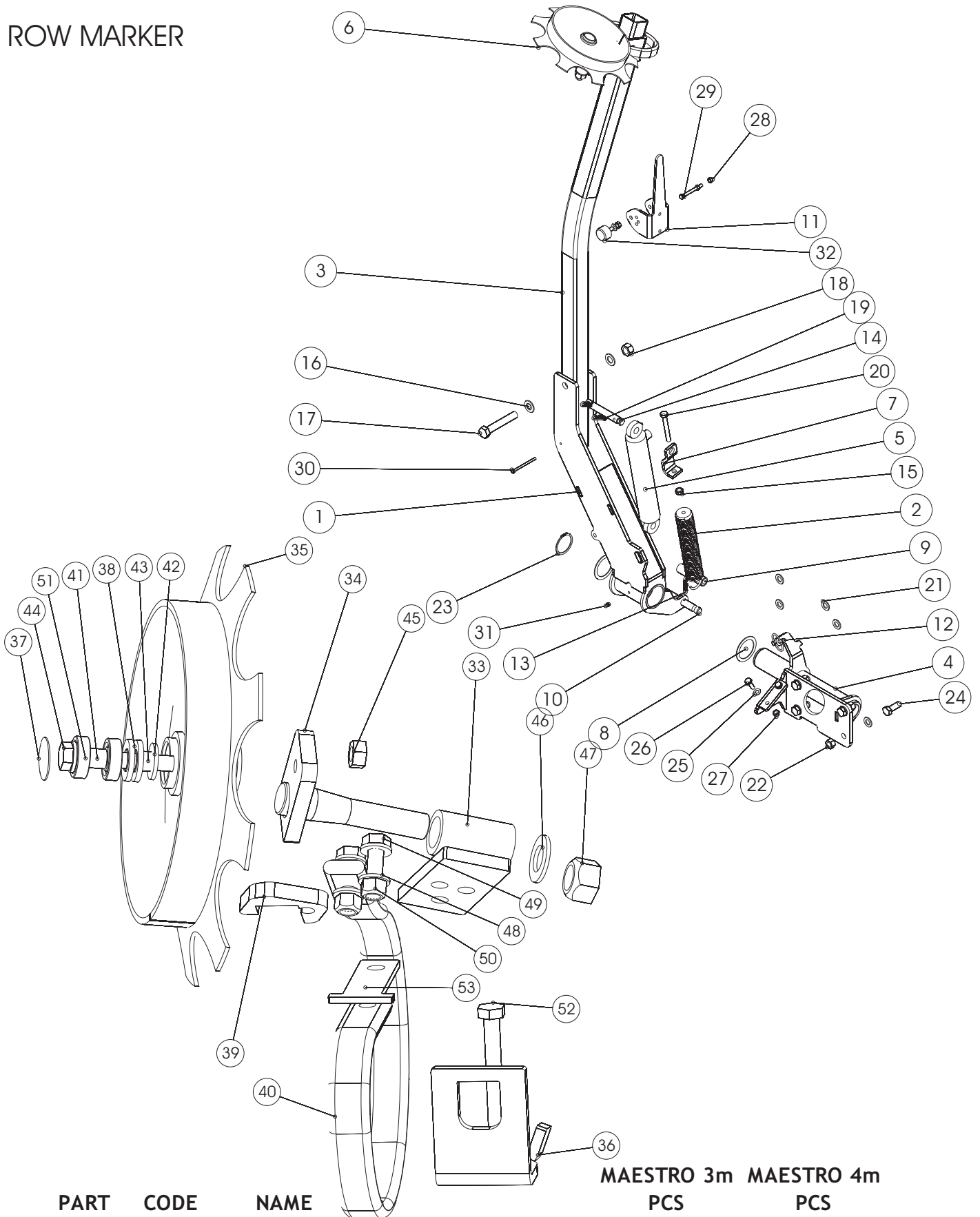
# TRAMLIN CLUTCH



| PART | CODE   | NAME               | PCS         |             |
|------|--------|--------------------|-------------|-------------|
|      |        |                    | MAESTRO3000 | MAESTRO4000 |
| 1    | 14837  | BRACKET            | 2           | 2           |
| 2    | 18009  | SELECTRIC BOX BASE | 1           | 1           |
| 3    | 17510  | BUSHING            | 2           | 2           |
| 4    | D17967 | CLUTCH             | 2           | 2           |
| 5    | 17974  | FREE FEED ROLLER   | 4           | 4           |
| 6    | 18548  | BRACKET            | 1           | 1           |



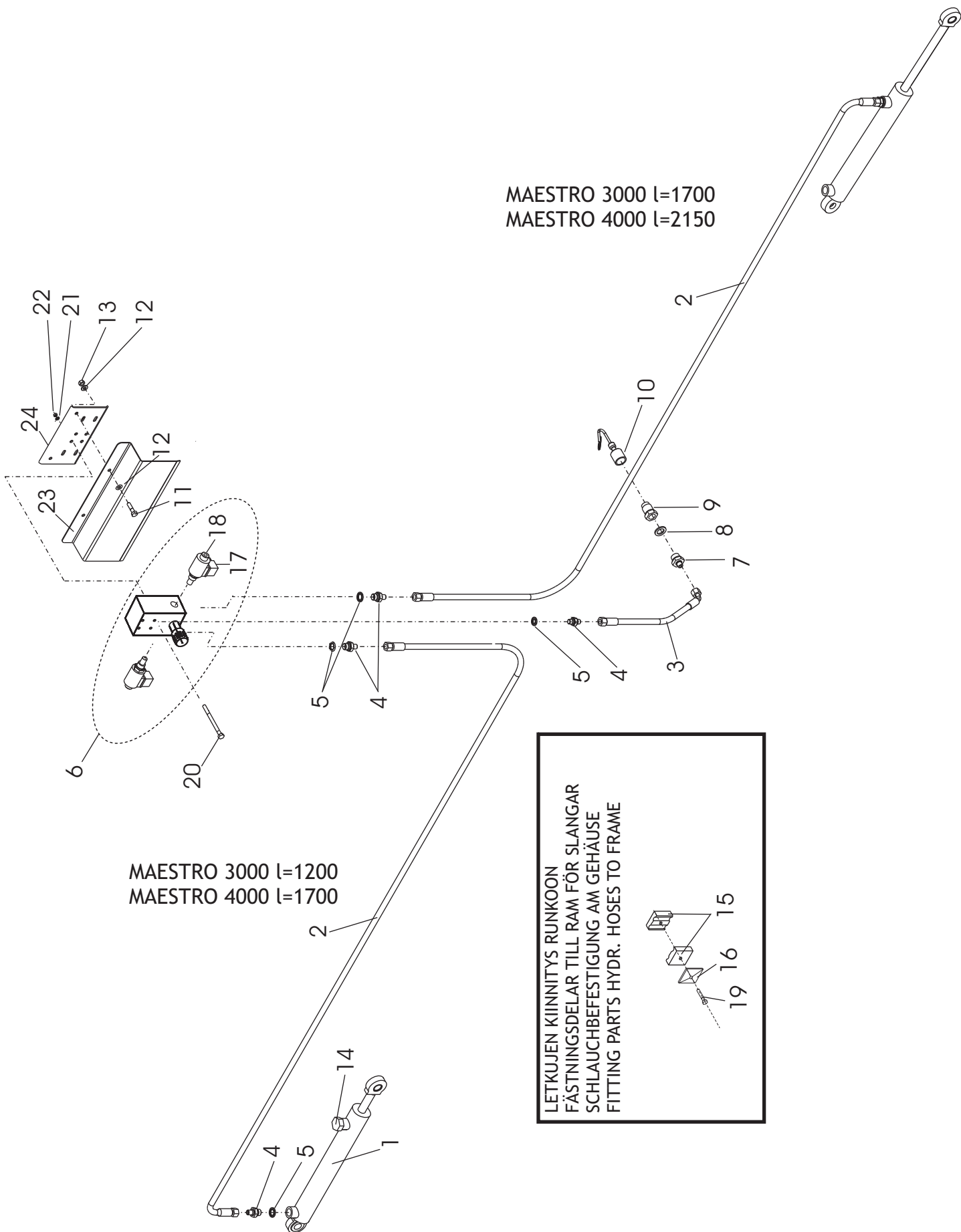
# ROW MARKER



| PART | CODE   | NAME                   | MAESTRO 3m | MAESTRO 4m |
|------|--------|------------------------|------------|------------|
|      |        |                        | PCS        | PCS        |
| 1    | 21037  | LOWER ARM LEFT WELDED  | 1          | 1          |
|      | 21043  | LOWER ARM RIGHT WELDED | 1          | 1          |
| 2    | 766600 | SPRING ASSY            | 1          | 1          |
| 3    | 21063  | UPPER ARM 3000         | 1          |            |
|      | 21038  | UPPER ARM 4000         |            | 1          |
| 4    | 21057  | HINGE LEFT             | 1          | 1          |
|      | 21046  | HINGE RIGHT            | 1          | 1          |

| PART | CODE       | NAME                         | MAESTRO 3m | MAESTRO 4m |
|------|------------|------------------------------|------------|------------|
|      |            |                              | PCS        | PCS        |
| 5    | 17617      | CYLINDER 50/40-250           | 1          | 1          |
| 6    | 20935      | MARKER HEAD ASSY LEFT        | 1          | 1          |
|      | 20830      | MARKER HEAD ASSY RIGHT       | 1          | 1          |
| 7    | 17619      | PLATE                        | 1          | 1          |
| 8    | 21050      | WASHER 80/61/2               | 2          | 2          |
| 9    | 21052      | BUSHING L=100                | 1          | 1          |
| 10   | 21051      | PIN LOWER                    | 1          | 1          |
| 11   | 21045      | STOPPER                      | 1          | 1          |
| 12   | BEC000002  | RING PIN 10X40 L=40 ZN       | 1          | 1          |
| 13   | BD0116     | PIN 5MM DIN11024 ZN          | 4          | 4          |
| 14   | 17616      | PIN UPPER                    | 1          | 1          |
| 15   | AGC111014  | NUT M12 DIN934-8 ZN          | 1          | 1          |
| 16   | B5L173024  | WASHER M20 DIN125A ZN        | 2          | 2          |
| 17   | A13929     | SCREW M20X125 8.8 DIN960 ZN  | 1          | 1          |
| 18   | AGL113014  | NUT IL M20 DIN985-8 ZN       | 1          | 1          |
| 19   | AG6113014  | NUT IL M 6 DIN985-8 ZN       | 1          | 1          |
| 20   | A0C3A1024  | SCREW M12X100 8.8 DIN933ZNC  | 1          | 1          |
| 21   | B5G102524  | WASHER M16 DIN125A ZN        | 8          | 8          |
| 22   | AGG113014  | NUT IL M16 DIN985-8 ZN       | 4          | 4          |
| 23   | BH2012F24  | SEGER RENG AKS 60X2 DIN471   | 1          | 1          |
| 24   | A0G1F1514  | SCREW M16X45 8.8 DIN933 ZN   | 4          | 4          |
| 25   | B5A0MB024  | WASHER M10 DIN125A ZN        | 3          | 3          |
| 26   | A0A151014  | SCREW M10X35 8.8 DIN933 ZN   | 2          | 2          |
| 27   | AGA113014  | NUT IL M10 DIN985-8 ZN       | 3          | 3          |
| 28   | A50711     | NUT M8 Nyloc 985 Zn          | 2          | 2          |
| 29   | A083A1880  | SCREW M8X80 8.8 Din931 Zn    | 1          | 1          |
| 30   | A062A1114  | SCREW M6X90 8.8 DIN931 ZN    | 1          | 1          |
| 31   | BJ6500000  | NIPPLE M 8*1.25 N:o 507      | 1          | 1          |
| 32   | D40001544  | RUBBER STOPPER 48001 MAR-CON | 1          | 1          |
| 33   | 21039      | ADJUSTMENT PART              | 1          | 1          |
| 34   | 18234      | ADJUSTMENT PLATE             | 1          | 1          |
| 35   | 17785      | DISC                         | 1          | 1          |
| 36   | 18425      | SPRING BRACKET               | 1          | 1          |
| 37   | 131324000  | CAP                          | 1          | 1          |
| 38   | CN2Z00200  | Z-SEALING Z002               | 2          | 2          |
| 39   | 21178      | LOCK PART                    | 1          | 1          |
| 40   | D30000481  | S-SPRING M-87 22897S         | 1          | 1          |
| 41   | D131326000 | BUSHING 4-2659               | 1          | 1          |
| 42   | 131328000  | SPACER                       | 1          | 1          |
| 43   | D131327000 | BUSHING 4-2658               | 1          | 1          |
| 44   | A0C2G1514  | SCREW M12X80 10.9 DIN931ZN   | 1          | 1          |
| 45   | AGC111014  | NUT M12 DIN934-8 ZN          | 1          | 1          |
| 46   | B5L173024  | WASHER M20 DIN125A ZN        | 1          | 1          |
| 47   | AGL113014  | NUT IL M20 DIN985-8 ZN       | 1          | 1          |
| 48   | B5C0R2024  | WASHER M12 DIN125A ZN        | 6          | 6          |
| 49   | A0C1A1014  | SCREW M12X40 8.8 DIN933 ZN   | 2          | 2          |
| 50   | AGC113014  | NUT IL M12 DIN985-8 ZN       | 3          | 3          |
| 51   | CE6201000  | BEARING 6201                 | 2          | 2          |
| 52   | A0C3L1514  | SCREW M12X110 8.8 Din 931Zn  | 1          | 1          |
| 53   | 18426      | PLATE                        | 1          | 1          |

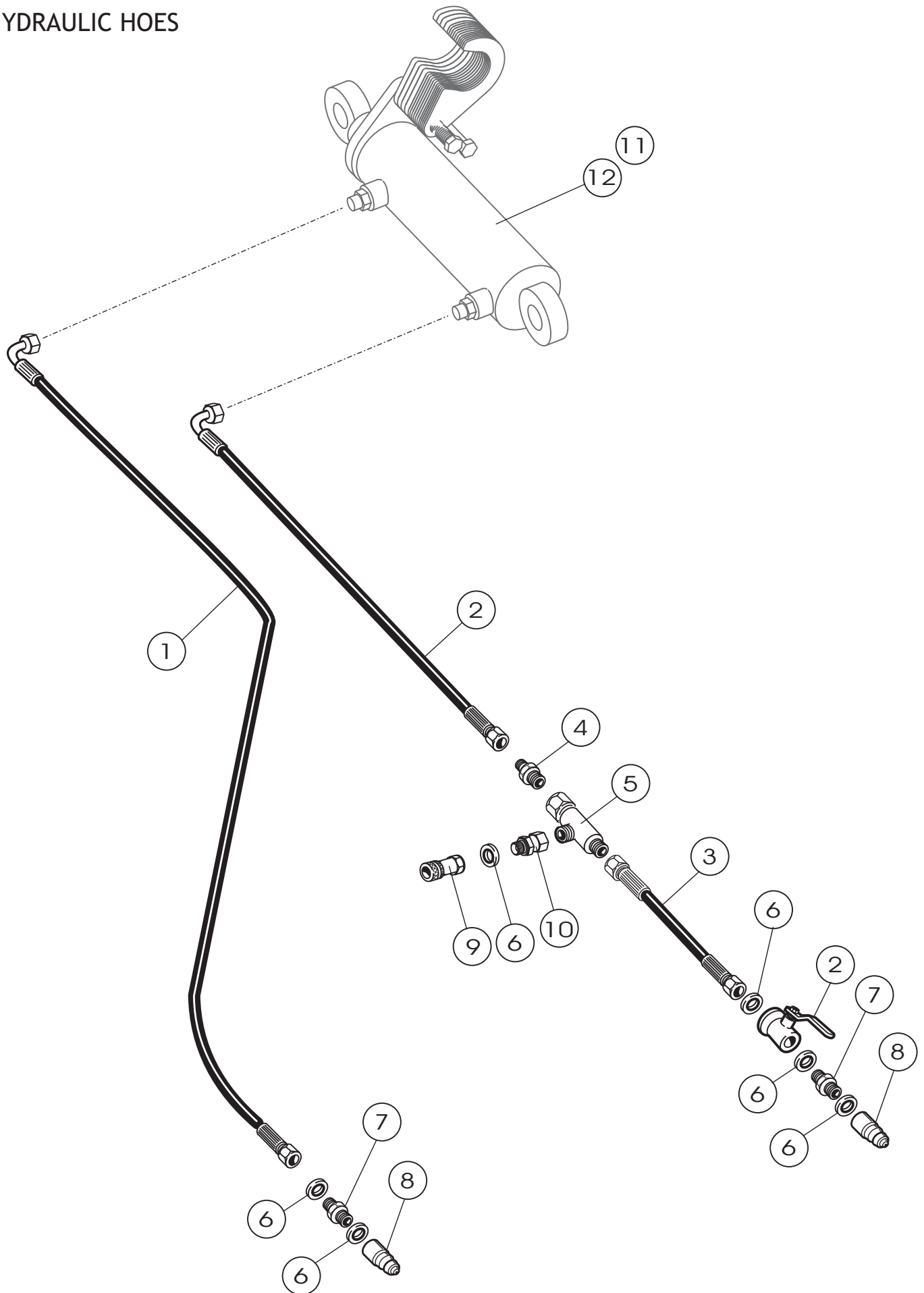
# TRACK MARKER HYDRAULICS



LETKUJEN KIINITYYS RUNKOON  
 FÄSTINGSDELAR TILL RAM FÖR SLANGAR  
 SCHLAUCHBEFESTIGUNG AM GEHÄUSE  
 FITTING PARTS HYDR. HOSES TO FRAME

| PART | CODE            | NAME                        | PCS         |             | PCS |
|------|-----------------|-----------------------------|-------------|-------------|-----|
|      |                 |                             | MAESTRO3000 | MAESTRO4000 |     |
| 1    | 17617           | CYLINDER                    | 2           |             | 2   |
| 2    | D17682          | HYDR. HOSE ASEMBLED L=1200  | 1           |             | 1   |
|      | D18176          | HYDR. HOSE ASSEMBLED L=2150 | 1           |             | 1   |
| 3    | D17683          | HYDR. HOSE ASSEMBLED L=1700 | 1           |             | 1   |
| 4    | D15554B         | HYDR. HOSE ASSEMBLED L=400  | 5           |             | 5   |
| 5    | DI5292          | DOUBLE NIPPLE 202-6-8       | 5           |             | 5   |
| 6    | D30000211       | USIT SEAL 3/8"              | 1           |             | 1   |
| 7    | D15554A         | VALVE                       | 1           |             | 1   |
| 8    | D30000212       | NIPPLE 1/2"                 | 1           |             | 1   |
| 9    | C23072-08       | USIT SEAL 1/2"              | 1           |             | 1   |
| 10   | TFA-08M         | FAST CONNECTOR, MALE 1/2"   | 1           |             | 1   |
| 11   | M8X30           | CAP                         | 2           |             | 2   |
| 12   | M8              | HEX SCREW                   | 4           |             | 4   |
| 13   | M8              | WASHER                      | 4           |             | 4   |
| 14   |                 | HEX NUT                     | 4           |             | 4   |
| 15   | D6C214          | PLUG                        | 2           |             | 2   |
| 16   | A050L8024       | DOUBLE BRACKET              | 1           |             | 1   |
| 17   | HJKOS-T57290090 | COVER PLATE CF2-U           | 1           |             | 1   |
| 18   | HJKOS-T57293355 | SOLENOID                    | 2           |             | 2   |
| 19   | A02810          | 2/2 CARTRIDGE VALVE         | 2           | 2           | 2   |
| 20   | A062A1014       | SCREW M6X25                 | 1           |             | 1   |
| 21   | M6              | HEX SCREW M6X80             | 4           |             | 4   |
| 22   | M6 IL           | WASHER                      | 4           |             | 4   |
| 23   | 15544           | HEX NUT                     | 4           |             | 4   |
| 24   | 17780           | COVER                       | 1           |             | 1   |
|      |                 | BRACKET                     | 1           |             | 1   |

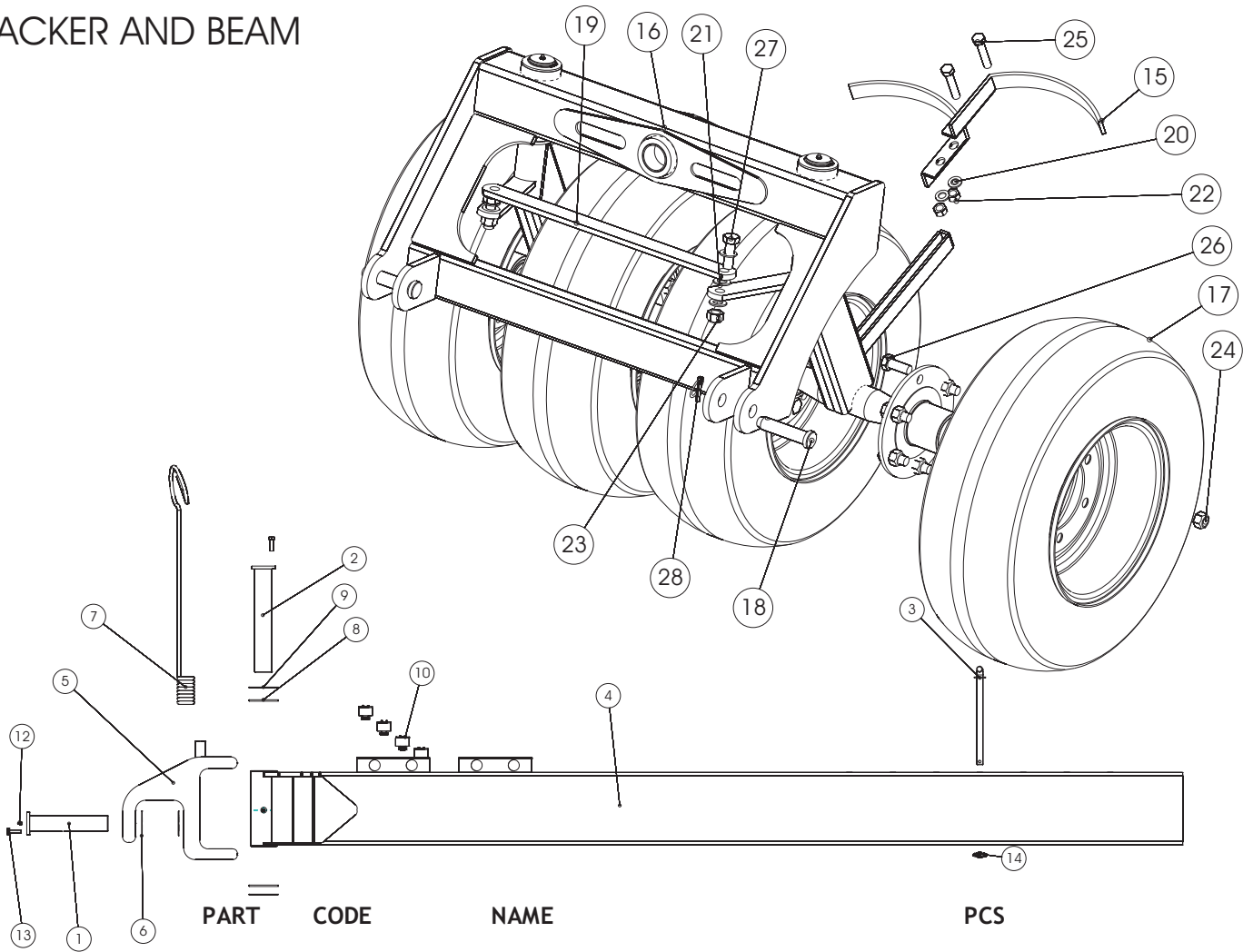
# HYDRAULIC HOES





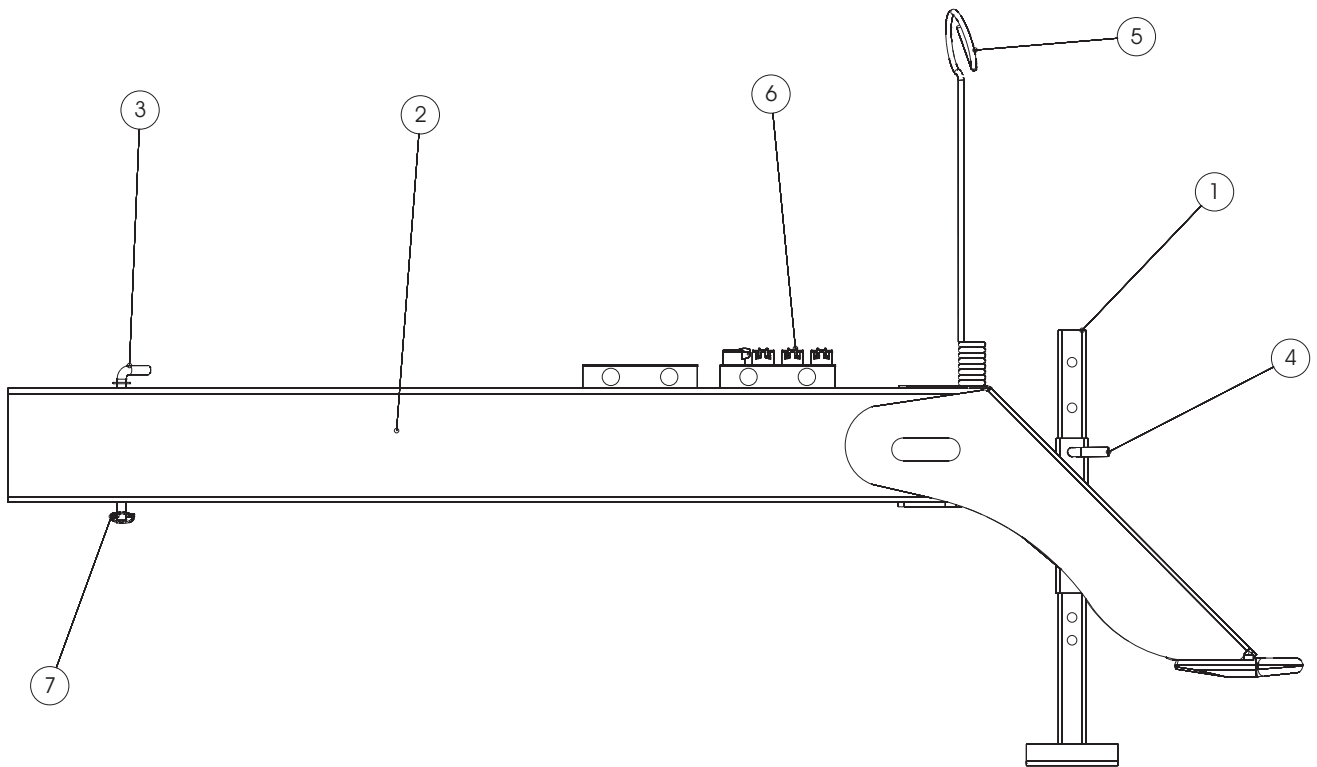
| PART | CODE      | NAME                        | PCS         |              |
|------|-----------|-----------------------------|-------------|--------------|
|      |           |                             | MAESTRO3000 | MAESTRO40001 |
| 1    | D17684    | HOSE L=7200                 | 1           | 1            |
| 2    | D17686    | HOSE L=1200                 | 1           | 1            |
| 3    | D17875    | HOSE L=5600                 | 1           | 1            |
| 4    | 202-04-08 | CHOKE NIPPLE                | 1           | 1            |
| 5    | 747-08    | L-NIPPLE                    | 1           | 1            |
| 6    | D30000212 | USIT                        | 6           | 6            |
| 7    | 705-08-08 | DOUBLE NIPPLE               | 2           | 2            |
| 8    | NV-08M    | QUICK COUPLING MALE         | 2           | 2            |
| 9    | NV-08F    | QUICK COUPLING FEMALE       | 1           | 1            |
| 10   | 705-08-08 | CONNECTOR NIPPLE            | 1           | 1            |
| 11   | 17867     | CYLINDER ASSEMBLED          | 1           | 1            |
| 12   | 17366     | CYLINDER WELDED (NO LAMELS) | 1           | 1            |

# PACKER AND BEAM



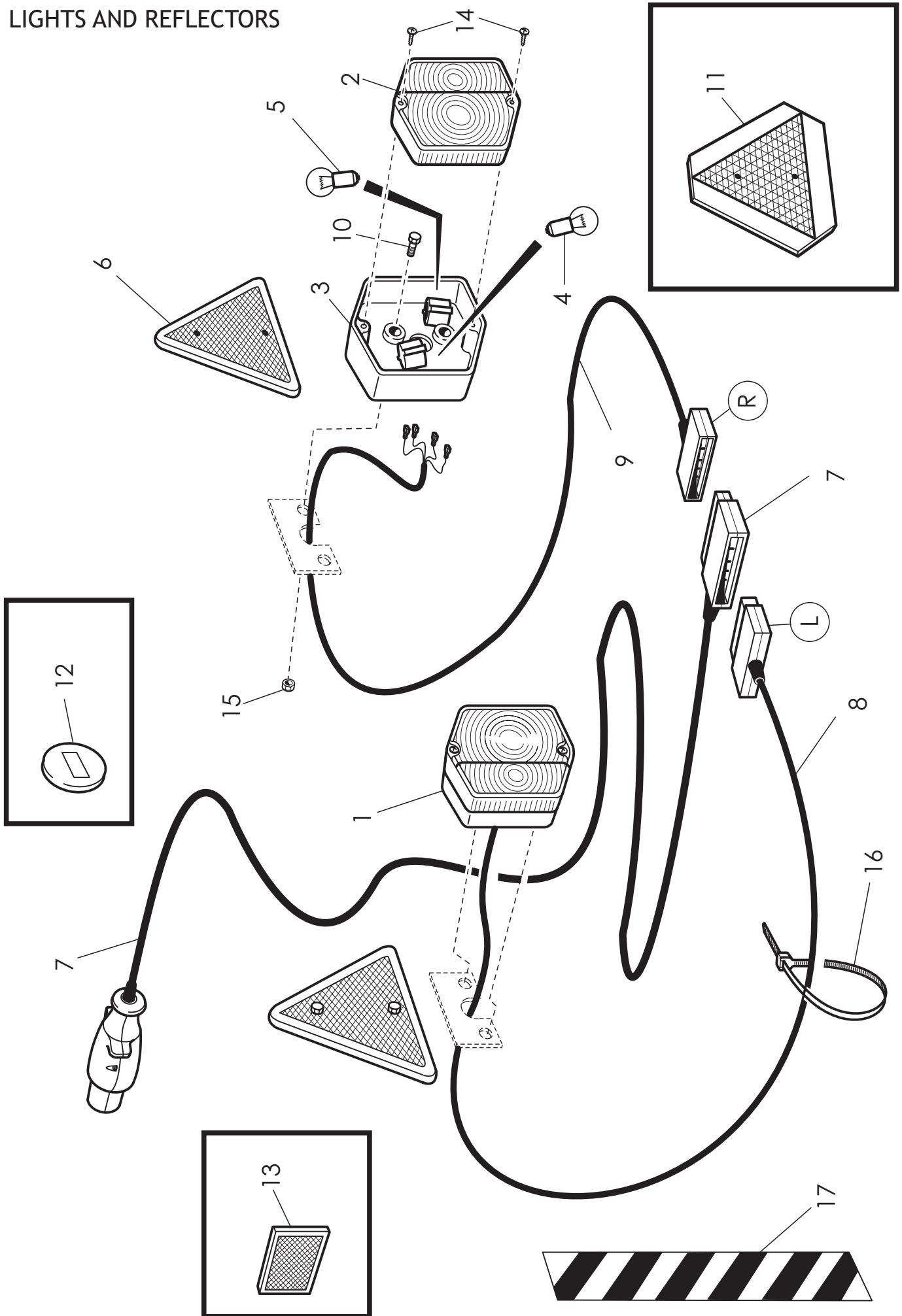
| PART | CODE      | NAME                         | PCS |
|------|-----------|------------------------------|-----|
| 1    | 20801     | PIN                          | 1   |
| 2    | 20802     | PIN                          | 1   |
| 3    | 20804     | PIN                          | 1   |
| 4    | 20809     | DRAWBAR                      | 1   |
| 5    | 20811     | PIVOT PART                   | 1   |
| 6    | 14858     | BEARING WASHER               | 2   |
| 7    | 18471     | HOLDER                       | 1   |
| 8    | 18568     | SPACER 5MM                   | 2   |
| 9    | 18641     | SPACER 1.5 MM                | 2   |
| 10   | D24323    | BRACKET AM15356              | 4   |
| 12   | BJ6500000 | NIPPLE M 8*1.25 N:O 507      | 2   |
| 13   | A0C1A1014 | SCREW M12X40 8.8 Din933 Zn   | 2   |
| 14   | BE8600002 | RING PIN 6X40 L=40 ZN        | 1   |
| 15   | 15914     | SCRAPER                      | 4   |
| 16   | 20812     | PACKER PRE-ASSY              | 1   |
| 17   | D30019    | TYRE 10.0/75-15.3/10         | 4   |
| 18   | 14861     | PIN                          | 2   |
| 19   | 16068     | ROD                          | 1   |
| 20   | B5G102524 | WASHER M16 DIN125A ZN        | 4   |
| 21   | B5L173024 | WASHER M20 DIN125A ZN        | 6   |
| 22   | AGG113014 | NUT IL M16 DIN985-8 ZN       | 4   |
| 23   | A51902    | NUT IL M20*1.5 Din960 ZN     | 2   |
| 24   | A51900    | NUT M20X1.5 DIN934-8 ZN      | 24  |
| 25   | AGG113014 | NUT IL M16 DIN985-8 ZN       | 4   |
| 26   | A0L1F1214 | SCREW M20X1.5X50 8.8 DIN961Z | 24  |
| 27   | A0L201524 | SCREW M20X60 8.8 DIN933 ZN   | 2   |
| 28   | BE8600002 | RING PIN 6X40 L=40 ZN        | 2   |

# BASIC TOW BAR



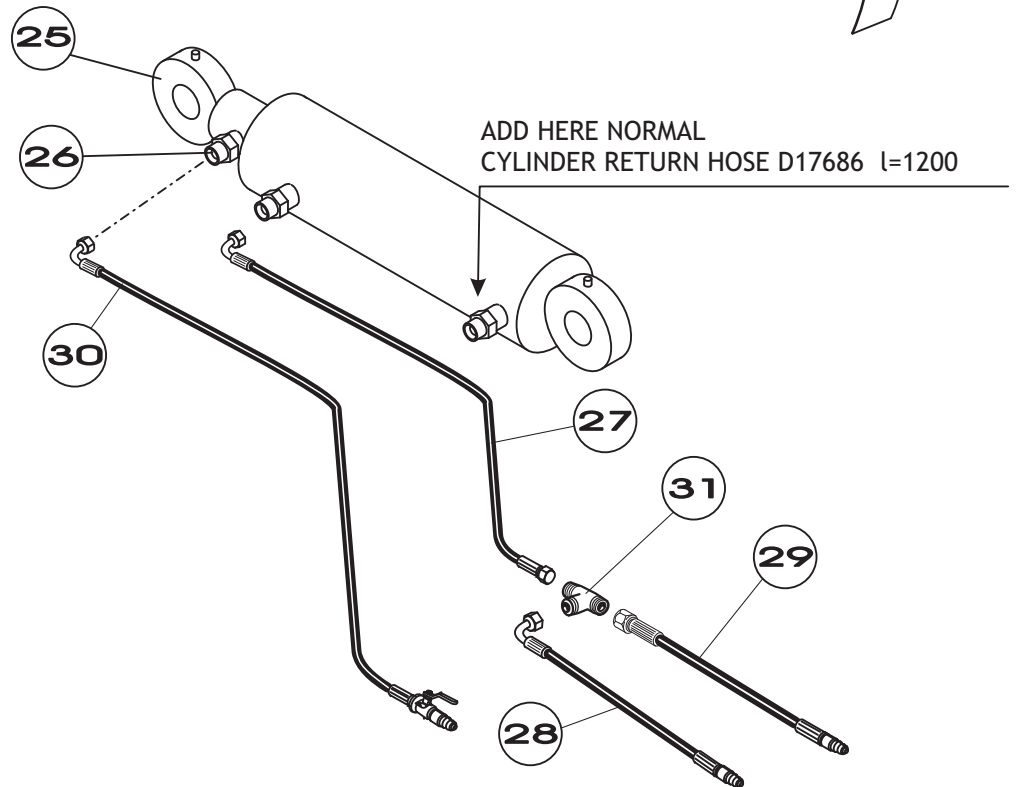
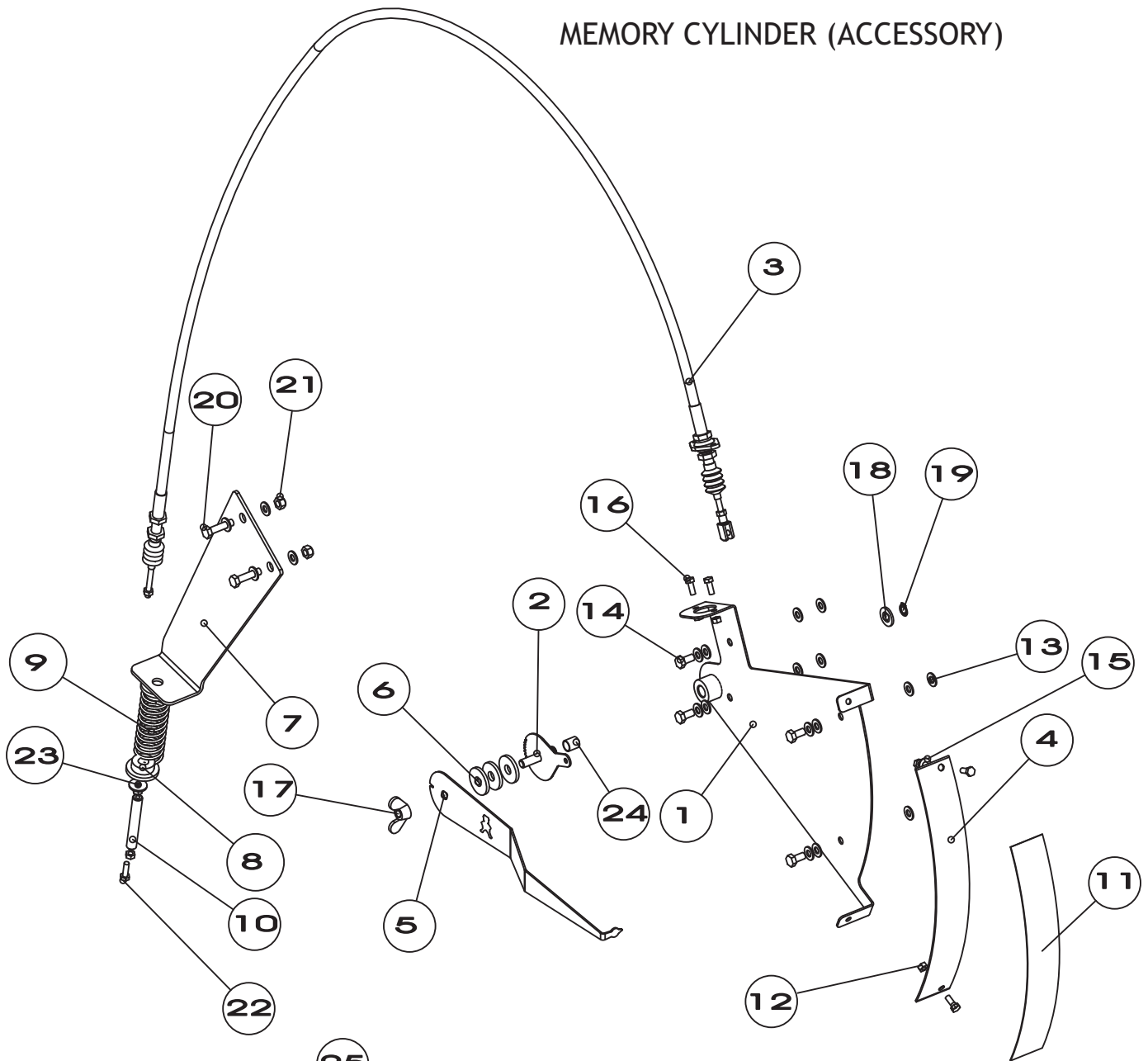
| PART | CODE      | NAME                  | PCS |
|------|-----------|-----------------------|-----|
| 1    | 14506     | SUPPORT LEG           | 1   |
| 2    | 20724     | DRAWBAR               | 1   |
| 3    | 20804     | PIN                   | 1   |
| 4    | 17605     | PIN                   | 1   |
| 5    | 18471     | HOLDER                | 1   |
| 6    | D24323    | BRACKET AM15356       | 4   |
| 7    | BE8600002 | RING PIN 6X40 L=40 ZN | 2   |

# LIGHTS AND REFLECTORS



| PART | CODE       | NAME                       | PCS<br>MAESTRO3000&4000 |
|------|------------|----------------------------|-------------------------|
| 1    | 141130-000 | REAR LIGHT ASSEMBLED       | 2                       |
| 2    | 11301/ L   | REAR LIGHT "GLASS"         | 2                       |
| 3    |            | REAR LIGHT BOTTOM          | 2                       |
| 4    | D40001693  | 12 V / 5 W BULB            | 2                       |
| 5    | D40001684  | 12V / 21 W BULB            | 2                       |
| 6    | D50000385  | REFLECTOR TRIANGLE         | 2                       |
| 7    | CP4488     | MAIN WIRING HARNESS 6 m    | 1                       |
| 8    | CP4491     | WIRING HARNESS LEFT 4.8m   | 1                       |
| 9    | CP4491     | WIRING HARNESS RIGHT 4.8 M | 1                       |
| 10   |            | HEX SCREW M 6×20           | 4                       |
| 11   | E73261     | SLOW VEHICLE SIGN TRIANGLE | 1                       |
| 12   | D50000395  | FRONT REFLECTOR WHITE      | 2                       |
| 13   | D50000396  | SIDE REFLECTOR YELLOW      | 2                       |
| 14   |            | SCREW REAR LIGHT           | 4                       |
| 16   | E73635     | CABLE TIE                  | 10                      |
| 17   | CF2037     | OVER-WIDE MACHINE WARNING  | 4                       |

# MEMORY CYLINDER (ACCESSORY)



| PART CODE | NAME      | PCS                           |    |
|-----------|-----------|-------------------------------|----|
| 1         | 18381     | FRAME PLATE WELDED            | 1  |
| 2         | 18383     | TURN PLATE WELDED             | 1  |
| 3         | D18391    | CABLE FOR POINTER             | 1  |
| 4         | 18345     | CURVE PLATE FOR POINTER       | 1  |
| 5         | 18343     | POINTER                       | 1  |
| 6         | 14987     | RUBBER WASHER 4*35/12         | 3  |
| 7         | 18342     | WIRE CABLE HOLDER             | 1  |
| 8         | 18371     | BUSHING SPRING                | 2  |
| 9         | D51111    | SPRING 36.5*100/3.2 4-51111   | 1  |
| 10        | 18386     | SPIN PIN FOR WIRE CABLE       | 1  |
| 11        | CF18417   | STICKER FOR POINTER           | 1  |
| 12        | AG6111014 | 6-NUT M 6 DIN934-8 ZN         | 6  |
| 13        | B60649    | WASHER M 8 DIN125A A2 AISI    | 20 |
| 14        | A04220    | 6-SCREW M8X16 A2-80 DIN 933 A | 4  |
| 15        | B560E1524 | WASHER M 6 DIN125A ZN         | 2  |
| 16        | A060G1024 | 6-SCREW M6X16 8.8 DIN 933 ZN  | 4  |
| 17        | AGA11J014 | WING NUT M10 DIN315 ZN        | 1  |
| 18        | B5C0R2024 | WASHER M12 DIN125A ZN         | 1  |
| 19        | BH0C10011 | SEGER RING AKS 12X1 DIN471    | 1  |
| 20        | A08151514 | 6-SCREWI M8X35 8.8 DIN 933 ZN | 2  |
| 21        | A50710    | 6-NUT IL M8 A2 DIN985 AISI    | 2  |
| 22        | A060L1524 | 6-SCREWI M6X20 8.8 DIN 933 ZN | 1  |
| 23        | B560N1524 | WASHER M 6 DIN440R ZN         | 1  |
| 24        | CV03L1215 | DYMET BEARING 701 12/14/15    | 1  |
| 25        | 18310     | MEMORY CYLINDER               | 1  |
| 26        | D30000380 | DOUBLE NIPPLE 1/2" / 1/2"     | 3  |
| 27        | D18419    | HOSE l=6200                   | 1  |
| 28        | D18420    | HOSE l=1000 ANGLE             | 1  |
| 29        | D18421    | HOSE l=1000 STRAIGHT          | 1  |
| 30        | D18748    | HOSE l=7650                   | 1  |
| 31        | D30000379 | T-CONNECTOR 712-08            | 1  |

