

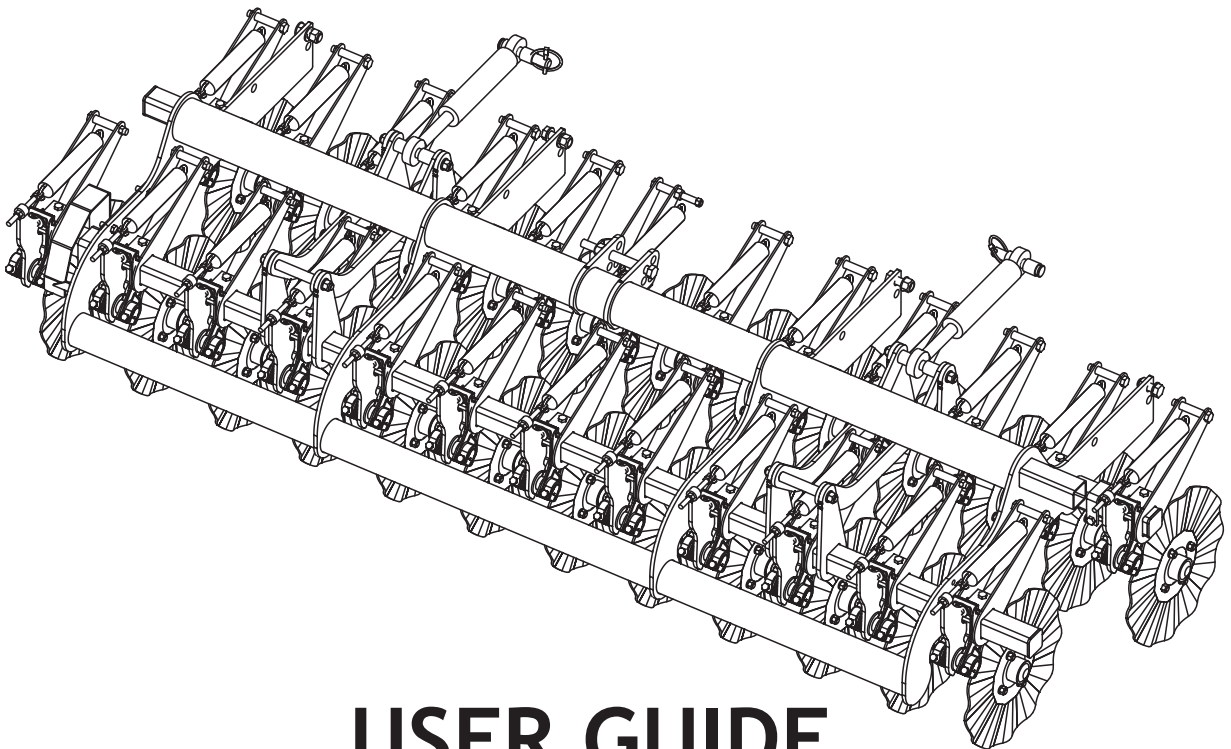
Junkkari


MAESTRO

³⁰⁰⁰
MAESTRO

⁴⁰⁰⁰
MAESTRO

PRE-TILLER WITH CORRUGATED DISKS



USER GUIDE SPARE PARTS CATALOGUE

EAA08_EN

Junkkari Oy
62375 YLIHÄRMÄ FINLAND
TEL. +358-(0)6-4835111
FAX +358-(0)6-4835295
e-mail: junkkari@msk.fi
Internet: www.junkkari.fi

ENGLISH 

CONTENTS

DEAR CUSTOMER..... 2
 TECHNICAL SPECIFICATIONS..... 2
 PURPOSE OF USE..... 3
 OPERATING PRINCIPLE..... 3
 DELIVERY PACKAGE..... 3
 INSTALLATION..... 4
 USE..... 5
 SPARE PARTS CATALOGUE..... V1

DEAR CUSTOMER

We thank you for your trust and wish you the best success in your work. We ask you to familiarize yourself with this user guide, because complete understanding of the accessory, correct adjustments and careful maintenance guarantee user safety and continued operation of the device on busy work days.

It is important to understand every section in this guide and to follow the instructions. In unclear cases you should contact the seller of the machine.

We hope that after you have read the user guide you will return the signed warranty card to the factory within 14 days of the day of delivery.



WARNING!

This user guide is meant as an appendix to the Junkkari Maestro user guide.

Sections:

- 4 SAFETY INSTRUCTIONS
- 6.2 LIMITATIONS OF USE AND FORBIDDEN USES
- 8 TRANSPORT, HANDLING AND STORAGE OF THE MACHINE
- 9.1 PUTTING THE MACHINE IN WORKING ORDER
- 9.5 DISPOSING OF PACKAGES
- 16 TROUBLESHOOTING
- 17 WITHDRAWAL FROM ACTIVE USE
- 18 TERMS OF GUARANTEE
- 19 SCOPE OF LIABILITY

as such pertain also to a separate pre-tiller.

Before installation and use familiarize yourself with the corresponding instructions of the sowing fertilizer.

TECHNICAL SPECIFICATIONS

	MAESTRO 3000	MAESTRO 4000
Working width, cm	300	400
Cutter disks, assembly	24	32
Row spacing, cm	12.5	12.5
Weight, kg	660	880



WARNING SIGN

The user guide uses this sign always when there is a danger to the user or to other people.

In addition, the sign is used when there is a danger to the environment or property.

PURPOSE OF USE

The pre-tiller equipped with corrugated disks is meant as cutter disk set in direct sowing when the Junkkari Maestro's own coulter weight is not enough to bury the seed and fertilizer deep enough. If the pre-tiller is installed later, you must ensure that the cutter disks and coulters are precisely on the same line, because the purpose of the cutter disks is to make a slit for the coulters travelling behind it.

The pre-tiller is not recommended to be used with a packer, because in this case the tractor weight cannot be moved to weigh on the tiller. Therefore use a normal tow bar and connect it to the tractor towing hook. The tiller has been equipped with hydraulics cylinders with which you can raise or lower the tiller disks, for example. The actual weighting takes place with an adjustable spring which has been adjusted to a position suitable for most machines. When necessary, the adjustment can be changed.

The machine is suitable only for the Junkkari Maestro sowing fertilizers.

With other applications ask a specialist for advice.

OPERATING PRINCIPLE

The purpose of the cutter disk set is to help the coulters to penetrate the seedbed when the coulters' own pressure is not enough.

The cutter disks are corrugated so that they crumb down the slit they opened thus helping the covering of seed and fertilizer particularly in moist environments.

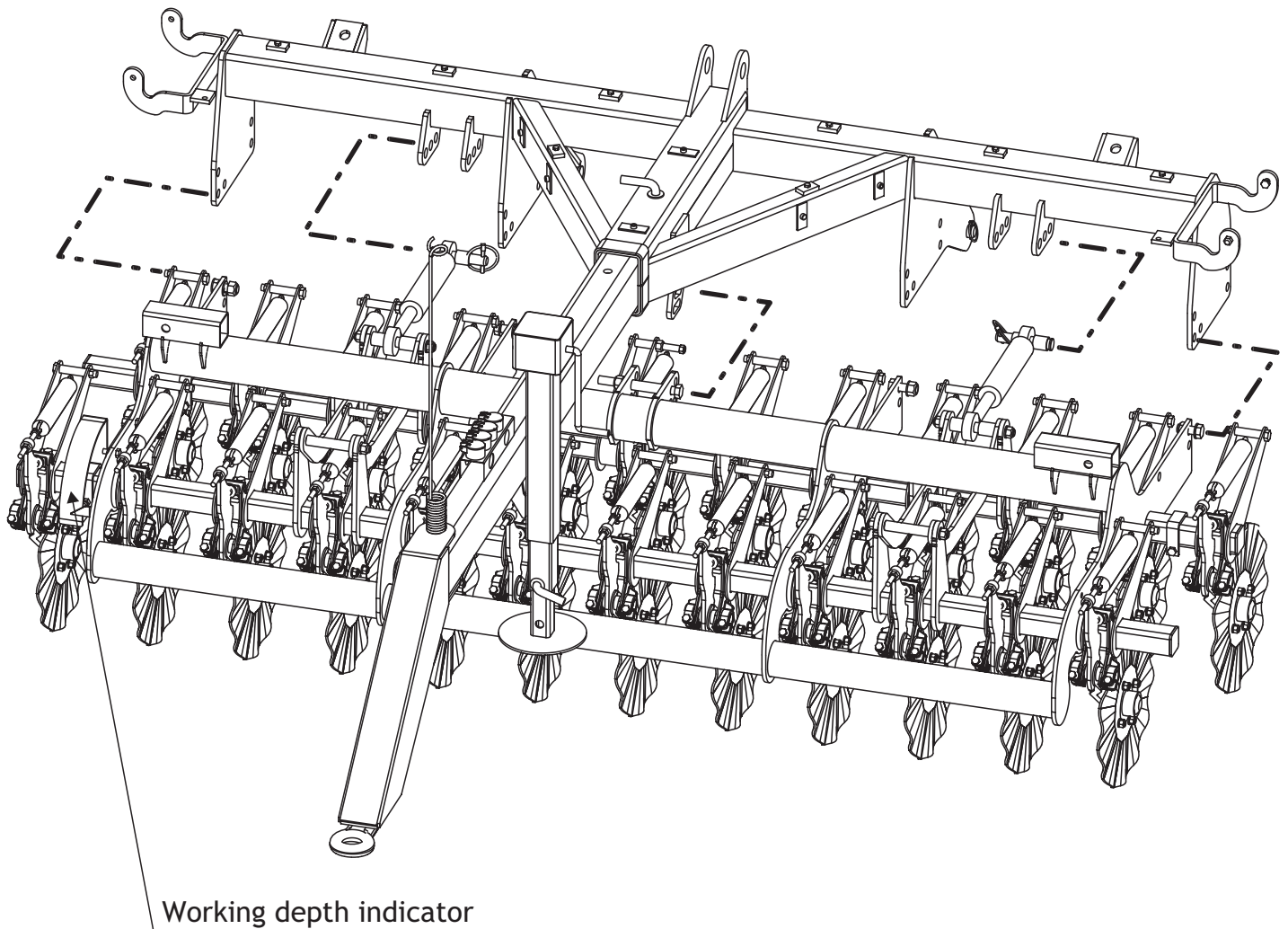
DELIVERY PACKAGE

	Maestro 3000		Maestro 4000	
-Cutter disk set	1	pcs	1	pcs
-Hydraulics cylinders	2	pcs	2	pcs
-Hydraulics hoses	4	pcs	4	pcs
-Scale assembled	1	pcs	1	pcs
-Meter hand	1	pcs	1	pcs
-User guide	1	pcs	1	pcs

INSTALLATION

If the tiller is installed later, it requires a minimum of two people and also a suitable and safe lifting device.

The tiller is installed in the brackets in the pulling device according to the pictures below, and attached in place with the M20*50 screws and M20 nuts. There are 4 pcs of these screws and nuts. In addition, the tiller is attached from the middle with an M20*200 screw and a nut. Two cylinders are attached with mounting pins.

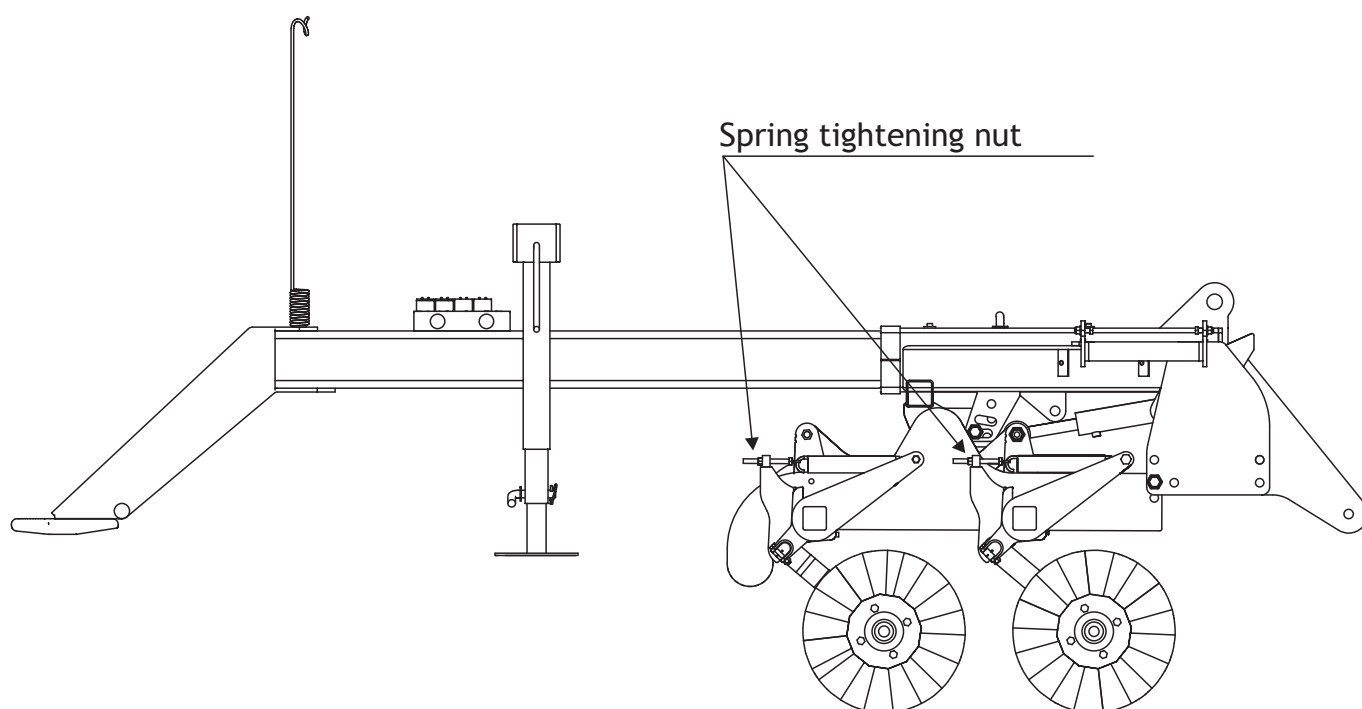


USE

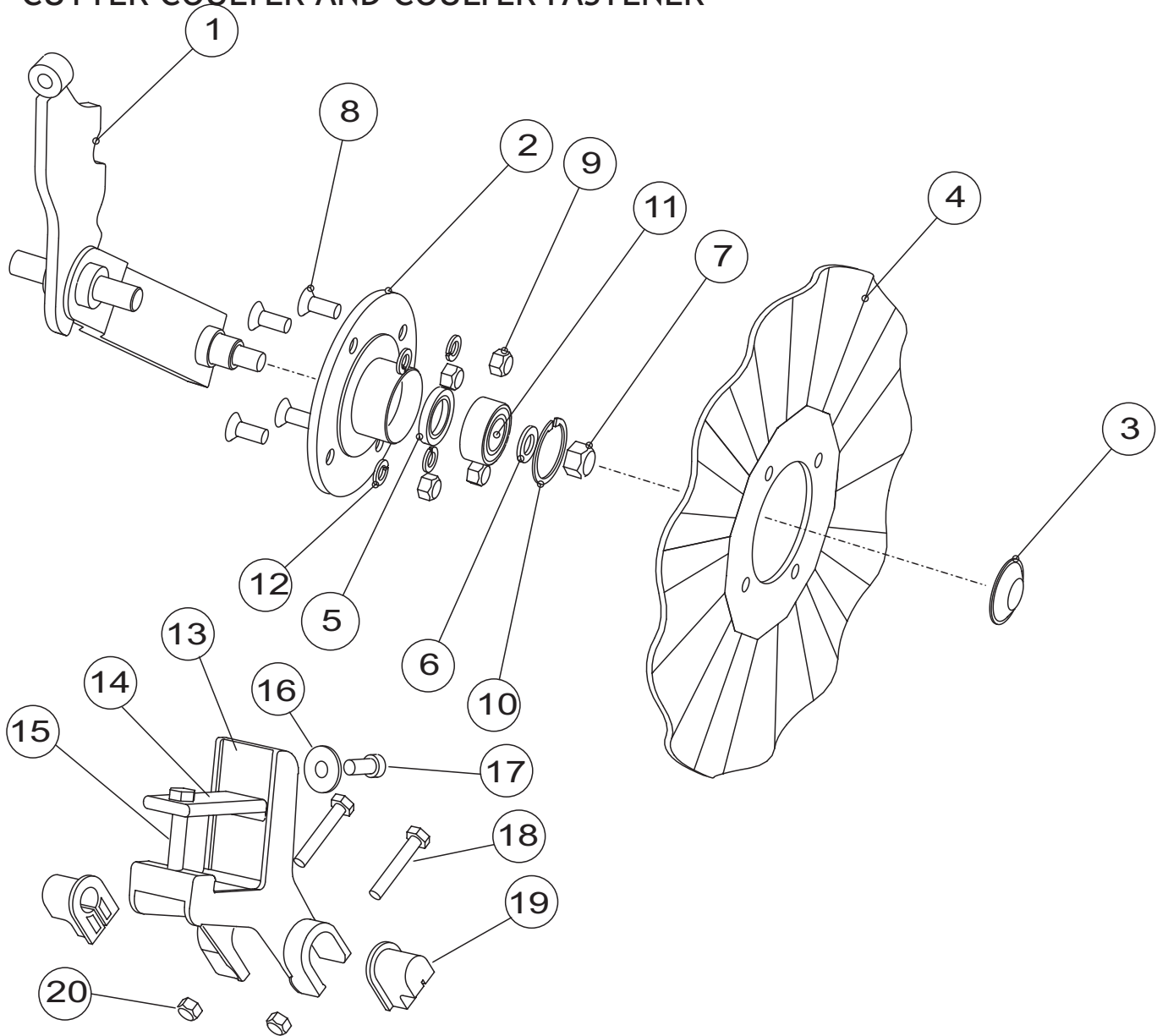
The ideal cutter disk working depth is the same as the working depth of the sowing coulters. The adjustment of the work depth and weighing at the same time takes place with the help of the hydraulic cylinders.

The weighing of cutter disks takes place in two ways: with hydraulic cylinders and spring leverage. If you cannot reach a sufficient work depth by weighting with the hydraulic cylinders, you have to tighten the springs.

In tight turns on very hard soil it is good to lessen the load on the cutter disk set. It is easy to return to the normal working depth with the help of the indicator in the device.

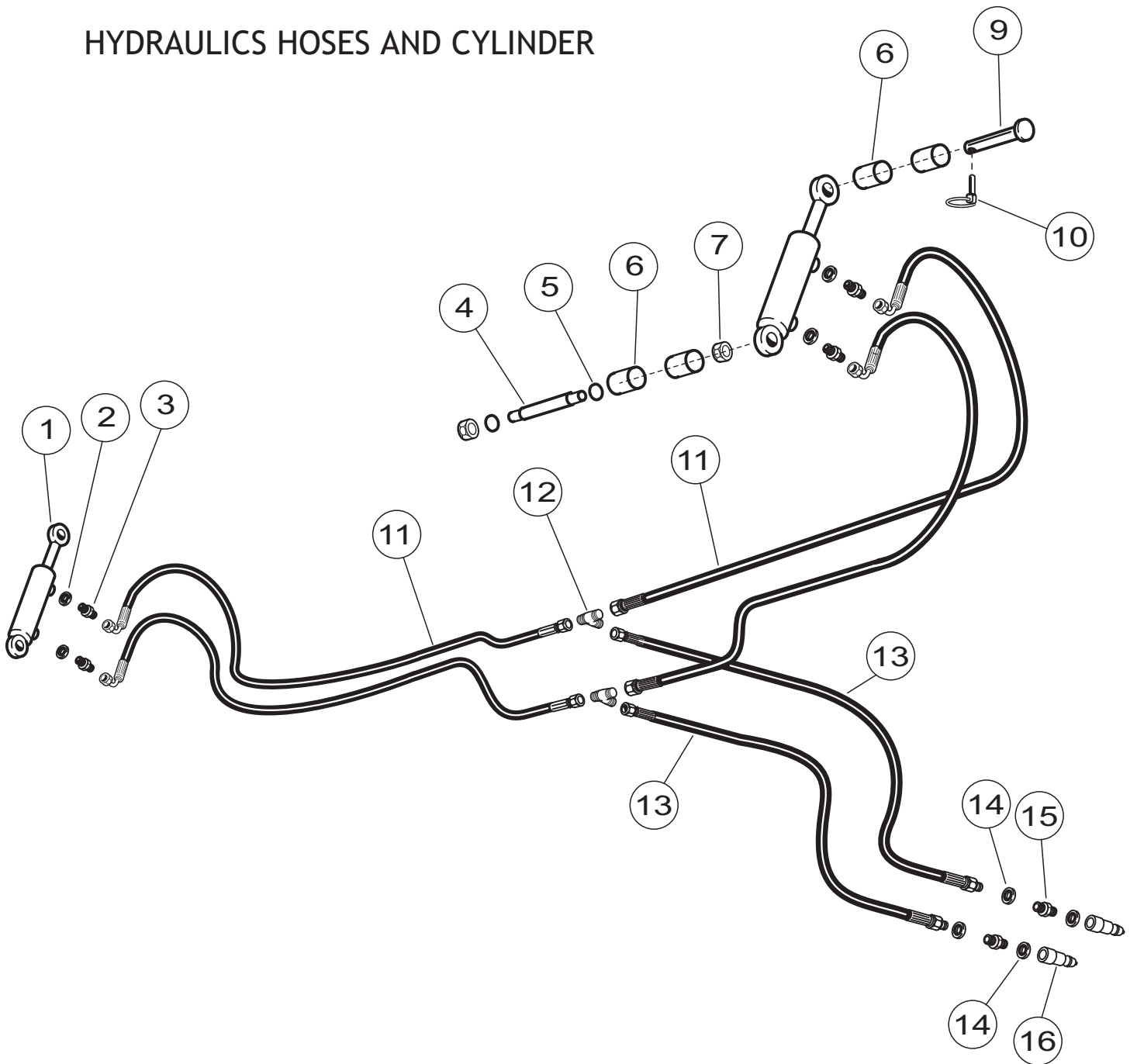


CUTTER COULTER AND COULTER FASTENER

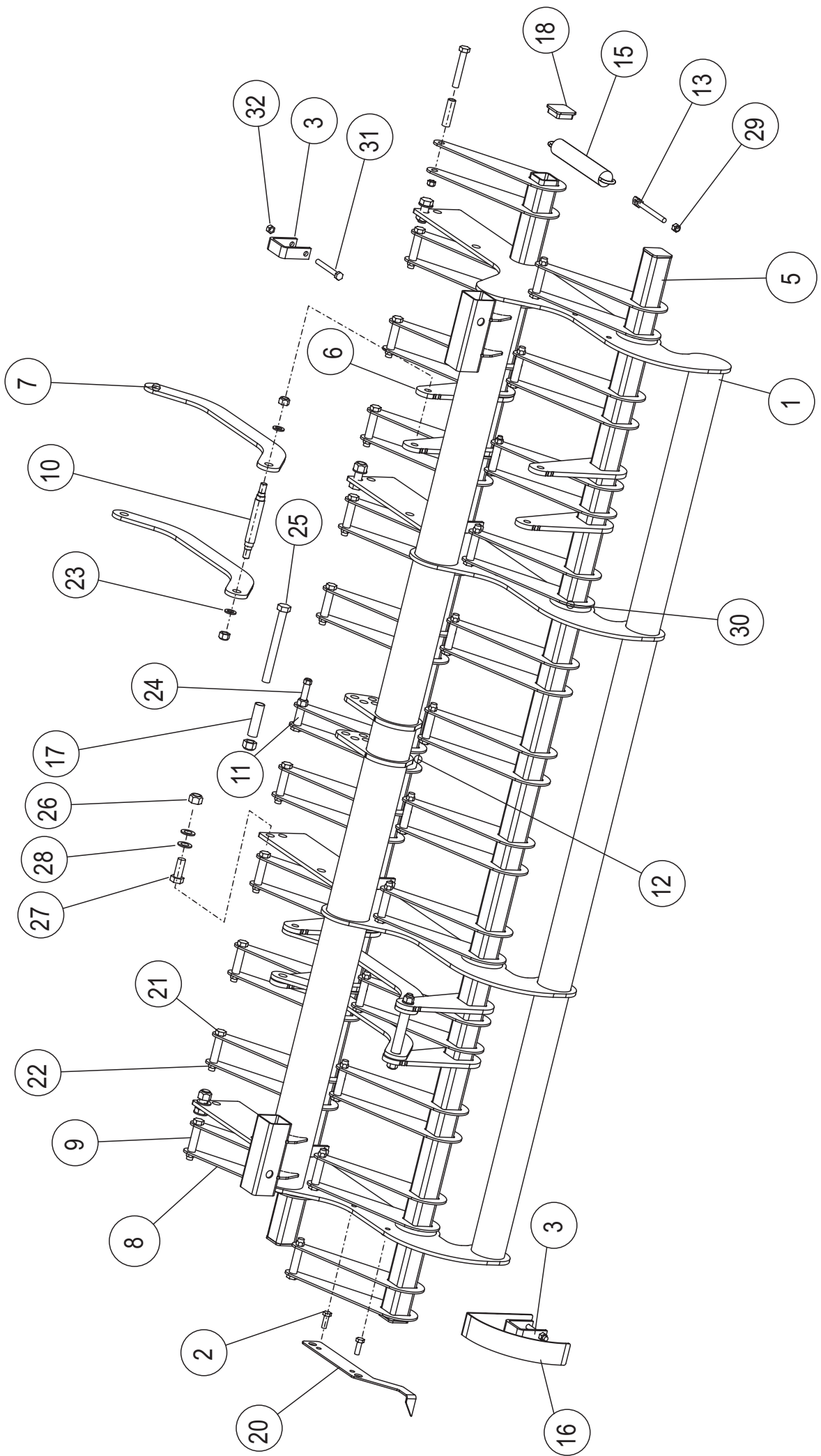


Part	Code	Label	Maestro 3000 PCS	Maestro 4000 PCS
1	17434	SHAFT TO CORRUGATED TILLER	24	32
2	17256	TERMINAL	24	32
3	17385	PROTECTIVE SOCKET	24	32
4	D17255	CORRUGATED DISK	24	32
5	D49001	STE FA 30*47*7	24	32
6	B5G102524	BED-PLATE M16	24	32
7	AGG113014	6 NUT IL M16	24	32
8	A0C0T4524	M12x30	96	128
9	AGC113014	HEX NUT IL M12	96	128
10	BH1N20021	SEGER RING 52X2	24	32
11	Ce3205	ANGULAR CONTACT BALL BEARING 3205A 2 RS	24	32
12	B5C0M2514	SPRING BED-PLATE M12	96	128
13	17118	COULTER FASTENER	24	32
14	17576	FASTENER ROD	24	32
15	A0C2L1514	HEX SCREW M12*80	24	32
16	B5C0R2124	BED-PLATE M12	48	64
17	A0C0S4524	HEX SCREW M12*25	24	32
18	A0A201014	HEX SCREW M10*60	48	64
19	17162	PLASTIC BEARING	48	64
20	AGA113014	HEX NUT M10 IL	48	64
	17538	CUTTER COULTER ASSEMBLED. PARTS 1-12	24	32
	17573	COULTER FASTENER ASSEMBLED. PARTS 13-20	24	32

HYDRAULICS HOSES AND CYLINDER



Part	Code	Label	Maestro 3000 PCS	Maestro 4000 PCS
1	18060	CYLINDER	2	2
2	D30000211	GASKET 3/8"	4	4
3	D12376	DOUBLE NIPPLE 3/8"	4	4
4	17497	CYLINDER ATTACHMENT SCREW	2	2
5	B5G102524	BED-PLATE M16	4	4
6	17753	BUSHING	4	4
7	AGG113014	HEX NUT M16	4	4
9	17655	CYLINDER PIN	2	2
10	Be8600002	RING COTTER	2	2
11	D14441	HYDRAULIC HOSE	4	4
12	D30000379	T JUNCTION 1/2"	2	2
13	D14440	HYDRAULIC HOSE	2	2
14	D30000212	US IT 1/2"	4	4
15		REDUCTION NIPPLE 202-04-08	2	2
16	C23072-08	QUICK COUPLING MALE	2	2



PART CODE	LABEL	MAESTRO 3000 PCS	MAESTRO 4000 PCS
1	17494	1	
	BODY FOR TILLERS		
	18248		1
	BODY FOR TILLERS		
2	A0C151514	2	
	HEX NUT M12X35 8.8 DIN933 ZN		
3	17640	8	
	LOCKING PLATE		8
4	B5C0R2024	2	
	BED-PLATE M12 DIN125A ZN		2
5	17284	2	
	BEAM TO BODY		
	18073		2
	BEAM TO BODY		
6	17457	8	
	LEVER ARM		8
7	17461	4	
	CONNECTING BAR		4
8	17404	48	
	ATTACHMENT BRACKET		66
9	17499	23	
	INTERMEDIATE PIPE		31
10	17497	2	
	PIN TO LEVER ARMS		2
11	17751	1	
	BUSHING SHORT TO PLATES		1
12	17752	1	
	BUSHING LARGE		1
13	17792	24	
	TIGHTENING SCREW FOR SPRING		32
15	E34816	24	
	DRAW-SPRING TS-150		32
16	18104	1	
	SCALE ASSEMBLED		1
17	17657	1	
	BUSHING		1
18	D60605	4	
	INNER PLUG 60*60*5		4
20	18109	1	
	METER HAND FOR TILLERS		1
21	A0G3A1512	23	
	HEX SCREW M16X100 8.8 DIN931 ZN		31
22	AGG113014	29	
	HEX NUT IL M16 DIN985-8 ZN		31
23	B5G102524	4	
	BED-PLATE M16 DIN125A ZN		4
24	A0G401524	1	
	HEX SCREW M16X120 8.8 DIN933 ZN		1
25	A0L6L1514	1	
	HEX SCREW M20X200 8.8 DIN931 ZN		1
26	AGL113014	5	
	HEX NUT IL M20 DIN985-8 ZN		5
27	A13650	4	
	HEX SCREW M20X50 8.8 DIN933 ZN		4
28	B5L173024	8	
	BED-PLATE M20 DIN125A ZN		8
29	AGC113014	1	
	HEX NUT IL M12 DIN985-8 ZN		1
30	17794	8	
	BUSHING FOR TILLER		8
31	A0C3A1014	8	
	HEX SCREW M12X100 8.8 DIN931 ZN		8
32	AGC113014	8	
	HEX NUT 1L M12 DIN985-8 ZN		8