



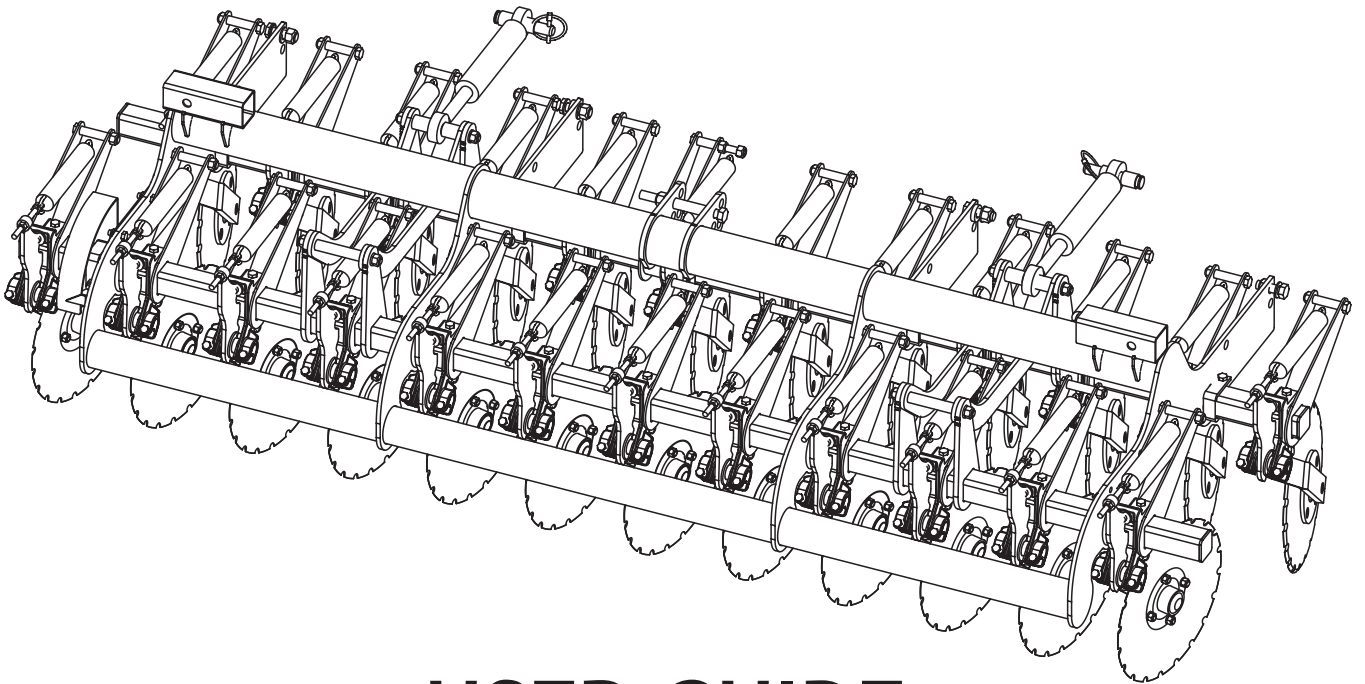
Junkkari

◆ ◆ ◆
MAESTRO

3000
MAESTRO

4000
MAESTRO

PRE-TILLER WITH PLOUGHING DISKS



USER GUIDE SPARE PARTS CATALOGUE

EAU08_EN

Junkkari Oy
62375 YLIHÄRMÄ FINLAND
TEL. +358-(0)6-4835111
FAX +358-(0)6-4835295
e-mail: junkkari@msk.fi
Internet: www.junkkari.fi

ENGLISH 

CONTENTS

DEAR CUSTOMER.....	2
TECHNICAL SPECIFICATIONS.....	2
PURPOSE OF USE.....	3
OPERATING PRINCIPLE.....	3
DELIVERY PACKAGE.....	3
INSTALLATION.....	4
USE.....	5
SPARE PARTS.....	V1

DEAR CUSTOMER

We thank you for your trust and wish you the best success in your work. We ask you to familiarize yourself with this user guide, because complete understanding of the accessory, correct adjustments and careful maintenance guarantee user safety and continued operation of the device on busy work days.

It is important to understand every section in this guide and to follow the instructions. In unclear cases you should contact the seller of the machine.

We hope that after you have read the user guide you will return the signed warranty card to the factory within 14 days of the day of delivery.



WARNING!

This user guide is meant as an appendix to the Junkkari Maestro user guide. Sections:

- 4 SAFETY INSTRUCTIONS
- 6.3 LIMITATIONS OF USE AND FORBIDDEN USES
- 8 TRANSPORTAT, HANDLING AND STORAGE OF THE MACHINE
- 9.1 PUTTING THE MACHINE IN WORKING ORDER
- 9.5 DISPOSING OF PACKAGES
- 16 TROUBLESHOOTING
- 17 WITHDRAWAL FROM ACTIVE USE
- 18 TERMS OF GUARANTEE
- 19 SCOPE OF LIABILITY

As such pertain also to a separate pre-tiller. Before installation and use familiarize yourself with the corresponding instructions of the seed and fertilizer drill.

TECHNICAL SPECIFICATIONS

	MAESTRO 3000	MAESTRO 4000
Working width, cm	300	400
Ploughing disks, assembly	24	32
Row spacing, cm	12.5	12.5
Weight, kg	660	880



WARNING SIGN

The user guide uses this sign always when there is a danger to the user or to other people.
In addition, the sign is used when there is a danger to the environment or property

PURPOSE OF USE

The tiller equipped with ploughing disks is meant to be used when you want to mould the stubble, ploughed area or some other pre-tilled field surface in connection with sowing.

If the pre-tiller is installed later, you must ensure that you are using safe lifting devices and accessories.

The pre-tiller is not recommended to be used with a packer, because then the tractor weight cannot be moved to weigh on the tiller. Therefore use a normal tow bar and connect it to the tractor towing hook. Other constraint for using a packer exists except lower weighting compared to the tow bar.

The tiller has been equipped with hydraulic cylinders which help to raise or lower the tiller's curved disks. The actual weighting takes place with an adjustable spring which by default has been adjusted to a position suitable for most machines. When necessary, the adjustment can be changed.

The machine is suitable only for Junkkari Maestro sowing fertilizers.

With other applications ask a specialist for advice.

OPERATING PRINCIPLE

The purpose of the tiller disks is to mould the seedbed before the sowing coulters and to reduce the amount of drive times needed.

The tiller disks are curved, which adds to their stiffness and tilling efficiency.

DELIVERY PACKAGE

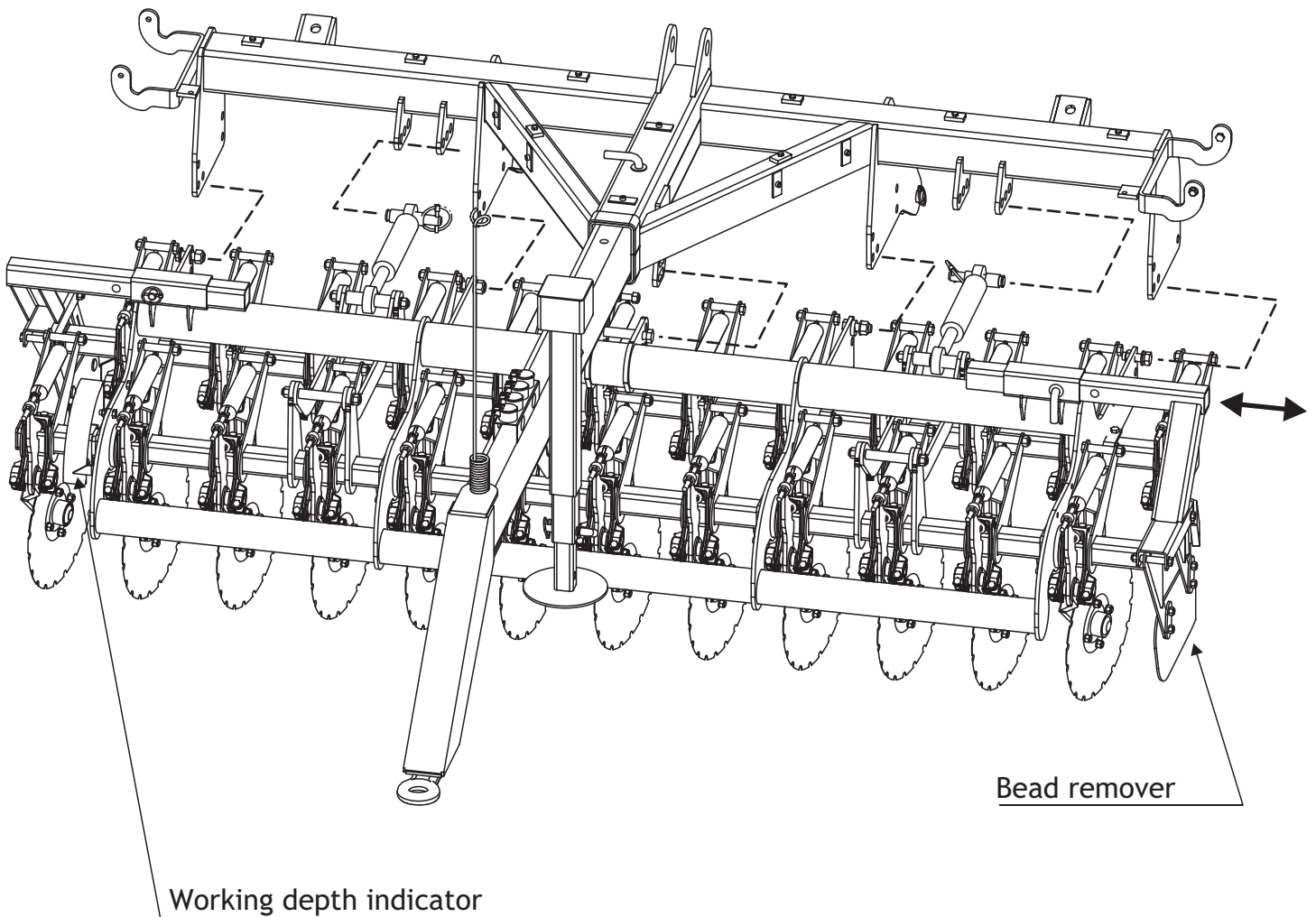
	Maestro 3000	Maestro 4000
-Tiller disk set	1 pcs	1 pcs
-Hydraulic cylinders	2 pcs	2 pcs
-Hydraulic hoses	4 pcs	4 pcs
-Scale assembled	1 pcs	1 pcs
-Meter hand	1 pcs	1 pcs
-Bead removers	1+1 pcs	1+1 pcs
-User guide	1 pcs	1 pcs

INSTALLATION

If the tiller is installed later, it requires a minimum of two people and also a suitable and safe lifting device.

The tiller is installed in the brackets in the pulling device according to the pictures below, and attached in place with the M20*50 screws and M20 nuts. There are 4 pcs of these screws and nuts. In addition, the tiller is attached from the middle with an M20*200 screw and a nut. Two cylinders are attached with mounting pins.

For the bead removers, there are attachment bushings on top of the tiller body. For transport and transfer drive the bead removers can be inserted in such a way that they do not exceed the normal transport width of the machine.

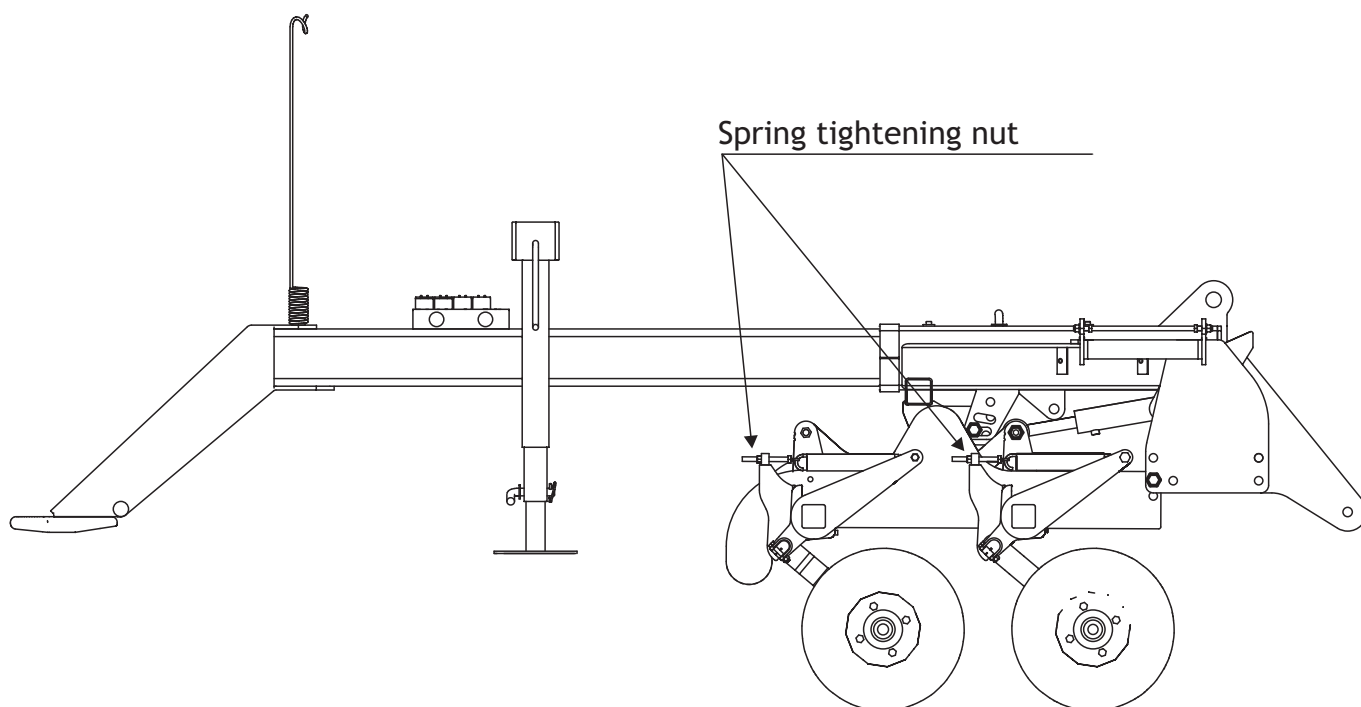


USE

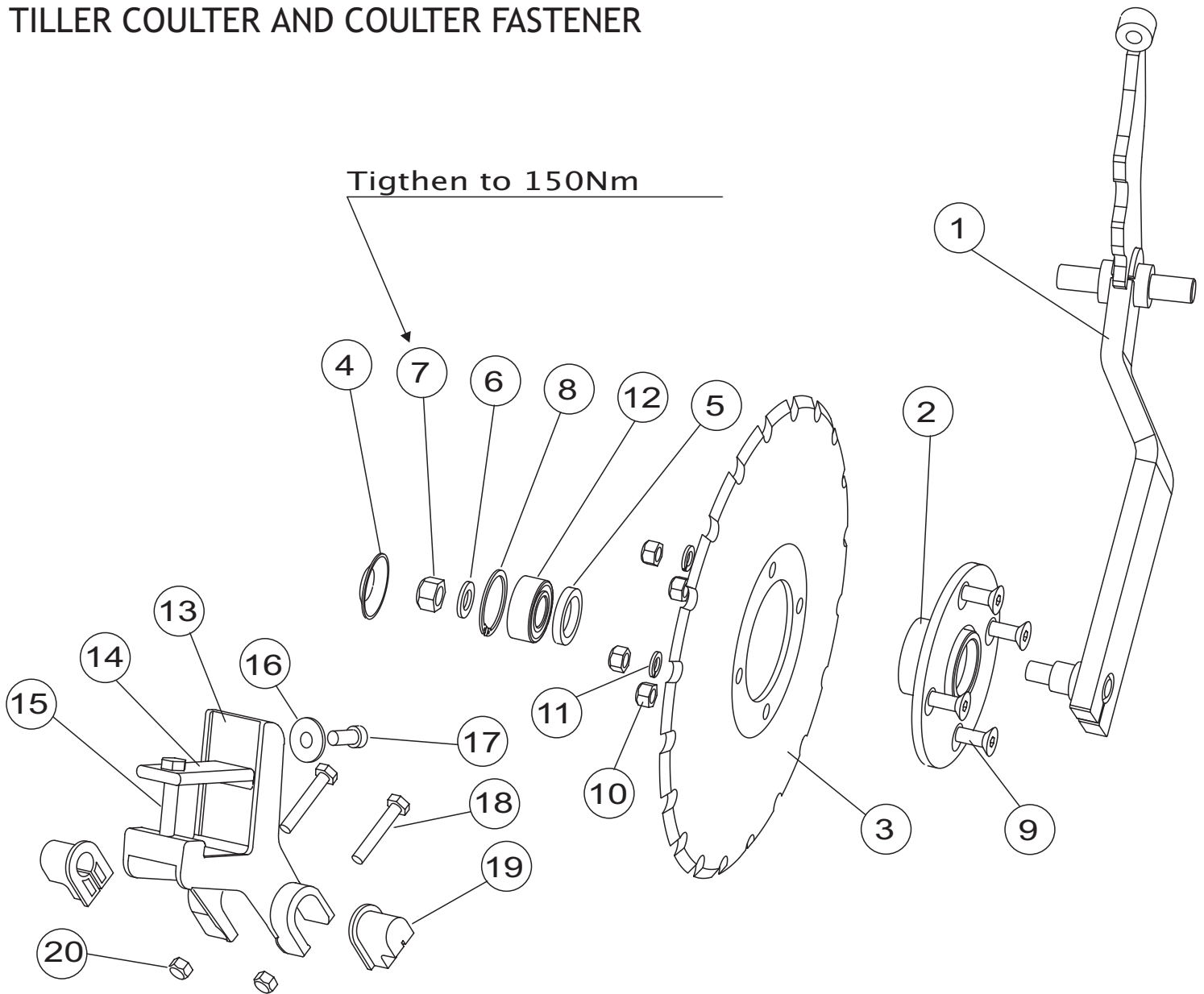
You should adjust the working depth to be at a maximum the working depth of the sowing coulters. The adjustment and weighing of the working depth takes place with the help of the hydraulics cylinders.

The weighting of tilling disks takes place in two ways: with hydraulic cylinders and spring leverage. If you cannot reach a sufficient work depth by weighting with the hydraulic cylinders, you have to tighten the springs.

In tight turns on very hard soil it is good to lessen the load on the tilling disk set. It is easy to return to the normal working depth with the help of the indicator in the device.

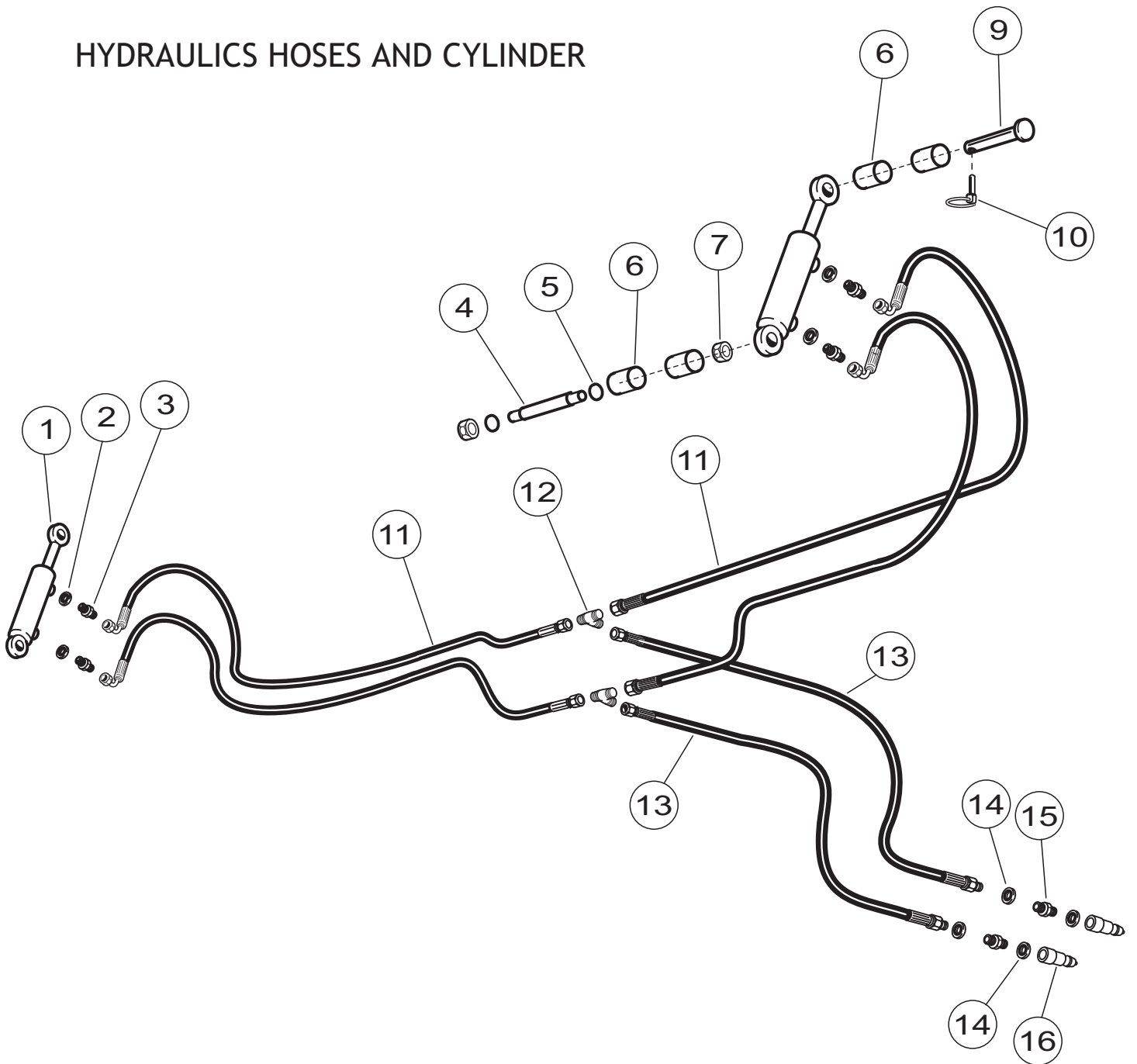


TILLER COULTER AND COULTER FASTENER



Part	Code	Label	Maestro 3000 pcs	Maestro 4000 pcs
1	17763	FRONT SHAFT. WELDED	12	16
	17764	BACK SHAFT. WELDED.	12	16
2	17256	TERMINAL WELDED AND MACHINED.	24	32
3	D17250	TOOTHED COULTER DISK CONVEX	24	32
4	17385	PROTECTIVE SOCKET	24	32
5	D49001	STEFA 30*47*7 RST	24	32
6	B5G102524	BEDPLATE M16 DIN125AZN	24	32
7	AGG113014	HEX NUT IL M16 DIN985-8 ZN	24	32
8	BH1N20021	SEGER RING PERF 52X2 DIN472	24	32
9	A0C0T4524	DIN_EN_ISO_10642-M12x30	96	128
10	AGC113014	HEX NUT IL M12 DIN985-8 ZN	96	128
11	B5C0M2514	SPRING BEDPLATE M12 DIN127B ZN	96	128
12	Ce3205	FACETED BALL BEARING 3205A2 RS	24	32
13	17118	COULTER FASTENER	24	32
14	17576	FASTENER ROD	24	32
15	A0C2L1514	HEX SCREW M12*80	24	32
16	B5C0R2124	BEDPLATE M12	48	64
17	A0C0S4524	HEX SCREW M12*25	24	32
18	A0A201014	HEX SCREW M12*60	48	64
19	17162	PLASTIC BEARING	48	64
20	AGA113014	HEX NUT M10 IL	48	64
	17761	TILLER DISK FRONT ASSEMBLED. PARTS 1-12	24	32
	17762	TILLER DISK BACK ASSEMBLED. PARTS 1-12	24	32
	17573	COULTER FASTENER ASSEMBLED PARTS 13-20	24	32

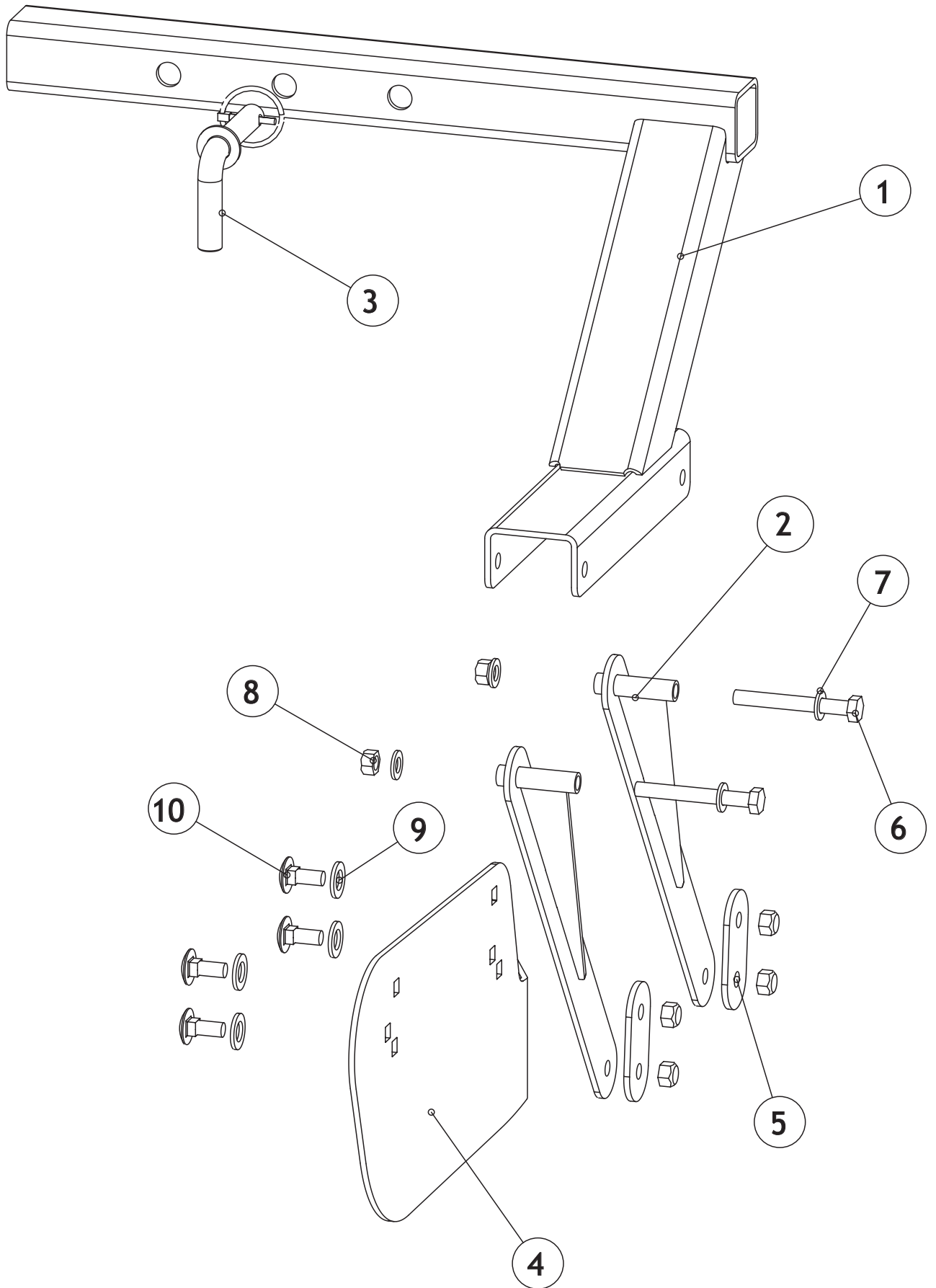
HYDRAULICS HOSES AND CYLINDER



PART CODE	LABEL	MAESTRO 3000 PCS	MAESTRO4000 PCS	
1	18060	CYLINDER	2	2
2	D30000211	GASKET 3/8"	4	4
3	D12376	DOUBLE NIPPLE 3/8"	4	4
4	17497	CYLINDER ATTACHMENT SCREW	2	2
5	B5G102524	BEDPLATE M16	4	4
6	17753	BUSHING	4	4
7	AGG113014	HEX NUT M16	4	4
9	17655	CYLINDER PIN	2	2
10	Be8600002	RING COTTER	2	2
11	D14441	HYDRAULIC HOSE	4	4
12	D30000379	T JUNCTION 1/2"	2	2
13	D14440	HYDRAULIC HOSE	2	2
14	D30000212	US IT 1/2"	4	4
15		REDUCTION NIPPLE 202-04-08	2	2
16	C23072-08	QUICK COUPLING MALE	2	2

PART CODE	LABEL	MAESTRO 3000 PCS	MAESTRO 4000 PCS
1	17494		
	BODY FOR TILLERS	1	
	BODY FOR TILLER		1
2	18248	2	2
	HEX SCREW M12X35 8.8 DIN933 ZN	8	8
3	A0C151514	2	2
	LOCKING PLATE	2	2
4	17640	2	2
	BED-PLATE M12 DIN125A ZN	2	2
5	B5C0R2024	8	8
	BEAM TO BODY	4	4
	BEAM TO BODY	48	66
6	17284	23	31
	LEVER ARM	2	2
7	18073	1	1
	CONNECTING BAR	1	1
8	17457	24	32
	ATTACHMENT BRACKET	24	32
9	17461	1	1
	INTERMEDIATE PIPE	1	1
10	17404	2	2
	PIN TO LEVER ARMS	1	1
11	17499	1	1
	BUSHING SHORT TO PLATES	1	1
12	17497	1	1
	BUSHING LARGE	1	1
13	17751	1	1
	TIGHTENING SCREW FOR SPRING	1	1
14	17752	1	1
	DRAW-SPRING TS-150	1	1
15	17792	1	1
	SCALE ASSEMBLED	1	1
16	E34816	1	1
	BUSHING	1	1
17	18104	4	4
	INNER PLUG 60*60*5	4	4
18	17657	1	1
	METER HAND FOR TILLERS	1	1
19	D60605	23	31
	HEX SCREW M16X100 8.8 DIN931 ZN	29	31
20	18109	4	4
	HEX NUT IL M16 DIN985-8 ZN	4	4
21	A0G3A1512	1	1
	BED-PLATE M16 DIN125A ZN	1	1
22	AGG113014	1	1
	HEX SCREW M16X120 8.8 DIN933 ZN	5	5
23	B5G102524	4	4
	HEX SCREW M20X200 8.8 DIN931 ZN	4	4
24	A0G401524	8	8
	HEX NUT IL M20 DIN985-8 ZN	1	1
25	A0L6L1514	8	8
	HEX SCREW M20X50 8.8 DIN933 ZN	1	1
26	AGL113014	1	1
	BED-PLATE M20 DIN125A ZN	1	1
27	A13650	1	1
	HEX NUT IL M12 DIN985-8 ZN	8	8
28	B5L173024	8	8
	HEX SCREW M12X100 8.8 DIN931ZN	8	8
29	AGC113014	8	8
	BUSHING TO TILLER	8	8
30	17794	8	8
	HEX NUT IL M12 DIN985-8 ZN	8	8
31	A0C3A1014	8	8
	HEX SCREW M12X100 8.8 DIN931ZN	8	8
32	AGC113014	8	8
	HEX NUT IL M12 DIN985-8 ZN	8	8

BEAD REMOVER



PART	CODE	LABEL	PCS
1	18401	FASTENER WELDED	1
2	18395	SHAFT WELDED	2
3	14505	STAND PEG	1
4	18389V	PLATE TO THROWER LEFT	1
4	18389O	PLATE TO THROWER RIGHT	1
5	18403	LOCKING PLATE	2
6	A0C3A1014	HEX SCREW M12X100 8. 8 DIN931 ZN	2
7	B5C0R2024	BED PLATE M 12 DIN125A ZN	4
8	AGC113014	HEX NUT IL M12 DIN985-8 ZN	6
9	B5G102524	BED PLATE M 16 DIN125A ZN	4
10	A0C103014	LOCKING SCREW M12X30 4.6 DIN603 ZN	4